



# HP G72 Keyboard Replacement

Before removing the keyboard, it is required to remove the battery, the hard drive cover, and the wireless/memory module compartment cover. there is a total of five Phillips screws that hold the Keyboard to the computer.

Written By: oldturkey03



## INTRODUCTION

To work on this laptop, or any other device, it is important to shut down the computer. If you are unsure whether the computer is off or in Hibernation, turn on the computer, and then shut it down through the operating system. Disconnect all external devices connected to the computer. Disconnect the power from the computer by first disconnecting the power cord from the AC outlet and then disconnecting the AC adapter from the computer.



### TOOLS:

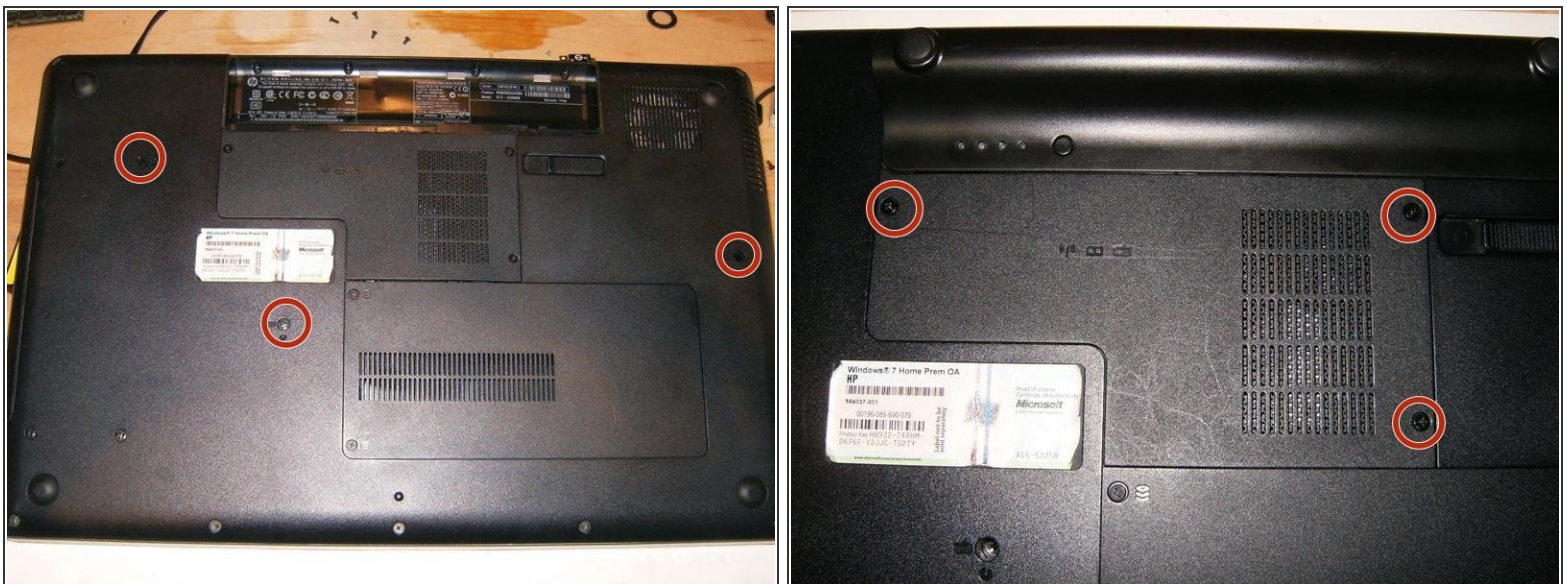
- [Phillips #00 Screwdriver](#) (1)
  - [iFixit Opening Tools](#) (1)
-

## Step 1 — Keyboard



- Shut down the computer. Disconnect all external devices connected to the computer. Disconnect the power from the computer by first disconnecting the power cord from the AC outlet and then disconnecting the AC adapter from the computer.
- Turn the computer so that it faces upside down. Position the computer with the front toward you.
- Slide the battery release latch to release the battery. Pivot the battery to remove it.

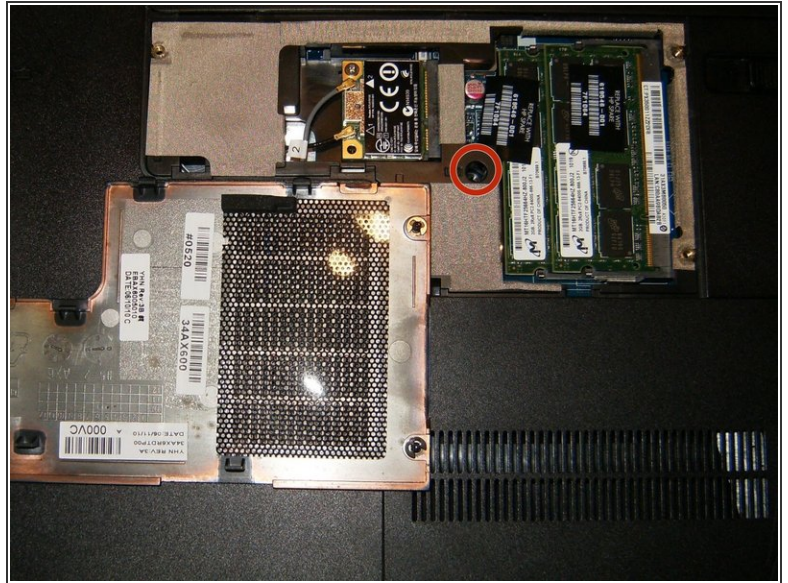
## Step 2



- Remove the three Phillips PM2.5×6.5 screws that secure the keyboard to the computer.
- Loosen the three Phillips M2.5×6.0 captive screws that secure the memory module compartment cover

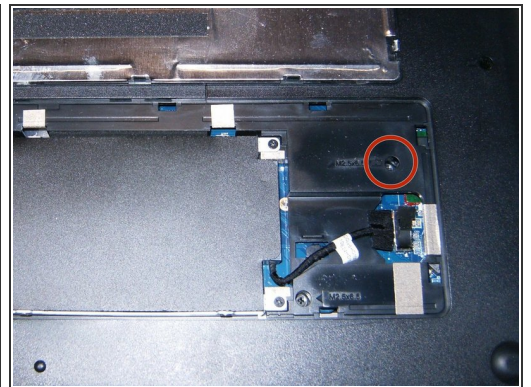
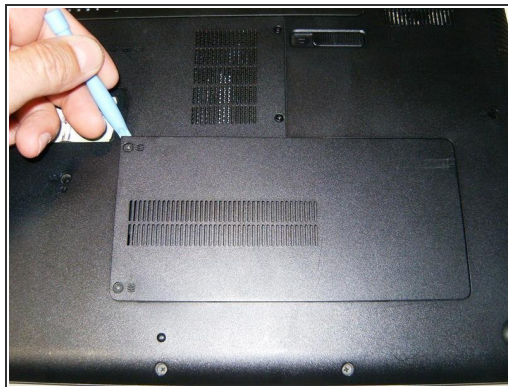


## Step 3



- Use a plastic opening tool (or equivalent) to lift the back side of the cover. Small tabs hold the cover in place. Firmly pull up on the cover to release the tabs.
- Remove the memory module compartment cover, remove the Phillips M2.5X5.0 screw

## Step 4




- Loosen the two Phillips 2.5×6.0 captive screws that secure the hard drive cover to the computer.
- The cover is snapped in by some clips. Use a plastic opening tool on both sides to remove the cover.
- Remove the hard drive cover. Remove one Phillips M2.5X6.5 screw



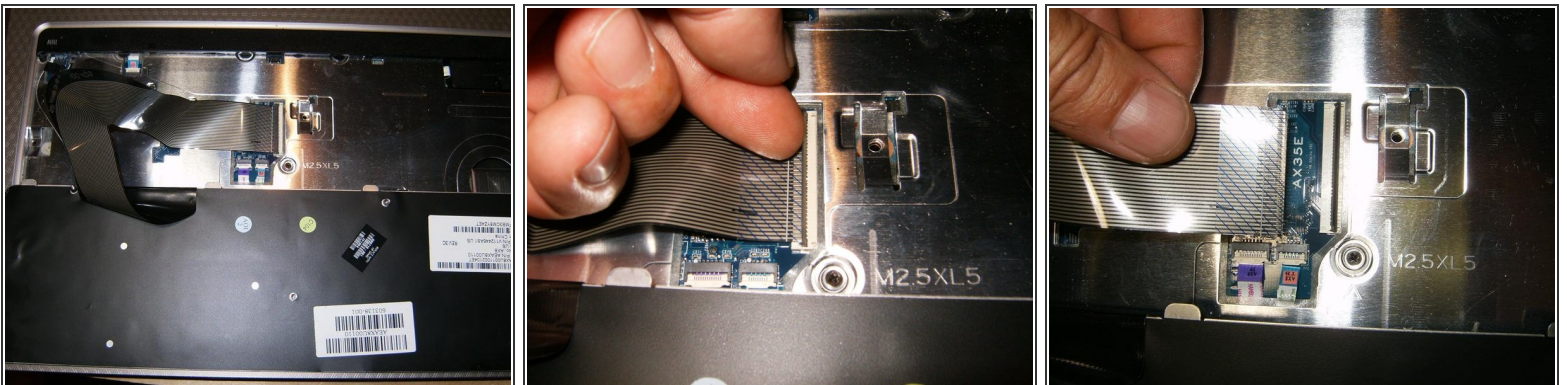
## Step 5



- Turn the computer right side up. Use a plastic opening tool (or similar) and slide it along the top as well as the sides. This will release the plastic tabs that hold the keyboard down.

 Do not use anything to pry on the bottom of the keyboard. This is where solid plastic tabs are located; those may break off. The keyboard needs to be tilted to the bottom to remove it

## Step 6



- With the tabs on top released, flip the keyboard upside down.
- Open the ribbon cable connector by simply flipping the clasp upward.
- Remove the cable

## Step 7



- Finally remove the Keyboard.

To reassemble your device, follow these instructions in reverse order.