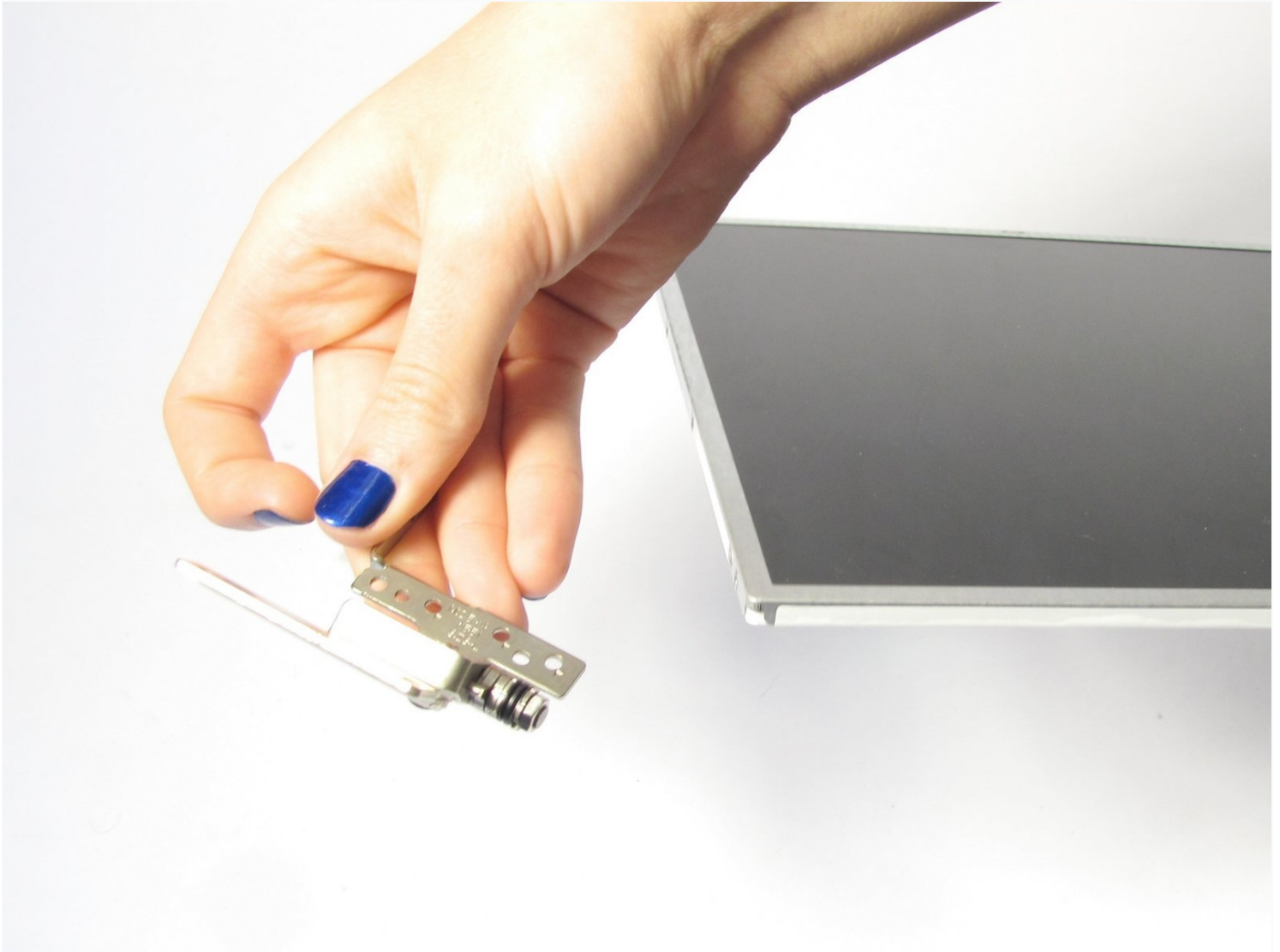




Asus X551CA Display Hinges Replacement

Laptop display hinges connect the front and...

Written By: Josh



INTRODUCTION

Laptop display hinges connect the front and rear display bezels to the base of the laptop, which allows the display to rotate.

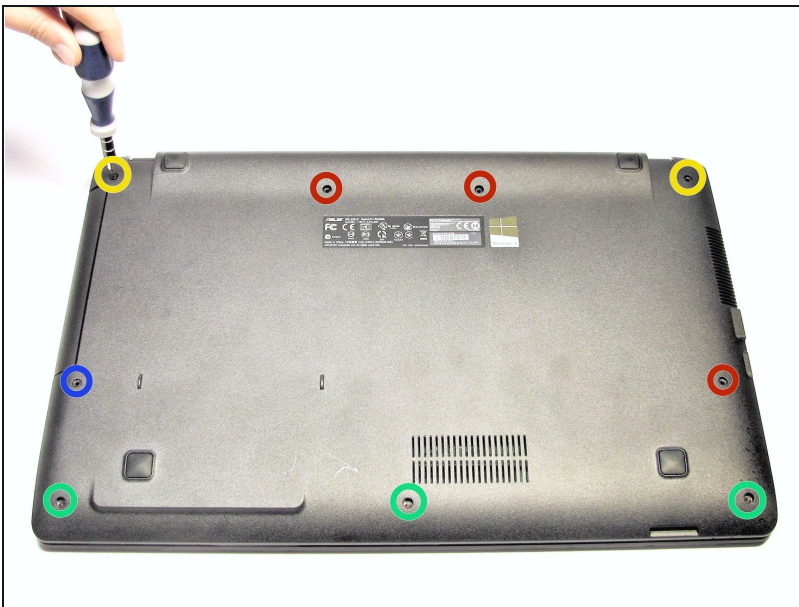
TOOLS:

Phillips #0 Screwdriver (1)

iFixit Opening Tool (1)

Tweezers (1)

Step 1 — Keyboard Plate Cover



 **Power off and unplug your laptop before you begin.**

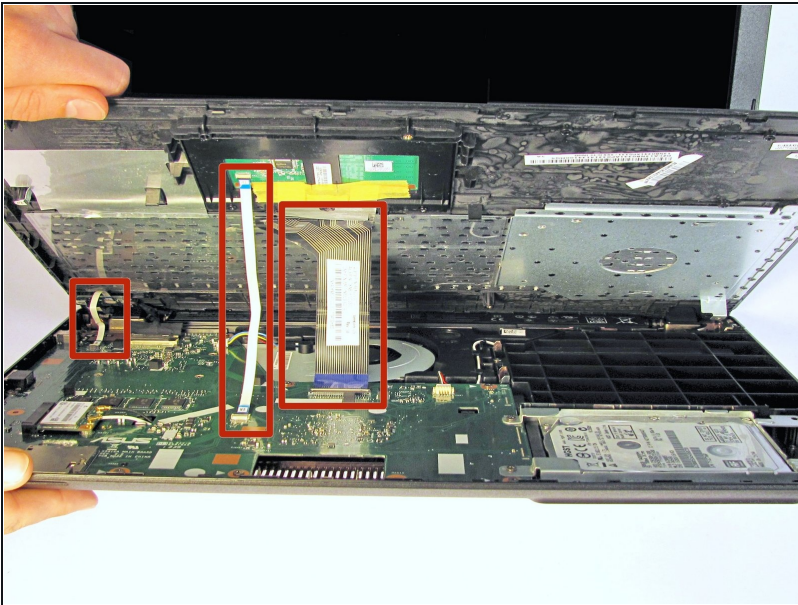
- Turn the laptop upside-down and remove the following screws using a Phillips #0 driver:
 - Two 9.5 mm screws in the middle of the back edge, and one 9.5 mm screw in the right edge
 - Two 4.3 mm screws in the back corners
 - One 17.5 mm screw at the left edge near the optical drive
 - Three 4.3 mm screws in the front edge

Step 2



- Use the plastic opening tool to separate the keyboard plate cover from the bottom cover. In order to do this, insert the plastic opening tool in between the keyboard plate cover and the bottom cover, then slide along edges to pry open.

Step 3



- Locate the three ribbons connecting the keyboard plate cover to the bottom cover.

Step 4



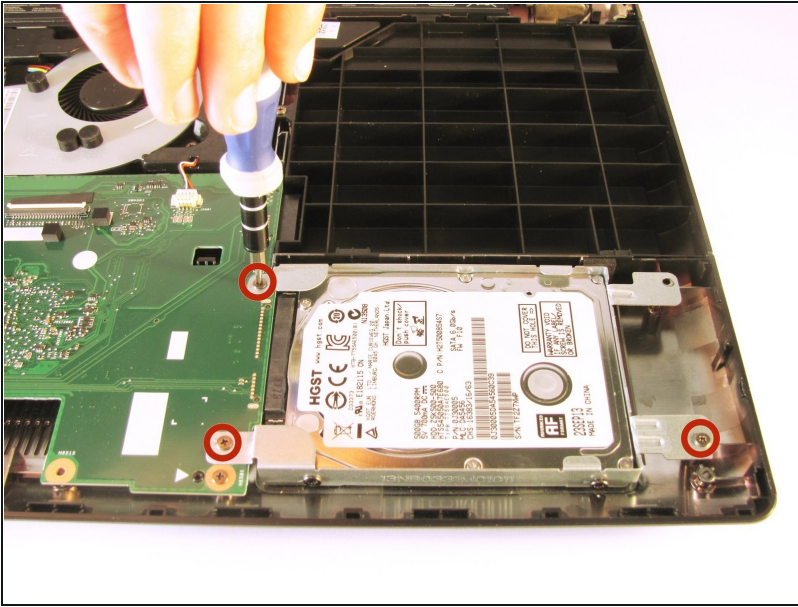
- Invert the laptop in order to gain access to the ribbons.
- Remove each ribbon by flipping the small white plastic flap up and gently pulling on the ribbon.

Step 5



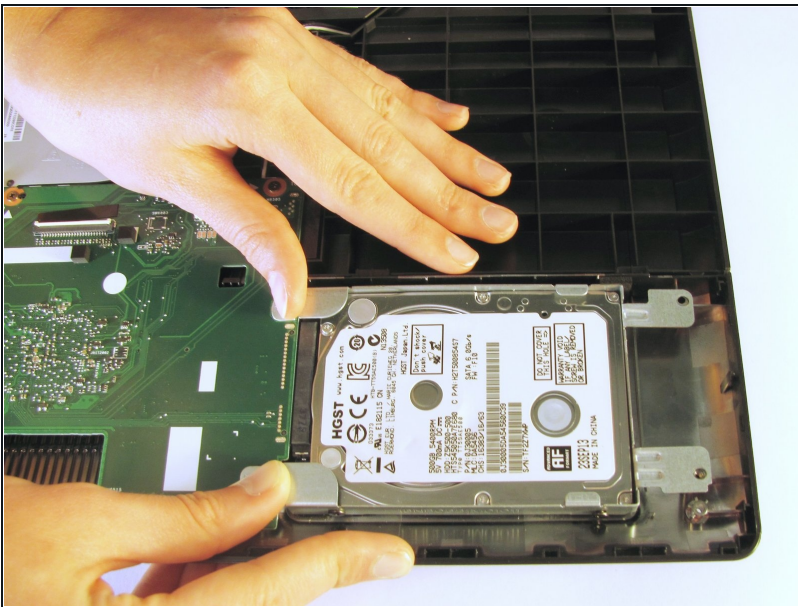
- Now that the ribbons have been detached from the bottom cover, carefully remove the keyboard plate cover. Once it has been removed, place it in a safe and moisture free area so it does not get damaged.

Step 6 — Hard Drive



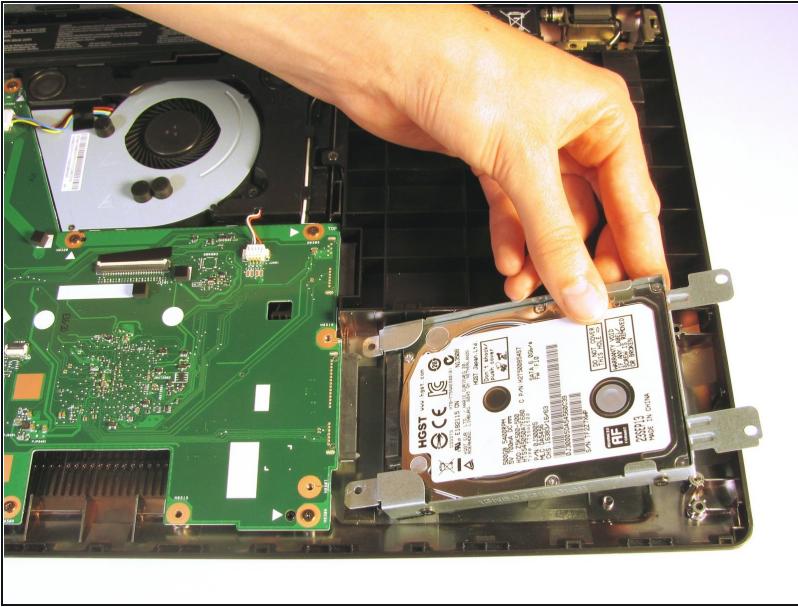
- Unscrew the three 5.5 mm Phillips #0 screws with the Phillips #0 Screwdriver.

Step 7



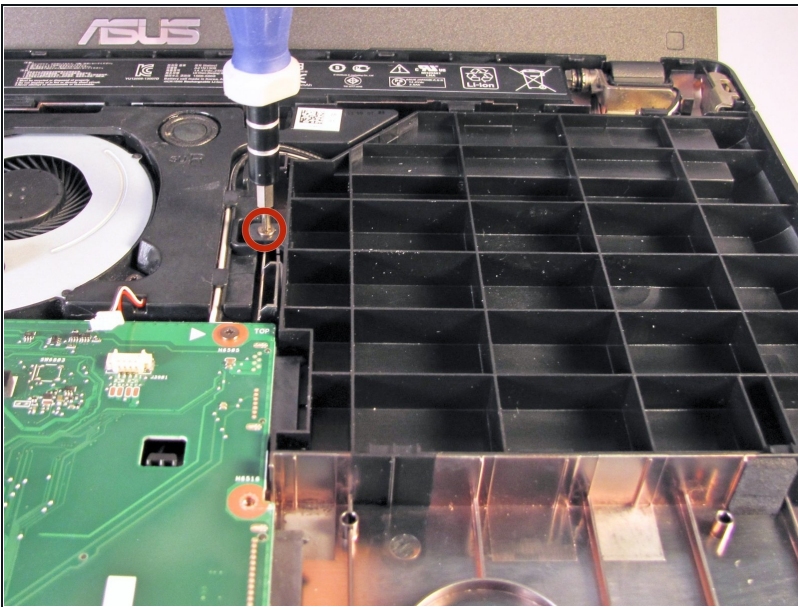
- Once the screws have been removed, place your fingers on the left corners and push the hard drive towards the right edge of the laptop (relative to the picture).

Step 8



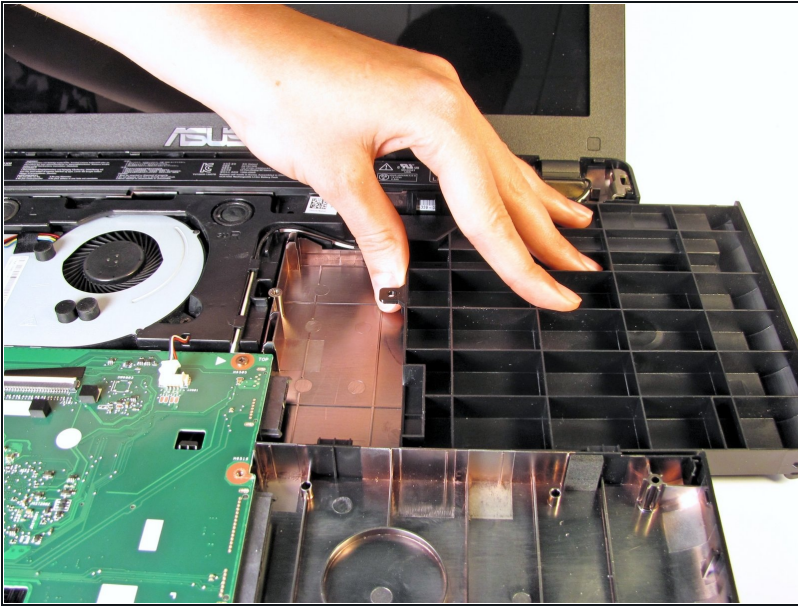
- Once it is free, remove the hard drive from its internal cavity.

Step 9 — Spacer



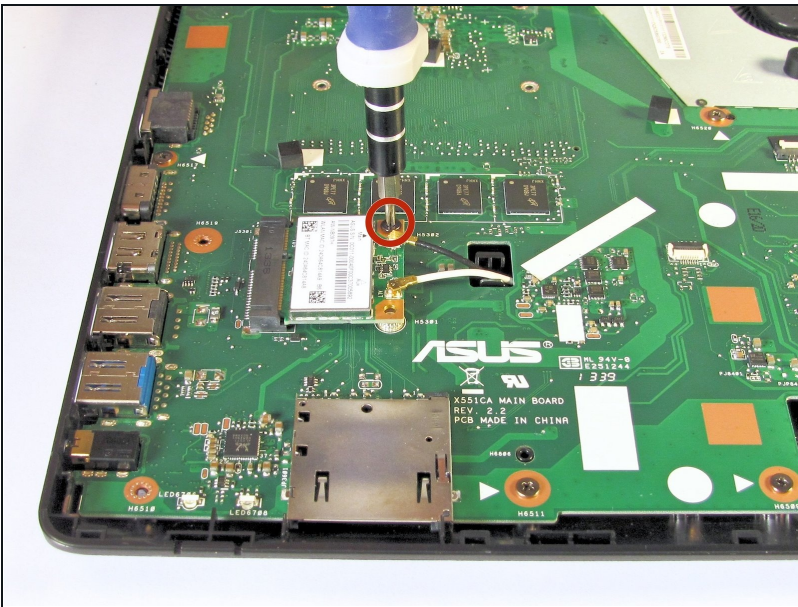
- Using the Phillips #0 Screwdriver, unscrew the 5.5 mm Phillips #0 screw that holds the spacer in place.

Step 10



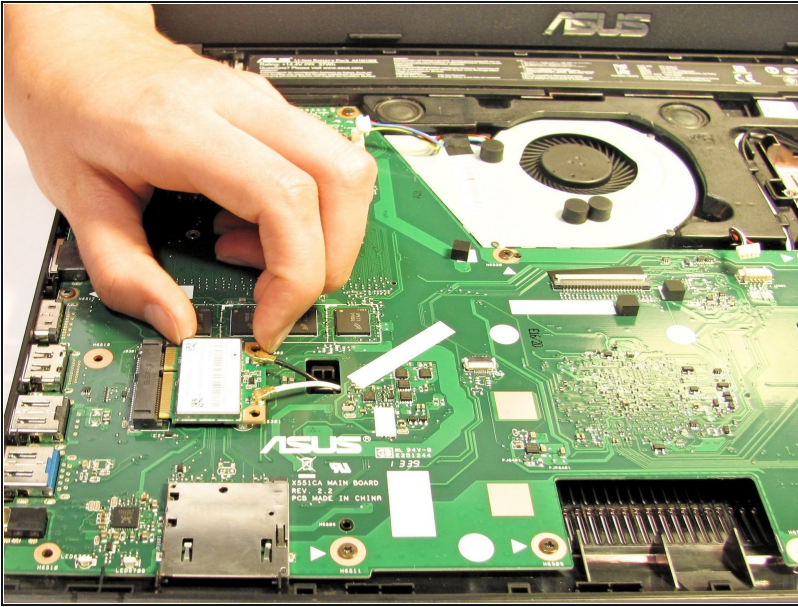
- Remove the spacer from the laptop by gently sliding it towards the right edge of the laptop.

Step 11 — WiFi Card



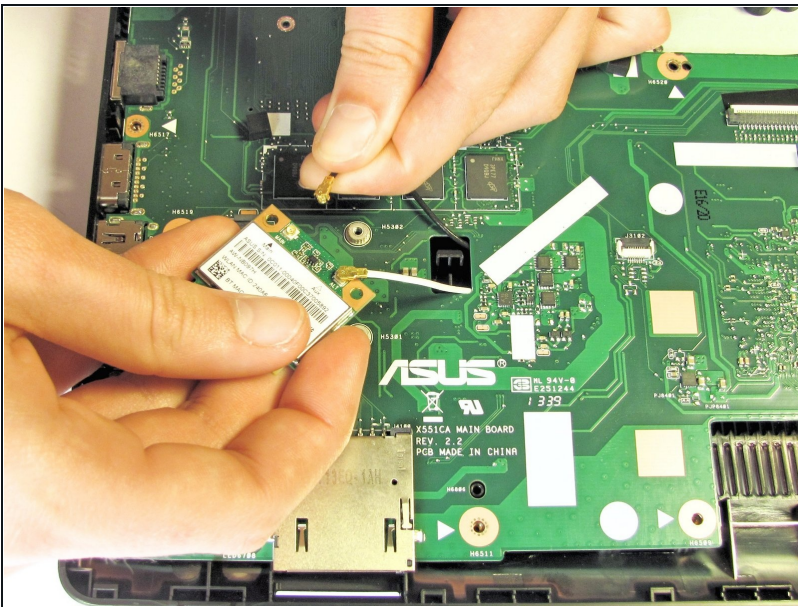
- Use the Phillips #0 Screwdriver to unscrew the 3.2 mm Phillips #0 screw which attaches the WiFi card to the motherboard.

Step 12



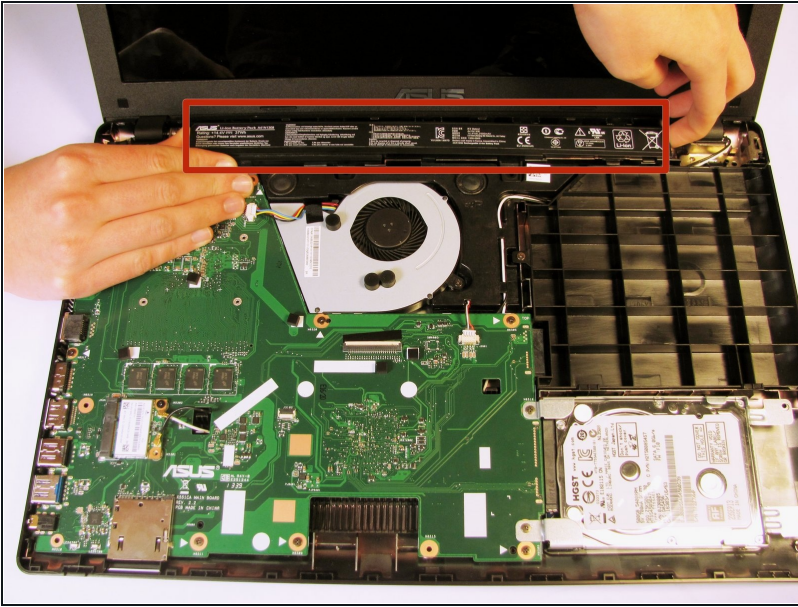
- Disconnect the Wifi card from the motherboard by gently sliding it towards the right edge of the laptop.

Step 13



- Remove each of the two small antenna connections by disconnecting one wire at a time. Each wire should easily unsnap from the Wifi card.

Step 14 — Battery



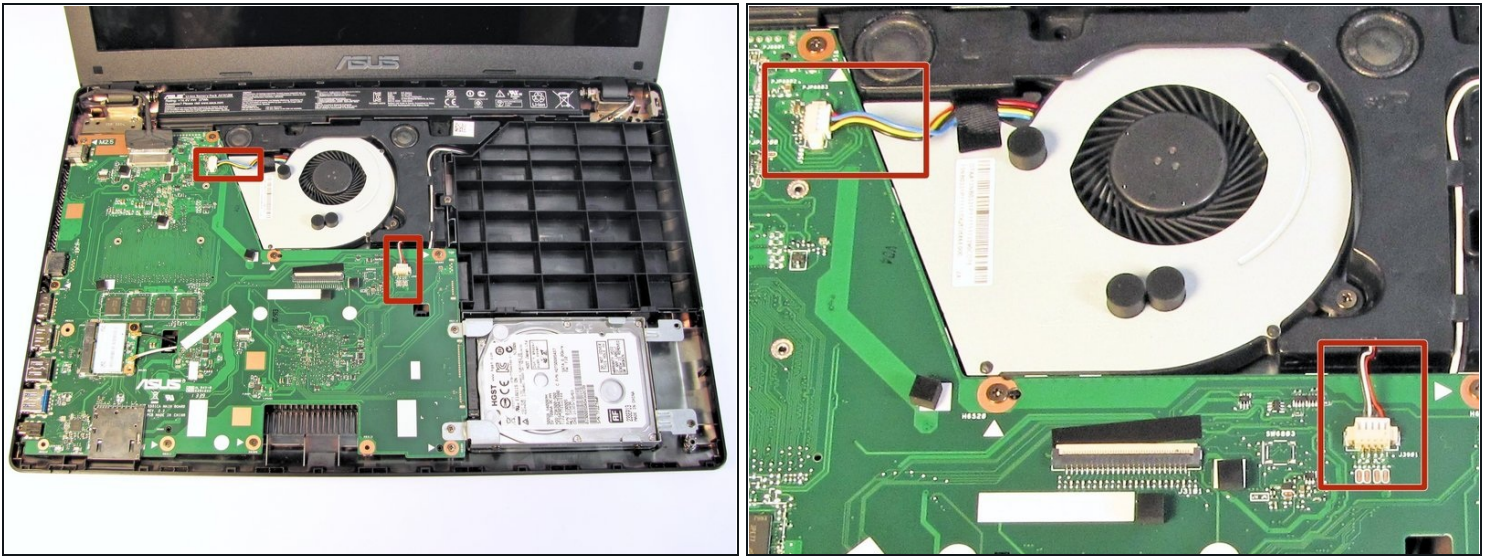
- Remove the battery from the laptop by applying pressure on both ends and lifting it out of the case.

Step 15 — Motherboard



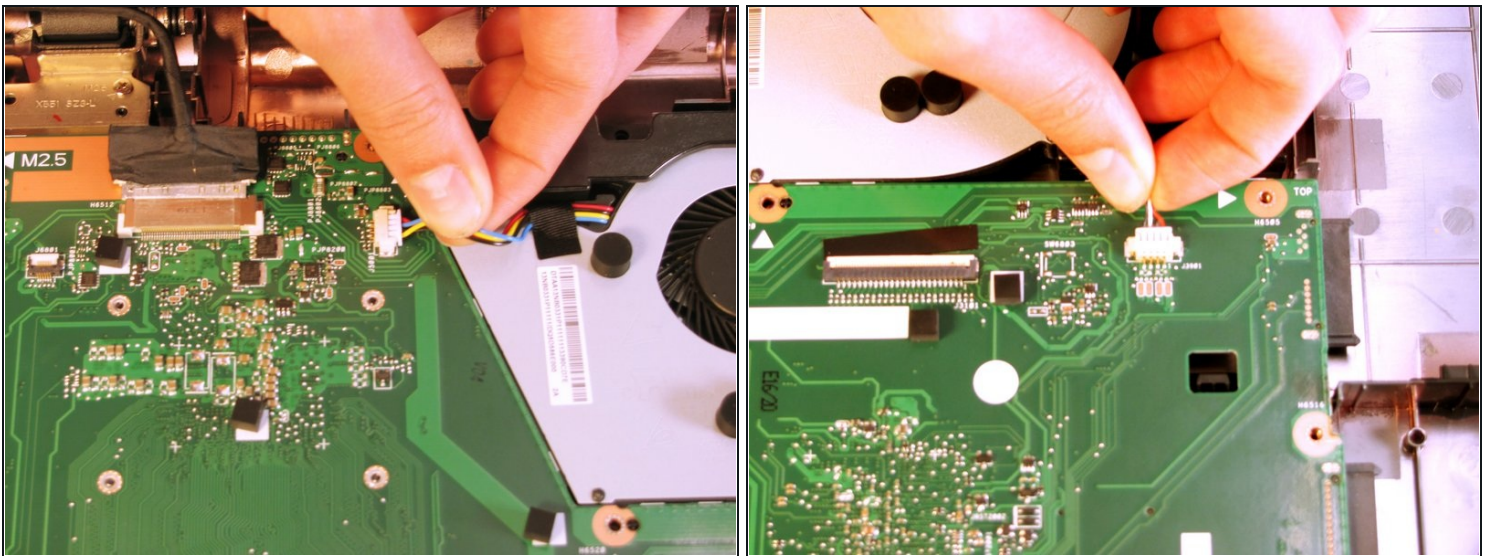
- With the Phillips #0 Screwdriver, remove the nine 5.5 mm Phillips #0 screws which hold the motherboard in place.

Step 16



- Now, locate the two wires connected to the motherboard.

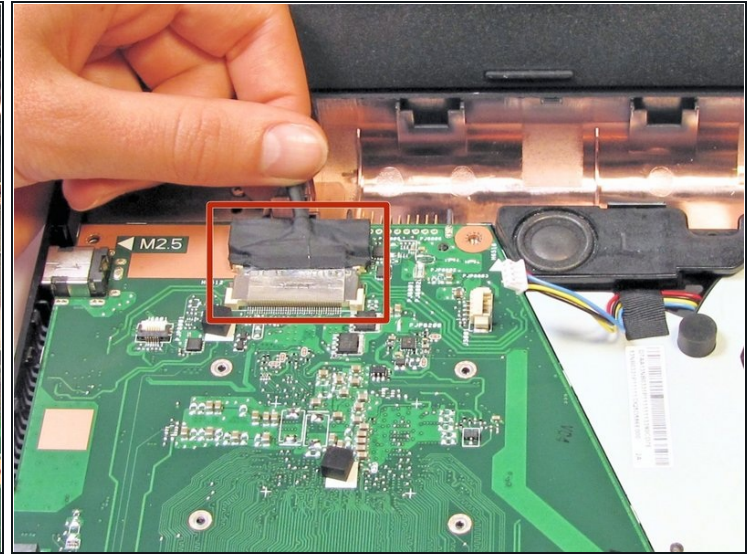
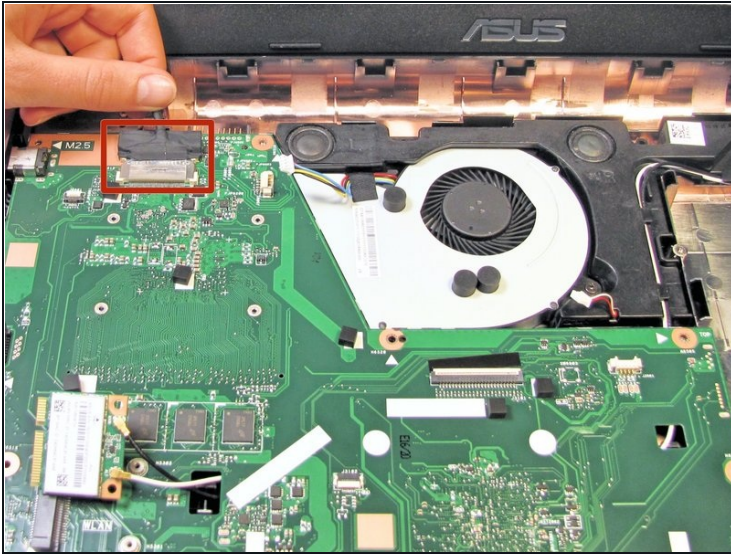
Step 17



- Remove the wires by easily pulling them parallel to the motherboard's surface.

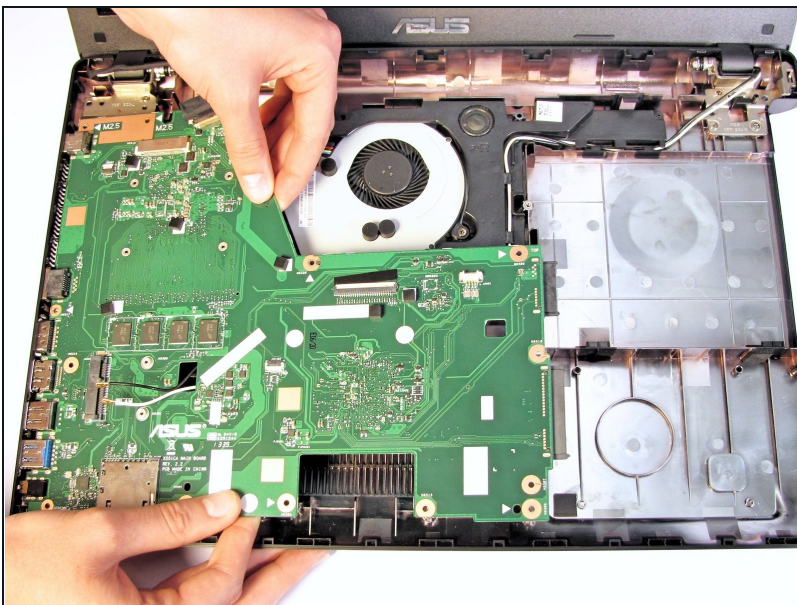
⚠ The wires are very fragile. Be sure to pull carefully so that they do not break!

Step 18



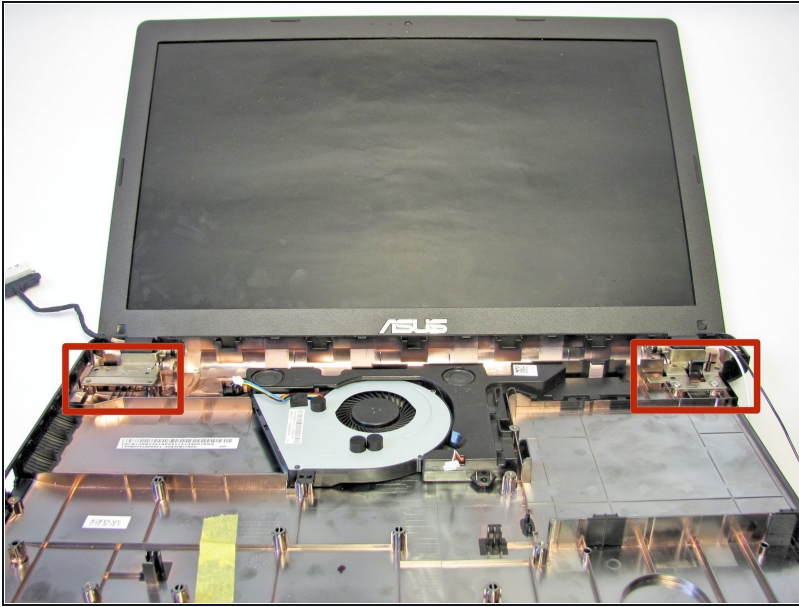
- Remove the LCD display connection by gently pulling on the attached wire.
- Gently lift any tape that may be holding the connection.

Step 19



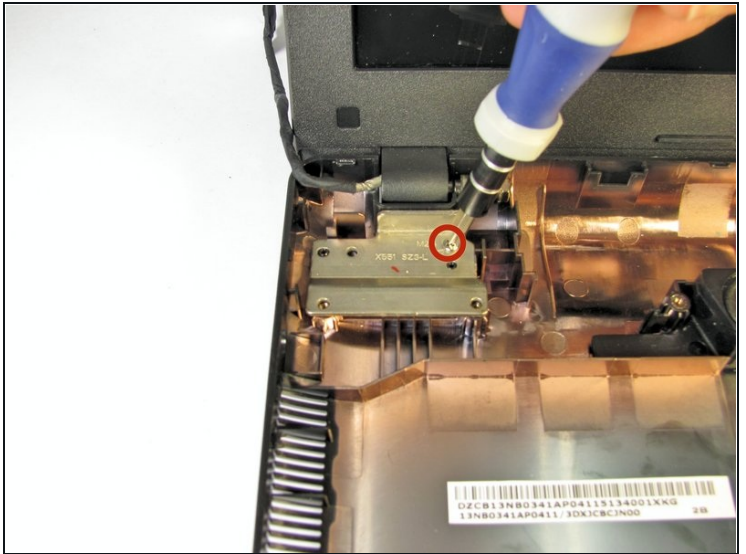
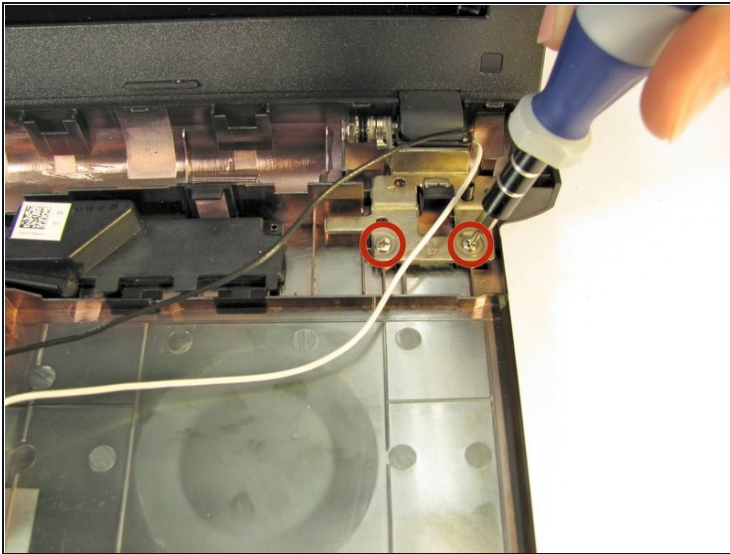
- Remove the motherboard from the case by gently lifting it upward.

Step 20 — Front Display Bezel



- Locate both of the hinges that connect the monitor to the bottom plate cover.

Step 21



- Use the Phillips #0 screwdriver to unscrew the two 4.8 mm Phillips #0 screws on the right hinge, and the one 4.8 mm Phillips #0 screw on the left hinge.

Step 22



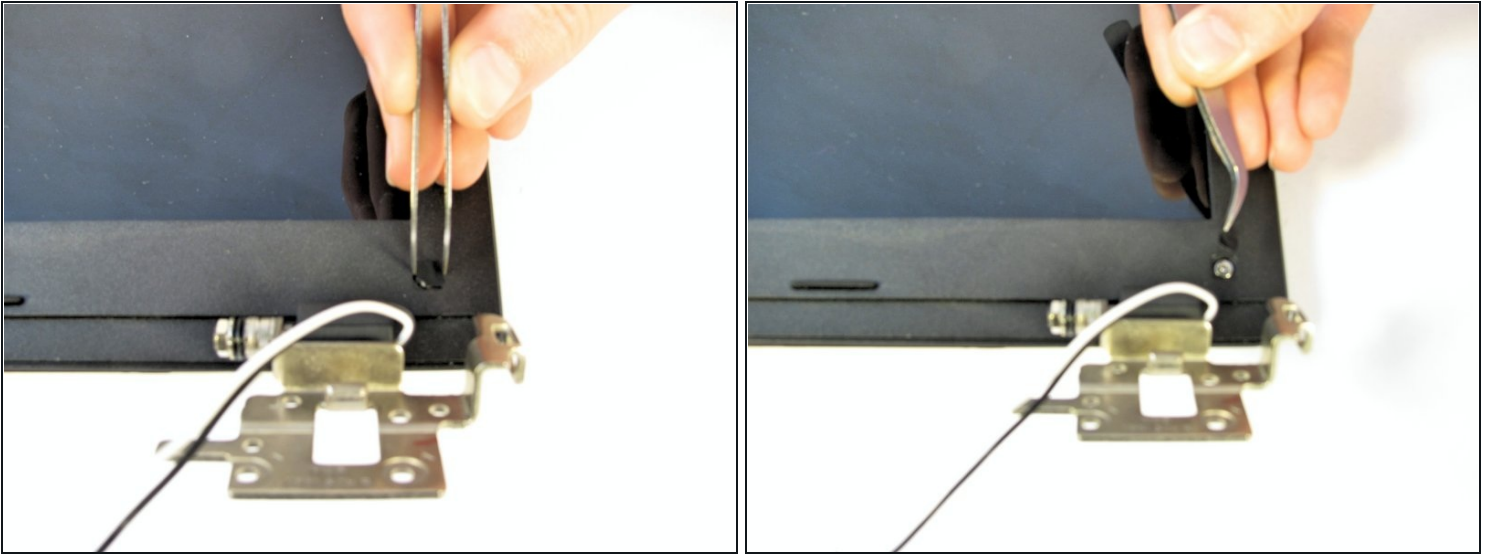
- Once the screws are removed, the monitor should easily lift away from the bottom plate cover

Step 23



- Locate the two stickers that cover up the screws that hold the front bezel in place

Step 24



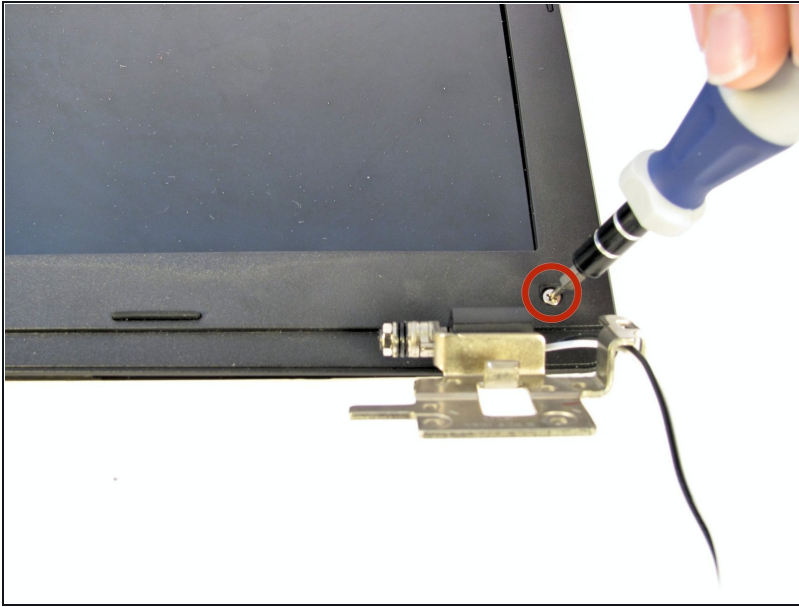
- Use a pair of [tweezers](#) to remove these stickers.
- ① The stickers can be difficult to grasp with the tweezers so do not be discouraged when trying to remove them!

Step 25



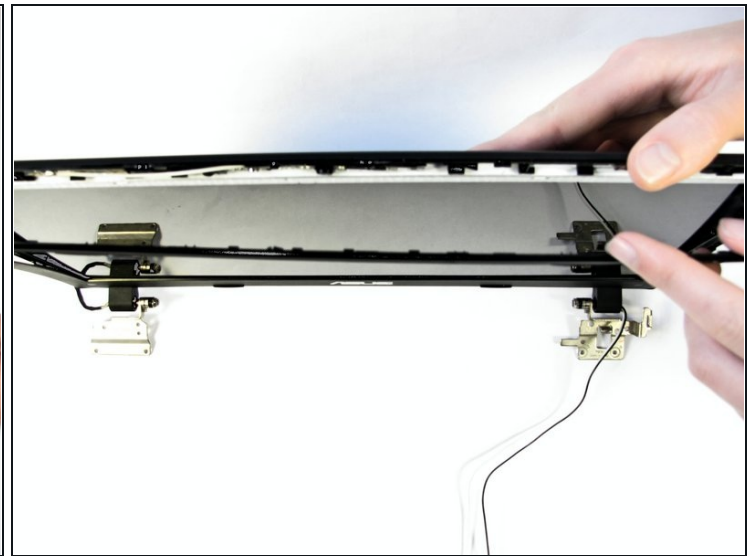
- Once the stickers are removed, the two screws that hold the front bezel in place will be exposed.

Step 26



- Use the Phillips #0 screwdriver to remove the two 4.8 mm Phillips #0 screws.

Step 27



- Once the screws are taken out, the front bezel is ready to be removed.
- Insert the Plastic Opening Tool inbetween the front and back bezels and slide along the edges to pry open.
- ① Gently use hands if necessary to separate the front bezel from the back.

Step 28



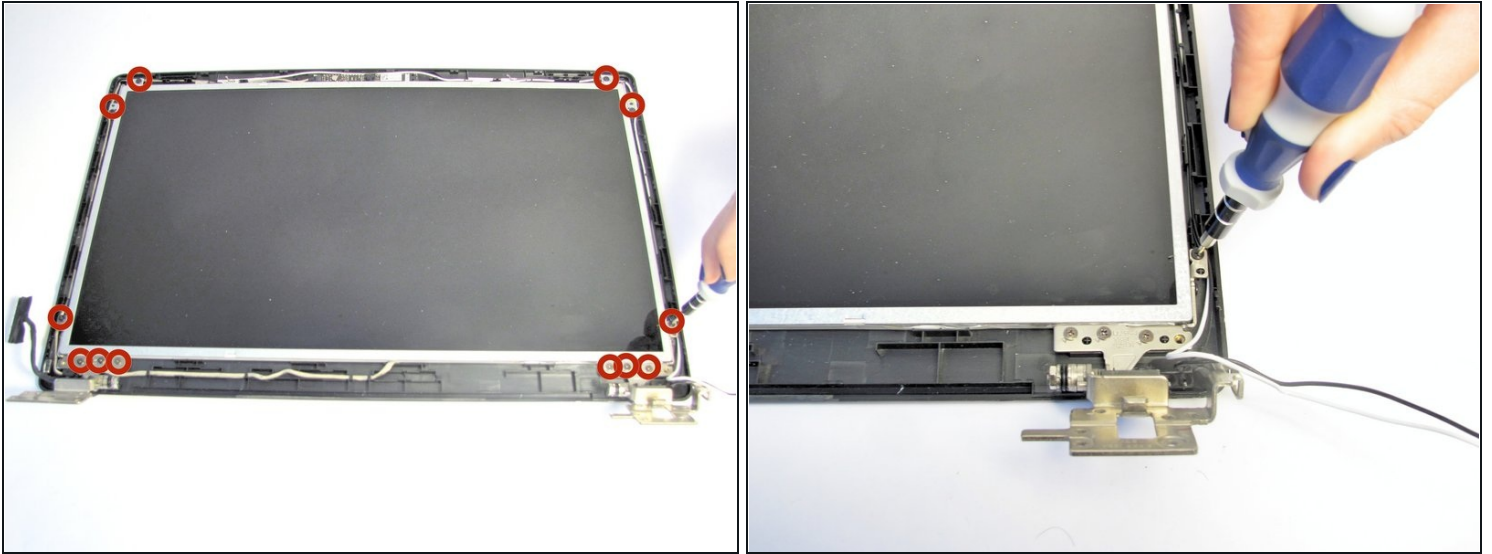
- Once pried away from the back bezel, the front bezel will easily lift away from the LCD.

Step 29 — LCD



- Locate the twelve 3.2 mm Phillips #0 screws that hold the LCD in place.

Step 30



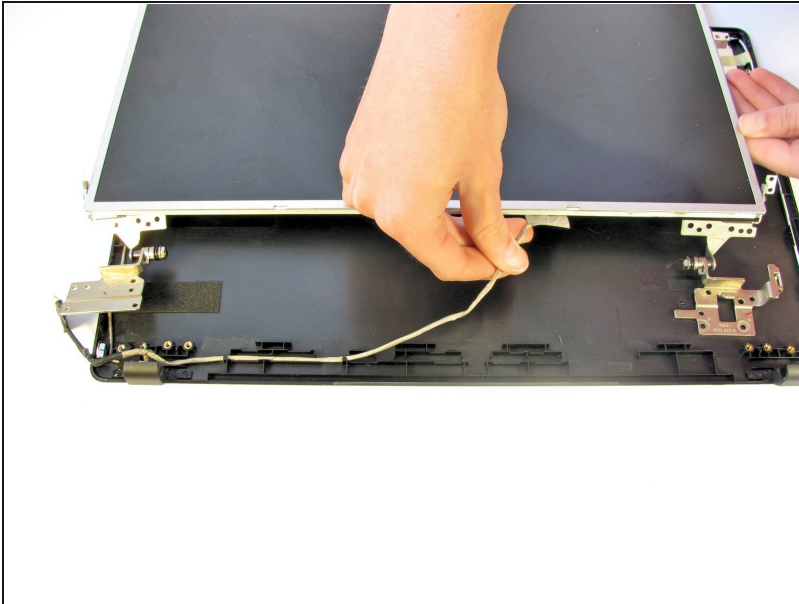
- Use the Philips #0 screwdriver to remove the twelve 3.2 mm Phillips #0 screws that hold the LCD in place.

Step 31



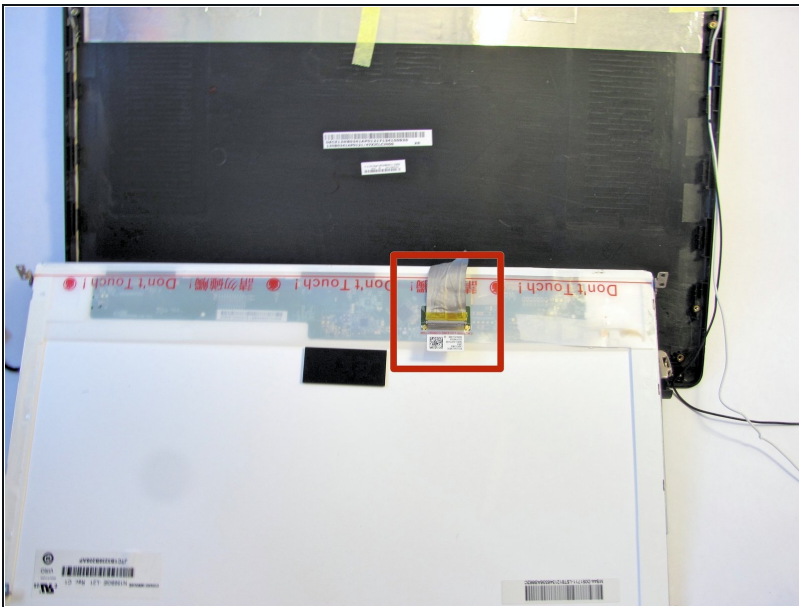
- Once the screws are removed, lift up the LCD to expose the wire connecting the back bezel to the LCD.

Step 32



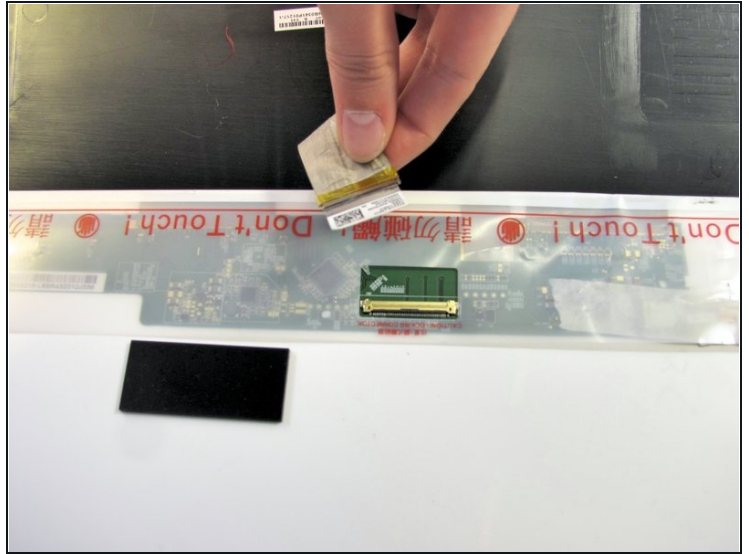
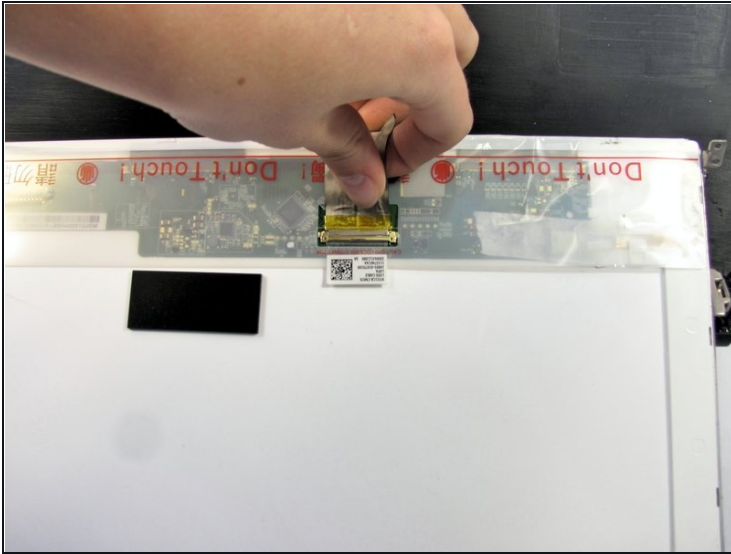
- Gently unhook the wire from the back bezel to allow the LCD to be flipped over.

Step 33



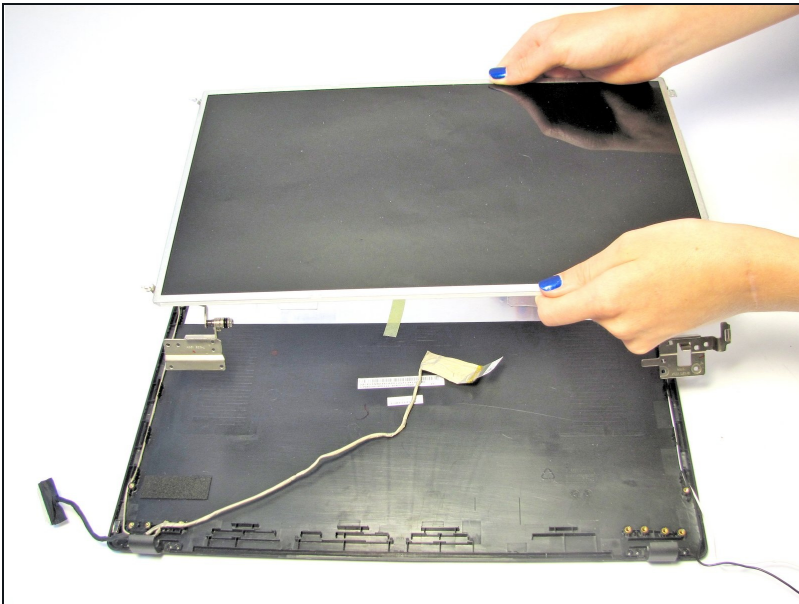
- Once flipped over, locate the ribbon that is connected to the back of the LCD.

Step 34



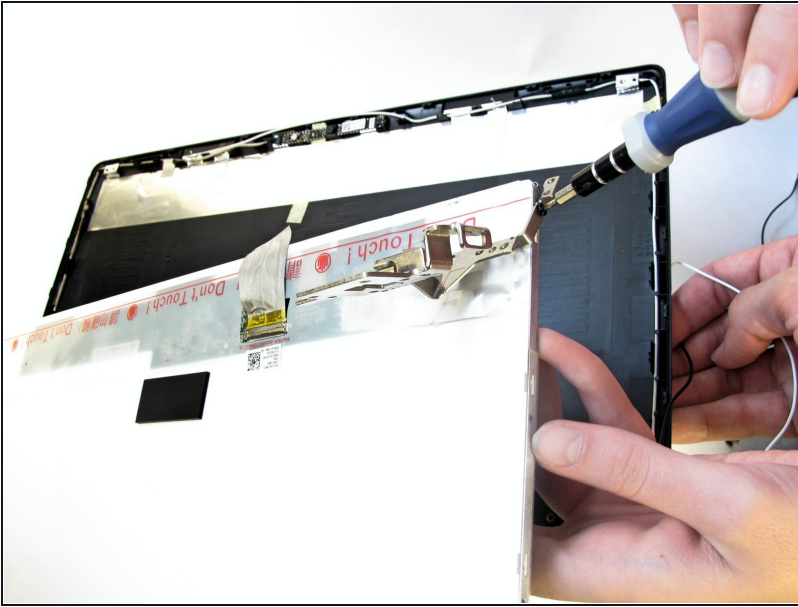
- Gently tug on the ribbon to remove it from the LCD.

Step 35



- Now that the ribbon has been detached from the back, carefully remove the LCD.

Step 36 — Display Hinges



- On both sides of the LCD, there will be a screw that attaches the hinges to the display. Use the Phillips #0 screwdriver to unscrew the two 3.2 mm Phillips #0 screws and detach the hinges.

Step 37



- Once the hinge has been unscrewed, remove it from the LCD.

To reassemble your device, follow these instructions in reverse order.