



# Lenovo IdeaTab A2109 System Board Replacement

Replace the system board in your Lenovo IdeaTab A2109.

Written By: Kyle



---

# INTRODUCTION

Use this guide to replace the system board



## TOOLS:

- [iFixit Opening Tools](#) (1)
  - [Phillips #00 Screwdriver](#) (1)
  - [Tweezers](#) (1)
-

## Step 1 — Battery



- Look at the back of the tablet and locate the speakers on top of the rear cover.
- There is a smaller indentation in the plastic cover that runs across the top of the device.
- Wedge the plastic opening tool, under the middle of the cover as shown, then push up and the cover will pop off.

## Step 2

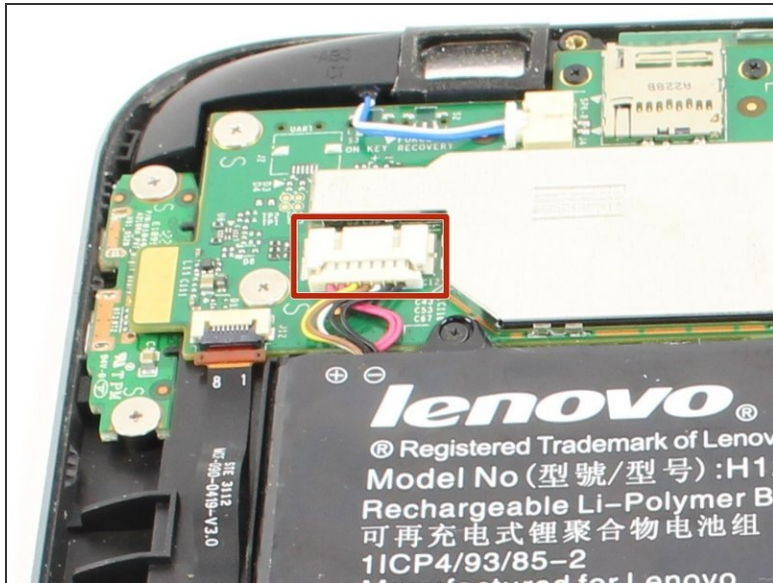


Remove SD card if present.

- Remove two black 3mm Phillips #00 screws.

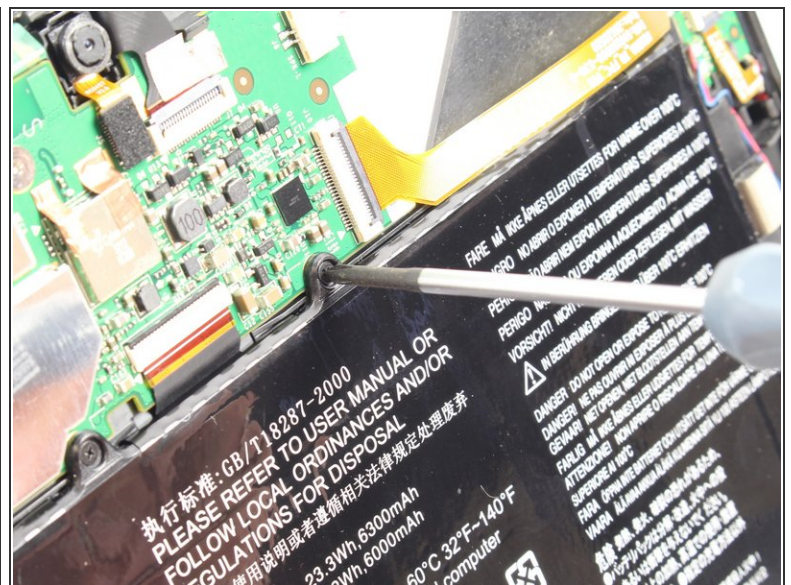


## Step 3



- Disconnect battery power connector by pinching the connector with tweezers, and sliding it out of the housing.

## Step 4



- Remove seven black 3mm Phillips #00 screws.
- ① The top right corner screw is underneath a yellow ribbon. Lift the ribbon up without disconnecting it and unscrew the screw.

This document was generated on 2020-11-18 12:51:38 AM (MST).

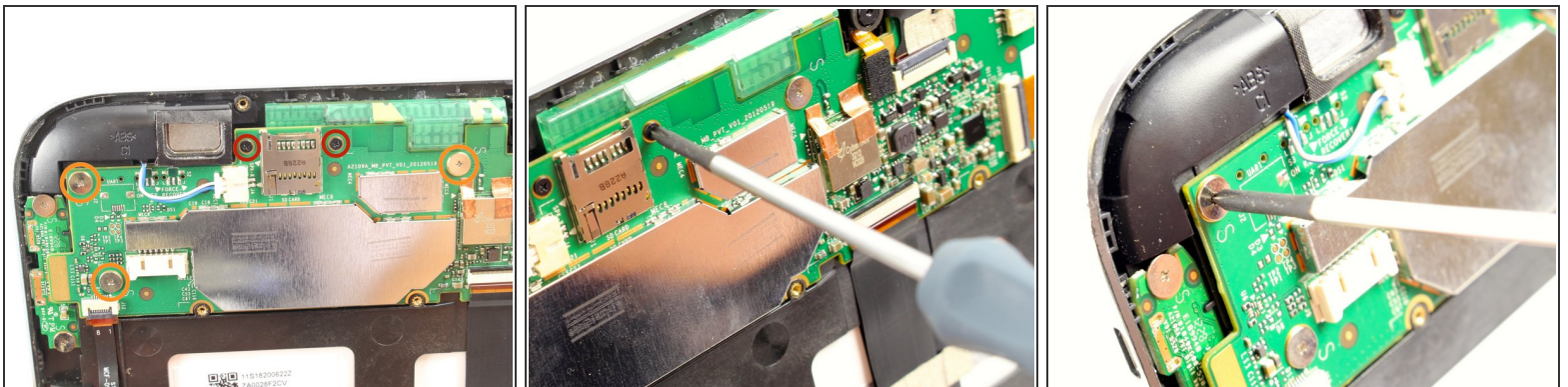


## Step 5



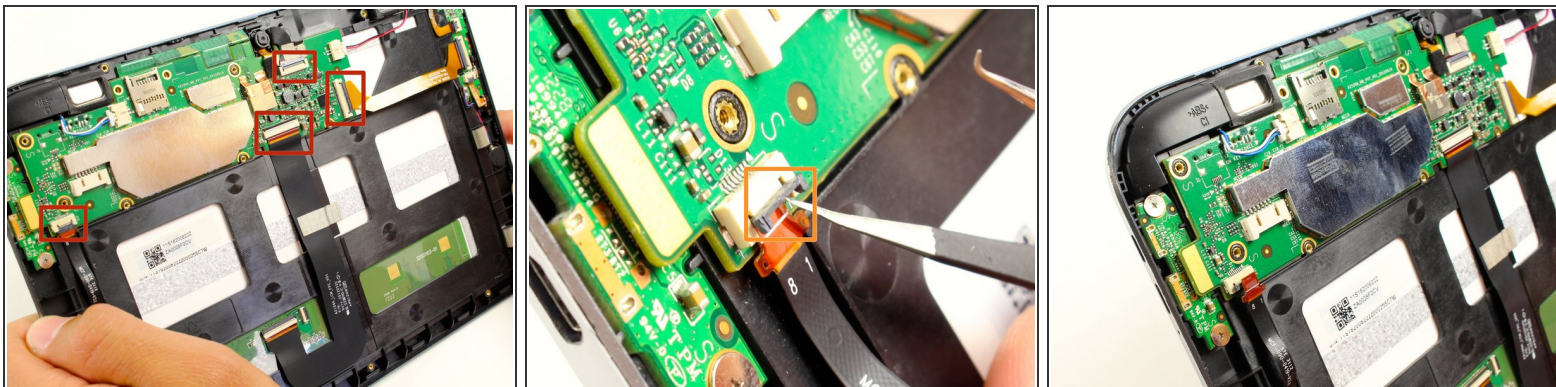
- Now you can take the battery out in order to either replace it or continue disassembling the device.

## Step 6 — System Board



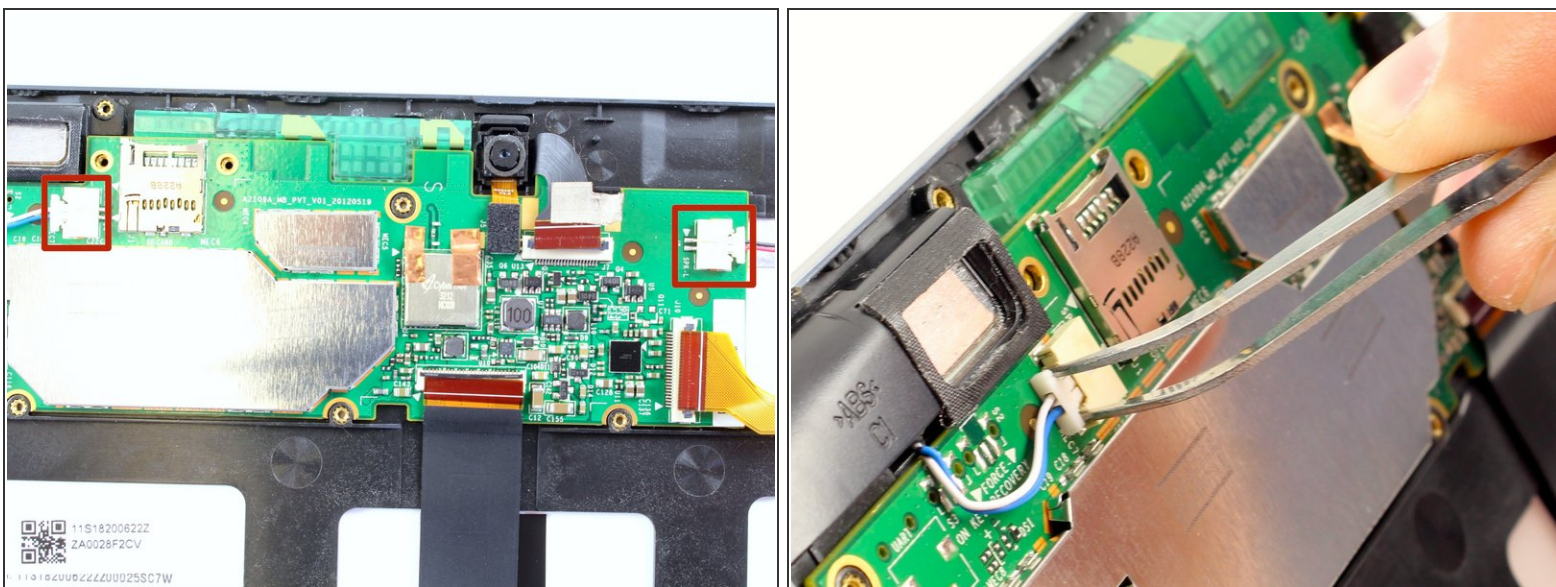
- Remove two black 3mm Phillips #00 screws.
- Remove three silver 1.8 mm Phillips #00 screws.

## Step 7



- Use tweezers to flip up the small black plastic locks on all four connections.
- Carefully remove each of the exposed ribbons.

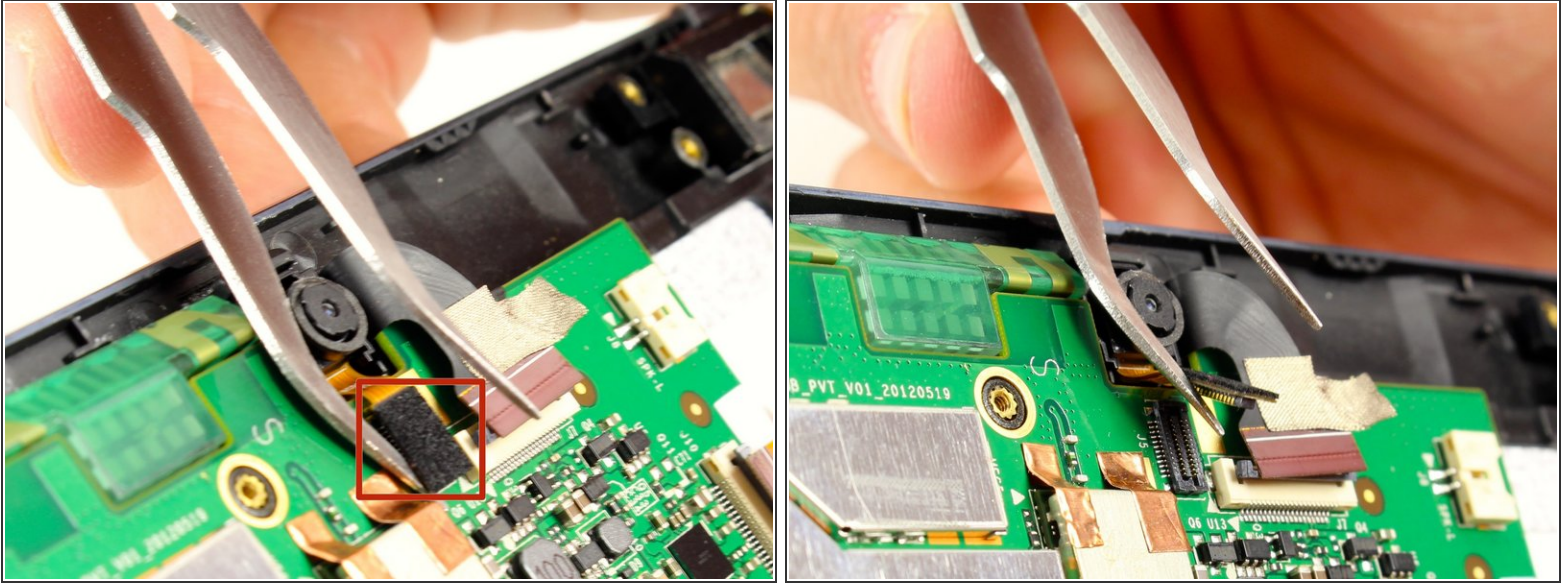
## Step 8



- Disconnect the two speaker connectors by pinching them with tweezers and sliding them out from the system board housing.

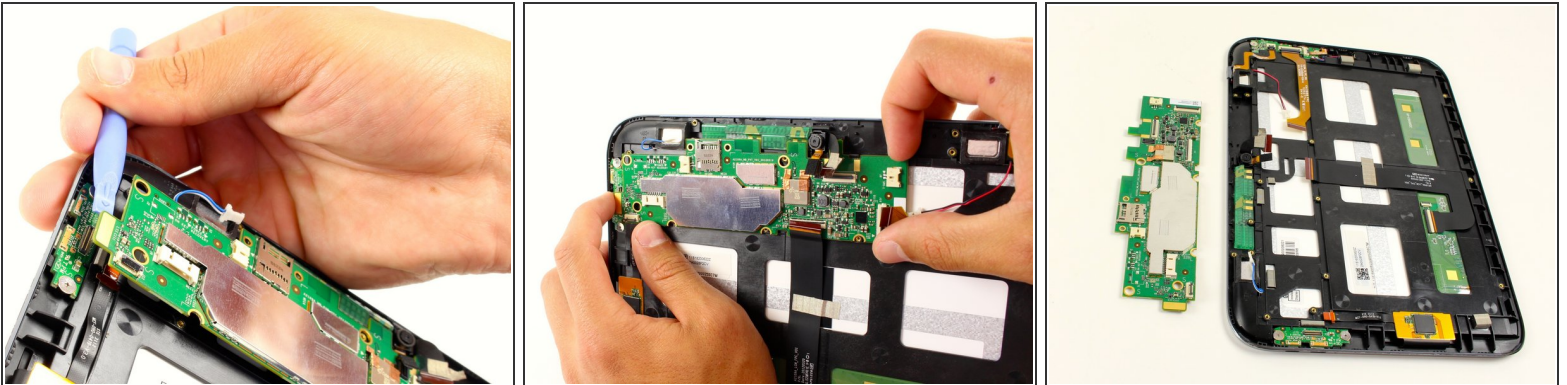


## Step 9



- Use tweezers or your finger nail to disconnect the camera attachment by flipping up the black rectangular connector.

## Step 10



- Disconnect the HDMI connection with the system board
- Use a plastic opening tool to pry up the system board, and you will hear a pop as it comes free.
- Slide out the system board from its housing tab on the upper right corner.
- Pull the board slowly away from the tab, and it will pop out.

To reassemble your device, follow these instructions in reverse order.