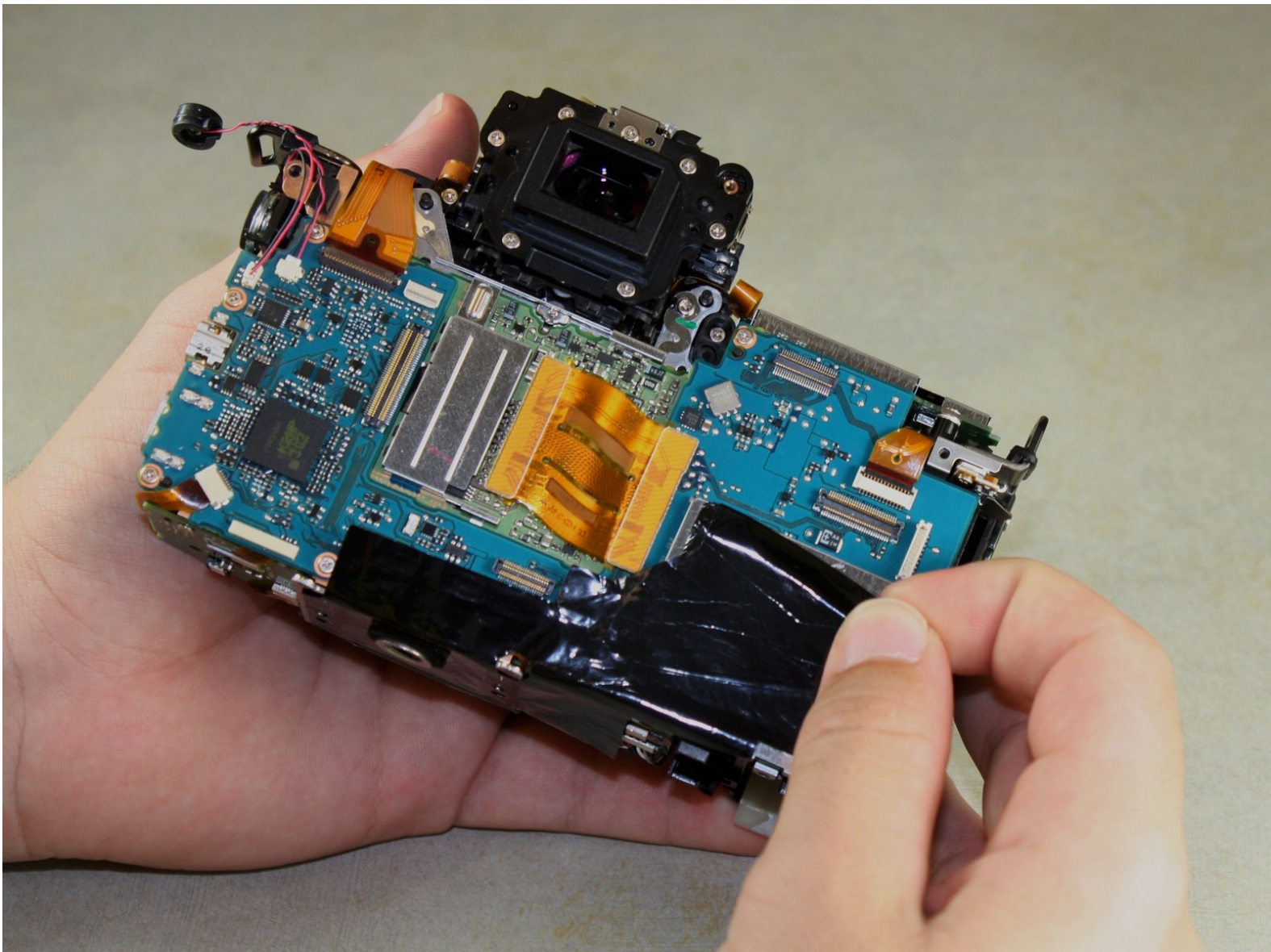




# Canon EOS 6D Image Sensor Replacement

Replace the image sensor in your EOS 6D.

Written By: Justin Thomas



---

# INTRODUCTION

Use this guide to replace a malfunctioning image sensor in your EOS 6D.

---



## TOOLS:

- [Phillips #00 Screwdriver](#) (1)
  - [Spudger](#) (1)
  - [Tweezers](#) (1)
  - [T6 Torx Screwdriver](#) (1)
-

## Step 1 — Rear Body Panel



- Remove the viewfinder cover by pinching the sides and sliding it upward.

## Step 2



- Open the battery door on the bottom of the camera.
- Use your thumb to slide the small black tab on the inside of the battery door up and pull the door off the camera.



### Step 3



- Slide your fingernail or the flat end of the spudger underneath the rubber covering and gently peel it off all sides of the camera.

### Step 4



- Open the covers to the HDMI/AV/MIC ports on the side of the camera by gently pulling outward on the bottom of the covers.
- Rotate the covers to the side so that you can see the connection ports inside.
- Remove the following screws:
  - Two silver 5mm Phillips #00
  - One black 6mm Phillips #00

## Step 5



- Remove the cover to the HDMI/AV/MIC ports by gently lifting the tab on the bottom edge of the camera.

## Step 6



- Rotate your camera so the bottom side is facing you.
- Remove the following screws:
  - One 6mm Phillips #00
  - Two 3mm Phillips #00

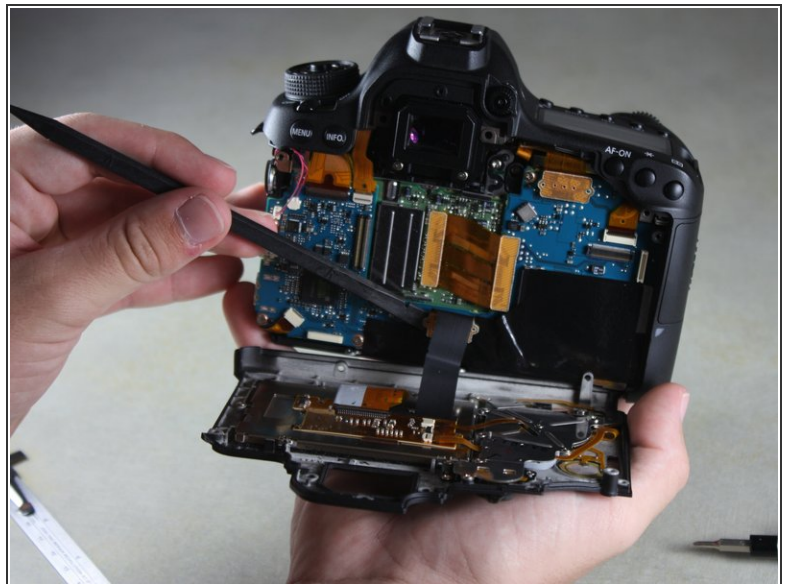



## Step 7



- Rotate your camera so the back is facing you.
- Remove the following screws:
  - Three silver 5mm Phillips #00
  - Two black 6mm Phillips #00
  - One black 4mm Phillips #00

## Step 8



 A black ribbon wire connects the rear panel to the inside of the camera. Breaking this wire would make your rear screen and buttons non-functional.

- Carefully use your fingers to tilt the back panel downward to about a 90 degree angle.
- Use the flat end of the spudger to gently pry off the ribbon wire from the inside of the camera.

This document was generated on 2020-11-21 02:13:10 AM (MST).

## Step 9 — Front and Top Body Panels



- Remove the 8mm Phillips #00 screw from the bottom of the front of the camera.

## Step 10



- Rotate the camera so the side with the SD card slot is facing you.
- Remove the 4mm Phillips #00 screw from the bottom edge of this side.



## Step 11



- Rotate the camera so the bottom is facing you.
- Remove the following screws:
  - Two 8mm Phillips #00
  - One 4mm Phillips #00

## Step 12



- Remove the bottom panel from the camera by using your fingers to pull outward on the tab inside the battery compartment.



## Step 13



- Rotate the camera so the front is facing you.
- Remove the following screws:
  - Three 5mm Phillips #00
  - Two 6mm Phillips #00
  - One 4mm Phillips #00

## Step 14



- Rotate the camera so the side with the SD card slot is facing you.
- Remove the following screws:
  - One 4mm fine-thread Phillips #00
  - Two 4mm coarse-thread Phillips #00

## Step 15



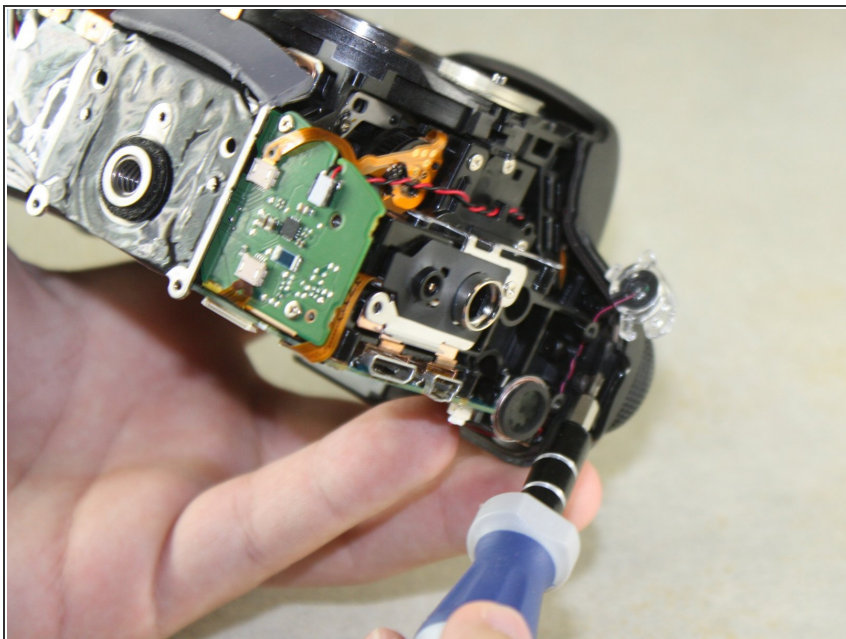
- ⚠ The red speaker wire is attached to the inside of the front panel. Opening the front panel forcefully may break it.
- Slowly fold the front panel to the right without pulling it away from the right edge of the camera.

## Step 16



- Remove the 4mm Phillips #00 screw on the inside of the front panel to separate the panel from the speaker wire.

## Step 17



- Remove the 4mm Phillips #00 screw from the inside of the top panel, below the strap hook.

## Step 18



- Remove the 4mm Phillips #00 screw from the inside of the top panel, below the shutter button.



## Step 19



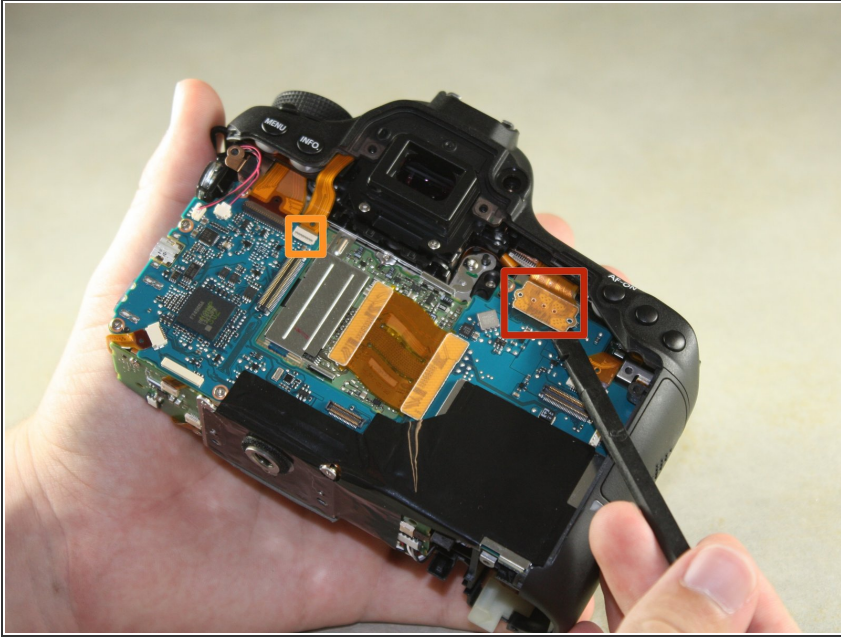
- Rotate the camera so the top is facing you.
- Remove the 6mm Phillips #00 screw from next to the analog screen.

## Step 20



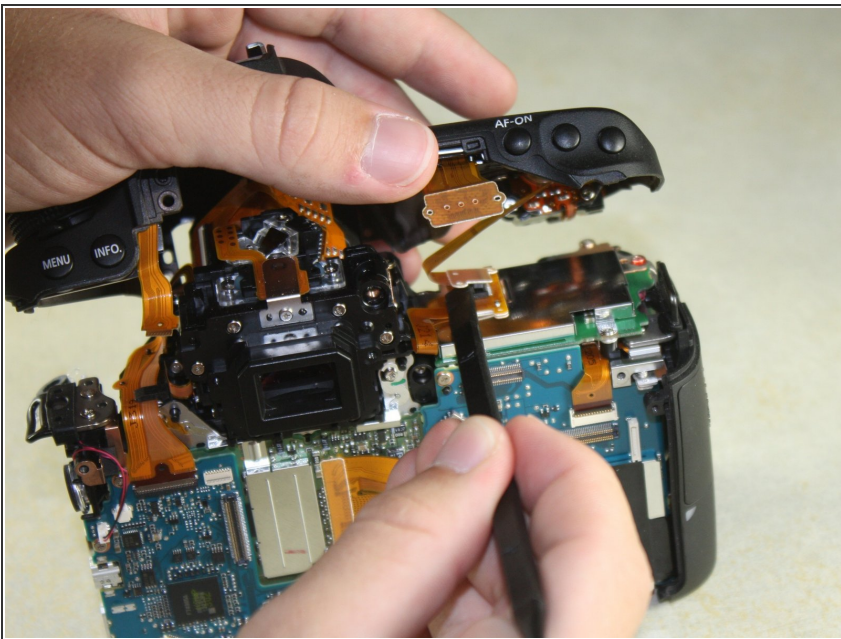
- Rotate the camera so the back is facing you.
- Remove the Phillips #00 screw from the viewfinder focus.

## Step 21



- Carefully detach the two light brown ribbon wires on the top panel:
  - The right ribbon by prying it out with the flat end of the spudger.
  - The left ribbon by using tweezers to gently wiggle it out toward the top.

## Step 22



- ⚠ A ribbon wire connects the inside of the top panel to the body of the camera.
- Slowly lift the top panel to about an inch above the body of the camera.
- Carefully use the flat end of the spudger to detach the ribbon wire from the top of the camera.

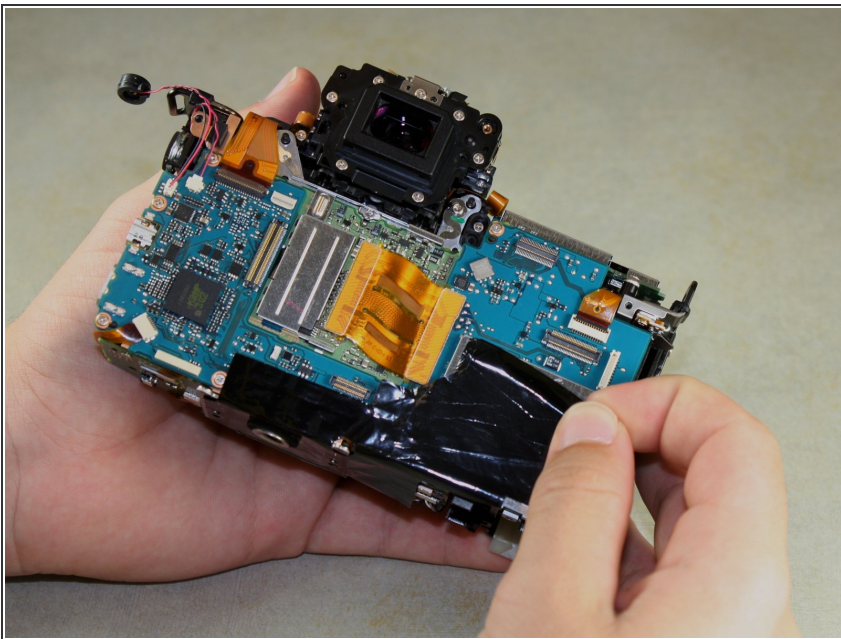


## Step 23



- Grip the remaining side panel with your fingers and gently pop it off the camera.

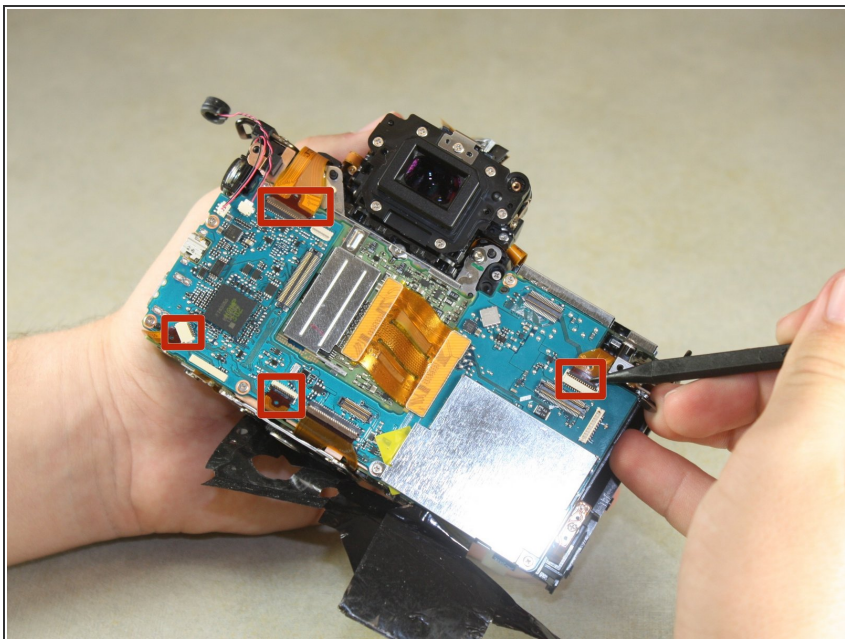
## Step 24 — Image Sensor



- Carefully peel the black tape off from across the back of the camera.

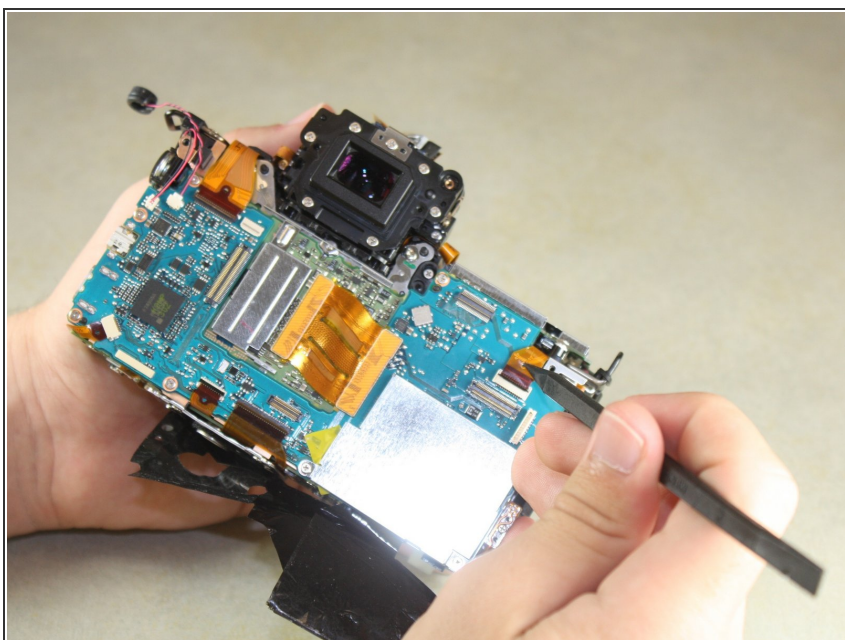


## Step 25



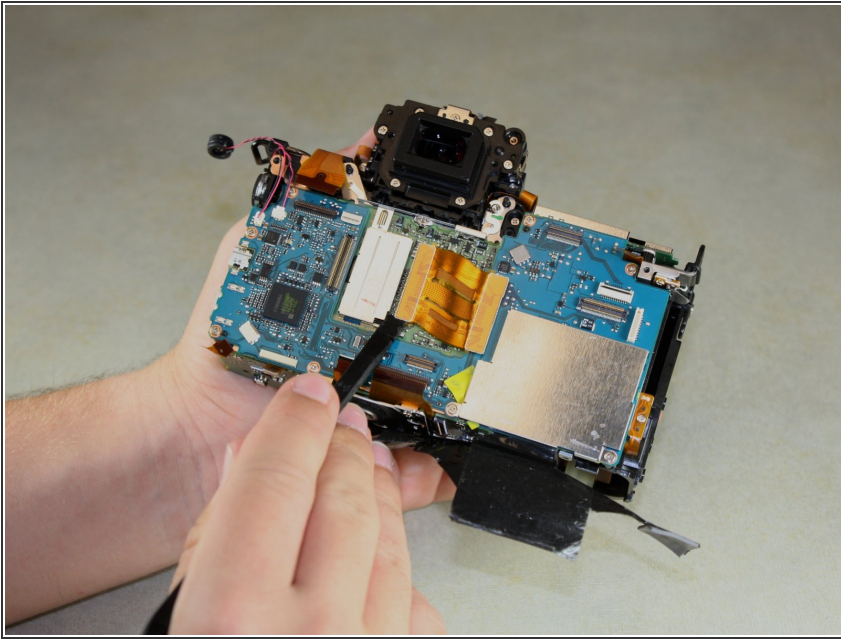
- Use the pointed end of the spudger to lift up on the silver latches on four ribbon wires.

## Step 26



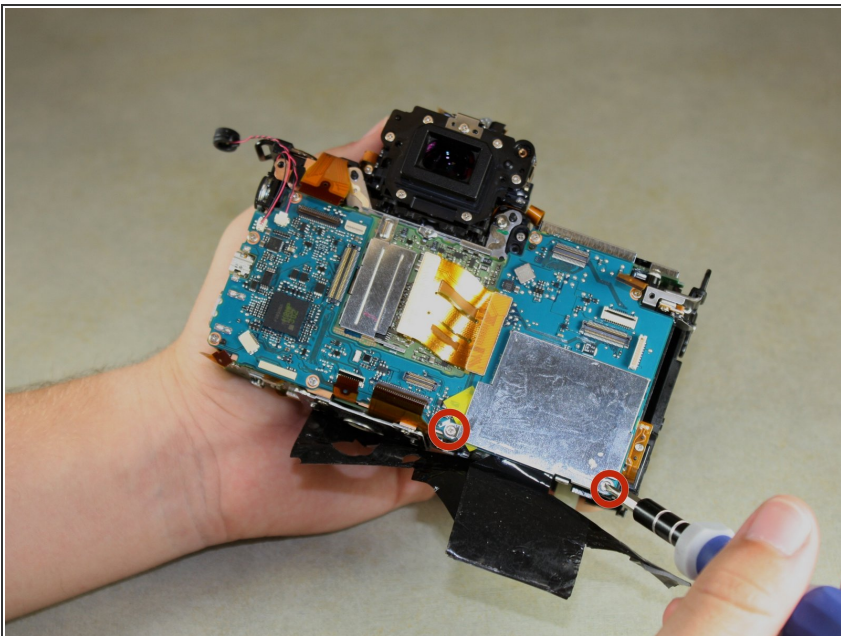
- Use the pointed end of the spudger to carefully slide out the four light brown ribbon wires.

## Step 27



- Use the flat end of the spudger to lift up on the large, light brown ribbon wire in the middle of the camera.

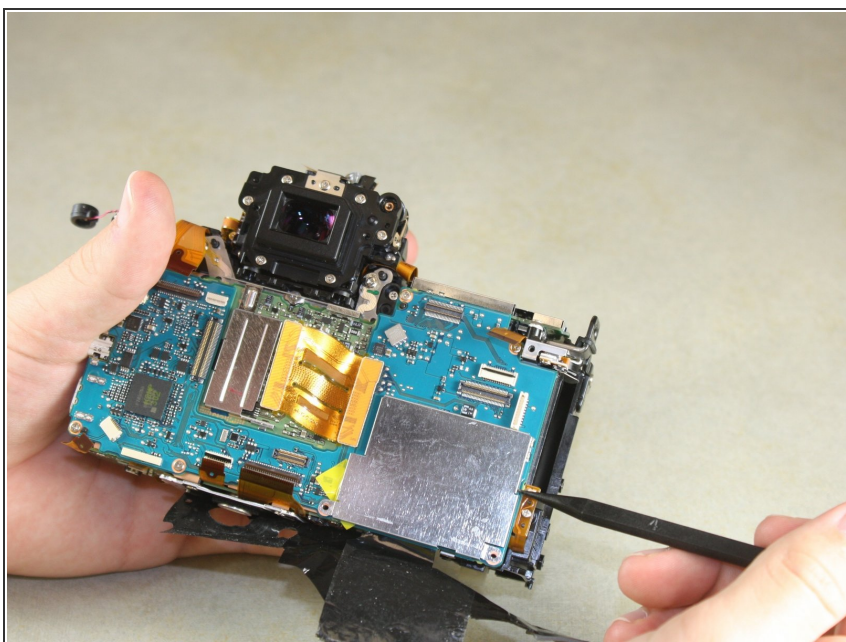
## Step 28



- Remove two 4mm screws from the metal plate on the back of the camera.

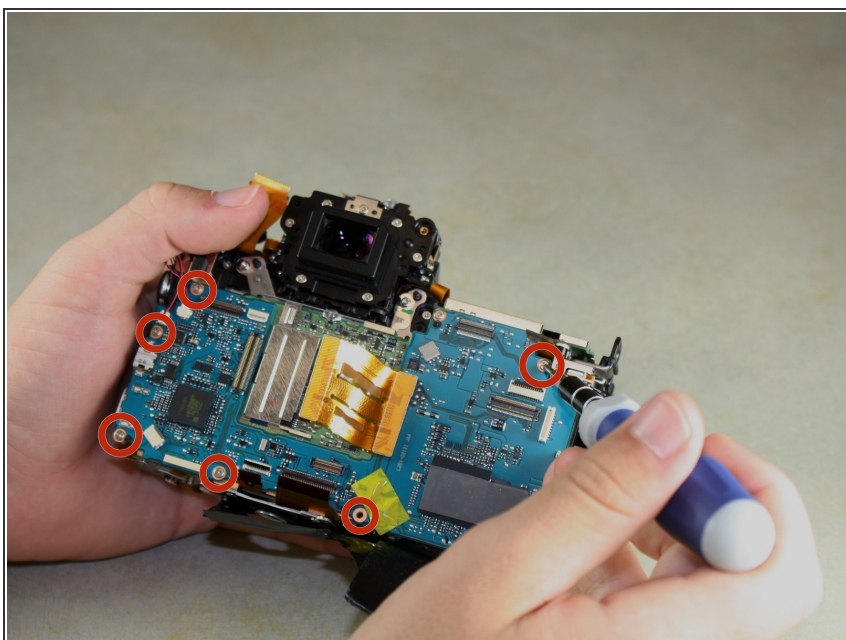


## Step 29



- Use the pointed end of the spudger to carefully remove the metal plate.

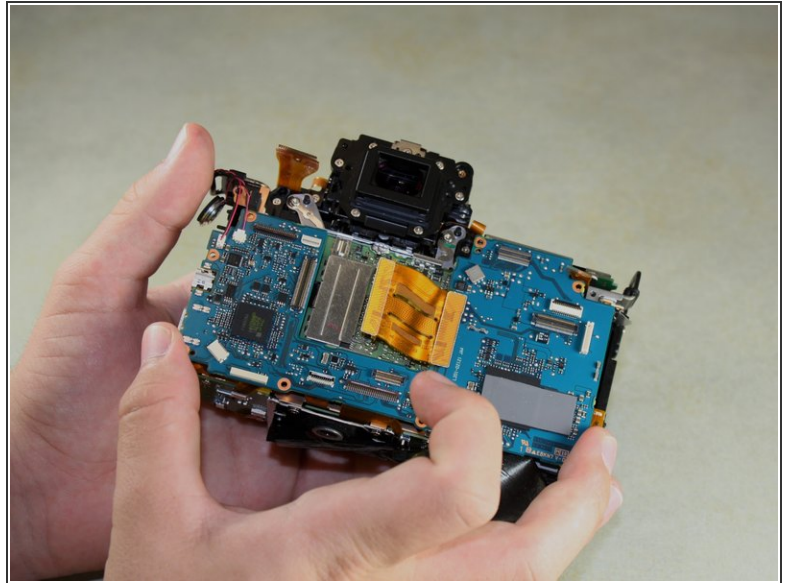
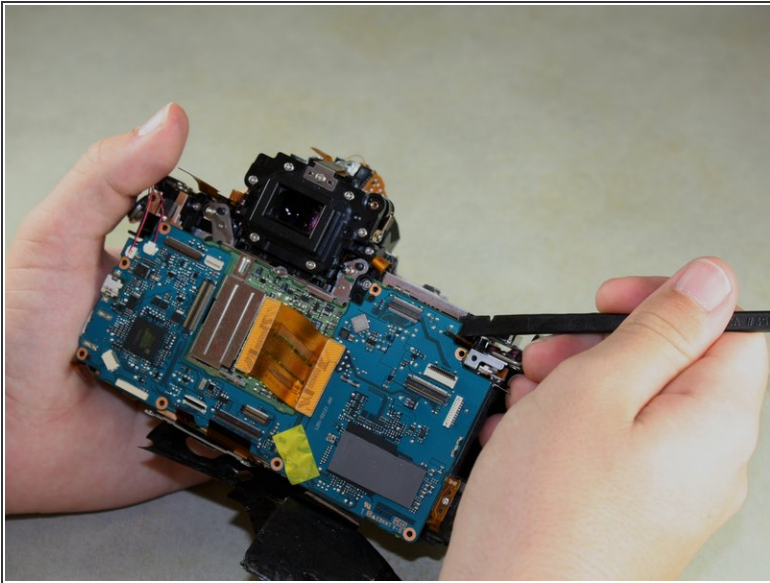
## Step 30



- Remove six 4mm Phillips #00 screws from the back of the camera.

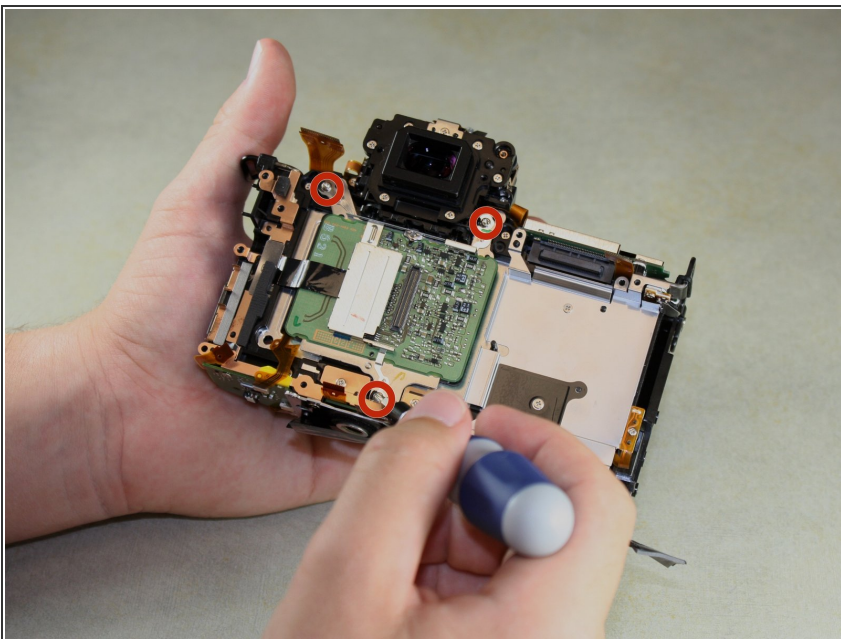


## Step 31



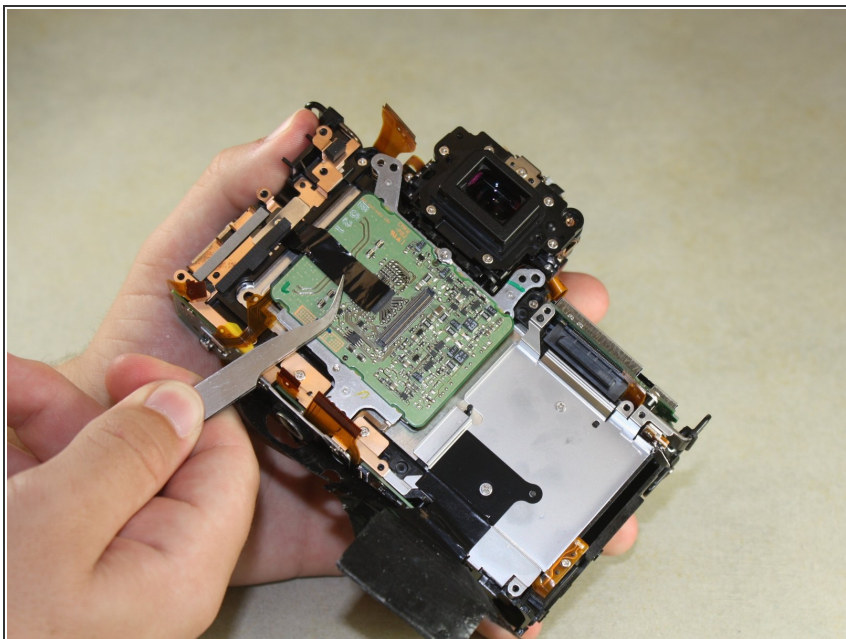
- Slide the flat end of the spudger under the top of the large blue panel and carefully pry it off.

## Step 32



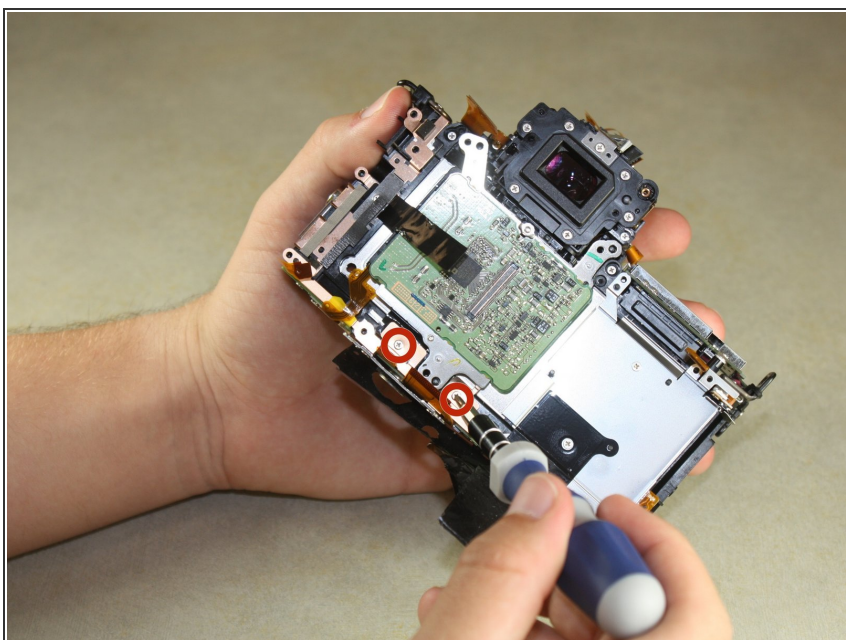
- Remove three 6mm Torx T6 screws from the back of the camera.

## Step 33



- Use tweezers to remove the small metal plate and the thin strip of black tape underneath it.

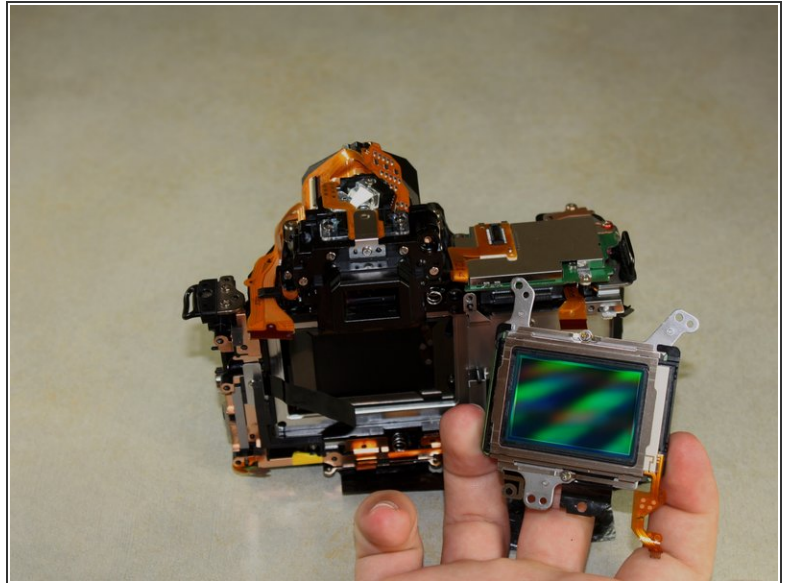
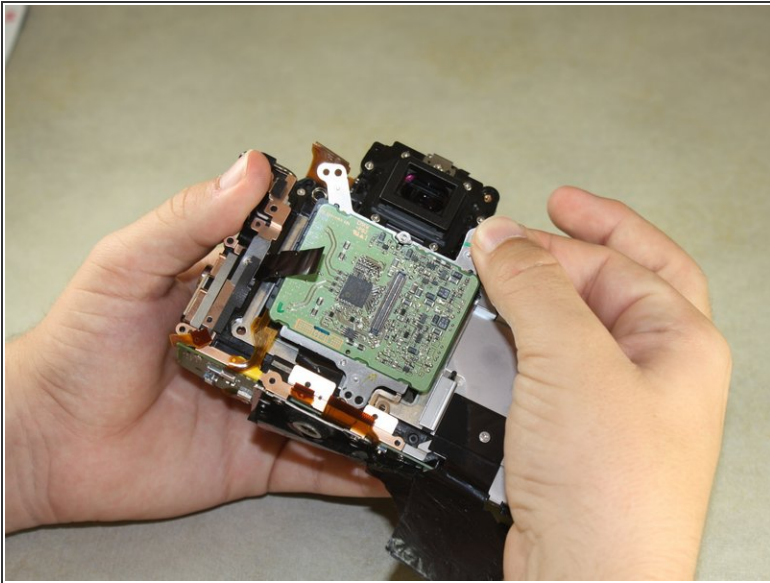
## Step 34



- Remove two Phillips #00 screws from the back of the camera.



## Step 35



- Use your fingers to grip the top of the image sensor and pull it slightly outward.
- Lift the sensor out toward the top of the camera.

To reassemble your device, follow these instructions in reverse order.