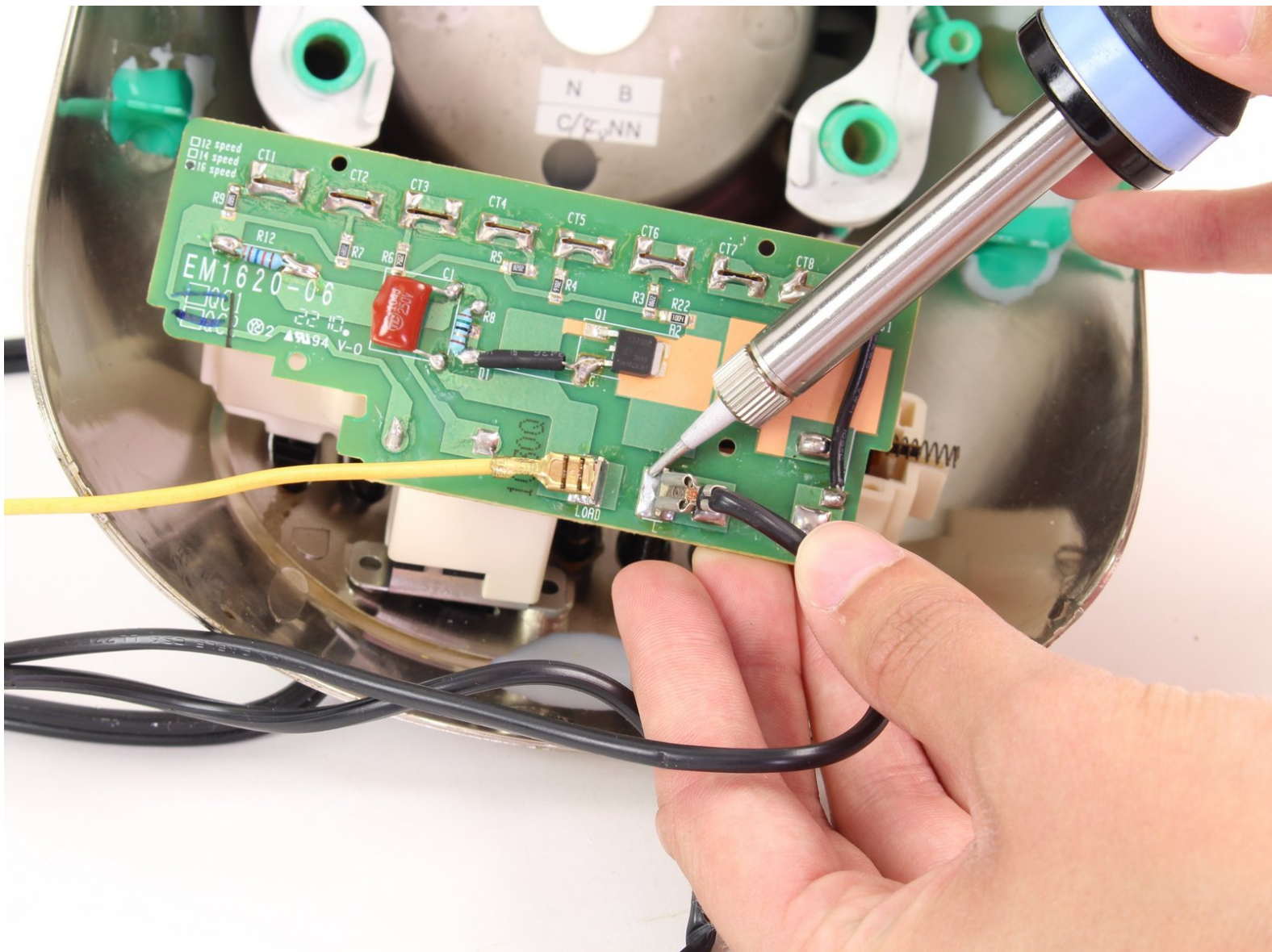




# Oster 16-Speed Blender Power Cord Replacement

This guide will teach you how to replace the power cord in case it does not work.

Written By: Dana





## TOOLS:

- [Solder](#) (1)
- [Soldering Iron](#) (1)
- [Phillips #1 Screwdriver](#) (1)
- [Smart Wrench](#) (1)
- [Phillips #2 Screwdriver](#) (1)

## Step 1 — Fan and Motor



- Remove the Blender Container from the Blender Base.

## Step 2



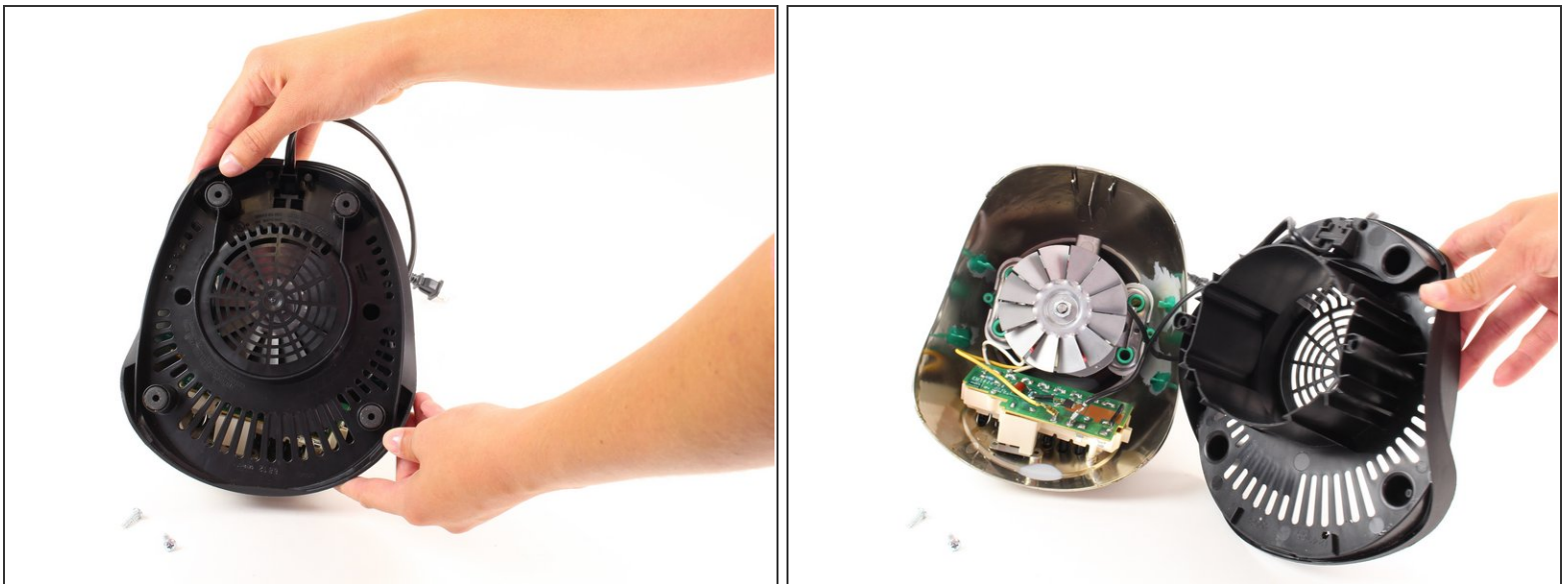
- Flip the blender so the bottom is facing you.

### Step 3



- Unscrew the 16mm screws located on the plastic bottom from the blender base using a Phillips #2 screwdriver.

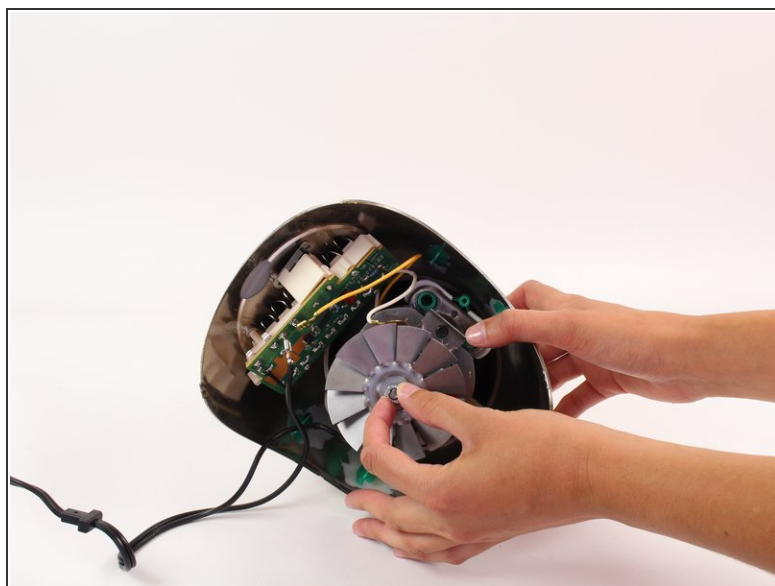
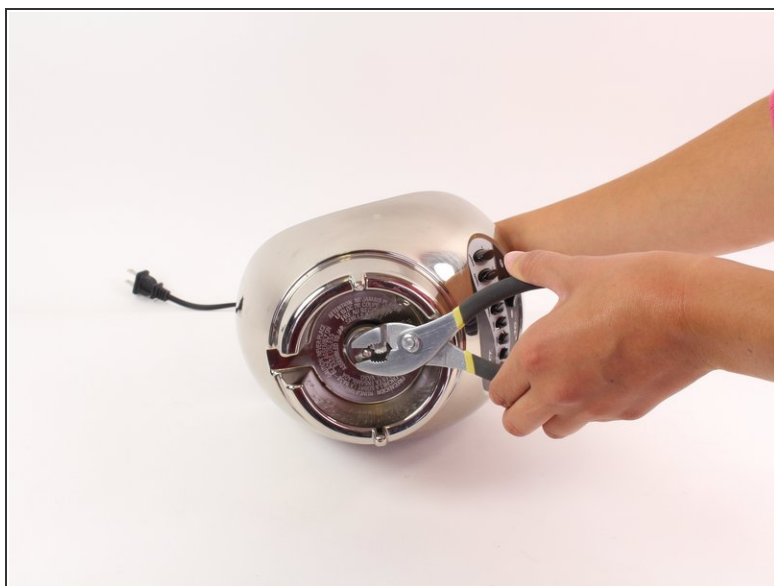
### Step 4



- Remove the plastic bottom from the base of the blender.

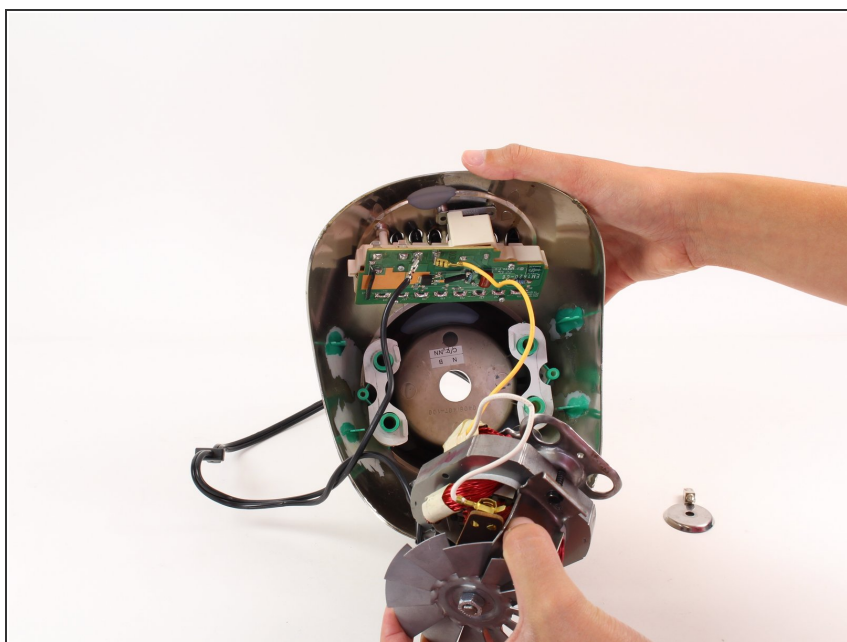


## Step 5



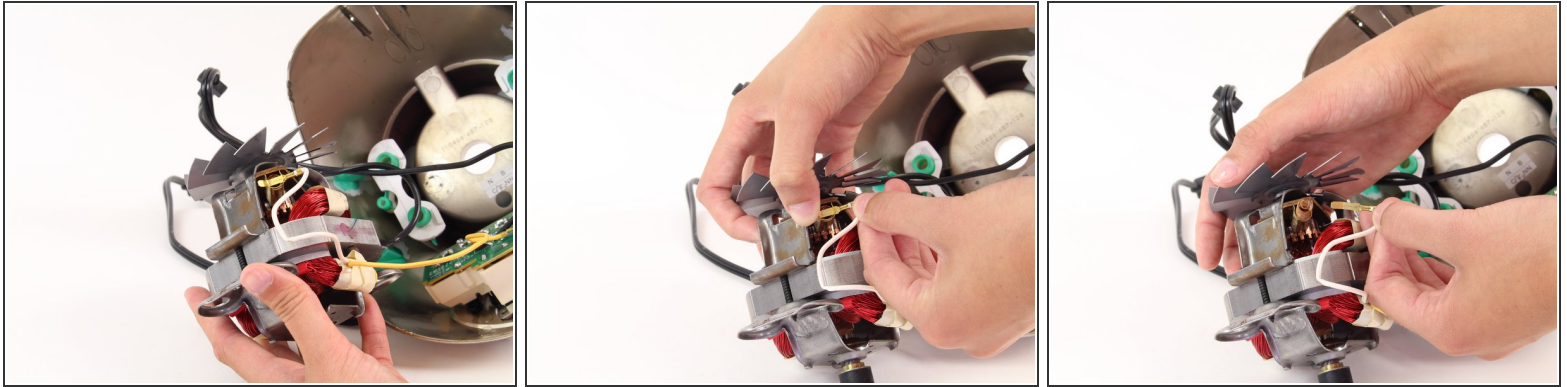
- Holding the center of the fan, grip the knob in the center of the top of the blender with a wrench and twist the wrench counterclockwise.

## Step 6



- Carefully remove the motor and fan from the base of the blender.

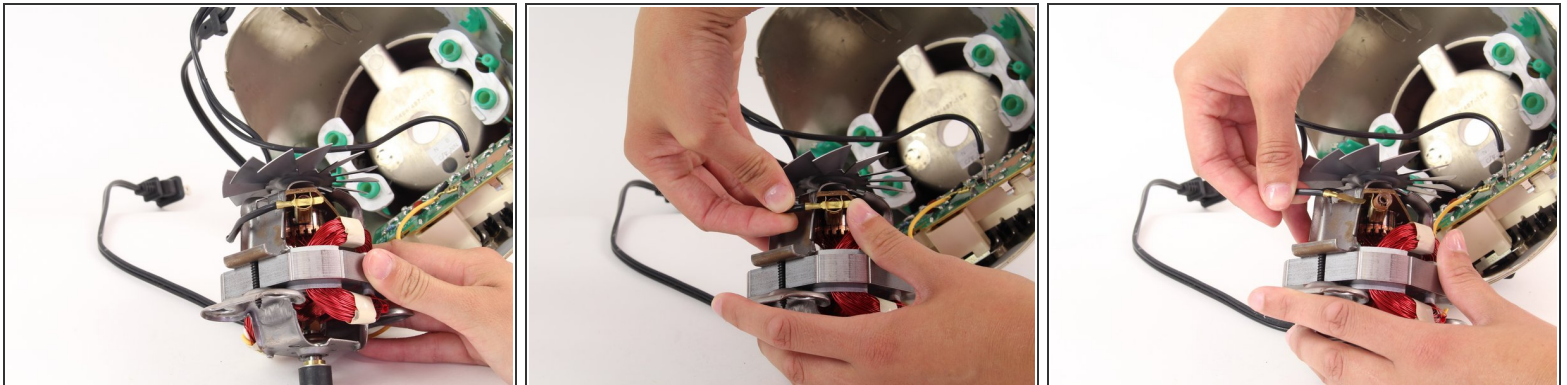
## Step 7



- Now, gently pull the white wire that is connected to the base and the motor.

⚠ Be careful, as there is a spring behind the contact points, that might try to shoot out and hurt you.

## Step 8

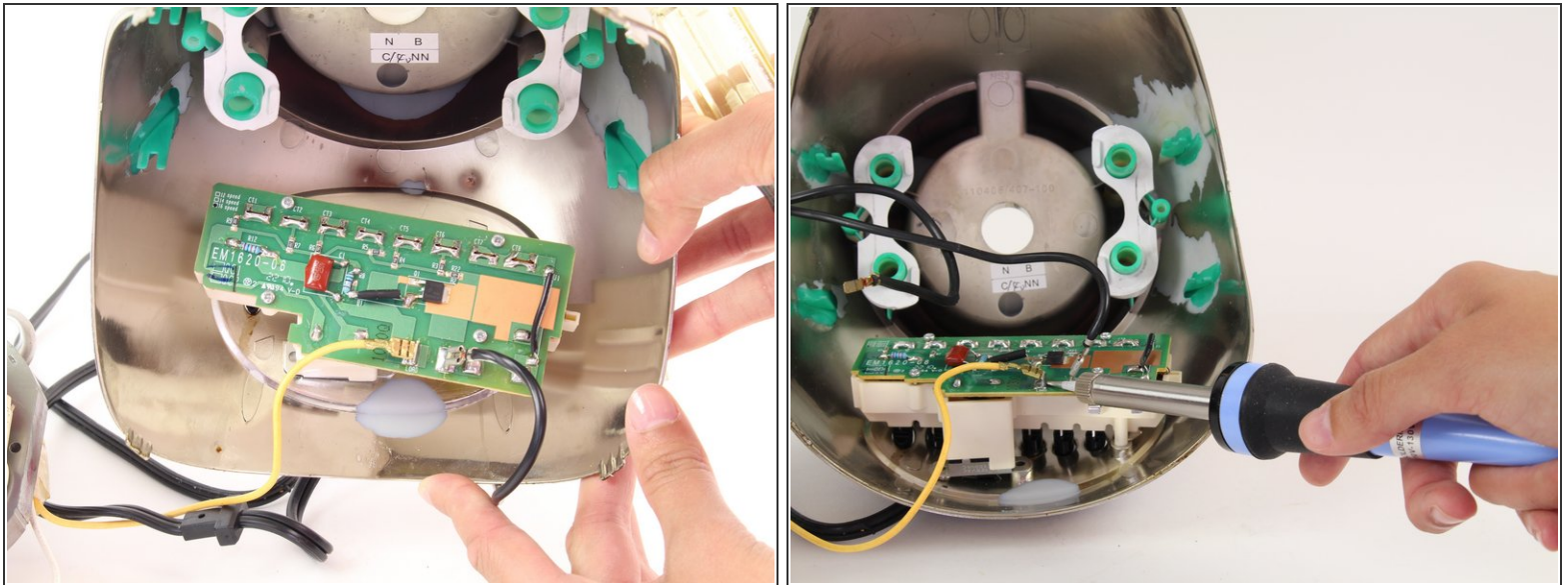


- Now, turn the motor over, and remove the black wire from the motor.

⚠ Again, be warned as there is another spring that wants to shoot out and hurt you here as well.



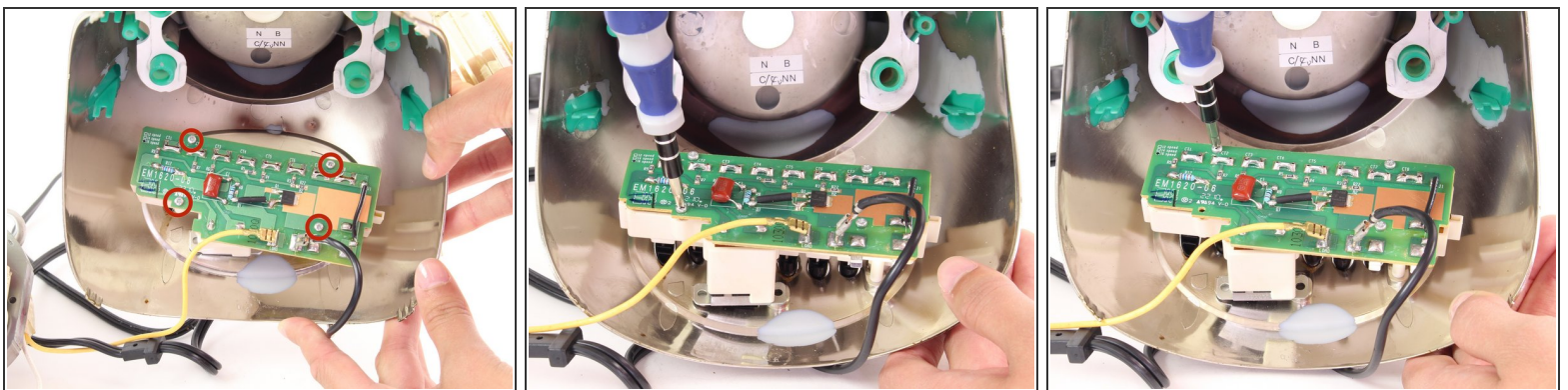
## Step 9



- Now de-solder the yellow wire from circuit board. De-solder the wire following these [instructions](#).

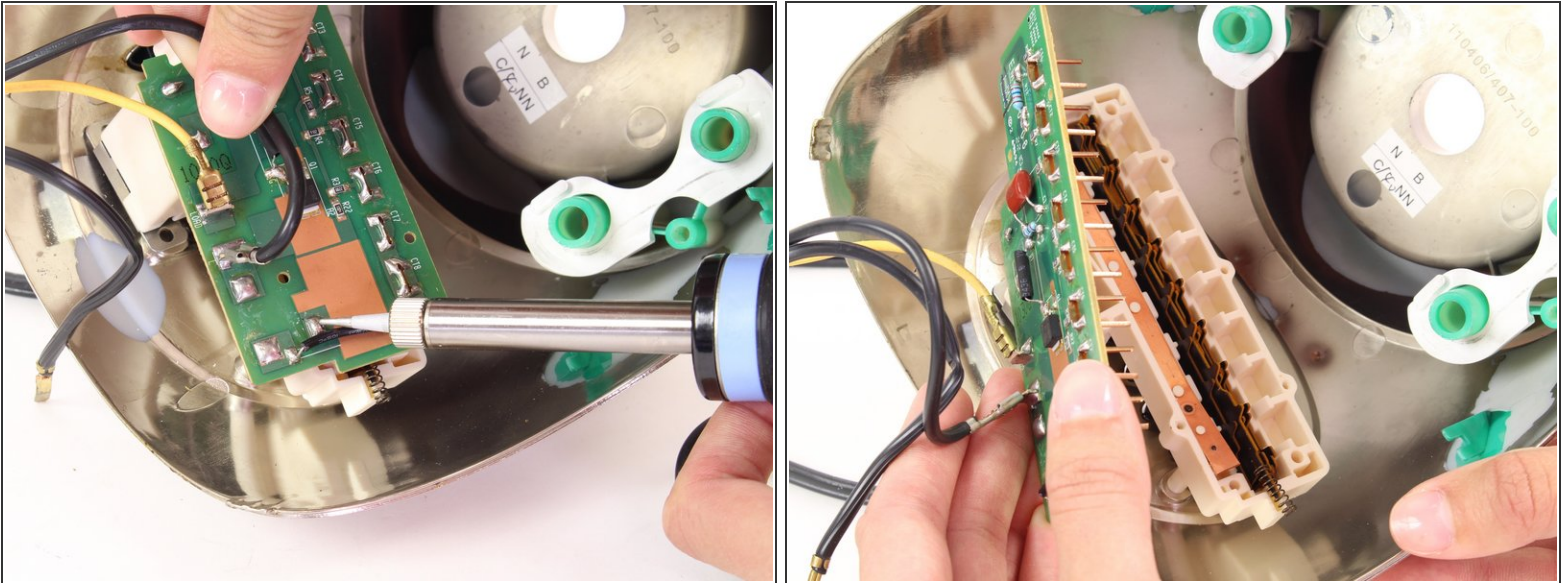
**i** Be careful, as there is another, black wire, nearby that you do not want to de-solder.

## Step 10 — Circuit Board



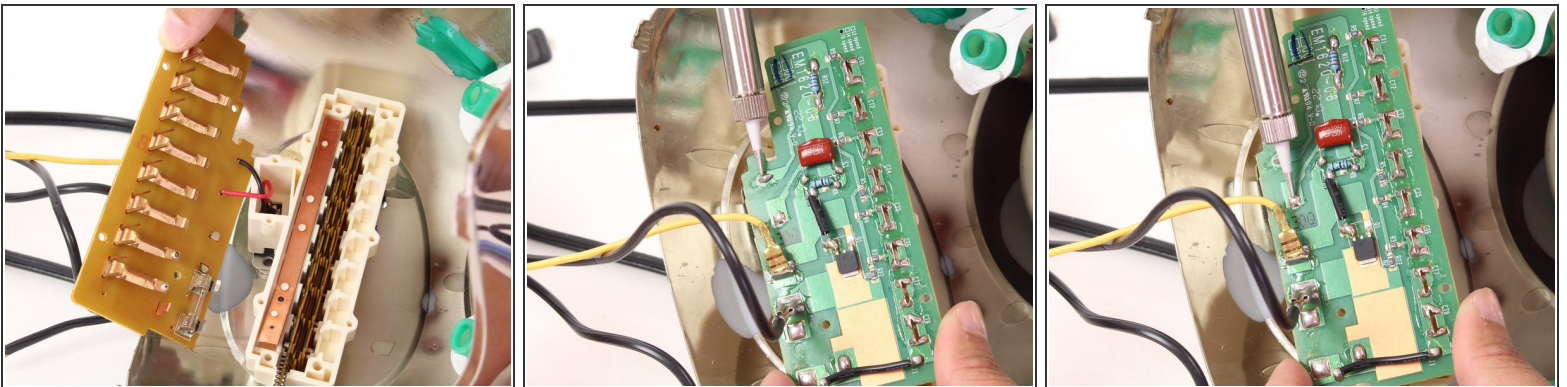
- Locate the four 11mm screws in the circuit board.
- Unscrew the four screws using the Phillips #1 screwdriver.

## Step 11



- Desolder the circuit board from the base at the indicated point, following the directions by clicking [here](#).
- Now separate the circuit board from the base.

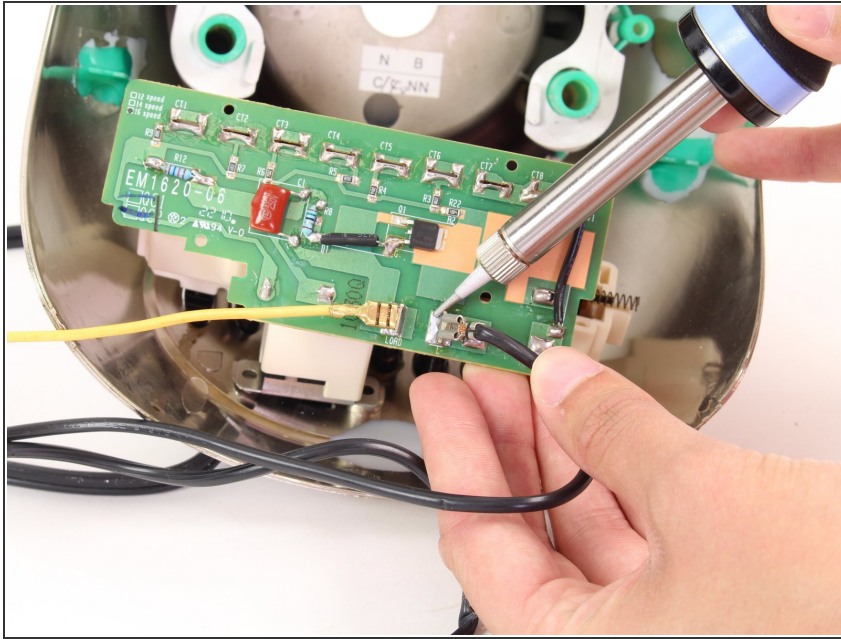
## Step 12



- You will see that the circuit board is still attached by a red wire and a black wire.
- Flip the circuit board back over and desolder at the indicated points following the directions given [here](#).



## Step 13 — Power Cord



- ① You do not have to completely remove the circuit board to replace the power cord. You can, if desired, skip the steps of de-soldering the yellow wire, and the circuit board from the base.
- De-solder the black wire from the circuit board, and then carefully remove the black wire.
- Now you can solder on the new power cord.

To reassemble your device, follow these instructions in reverse order.