



# Asus F6A-X2 Bottom Access Panel Replacement

A step-by-step guide for replacing the access panel on the bottom of the laptop.

Written By: Mikel Sangroniz



---

## INTRODUCTION

The access panel is a metal and plastic piece that encapsulates and protects the inner mechanical parts of a laptop. Be sure to have a compatible back panel for this laptop when replacing it.

---



### TOOLS:

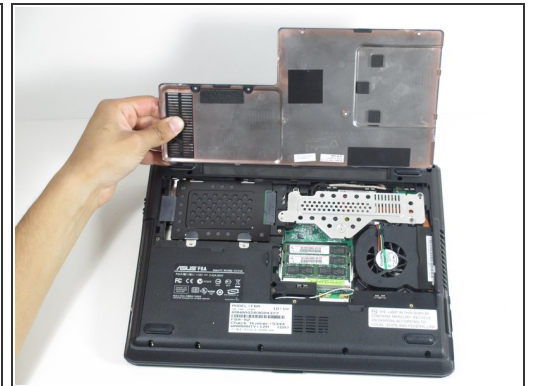
- [Phillips #1 Screwdriver](#) (1)
-

## Step 1 — Back Access Panel



- With the laptop facing down, rotate it so the battery pack is facing away from you.
- Remove the six 1.5 mm Phillips #1 screws on the back panel of the laptop.

## Step 2



- Insert a finger into one of the slots on the bottom panel.
- Gently lift the upwards, and the back panel of the laptop will come off easily.

To reassemble your device, follow these instructions in reverse order.