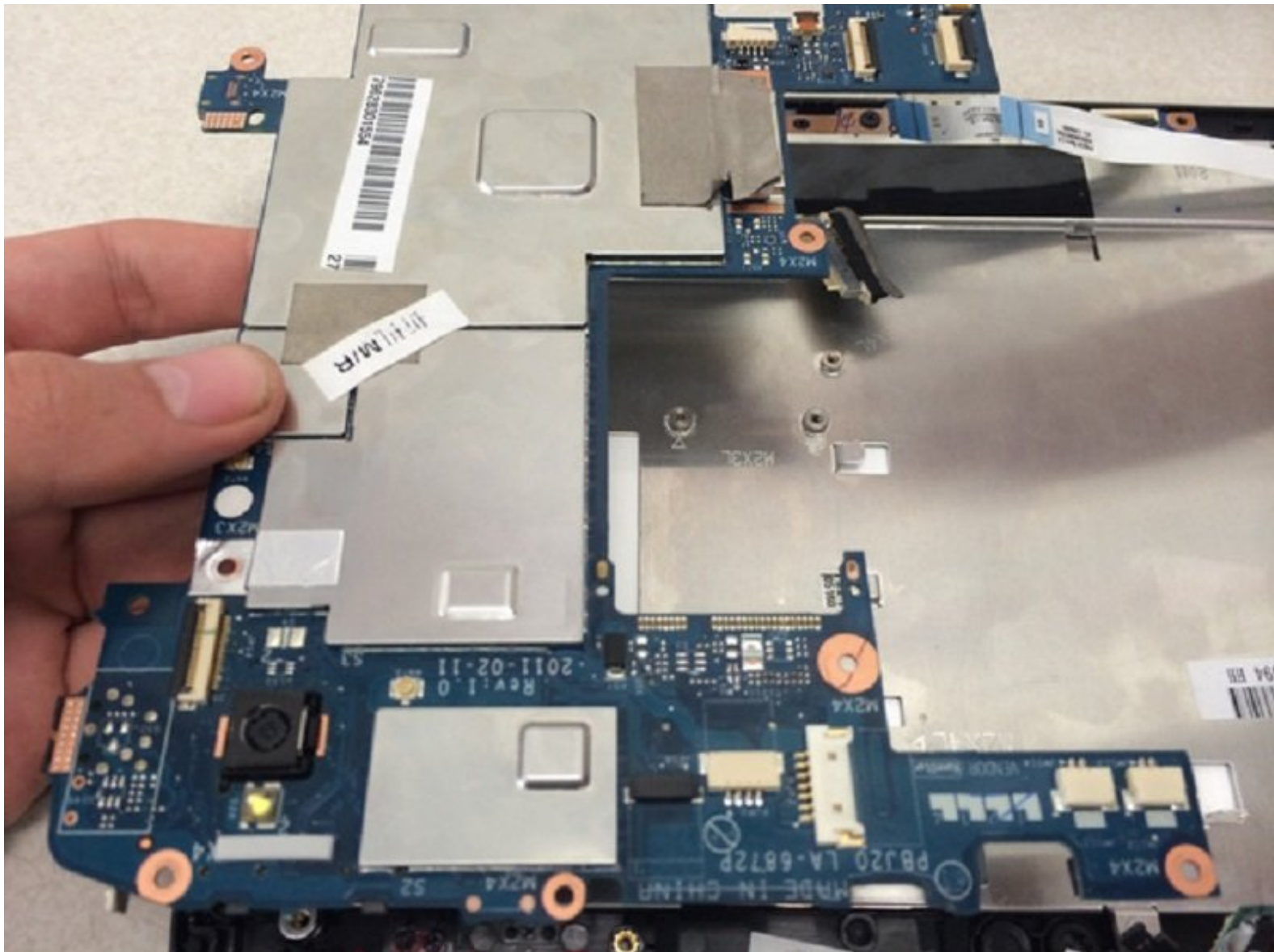




Acer Iconia Tab A500 Power Button/Motherboard Replacement

Mashing the button won't help, your button is broken! Read this guide to find out how to replace it.

Written By: Kyle Libby



INTRODUCTION

Heres how to get out your motherboard, if you want to solder on a new power button, or simply replace the whole thing.



TOOLS:

- [1.5 mm Flathead Screwdriver](#) (1)
 - [Phillips #1 Screwdriver](#) (1)
 - [Spudger](#) (1)
-

Step 1 — Back Case



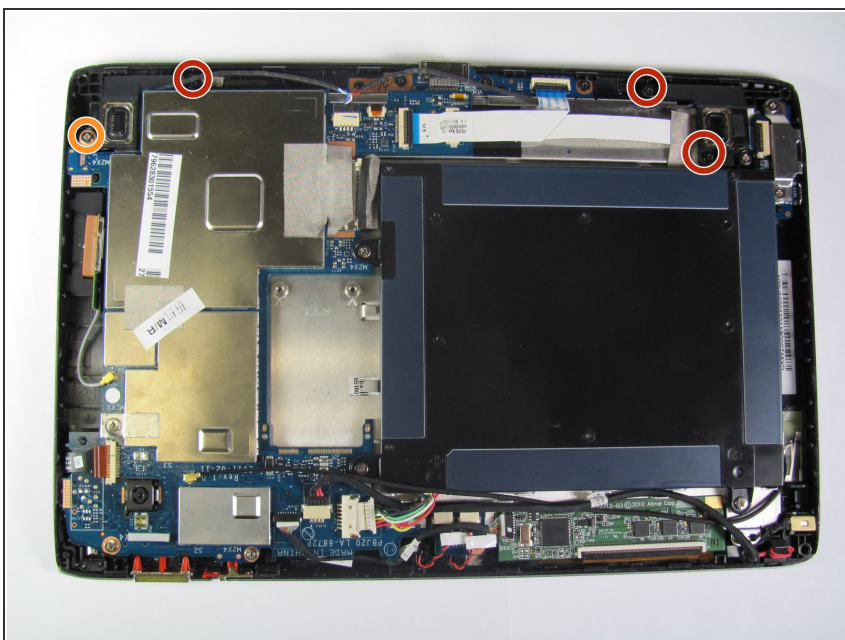
- To start, gently separate one corner of the case using the black spudger.

Step 2



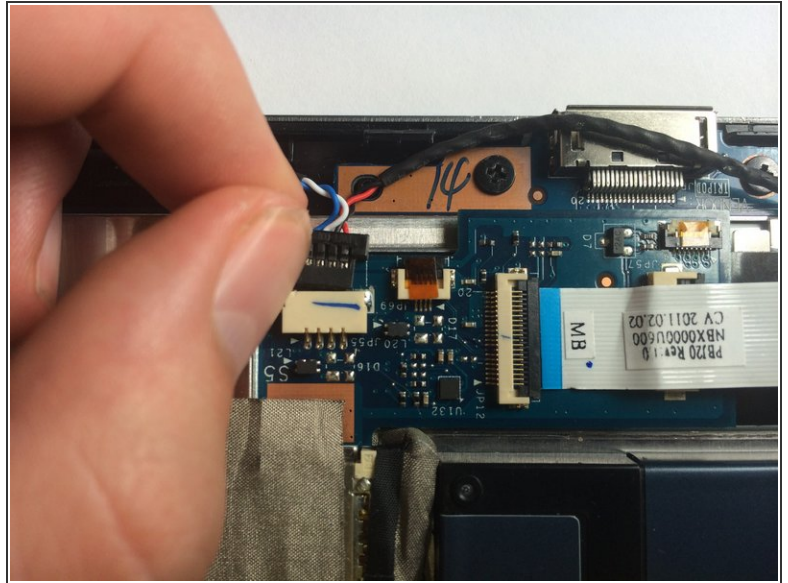
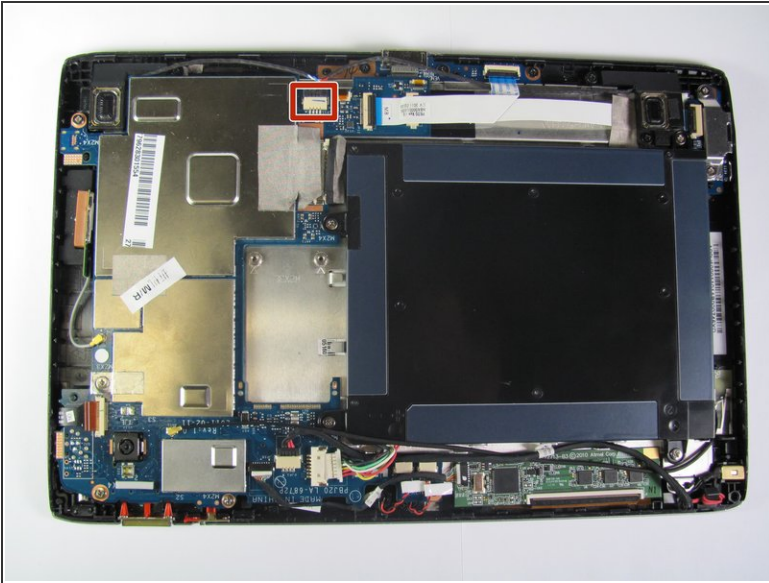
- Once you have successfully pried the spudger in between the front case and back case, continue do so around the entire tablet until the back case is completely disconnected.

Step 3 — Speakers



- Locate the 4 screws and cable that hold in the two speakers.
- Use the Phillips #1 screwdriver to remove these 2mm black screws.
- Remove the 2mm silver screws.
- ⓘ Not all 4 screws are going to be the same kind. This will not affect the speaker replacement.

Step 4



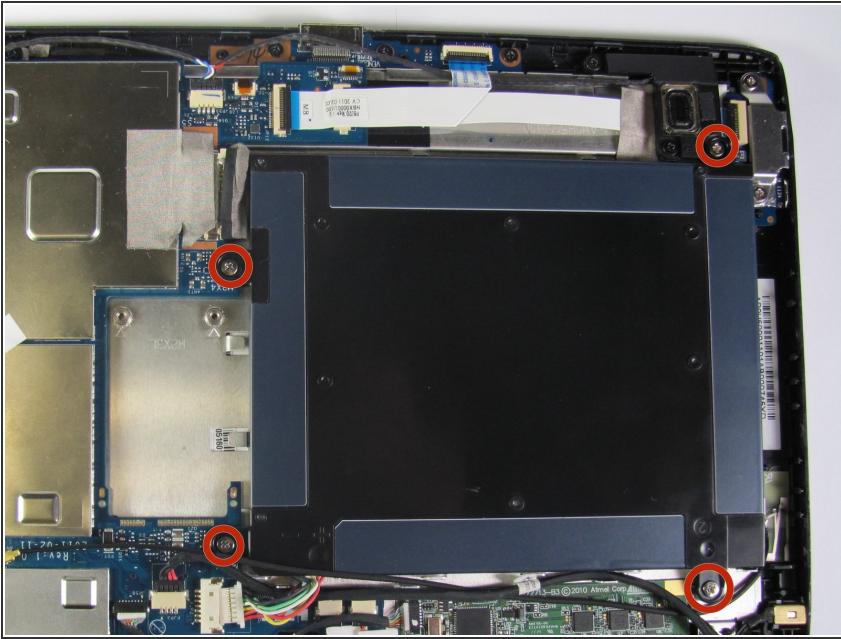
- Carefully remove the connector cable by pushing on the rim of black plastic insert.

Step 5



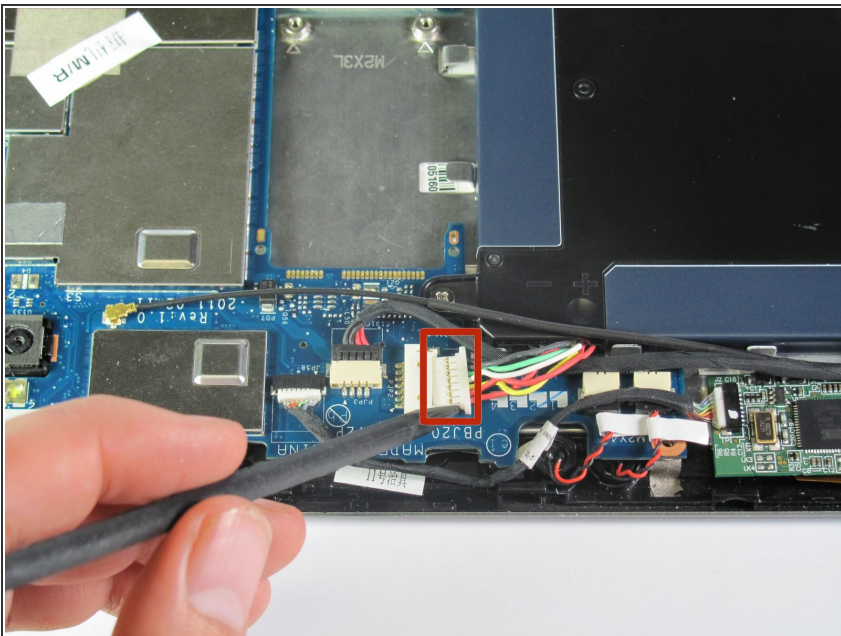
- Unfortunately, the top speaker is a wedged under the motherboard.
- To get this speaker out, use the spudger and gently pry it out.

Step 6 — Battery



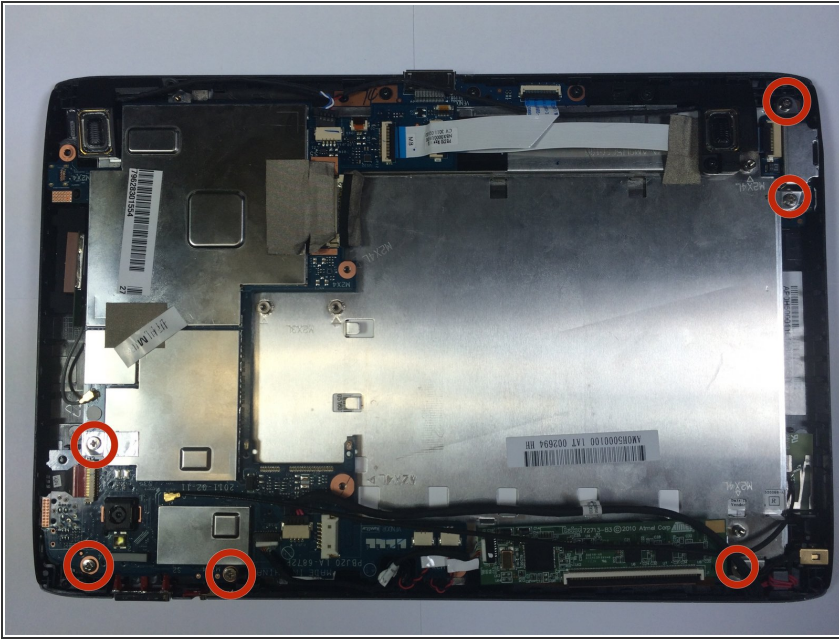
- Remove the 5mm screws that are securing the battery to the rest of the tablet.
- Use the Phillips #00 Screwdriver to remove the 5mm screws.

Step 7



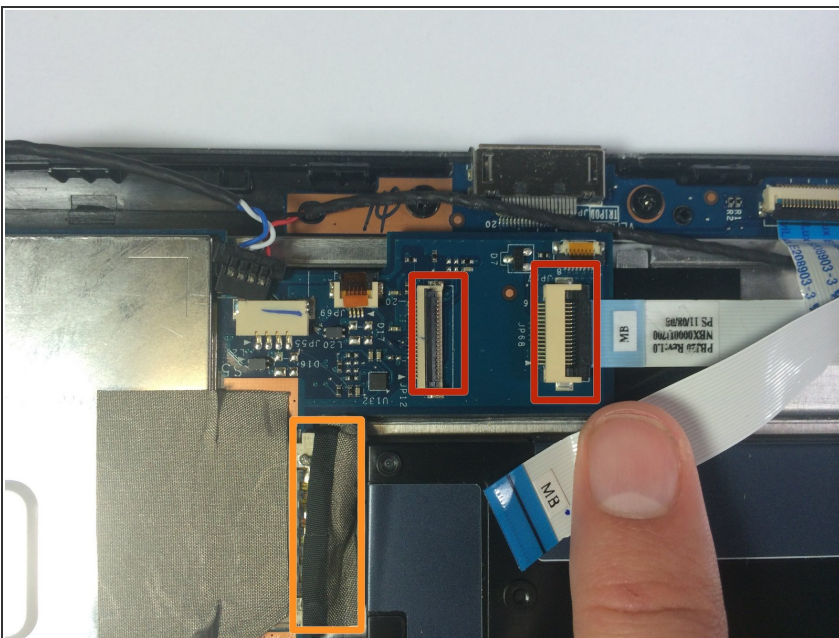
- Use the sharper end of the spudger to disconnect the battery from the mother board.
- The battery connector will slide off.

Step 8 — Power Button



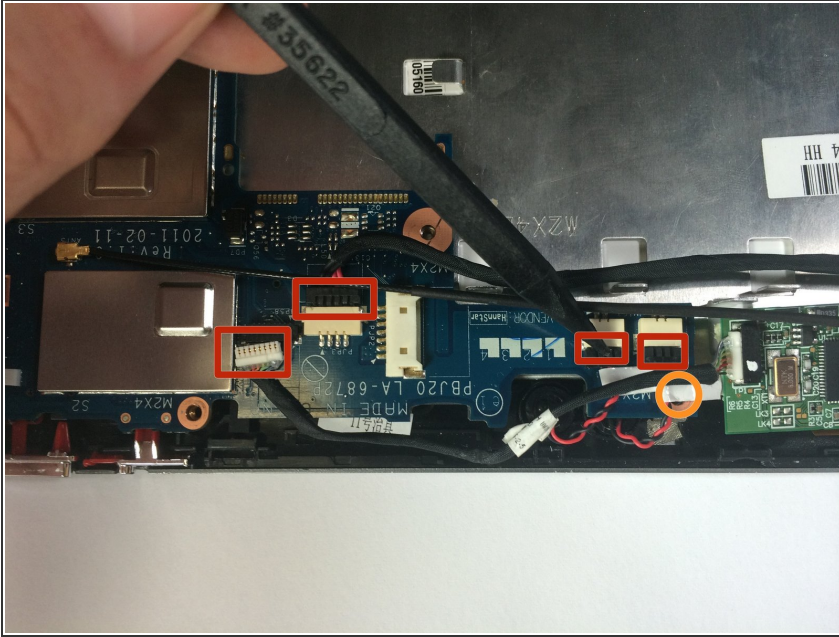
- Using the Phillips #1 screwdriver, remove the screws near the edges of the tablet.
- ⓘ They may be different sizes, the silver are 5mm and the black are 2mm.

Step 9



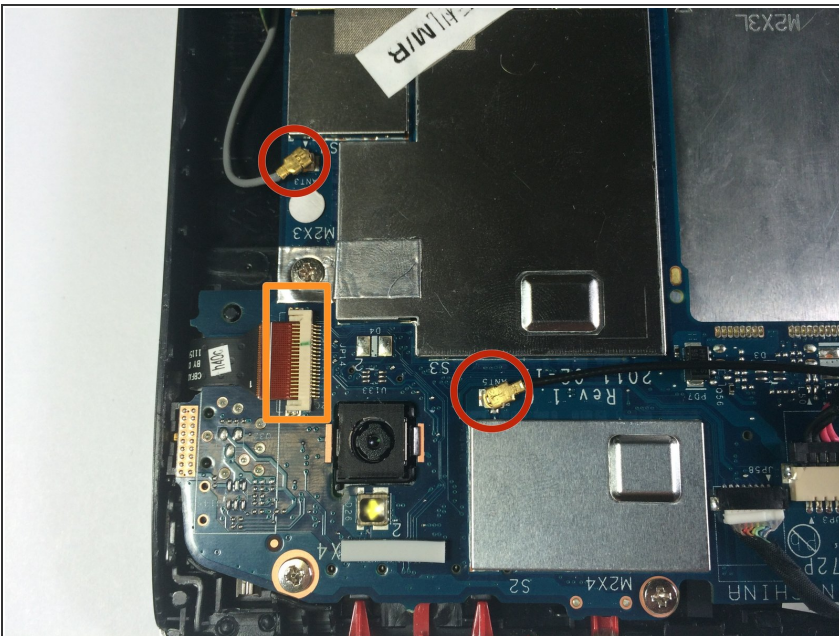
- Lift up on the black flaps to release the flat cables.
- Pull this Connector off.

Step 10



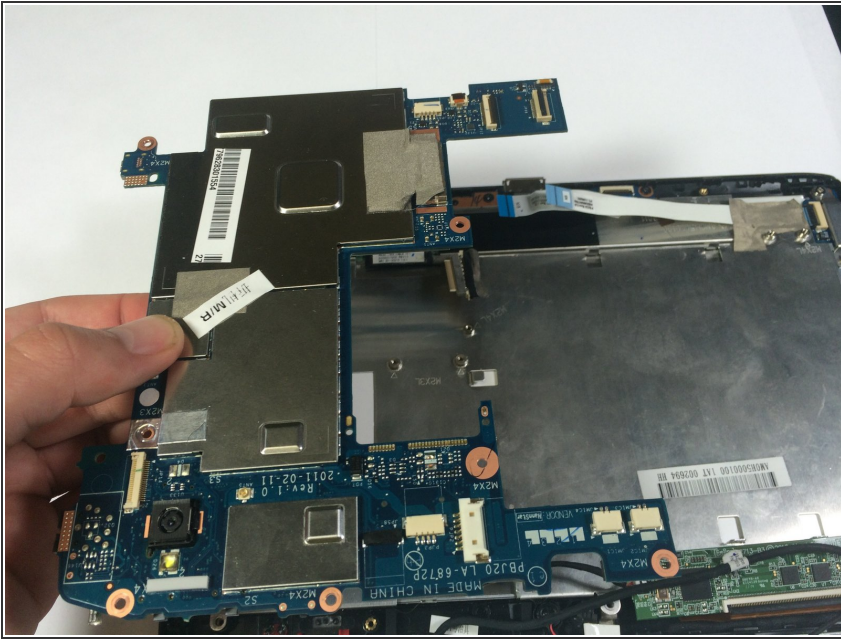
- Use the spudger to detach the indicated cables.
- Remove the last motherboard screw under the rightmost cable. It is a silver 5mm.

Step 11



- Disconnect the two gold connectors by pulling straight up on them with your fingers.
- Like before, lift up on the black flap to detach the cable.

Step 12



- Having disconnected all those pesky cables, the motherboard lifts cleanly out.

From here, you can solder on a new switch or put in the new motherboard. To reassemble your device, follow these instructions in reverse order.