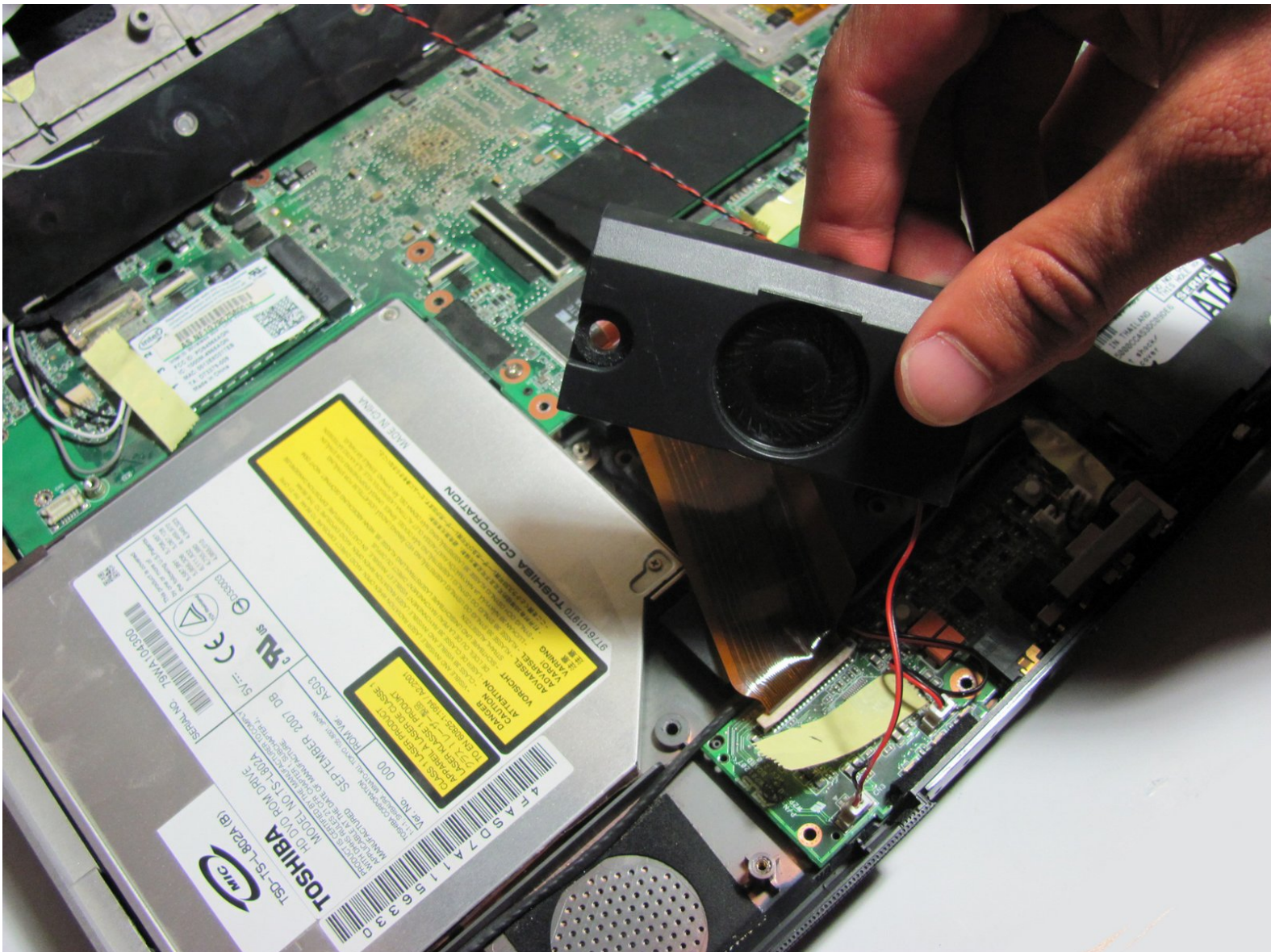




Asus W2W-A1 Speaker Replacement

Replace the speakers on your Asus W2W-A1.

Written By: Nolan Schock





TOOLS:

- [Phillips #0 Screwdriver](#) (1)
 - [Spudger](#) (1)
-

Step 1 — Keyboard



- Remove the battery, then unscrew the 7 3 mm Phillips screws behind the battery. Make sure they go in separate, organized piles.
- Unscrew the 2 4 mm Phillips head screws by the battery.

Step 2



- Remove the panel above the keyboard with a plastic spudger.

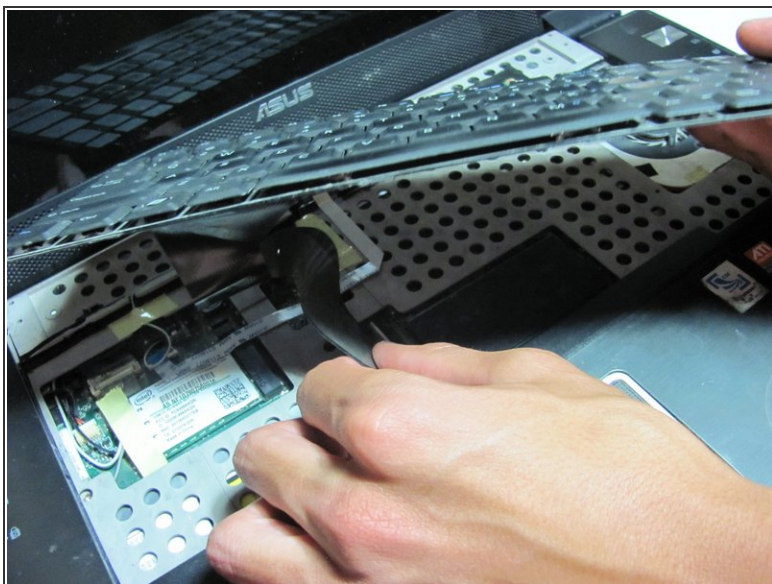
Step 3



- Once the panel is removed, use the spudger to pry out the keyboard.

⚠ Do not fully remove, for the keyboard is still attached to the ribbon cable.

Step 4



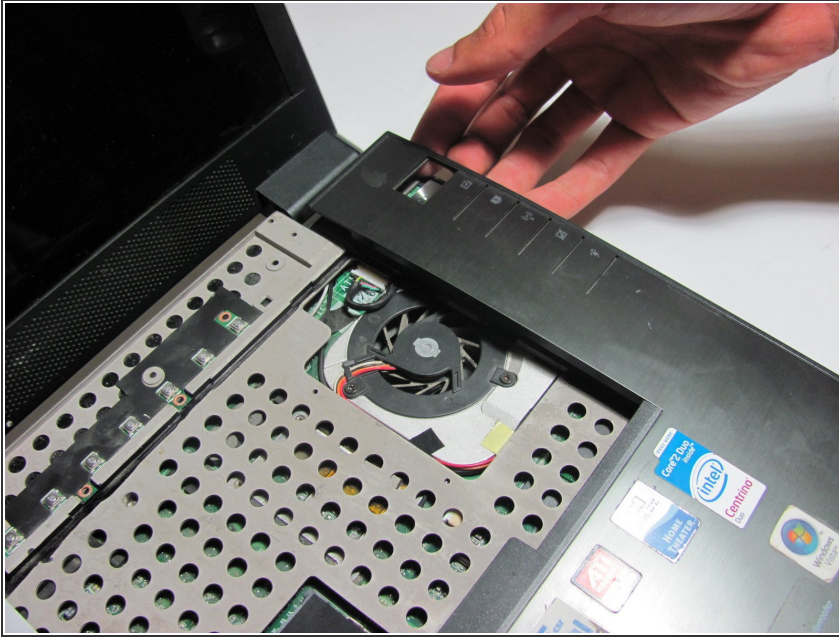
- Detach the ribbon cable from the keyboard by pulling the end of the ribbon cable that is attached inside of the laptop.

⚠ Be sure to detach from the root rather than from near the middle. It should slide out with ease.

- Now you can fully remove the keyboard from the laptop.

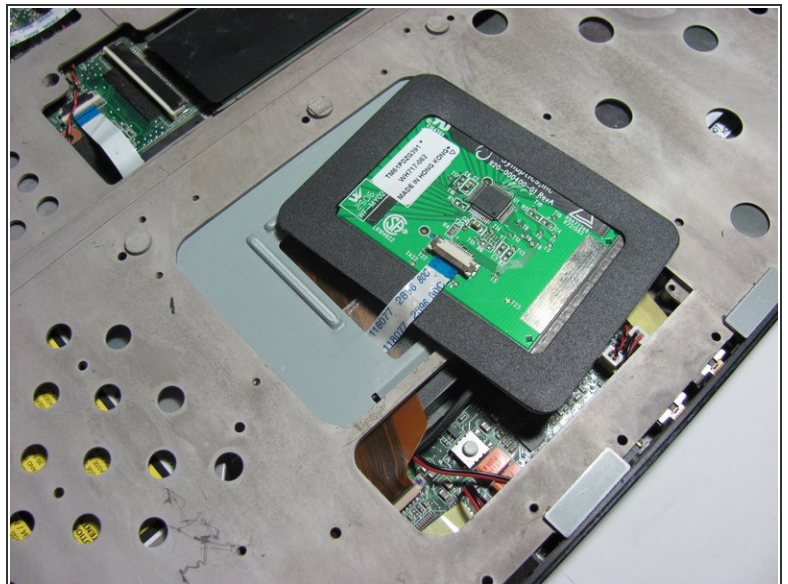
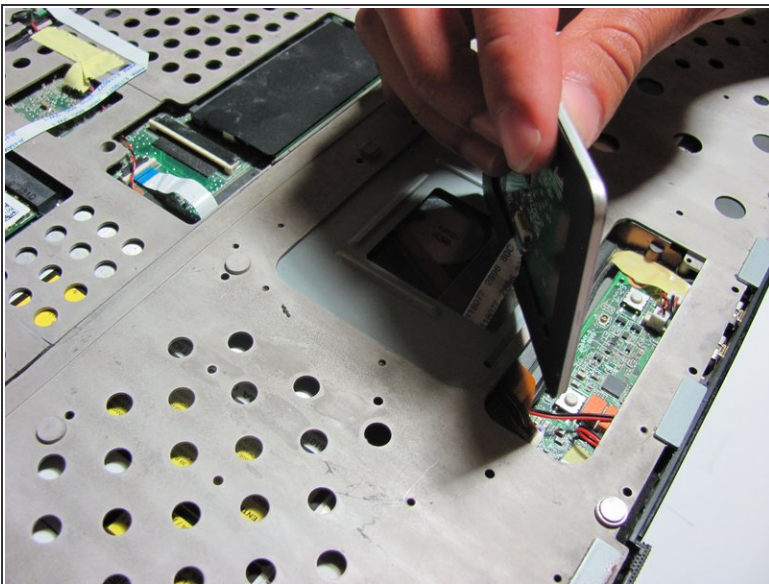
This document was generated on 2020-11-20 09:22:00 PM (MST).

Step 5 — Front Panel



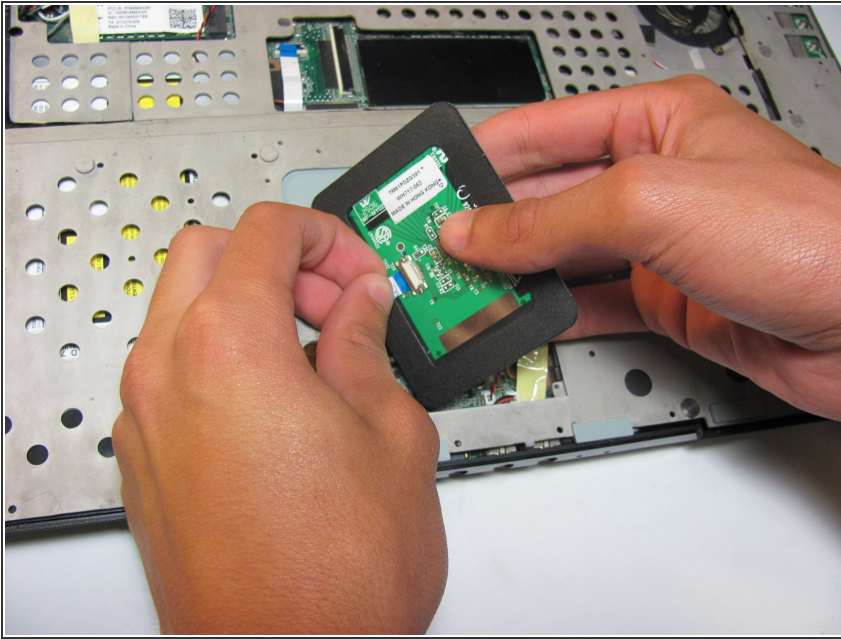
- Place your fingers or a spudger between the front panel and the rest of the laptop.
- Pull upwards gently to detach the side you are grabbing.
- Repeat on the other side until the panel easily peels off the laptop.

Step 6 — Touchpad



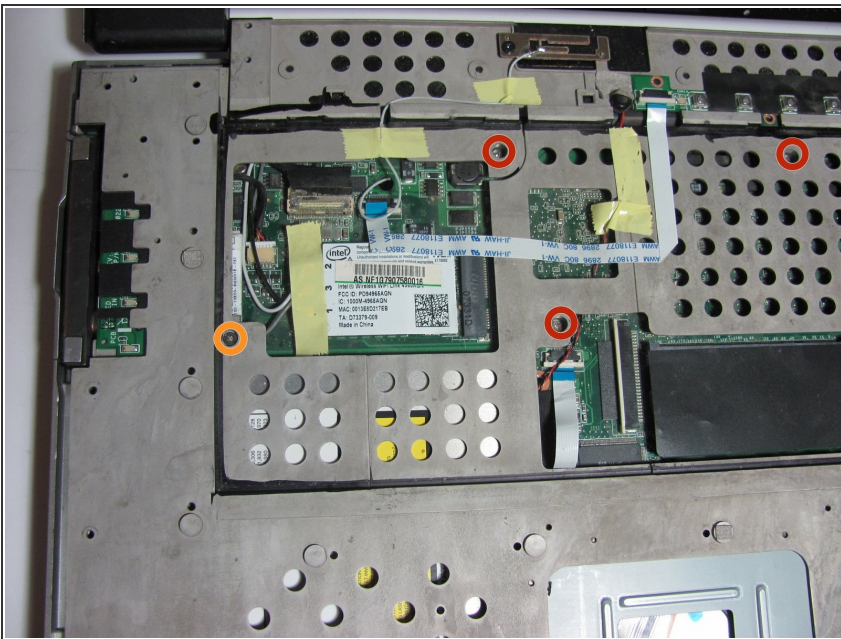
- The touchpad should be loosely attached to the rest of the laptop by a ribbon cable.

Step 7



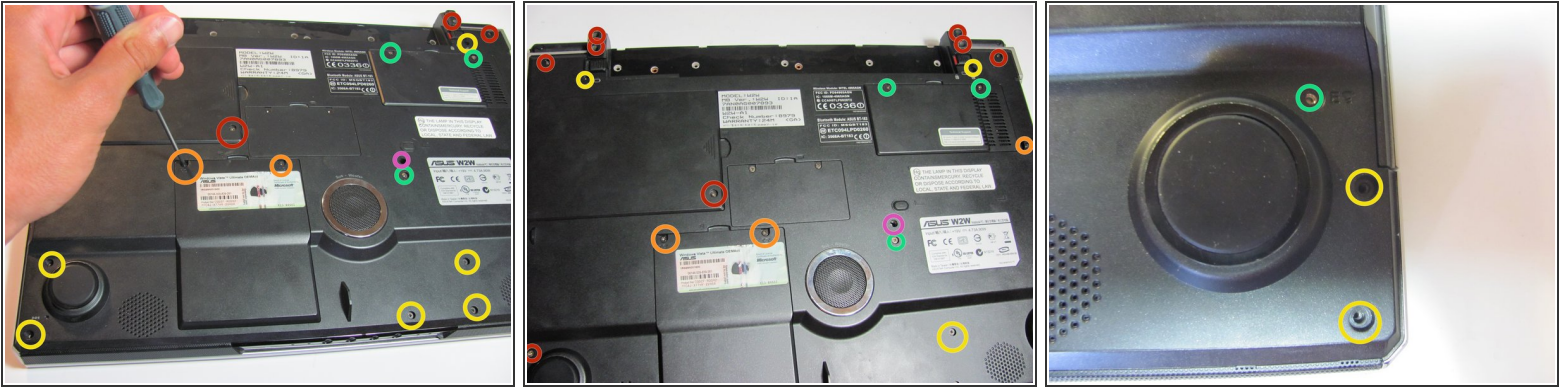
- Gently pull the ribbon cable out of its socket attached to the touchpad.
- You are now able to remove the touchpad.


Step 8 — Protective Cover



- Unscrew the 3 13 mm Phillips screws on the surface of the panel.
- Unscrew the 4 mm Phillips screw beneath the panel.

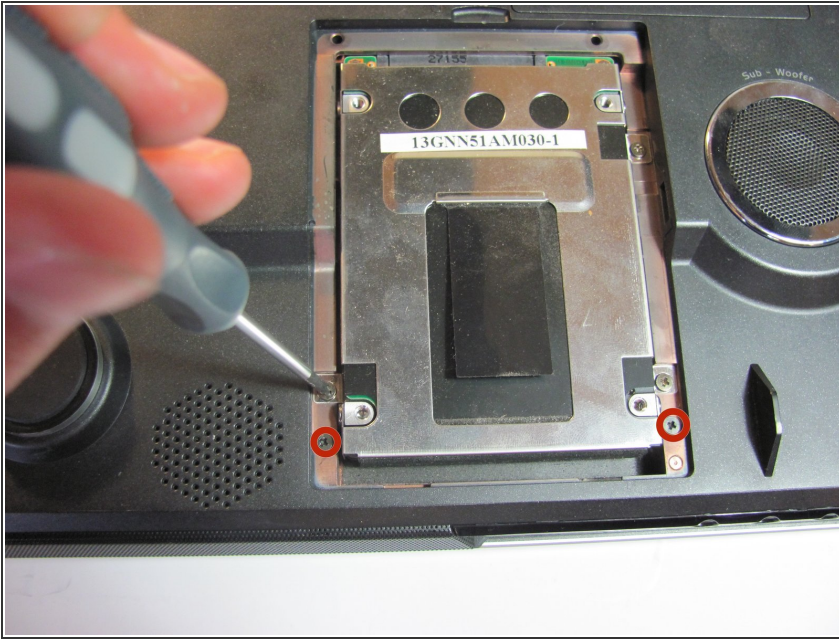
Step 9



 There are many different types of screws in this step so make sure to arrange the screws by their different sizes.

- Unscrew the six 17 mm Phillips head screws on the stands on the back and the 2 "A" screws of the same size adjacent to the stands.
- Unscrew the two C Phillips head screws on the hard drive panel. There is also one more C screw in the upper right corner of the laptop as shown.
- Unscrew the eight 8mm lock phillips screws and the screws along the outside of the laptop.
- Unscrew the three 3mm E Phillips screw and the one 3mm D Phillips screw.
- Unscrew the 5mm Phillips head screw that lies just above the D screw.

Step 10



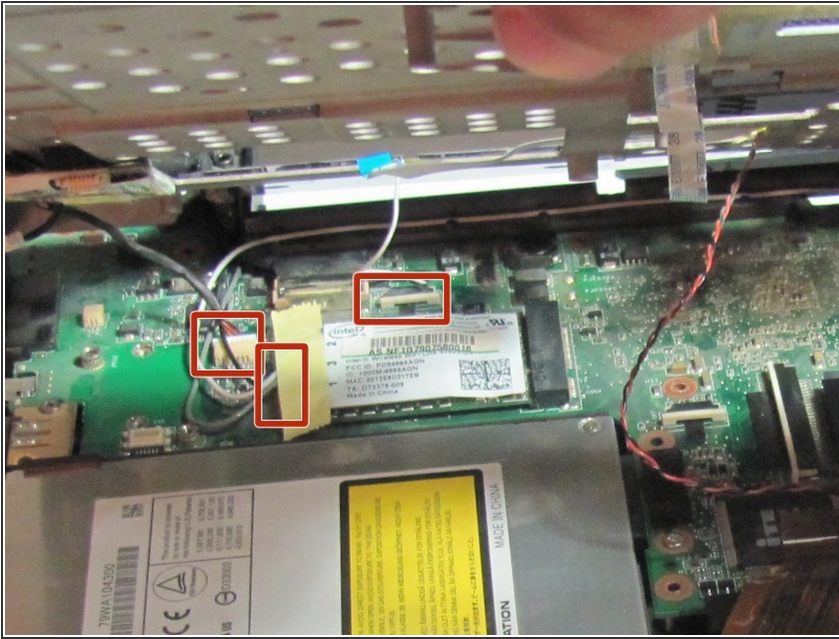
- Unscrew the two 8 mm Phillips screws beneath the hard drive panel.
- ⓘ After finishing this step, flip the laptop over.

Step 11



- Everything should now be loose enough for you to start removing the panel.
- ⚠ Do not fully remove the panel, for there are still ribbons attached on the inside.

Step 12



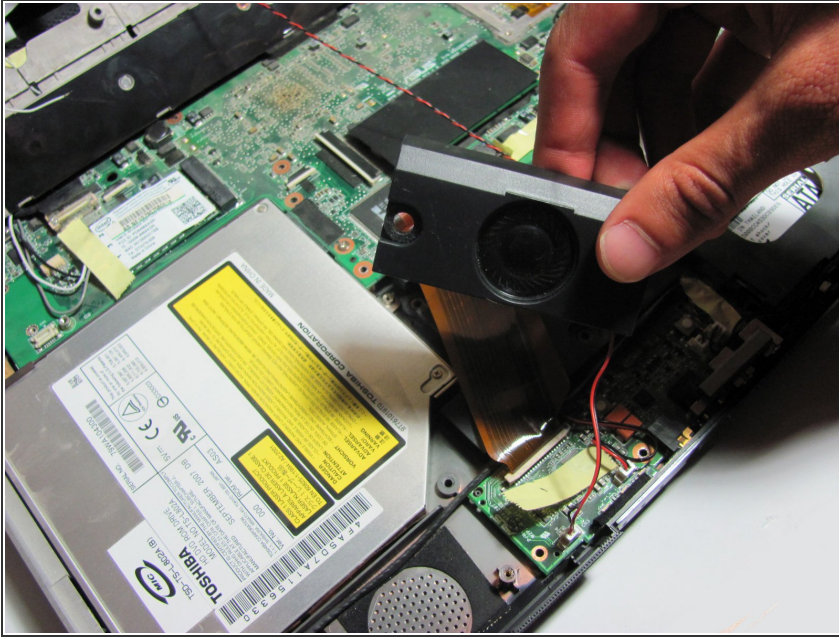
- Carefully remove the ribbons from the base.
- Then you can lift the panel to access the components beneath.

Step 13 — Speaker



- Remove the 2 4 mm, wide Phillips screws per speaker holding in the two speakers at the lower end of the device.

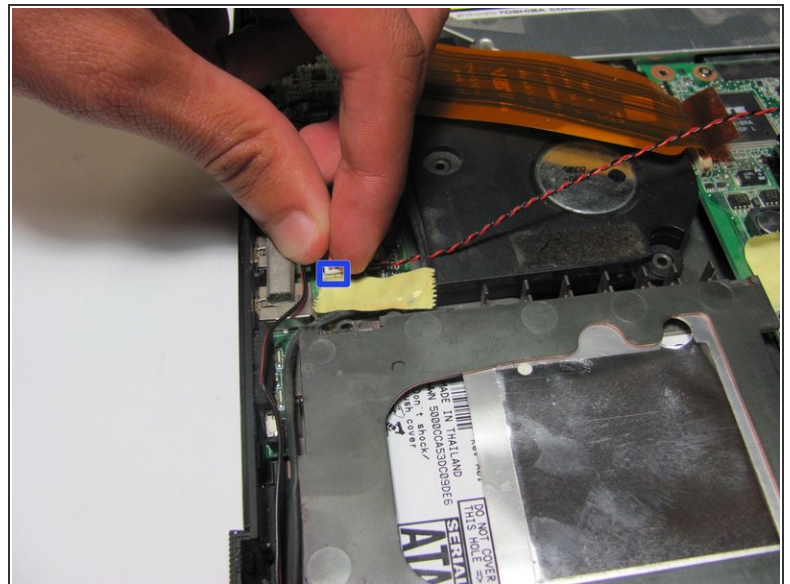
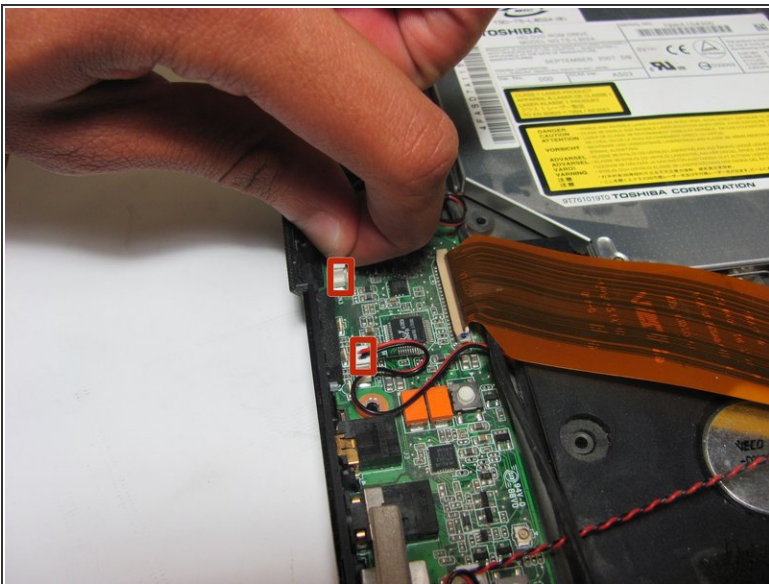
Step 14



- Lift up the speakers to separate from the device.

⚠ The speakers are connected to the device by a cable. Be careful not to rip this off.

Step 15



- Grab the cable by the white connection to the laptop, and gently pull to disconnect.

To reassemble your device, follow these instructions in reverse order.