



# Canon EOS 6D Rear Body Panel Replacement

Replace the rear body paneling of the EOS 6D.

Written By: Justin Thomas



---

## INTRODUCTION

Use this guide to replace the rear body panel of your EOS 6D or to access damaged internal components.

---

### TOOLS:

- [Phillips #00 Screwdriver](#) (1)
  - [Spudger](#) (1)
-

## Step 1 — Rear Body Panel



- Remove the viewfinder cover by pinching the sides and sliding it upward.

## Step 2



- Open the battery door on the bottom of the camera.
- Use your thumb to slide the small black tab on the inside of the battery door up and pull the door off the camera.



### Step 3



- Slide your fingernail or the flat end of the spudger underneath the rubber covering and gently peel it off all sides of the camera.

### Step 4



- Open the covers to the HDMI/AV/MIC ports on the side of the camera by gently pulling outward on the bottom of the covers.
- Rotate the covers to the side so that you can see the connection ports inside.
- Remove the following screws:
  - Two silver 5mm Phillips #00
  - One black 6mm Phillips #00

## Step 5



- Remove the cover to the HDMI/AV/MIC ports by gently lifting the tab on the bottom edge of the camera.

## Step 6



- Rotate your camera so the bottom side is facing you.
- Remove the following screws:
  - One 6mm Phillips #00
  - Two 3mm Phillips #00

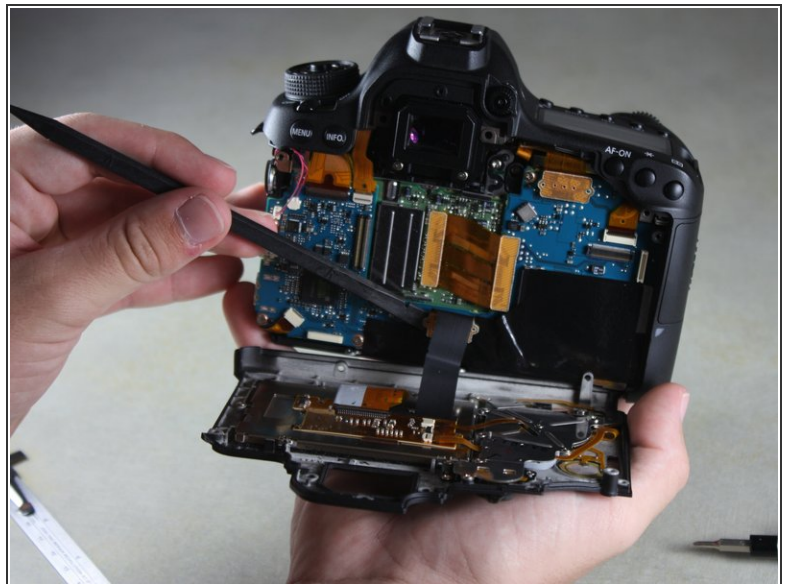



## Step 7



- Rotate your camera so the back is facing you.
- Remove the following screws:
  - Three silver 5mm Phillips #00
  - Two black 6mm Phillips #00
  - One black 4mm Phillips #00

## Step 8



 A black ribbon wire connects the rear panel to the inside of the camera. Breaking this wire would make your rear screen and buttons non-functional.

- Carefully use your fingers to tilt the back panel downward to about a 90 degree angle.
- Use the flat end of the spudger to gently pry off the ribbon wire from the inside of the camera.

This document was generated on 2020-11-21 03:30:54 PM (MST).

To reassemble your device, follow these instructions in reverse order.