



HP 2000 - 2D22DX Wireless Card Replacement

This guide will show the user how to remove the device's wireless chip and install a new one, if necessary.

Written By: Conor Most

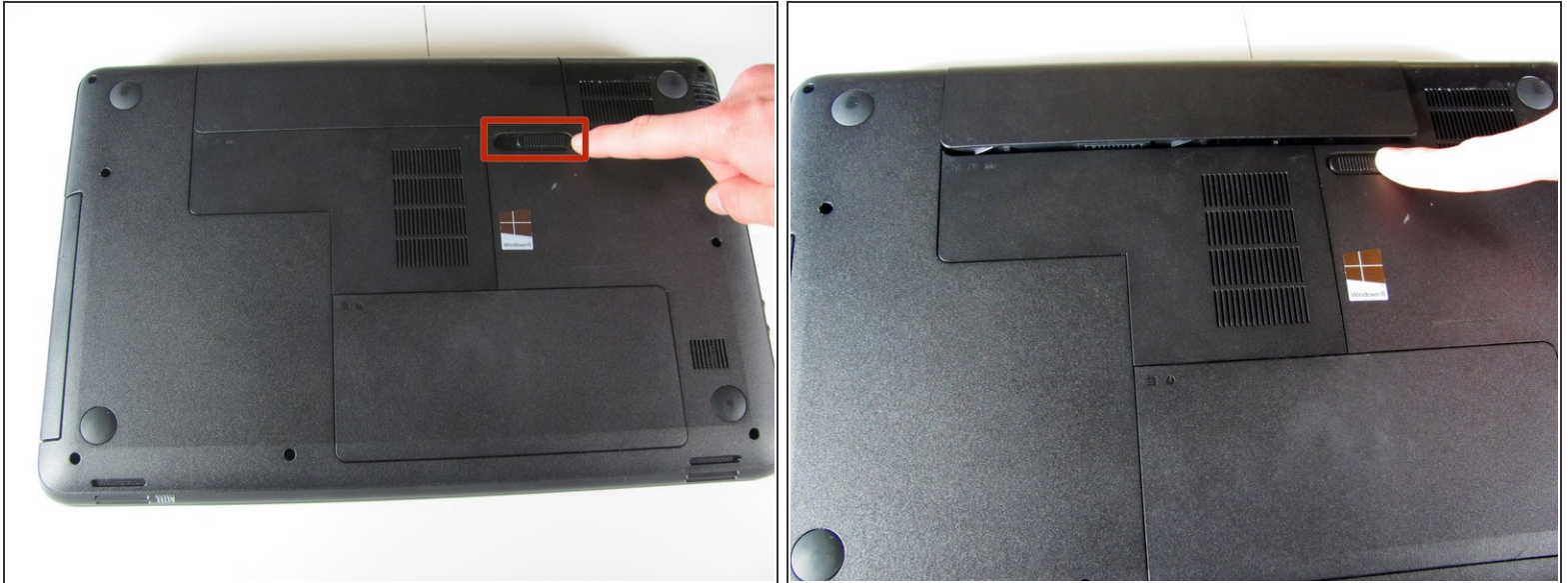




TOOLS:

- [Spudger](#) (1)
 - [Phillips #00 Screwdriver](#) (1)
-

Step 1 — Battery



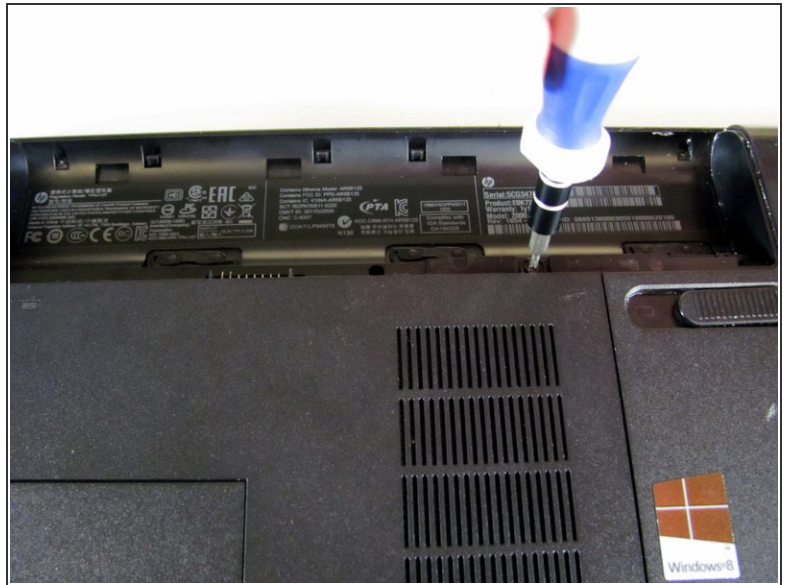
- Flip the device over and locate the battery compartment.
- Slide the battery release latch to the left until the battery is detached from its slot.
- A distinguishable *pop* will be heard when the battery is fully released.

Step 2



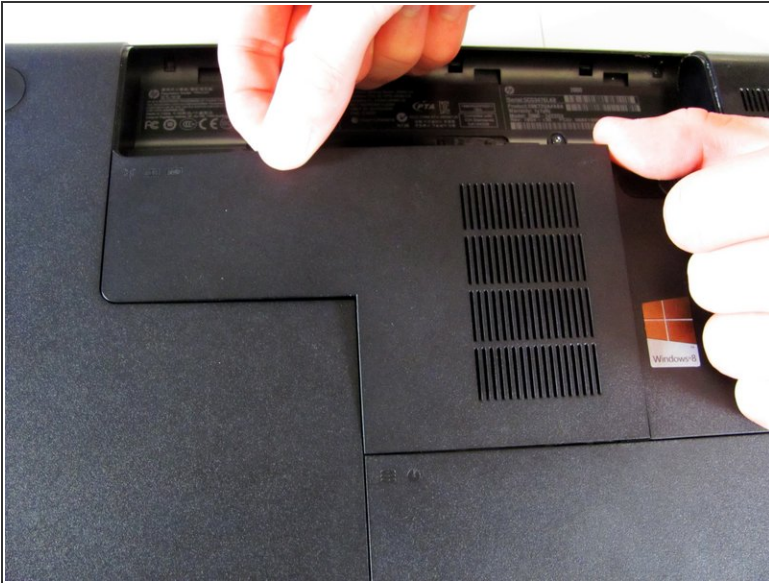
- Slowly pull the battery out of its slot, being careful not to damage any of the connectors in the process.

Step 3 — Wireless Card



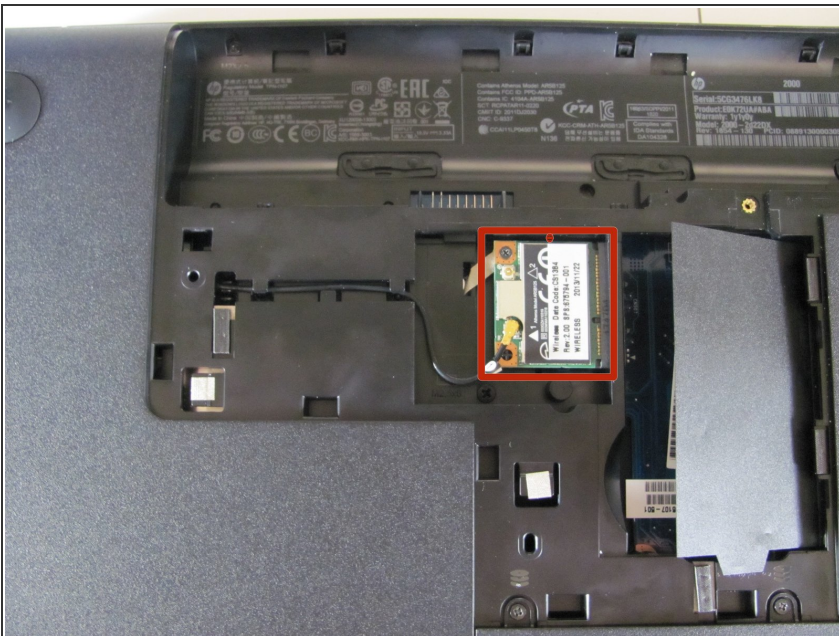
- Locate the RAM compartment cover below the battery compartment.
 - Locate the Phillips head screw securing RAM compartment to plastic chassis.
 - Loosen screw that is securing the RAM compartment with #00 Phillips head screwdriver.
- ⚠ Screw is permanently attached to the RAM compartment cover. Do not try to remove completely.

Step 4



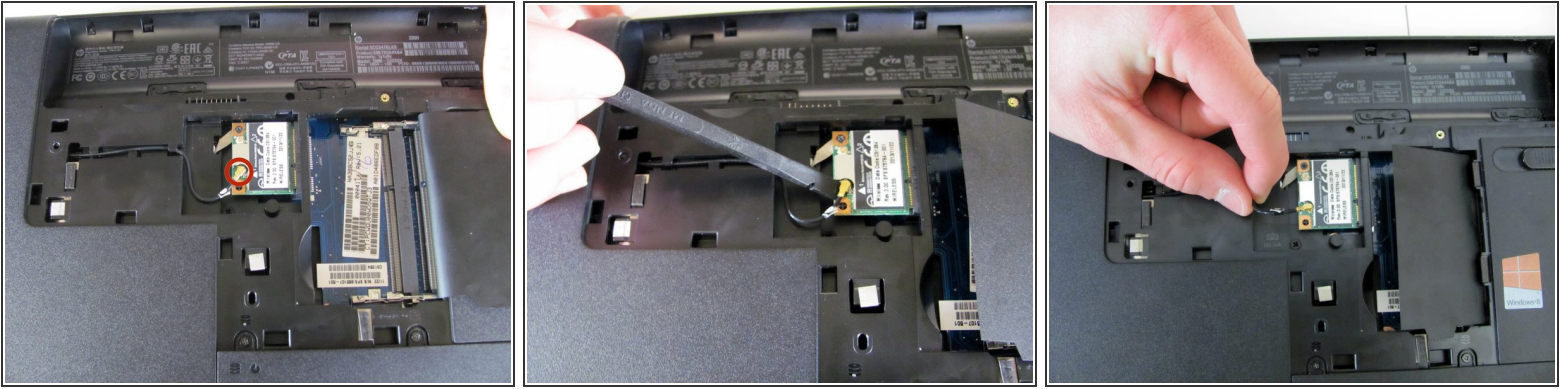
- Once the screw is sufficiently loosened, slowly unclip the RAM compartment cover from its slots in the plastic chassis.
- When unclipped completely, pull the compartment door out and away from the chassis.

Step 5



- Locate the wireless module next to the RAM slots.

Step 6



- Locate the gold connecting wire attached to the wireless module. It is labeled with a small sticker that has a circled number one.
- Using a plastic spudger, disconnect the gold-end of the connecting wire from the wireless module.
- Use a slow, prying motion as if pulling a nail out of wood.

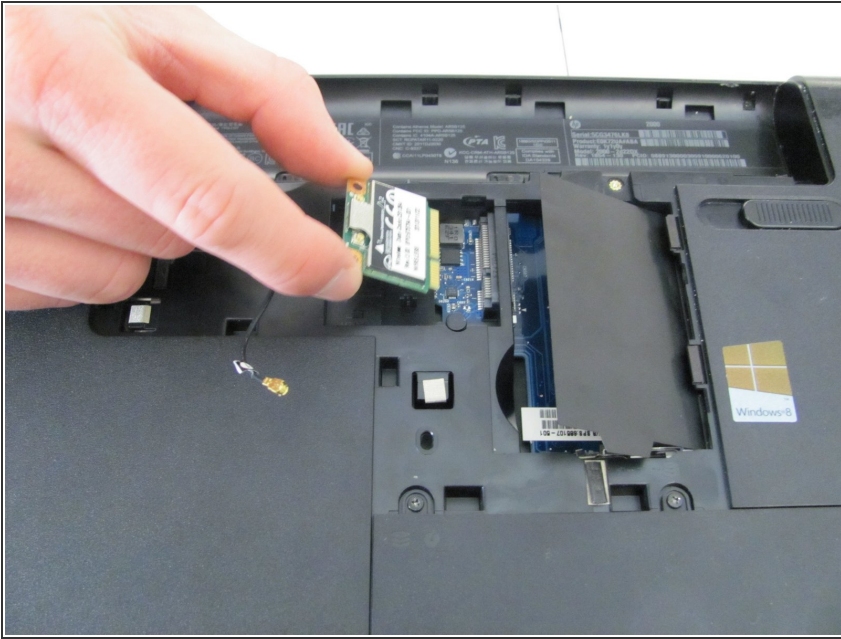
⚠ Be very gentle with the gold wire and its respective port on the wireless module. Both are very fragile and can be easily ruined.

Step 7



- Locate the small Phillips head screw in the top right corner of the wireless module.
- Using a #00 Phillips head screwdriver, remove the screw and set aside.
- The wireless module should now pop up from its slot at a 45 degree angle.

Step 8



- Slowly slide the wireless module straight out from its slot in the logic board.

⚠ Maintain the 45 degree angle of the wireless module until all pins are disconnected. Failure to do so may result in breaking the wireless module connecting pins.

To reassemble your device, follow these instructions in reverse order.