



Toshiba Satellite A215 S4697 Latch Replacement

Written By: Tyler



TOOLS:

iFixit Opening Tool (1)

Tweezers (1)

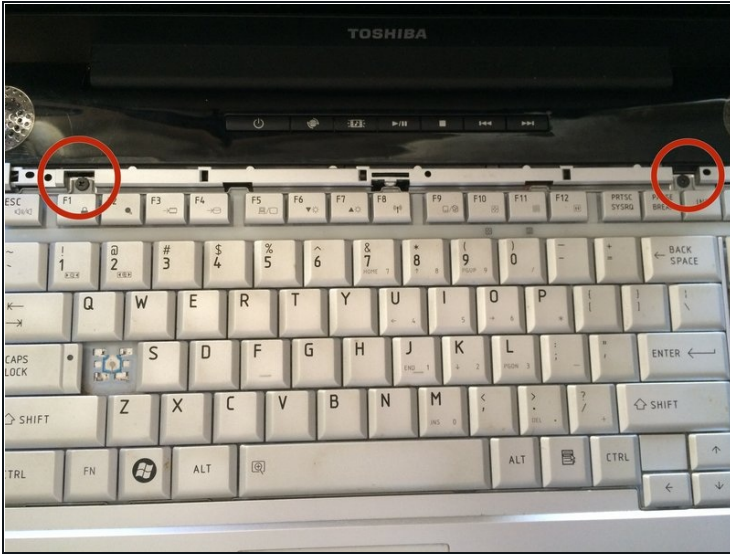
Phillips #0 Screwdriver (1)

Step 1 — Keyboard



- Place laptop right side up on a flat and clean surface. Open the laptop.
- Find the strip just above the keyboard and locate the gaps behind the F1, F8, and Insert keys.
- Remove the strip by sticking your plastic opening tool into these gaps in order, and pulling up.

Step 2



- Locate the two 2.3mm Phillips #1 screws at the top of the keyboard that attaches the keyboard to the frame behind it.
- Remove screws.

Step 3



- Find the latch above the F8 key that overlaps the keyboard.
- ① Use a plastic opening tool to press the key board's tab downward, until the key board is released.

Step 4



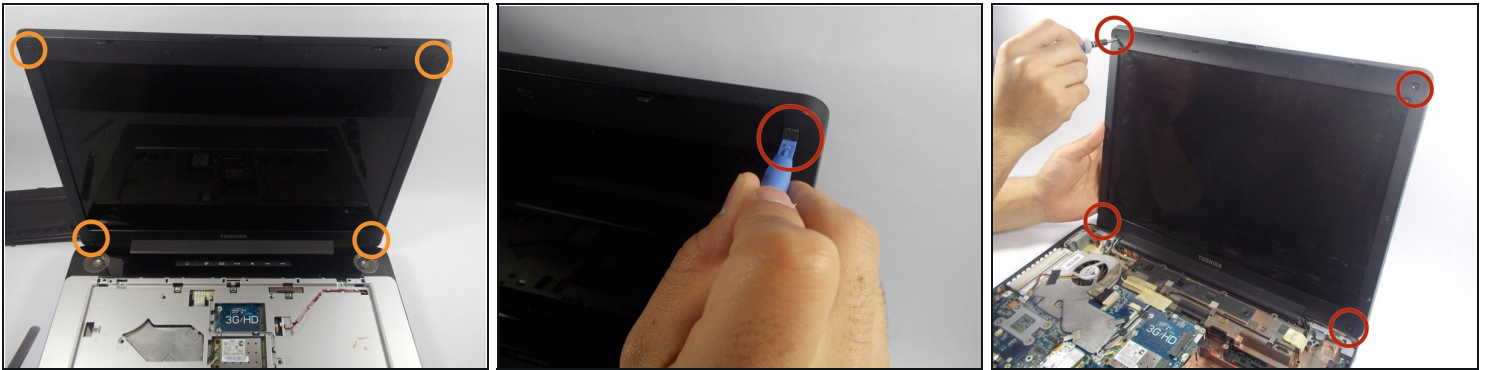
- Pull the keyboard out by shifting it forward towards the screen and pulling up.
- CAUTION: Do not pull it out all the way yet. It is still attached to the laptop by a cable.

Step 5



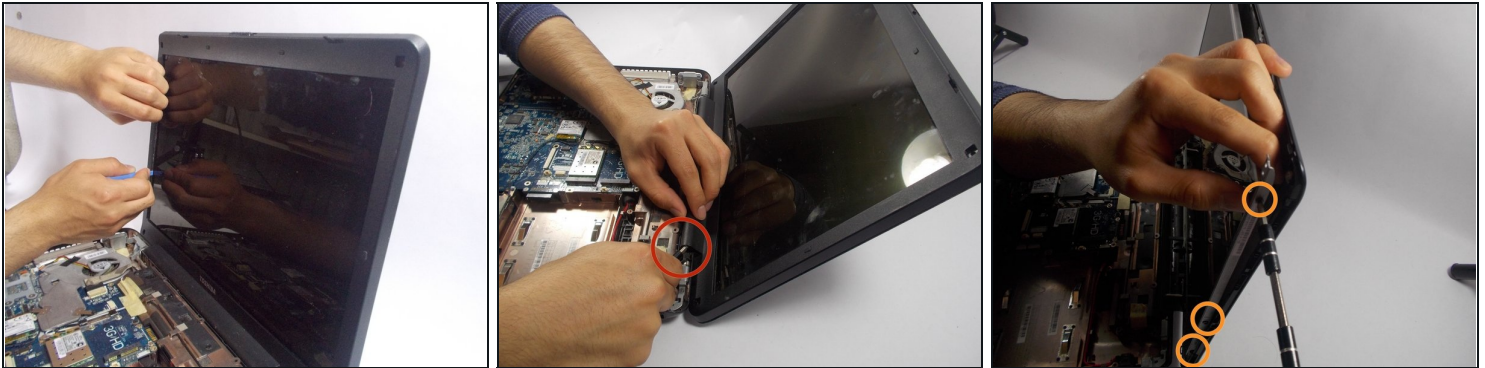
- Find the ribbon cable that connects the keyboard to the laptop. Look for the black tabs on both sides of cable at the laptop end of the cable.
- Using a pair of [tweezers](#), pull the black tabs on both sides of the cable connector towards the screen until the cable can be pulled out easily.
- Pull out the cable and completely remove the keyboard.

Step 6 — 15.4" WXGA TruBrite LCD Screen



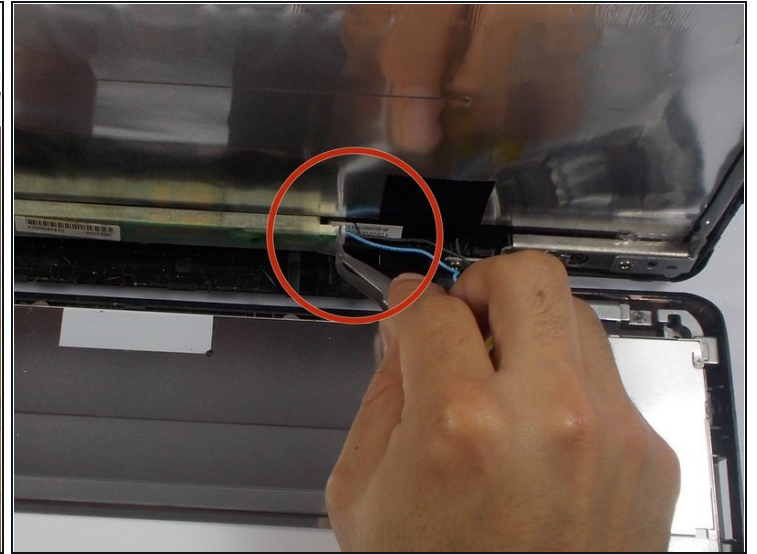
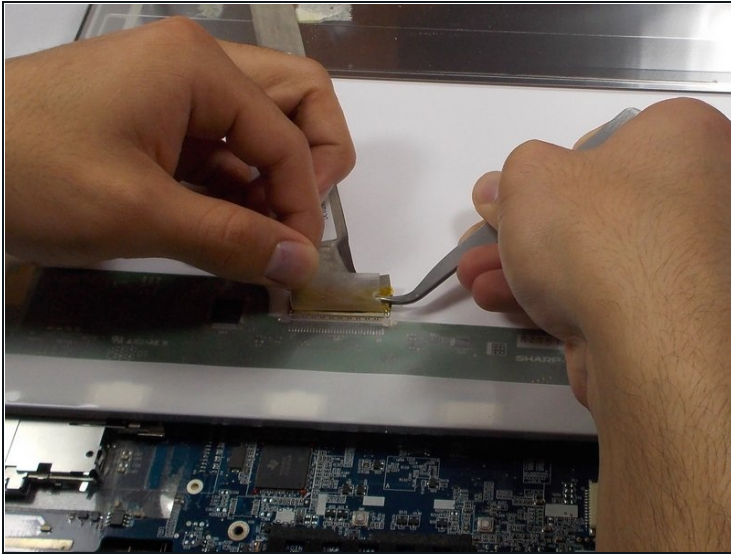
- Begin by carefully removing the rubber bumper pads located at each corner of the plastic screen casing.
- Using a Phillips screwdriver you may unscrew and remove the screws located directly under the the rubber bumper pads. Remember to keep track of the removed screws!

Step 7



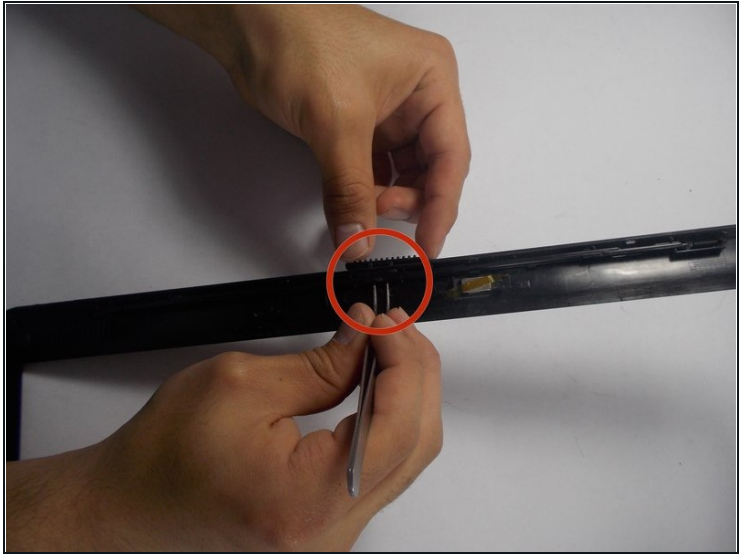
- Once the screws are removed using a plastic opening tool gently pry the plastic screen casing apart.
- Next, carefully pry the screen casing from the monitor's hinge to remove the plastic casing.
- Last, locate the (6) six screws located on either side of the computer screen and remove.

Step 8



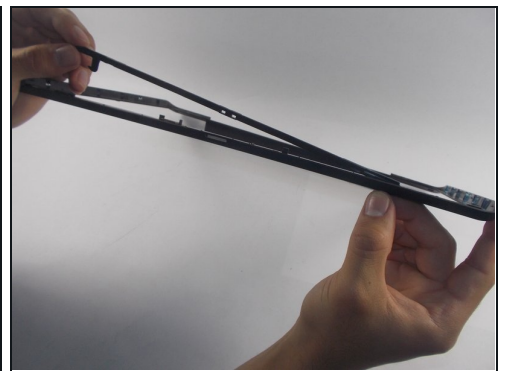
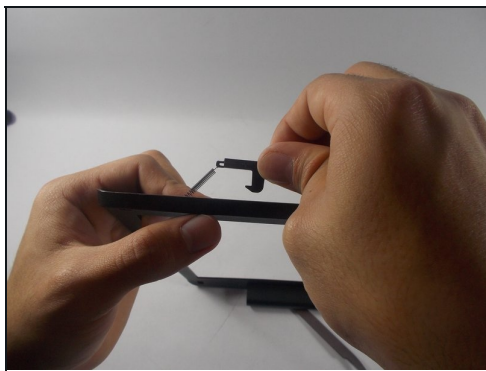
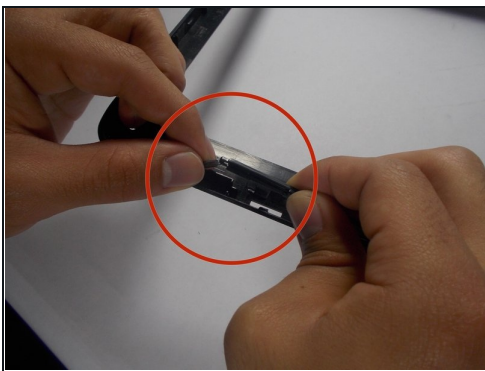
- Gently place screen face down on laptops hardware
- Detach tape that is over the screens connection to the laptop, and detach connection with [tweezers](#) by pulling back
- Disconnect blue wire near the base of the screen with tweezers, by pulling it straight out

Step 9 — Latch



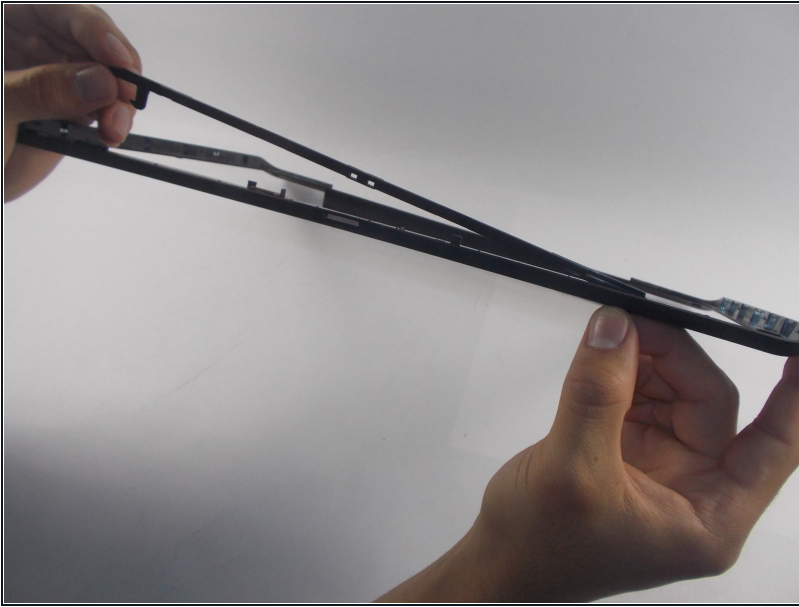
- Refer to Toshiba Satellite screen replacement guide to remove screens outer shell.
- Next remove the latch with a set of [tweezers](#) by gently squeezing the back of the latch to free it from the outer casing.

Step 10



- Locate the spring on the inside edge of the casing. It is located on the top left side of the screen casing and is connected to the latch arm.
- Remove the spring by carefully pulling it off of the latch arm. Be careful not to lose the spring!
- Now you can remove the latch arm by sliding it to the left and popping in out of place.

Step 11



- Then connect the latch hook to the latch arm, and test it to make sure it slides over and back into place.

To reassemble your device, follow these instructions in reverse order.