



Toshiba Satellite M45 Power Button Replacement

How to replace the power button board in the Toshiba Satellite M45 laptop.

Written By: Stephen Bond



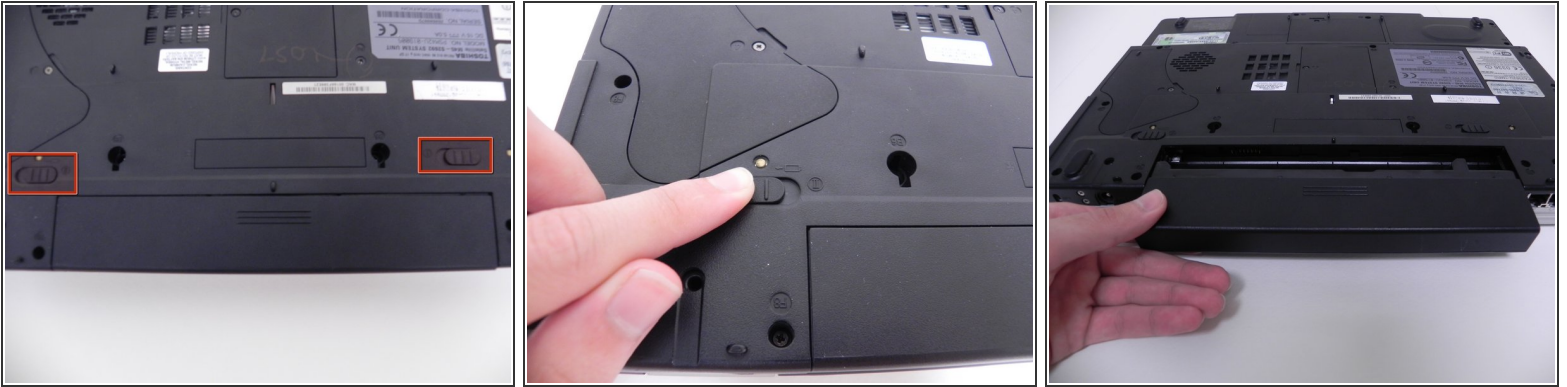
INTRODUCTION

This is a very difficult guide by the average user and it is recommended to double check the power source as well as the power cable.


TOOLS:

- [Phillips #1 Screwdriver](#) (1)
 - [Phillips #00 Screwdriver](#) (1)
 - [iFixit Opening Tools](#) (1)
-

Step 1 — Battery

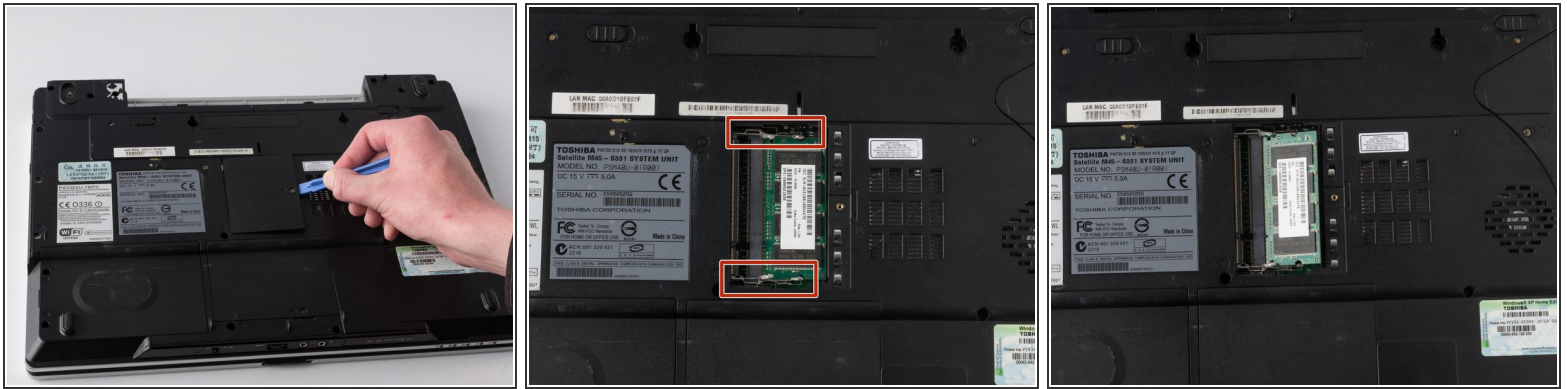


- Turn the computer off and disconnect the power supply from the power supply port in the back of the computer.

 **Caution:** Hazardous situation which, if not avoided, could result in minor or moderate injury. Remove the battery to reduce the chance of electrical shock and to prevent damage to the electrical components.

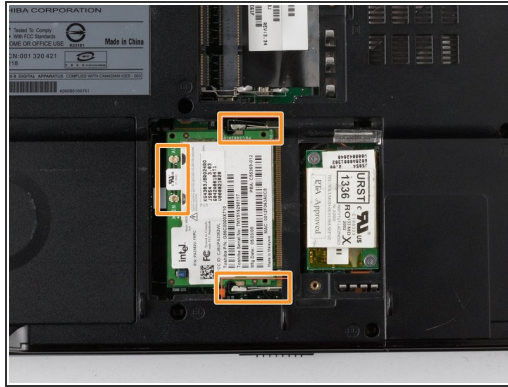
- Slide the two battery locks to disconnect the battery.
- Pull the battery (with casing) horizontally away from the computer to remove it.

Step 2



- Remove the RAM cover panel screws with a #1 Phillips screwdriver.
- Then pry the RAM cover panel off with an opening tool.
- Push the tabs that secure the RAM outward (away from the RAM) using your fingers. The RAM should then pop up.
- Pull the RAM away from the connection to remove. Continue this process until all RAM sticks have been removed from the device.

Step 3



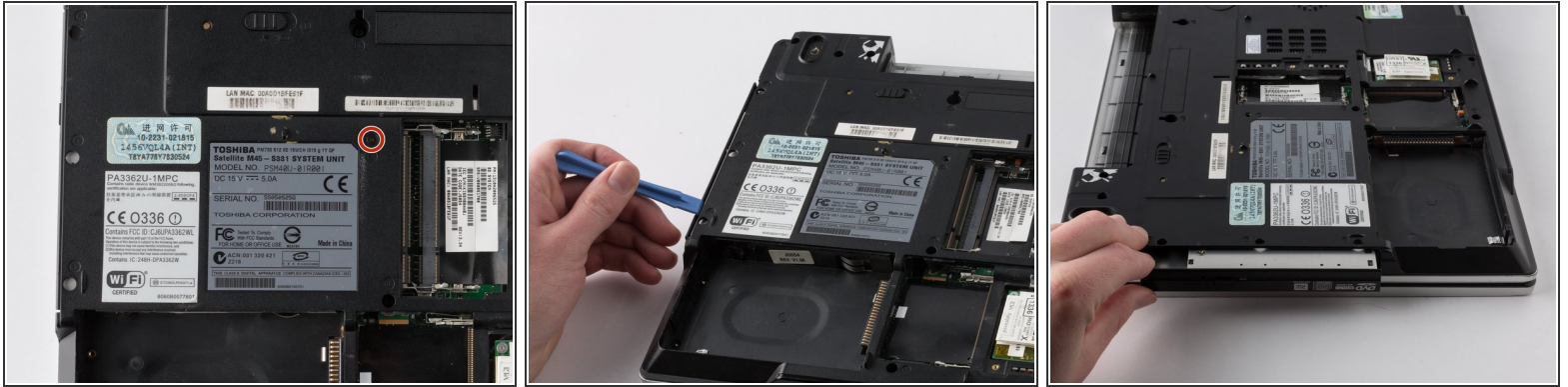
- Remove the Wi-Fi panel screw with a Phillips #1 screwdriver.
- Pry the cover panel off with an opening tool.
- Disconnect the black and white wires. Then push the tabs outward (away from the Wi-Fi card) using your fingers. The card should then pop up.
- Pull the Wi-Fi card out from the device at a slight angle (horizontal with the casing).

Step 4



- Remove the hard drive panel screw with a Phillips #1 screwdriver.
- Use an opening tool to pry the cover off.
- Grasp the plastic flap on the hard drive and lift the hard drive out of its slot.

Step 5



- Remove the ODD screw with a Phillips #1 screwdriver.
- Pry the ODD drive out of its slot from the side of the casing using an opening tool.
- Pull the drive the rest of the way out of the laptop with your hands.

Step 6



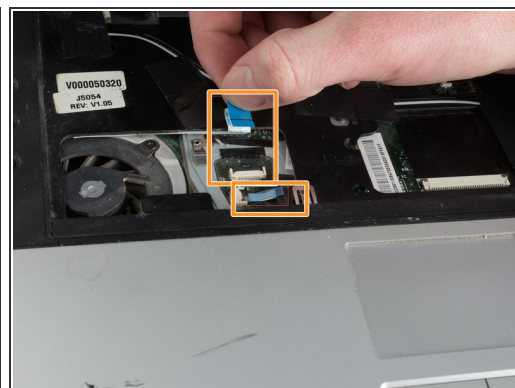
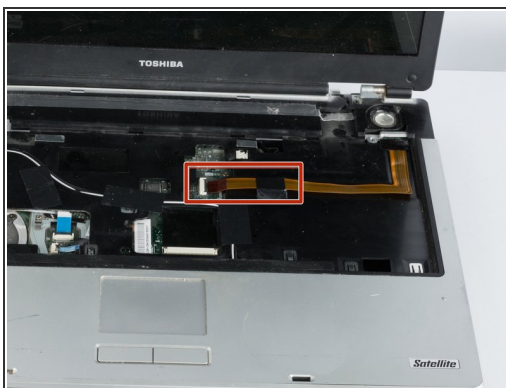
- Pry off the panel above each side of the keyboard using an opening tool.
- Turn the laptop screen so that it is horizontal with the laptop base.
- Remove the clips on the screen hinges that hold the panel. Take off the panel.

Step 7



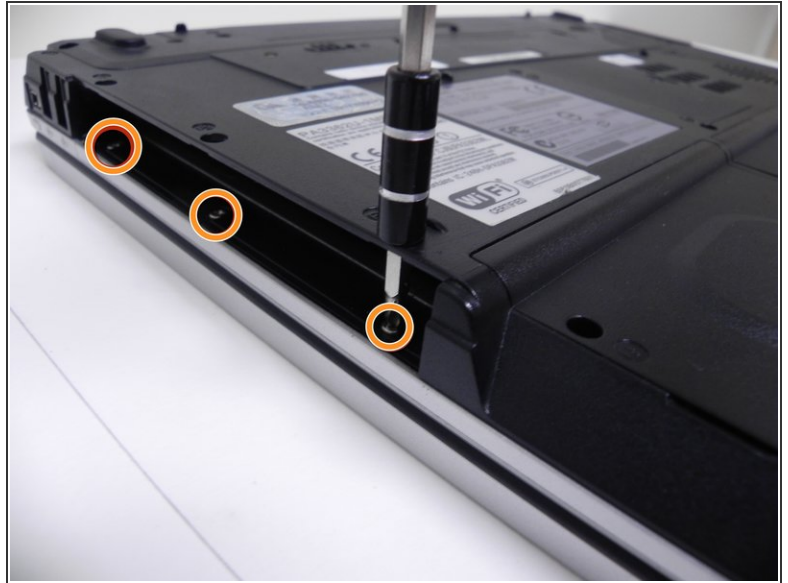
- Remove the two screws on the upper outer edges of the keyboard with a Phillips #1 screwdriver.
- Pry the upper outer edges of the keyboard from the laptop using an opening tool.
- Lift the keyboard away from the laptop and remove the ribbon that connects the keyboard to the laptop base.

Step 8



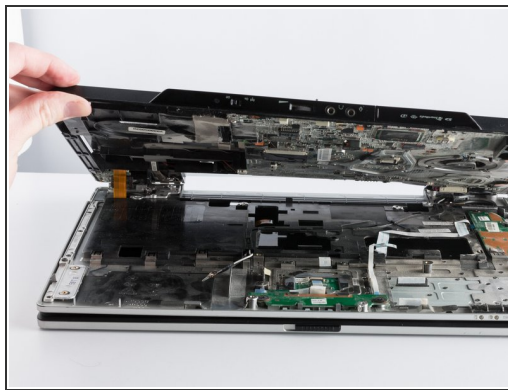
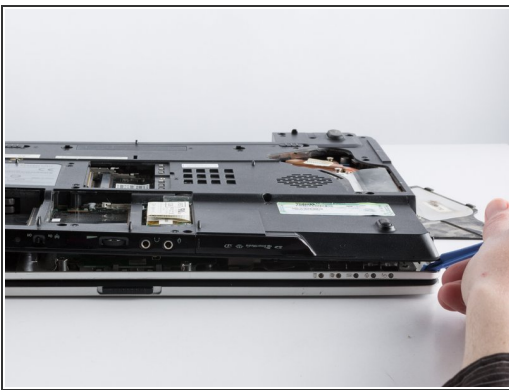
- Pull the video cable near the left speaker upwards to disconnect the cable.
- Pull the brown ribbon away from the connector located in the middle of the laptop base.
- Pull the two other white ribbons away from the connector located near the top right half of the laptop base.

Step 9



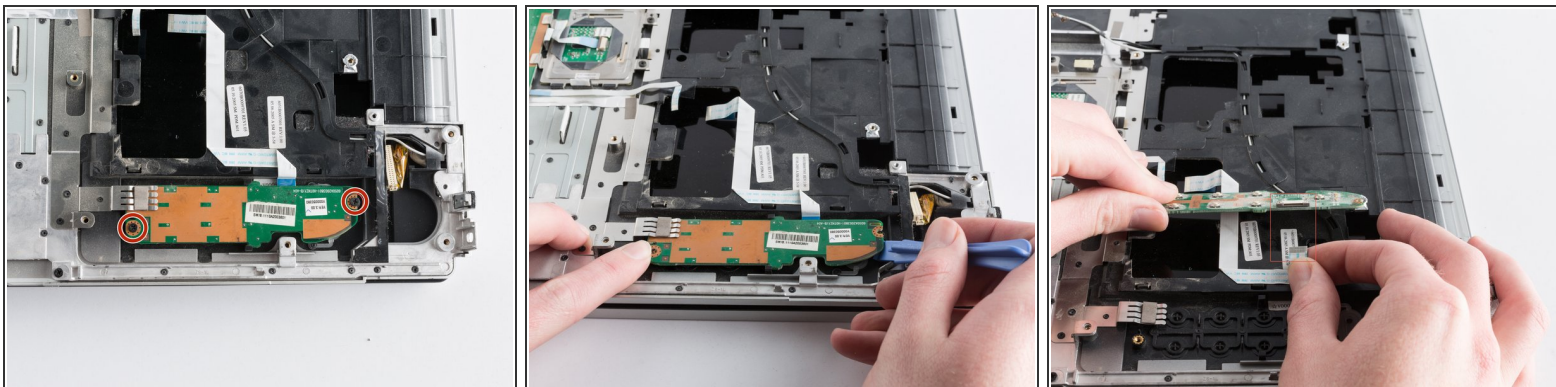
- Remove all the screws using a micro-screwdriver.
- Remove the three additional screws located in the optical drive.

Step 10



- Pry the case upward using an opening tool to remove the case from the laptop base.
- ⚠ Potential for device damage: Pull the case up slowly to avoid damaging the white ribbon.
- Disconnect the large white ribbon, and let the ribbon slide through the top half of the case as you lift the case away from the laptop base.

Step 11



- Remove the two screws located above the power button board using a Phillips #1 screwdriver.
- Move the board slowly out of its slot using an opening tool and your index finger.
- Pull the white ribbon upwards to disconnect the ribbon from the power button board.

To reassemble your device, follow these instructions in reverse order.