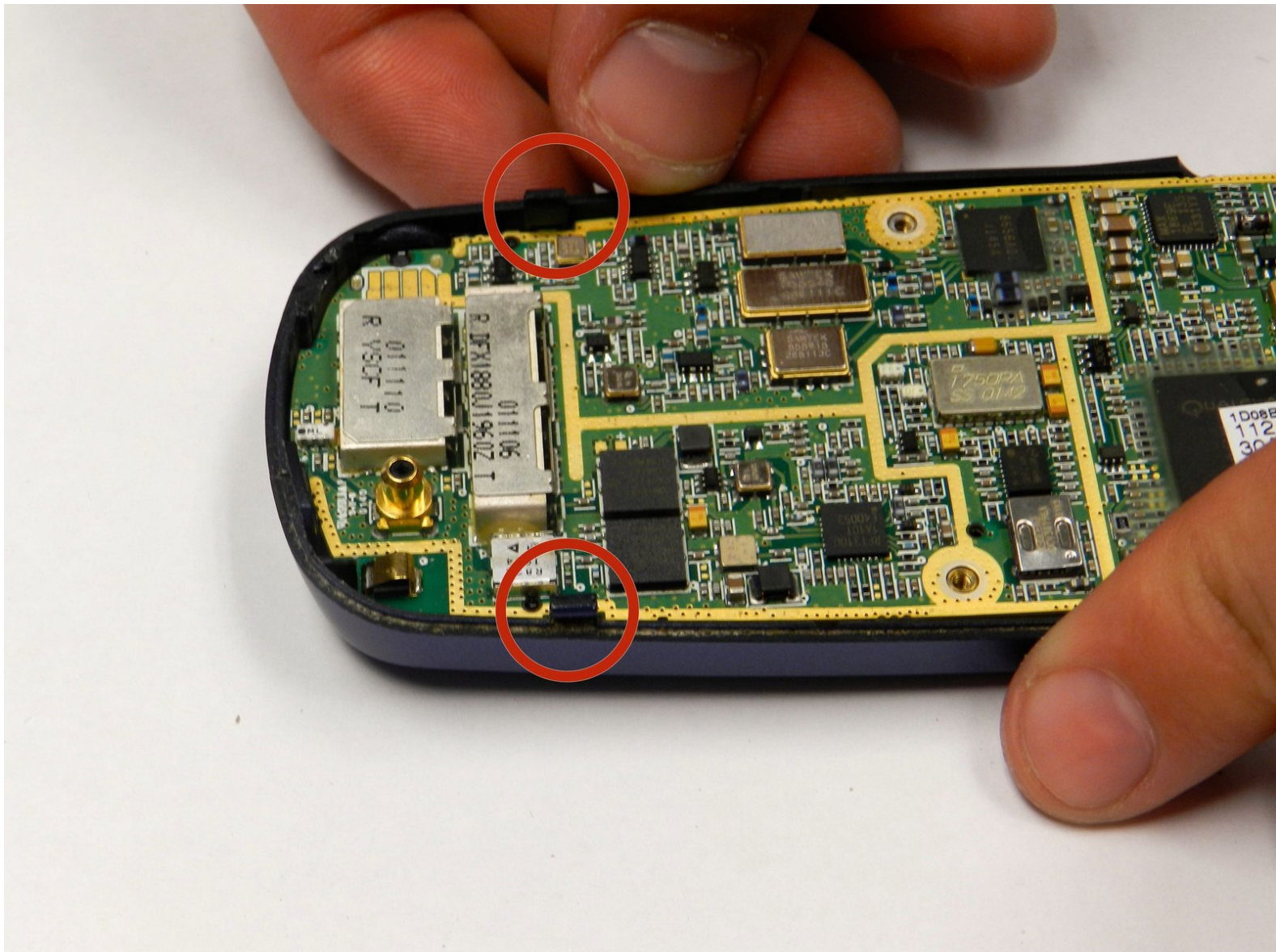




# Samsung Portable Dualband Tri-Mode Motherboard Replacement

Use this repair guide to replace the motherboard on a Samsung Portable Dualband Tri-Mode.

Written By: Barbara



## INTRODUCTION

Many problems with the functionality of the phone may arise that are beyond a simple battery change, in which case means that the motherboard of the phone may have been compromised. If the screen or the keypad buttons do not work, it is possible that changing the motherboard will directly solve the problem. This guide shows how to access and replace the motherboard of the phone.



### TOOLS:

- [Tweezers](#) (1)
  - [T6 Torx Screwdriver](#) (1)
-

## Step 1 — Battery



- Slide the battery out from the battery compartment on the back of the phone.

## Step 2 — Antenna



- Unscrew the antenna top.

### Step 3



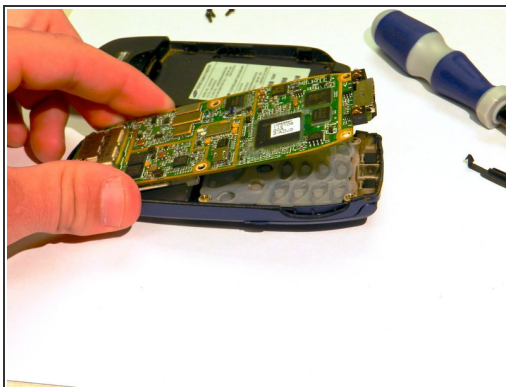
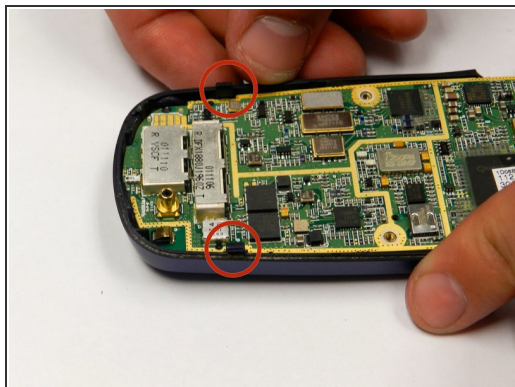
- Clasp the antenna with tweezers and push toward the top.
- Remove the antenna.

### Step 4 — Backplate



- Remove the four screws (3 mm) from the battery compartment.
- Press the release buttons located on the side of the phone while gently prying the back plate off.

## Step 5 — Motherboard



- Press the release tabs on the sides of the back casing.
- Gently pry the motherboard loose and remove it.

To reassemble your device, follow these instructions in reverse order.