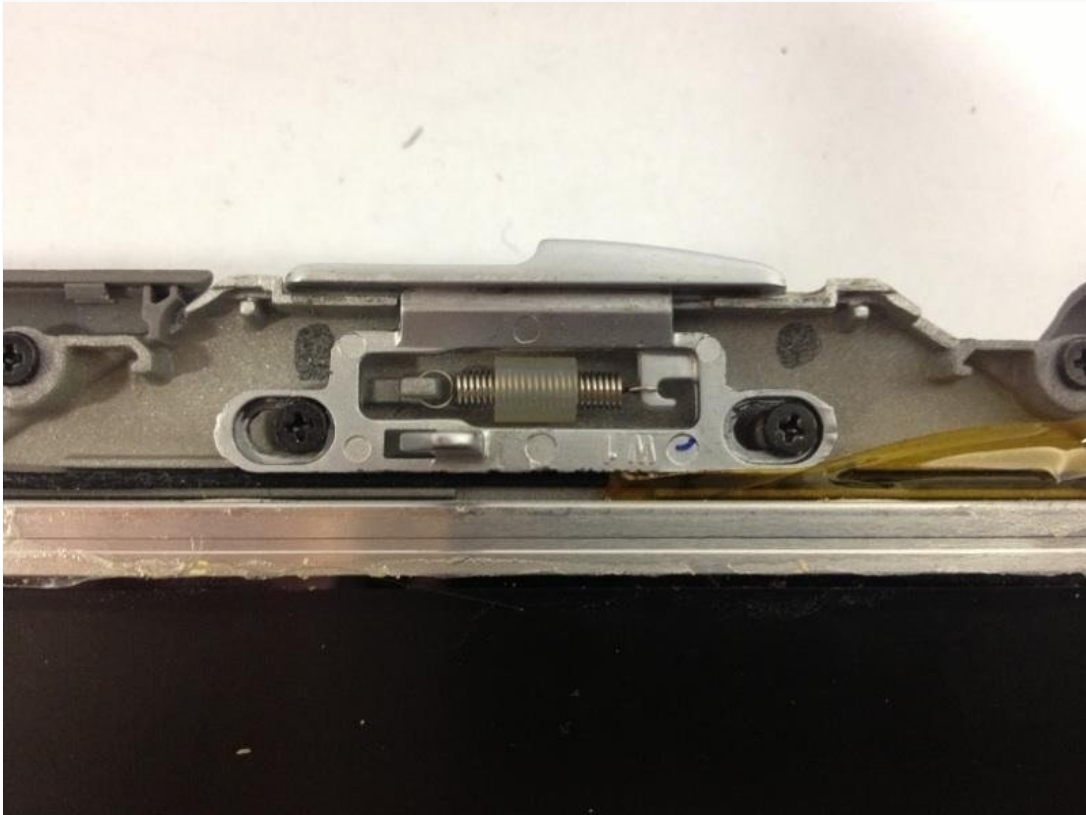




# Dell Latitude X300 Latch Replacement

This is a step-by-step guide on how to replace...

Written By: Jacob



# INTRODUCTION

This is a step-by-step guide on how to replace the Latch on the Dell Latitude X300 laptop. You will need a Philips screwdriver and a replacement latch to complete this repair. This repair will be needed if the latch used to open the laptop is broken, such as:

- Preventing the device from closing fully
- Not effectively keeping the device closed
- The latch gets stuck often.
- Laptop is locked shut.

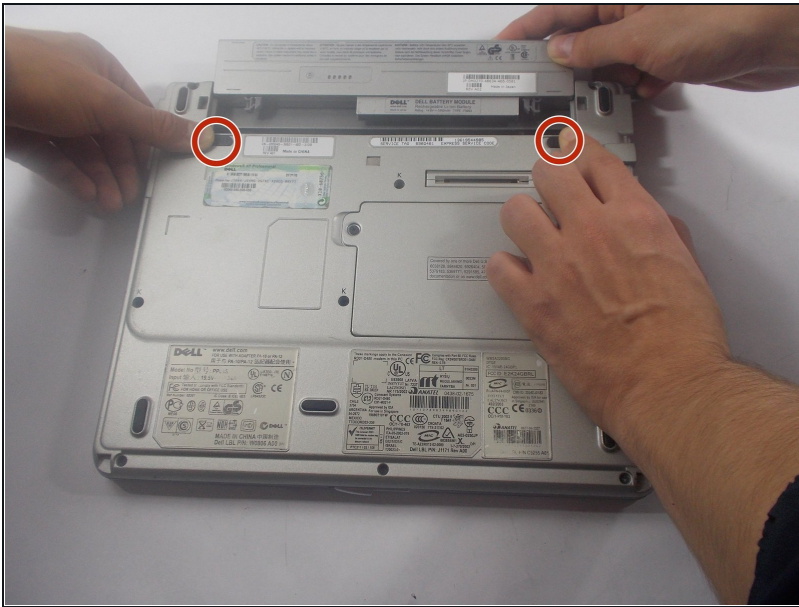
---

## TOOLS:

Phillips #0 Screwdriver (1)

---

## Step 1 — Latch



 Make sure the power is off.

- Remove the battery located on the bottom of the device by pushing in both clips.

## Step 2



- Remove rubber caps on each corner of the front screen with a pinch.
- Remove the 4 mm screws located on the front screen of the laptop.

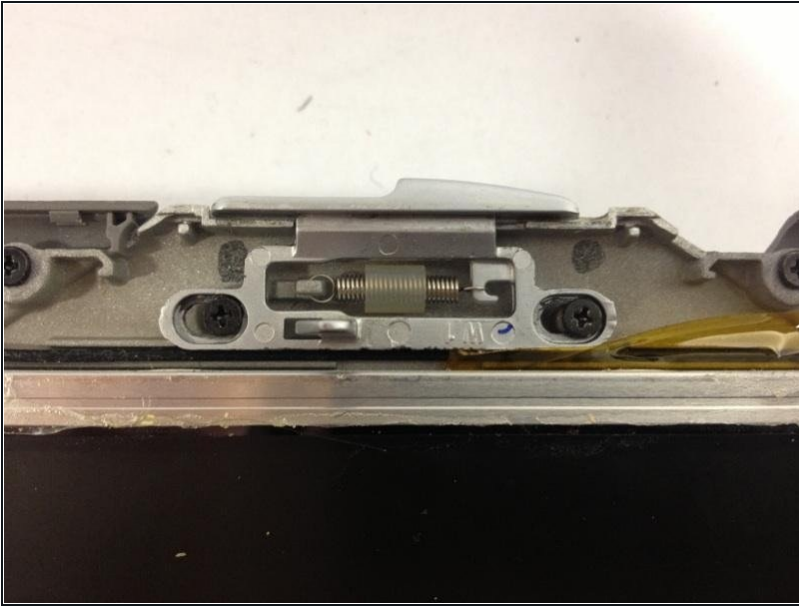
## Step 3



- Carefully, remove the screen casing using either your hands or a proper tool.

⚠ The casing is very flimsy, so use extreme care.

## Step 4



- Remove the screws holding the latch in place.
- Replace the old latch with the new one

---

To reassemble your device, follow these instructions in reverse order.