



HP Media Center 876x Optical Drive Replacement

The optical drive (also known the CD drive) is...

Written By: Balakrishnan Pillai



INTRODUCTION

The optical drive (also known the CD drive) is one of the most frequently used parts of the HP Media Center 876x. As a result, damages are common and often replacement is necessary.

TOOLS:

Phillips #1 Screwdriver (1)

Phillips #0 Screwdriver (1)

Step 1 — Side Panel



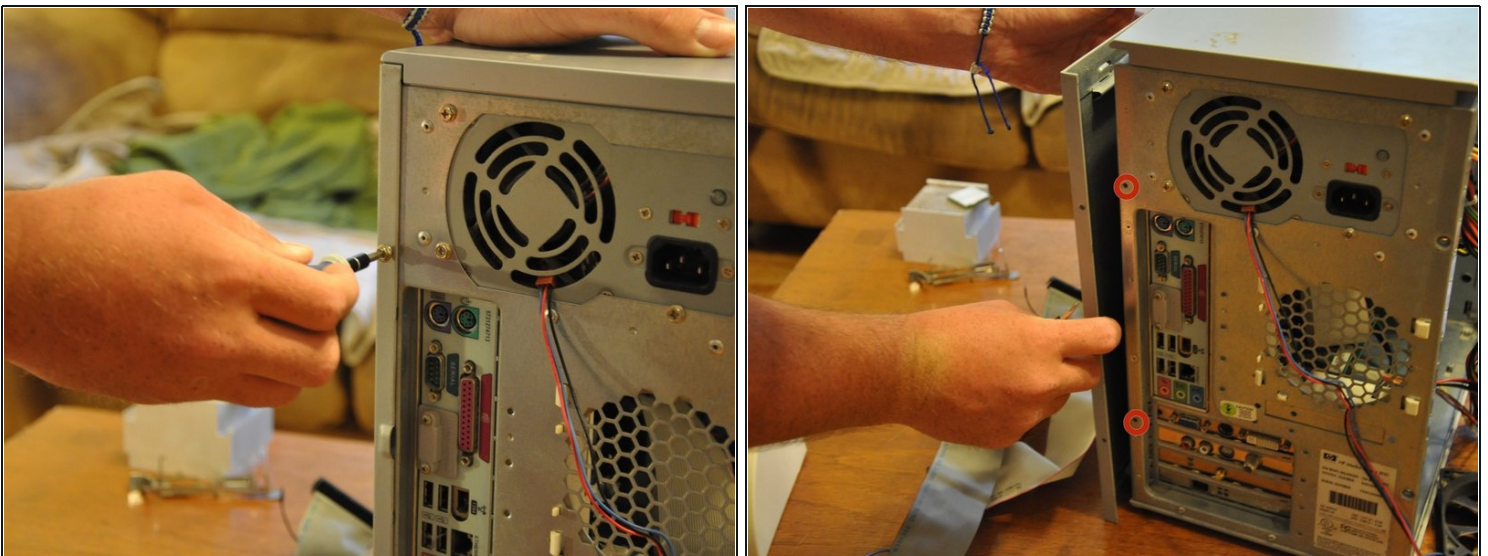
- Remove the two (9 mm) hand screws on the back panel.

Step 2



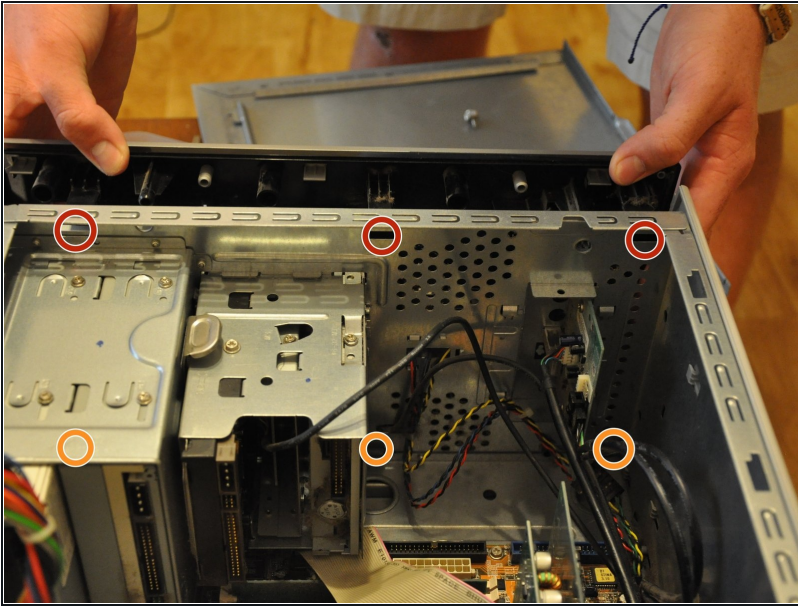
- Place the tower on its side.
- Slide the side panel horizontally to detach, and pull upward to remove.

Step 3 — Front Cover



- Orient the tower vertically.
- Using the #0 Phillips head screwdriver, unscrew and remove the two (5 mm) screws that fasten the remaining side panel to the tower.
- Slide the side panel out of its notches, and pull it gently off of the tower.

Step 4



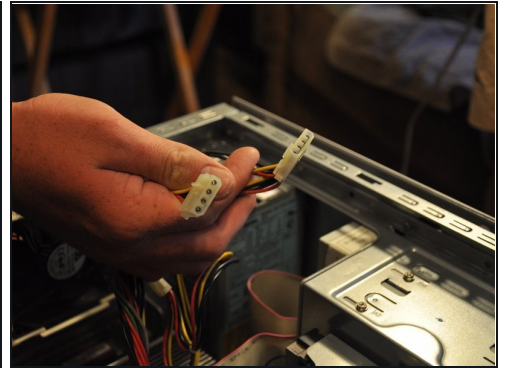
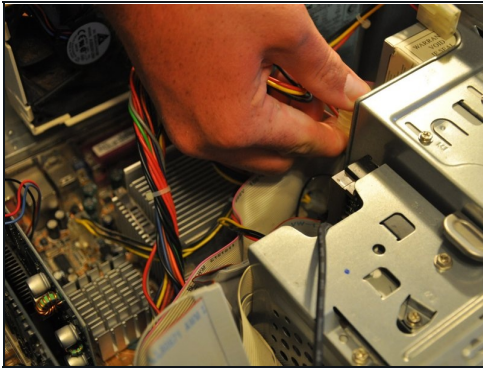
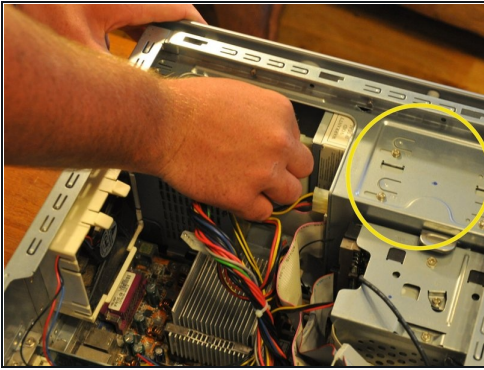
- Gently move the tower so that it is in the horizontal orientation.
- Press down the black tabs (proximal to you) that fasten the front panel to the tower.
- Press down on the distal, black tabs (symmetric with respect to the previous tabs).
- Pull front panel forward slightly.

Step 5



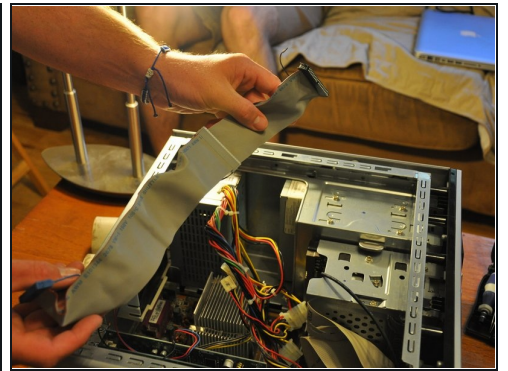
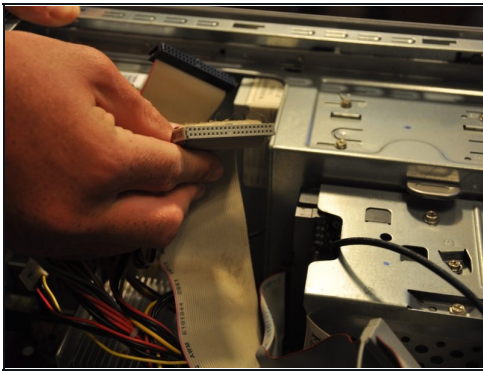
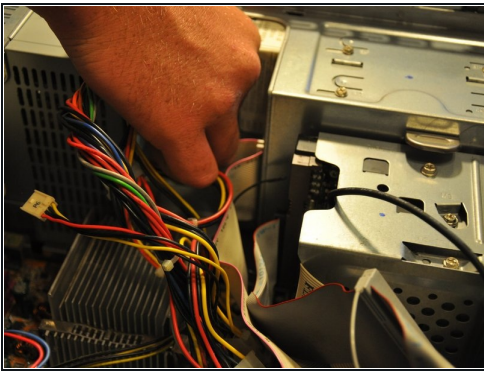
- Orient the tower vertically.
- The front panel will come off in a hinge-like fashion, exposing the drives underneath.

Step 6 — Optical Drive



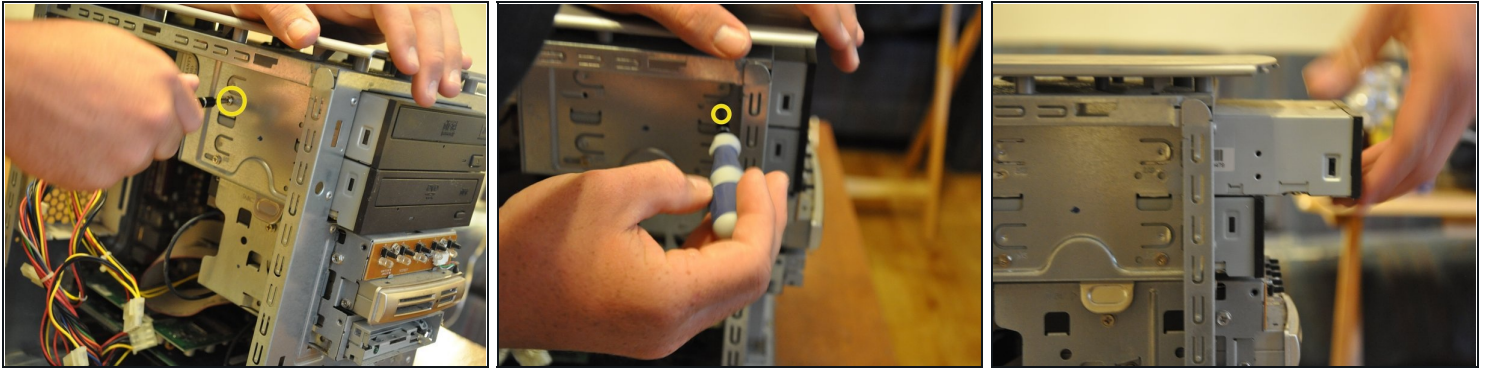
- Identify the optical drive.
- Pull the molex connectors out of the posterior end of the optical drive.

Step 7



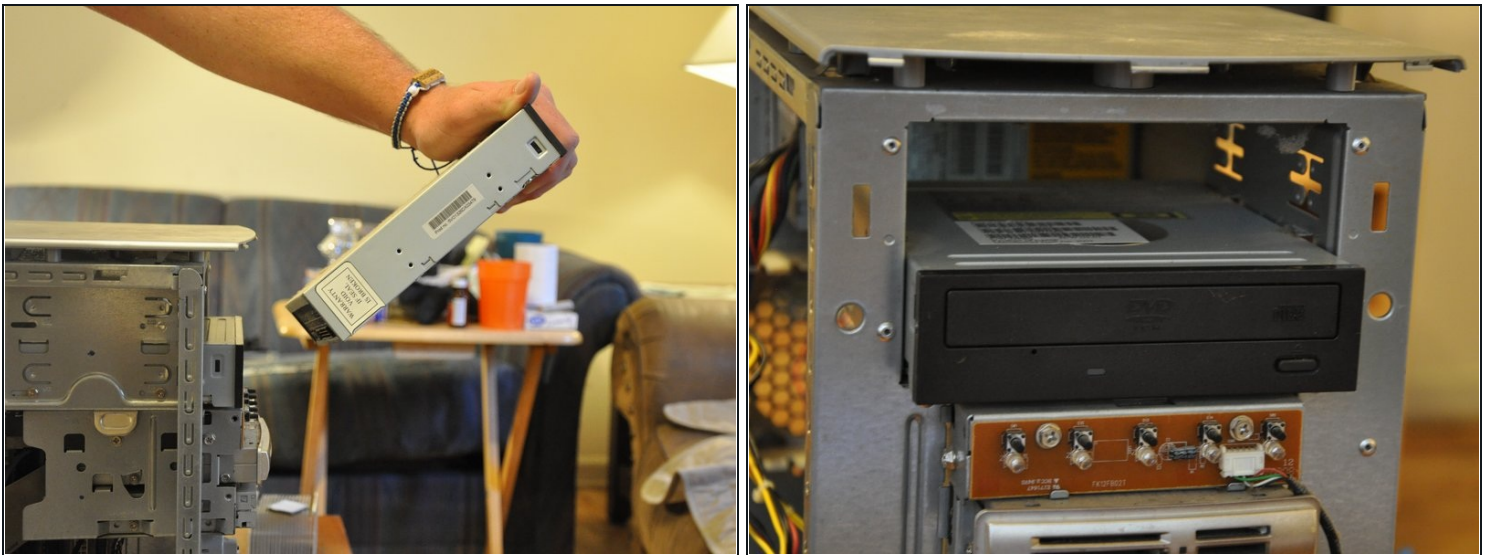
- Pull the ribbon cable out of the back of the optical drive.

Step 8



- Using the Phillips #0 screwdriver, remove the two 5 mm screws that fasten the optical drive into its port.
- Gently pull the optical drive through the front cavity.

Step 9



- Remove the optical drive completely from its port.

To reassemble your device, follow these instructions in reverse order.