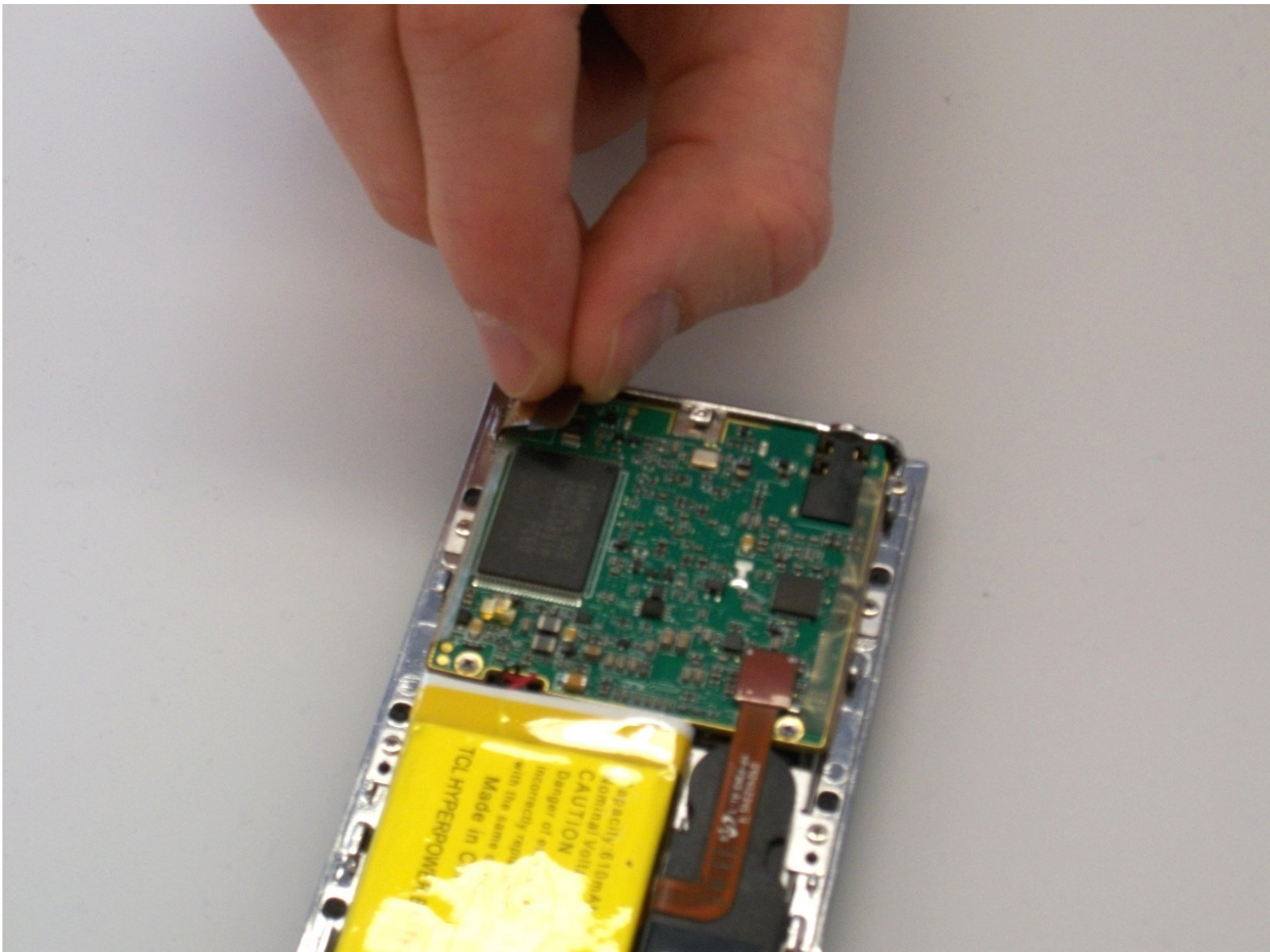




Samsung YP-P3 Printed Circuit Board Replacement

Written By: Andrew Groeneveld



**TOOLS:**

- [Phillips #000 Screwdriver](#) (1)

**PARTS:**

- [Samsung YP-P3 Printed circuit board replacement](#) (1)

Step 1 — Case Backplate



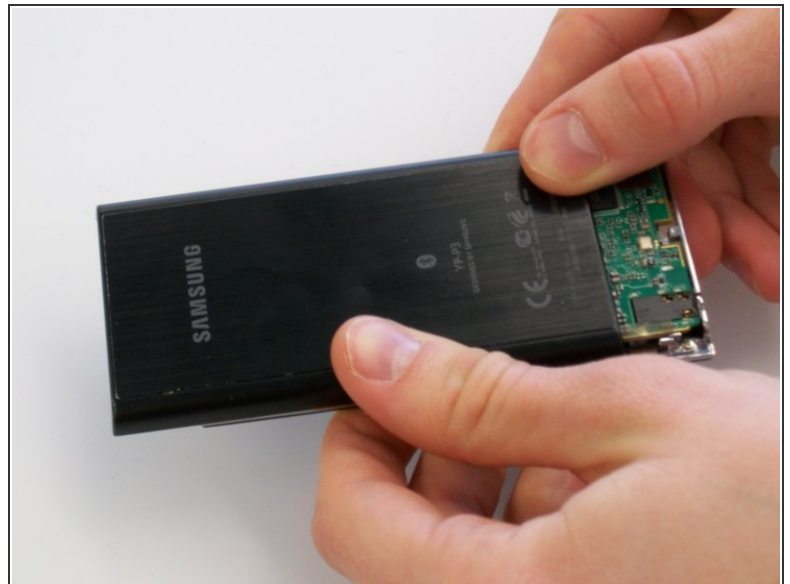
- Pry up the small black piece of plastic located between the volume [-] button and the HOLD/ON button.

Step 2



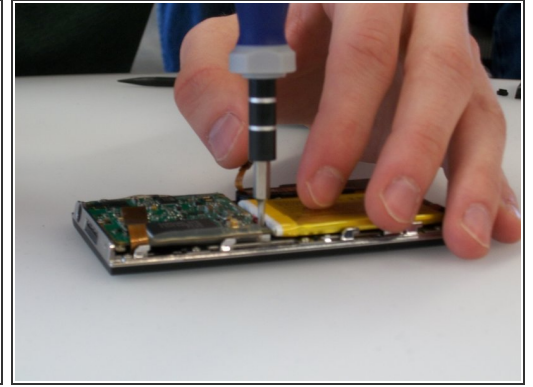
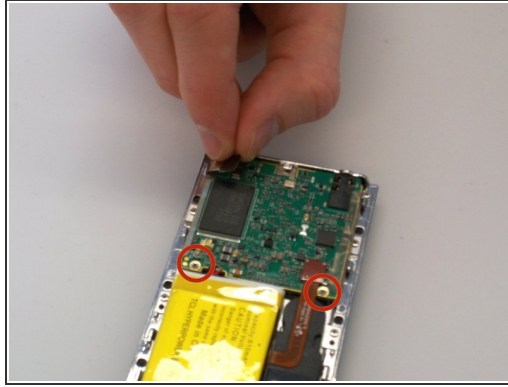
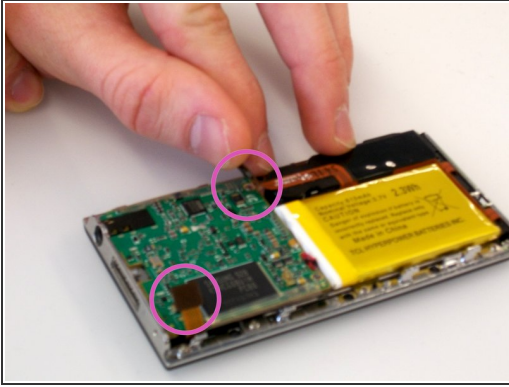
- Underneath the piece of plastic you just removed, there is a small screw (Phillips #000, 2.0 mm long). Use a Phillips #000 screwdriver to remove it.

Step 3



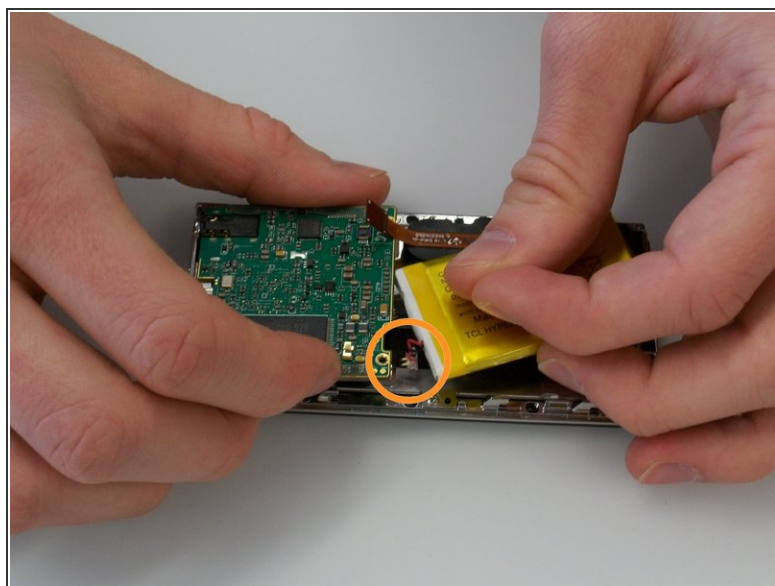
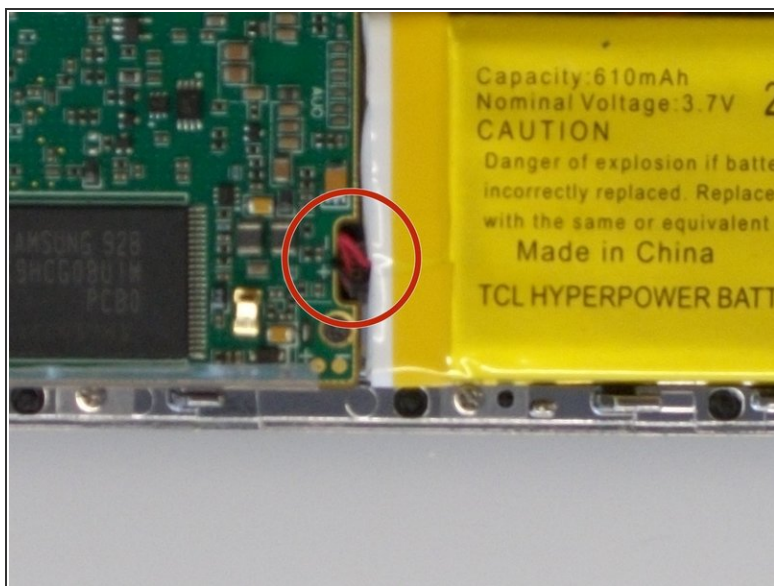
- Push on the backplate with both thumbs, sliding it towards the top of the device.
- Once it begins to move, lift up slightly. You can then slide the backplate all the way off.

Step 4 — Printed Circuit Board



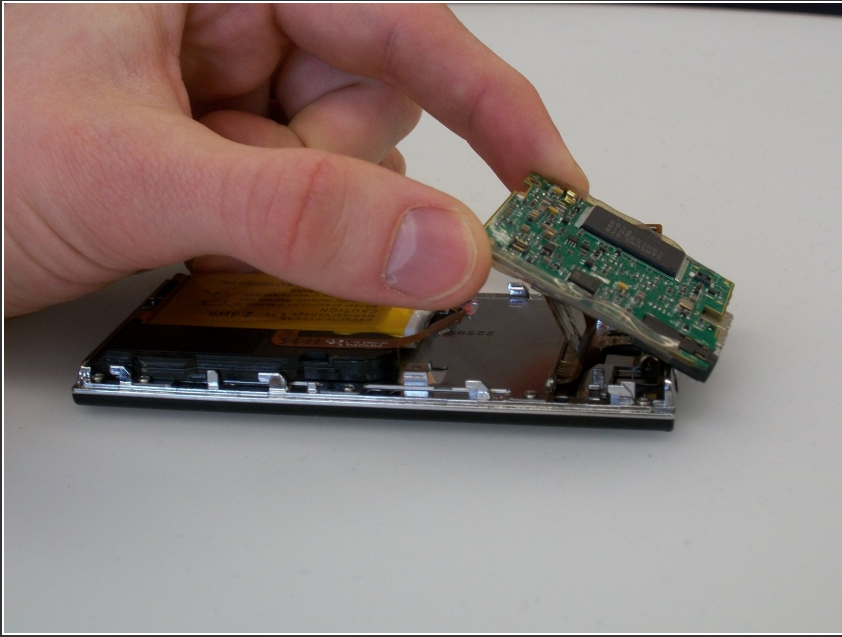
- Before removing the circuit board, we must remove the ribbon-like wires attached to two sides of the circuit board.
- There are two screws (Phillips #000, 2.0 mm long) holding in the circuit board. Use a Phillips #000 screwdriver to take out those screws.

Step 5



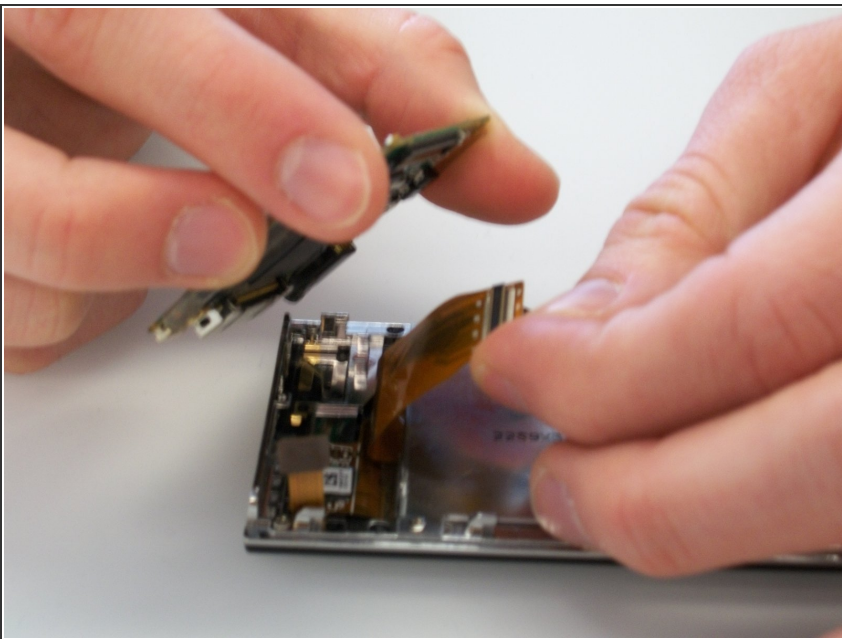
- The battery is also attached to the circuit board by a cable. The cable is difficult to disconnect with both components in place. It's best to lift the circuit board out partially to give yourself more room to disconnect the connector.
- The wire that is connected to the circuit board is connected by a plastic piece with two metal prongs.
- Use the pointy end of the spudger to place in between the computer board and the plastic piece and gently pry the prongs away from the circuit board.

Step 6



- Disconnect the battery connector, and then lift the circuit board up.

Step 7



- Finally, disconnect the ribbon cable on the bottom of the circuit board. You can then lift the circuit board all the way out.

To reassemble your device, follow these instructions in reverse order.