



# HP OfficeJet Pro 8000 Teardown

A look at the innards of the HP Officejet Pro 8000.

Written By: cf8geek



---

## INTRODUCTION

I just went along, tearing it apart. Pictures are of what I found, along with some of the tools I used.

---

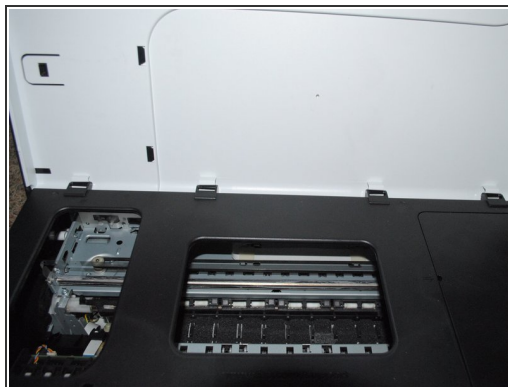


### TOOLS:

- [T10 Torx Screwdriver](#) (1)
  - [T8 Torx Screwdriver](#) (1)
-



## Step 1 — HP OfficeJet Pro 8000 Teardown



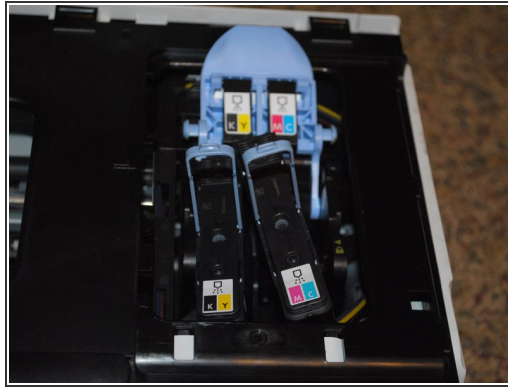
- Removing tray and such.

## Step 2



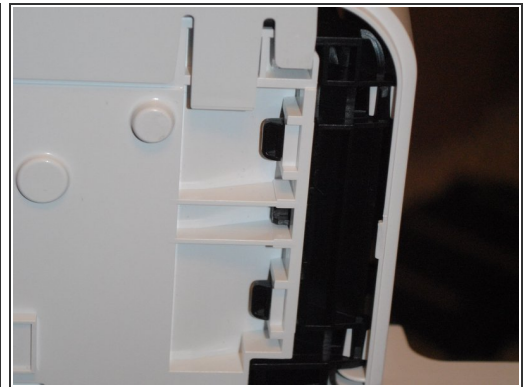
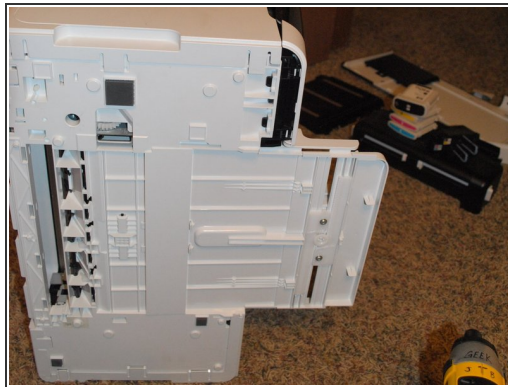
- Taking off the top.

## Step 3



- Print heads coming out.

## Step 4



- Ink coming out.

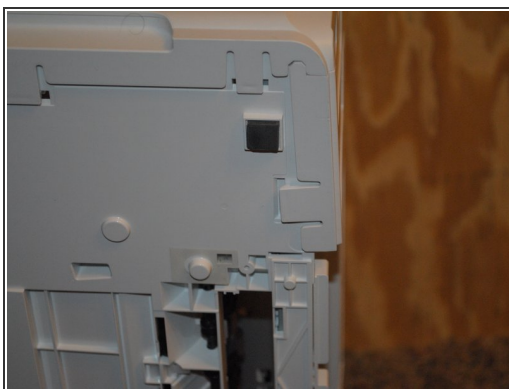


## Step 5



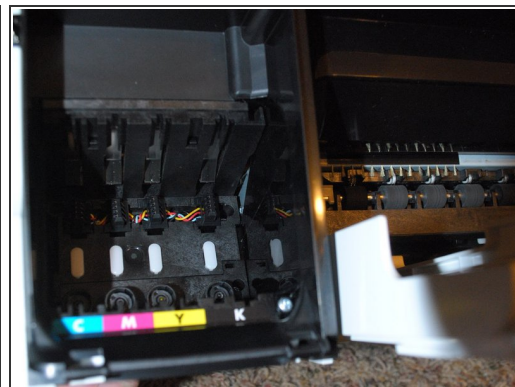
- T10 bit; time to start unscrewing.

## Step 6



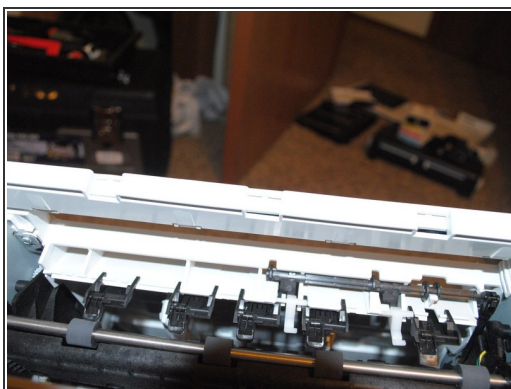
- Finding screws.

## Step 7



- Finding more screws.

## Step 8



- Finding hidden screws.



## Step 9



- Finding more hidden screws; breaking off side-panel cover thingy.

## Step 10



- The motherboard.

## Step 11



- Finding more release mechanisms.

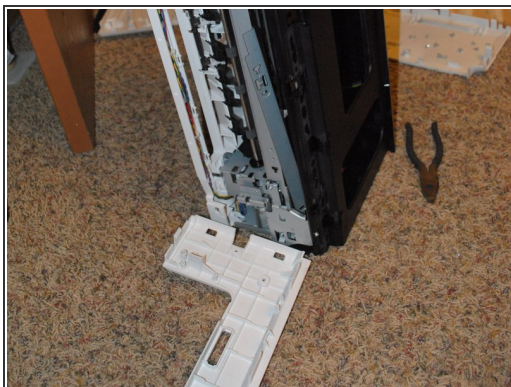
## Step 12



- Off come more outer panels; some with more (brute) force than others.



## Step 13



- Miscellaneous parts.

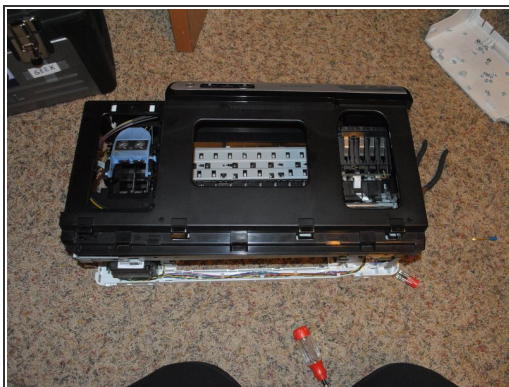
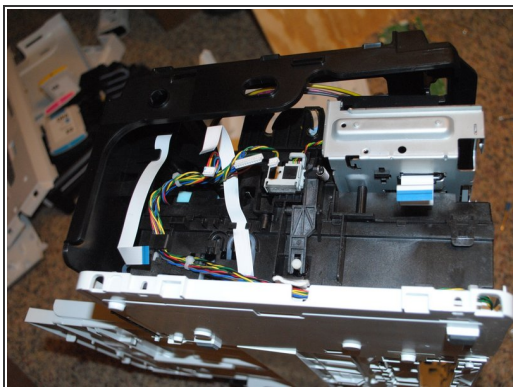
## Step 14



- More parts/stuff coming out.

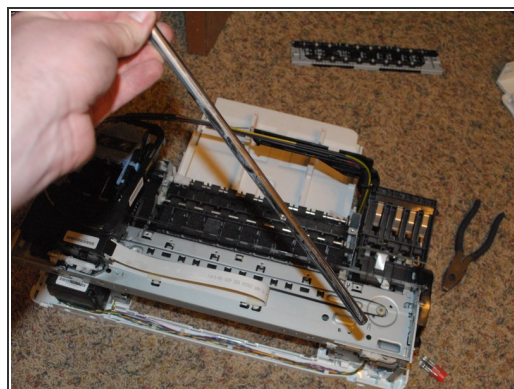
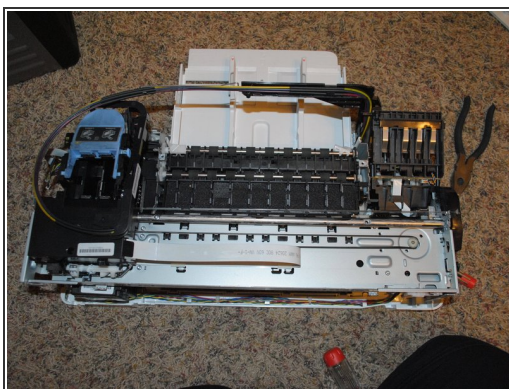


## Step 15



- Getting deeper!

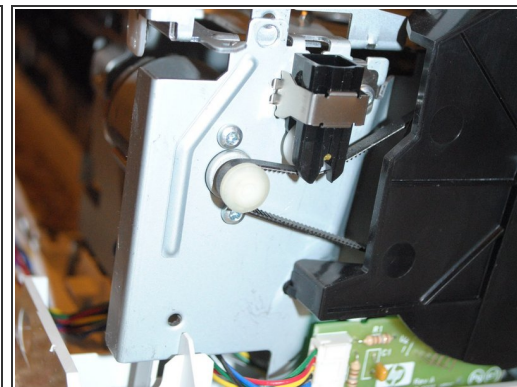
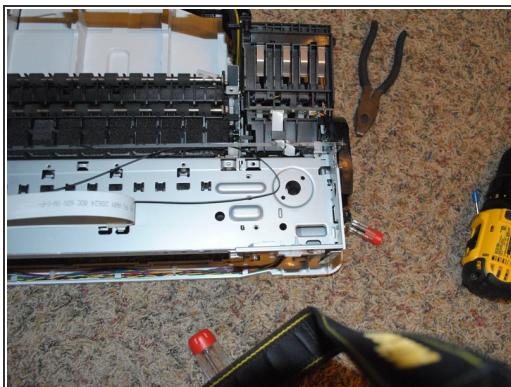
## Step 16



- Various assemblies coming apart/out.

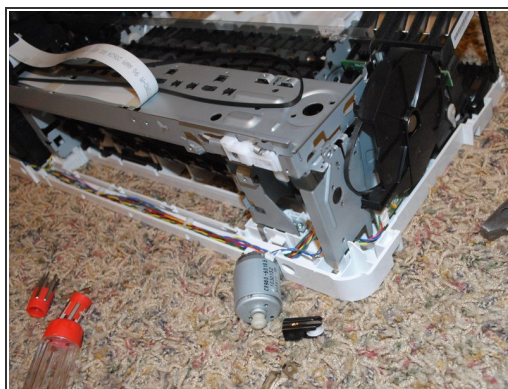
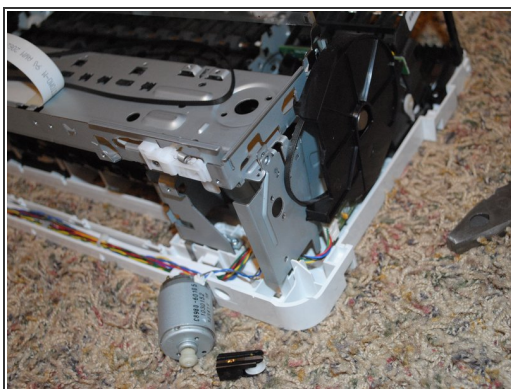


## Step 17



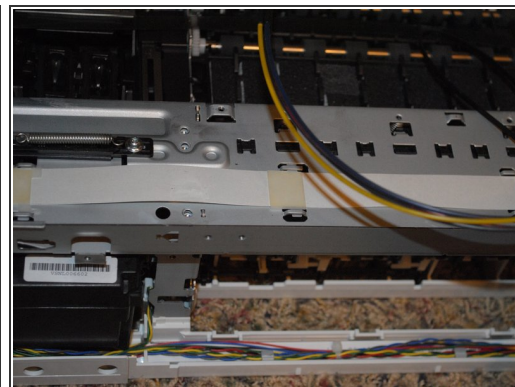
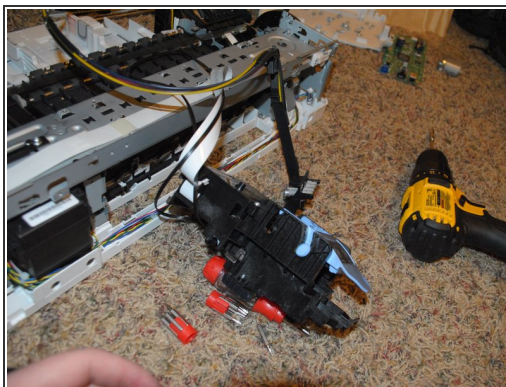
- Found some T8 screws used for a controller board and the motor screws.

## Step 18



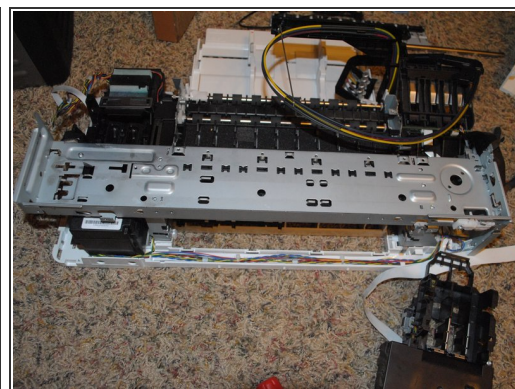
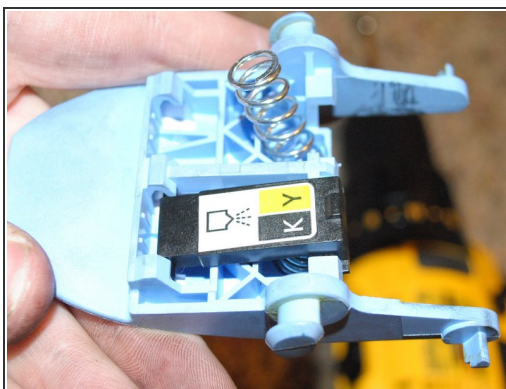
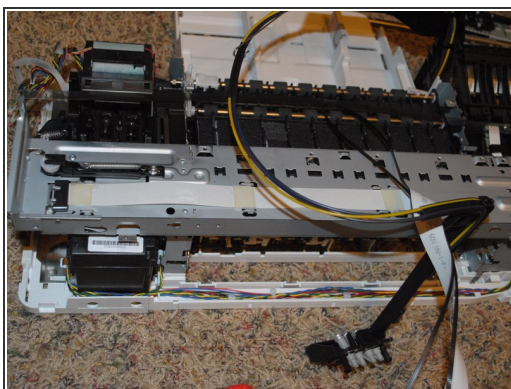
- Motor out, and plastic guide slide thingy detached from one end.

## Step 19



- Print head assembly/hoses coming out/apart.

## Step 20



- More print head stuff.

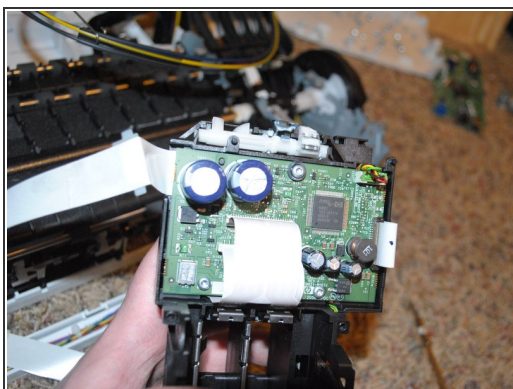


## Step 21



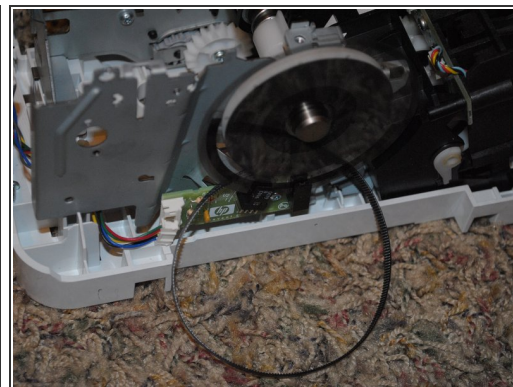
- More miscellaneous assemblies.

## Step 22



- Another group of circuitry.

## Step 23



- More mechanical parts.

## Step 24



- More assemblies, and a pile of junk...



## Step 25



- Leaked magenta, and as far as I went before calling the job "done enough".

To reassemble your device, follow these instructions in reverse order.