



Mr. Coffee DW13 Tubing Replacement

This guide will show you how to replace the white tubing in the base of your coffee maker that could be the reason it is leaking.

Written By: Kinsie Ward



INTRODUCTION

Then you will remove the base of the coffee maker, a couple small wires and with a little tug the tubing will pop right out.




TOOLS:

- [Medium Sized Phillips Head Screw Driver](#) (1)
 - [Large Needle Nose Pliers](#) (1)
-

Step 1 — Base



 Before performing this repair, be sure that your machine is unplugged and dry and that your work space is clean.

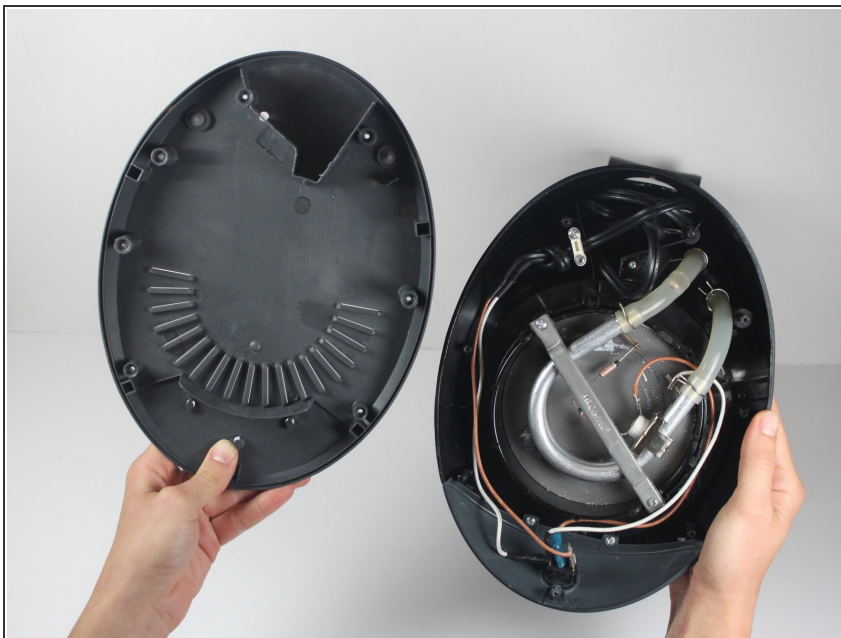
- Flip the Mr. Coffee DW13 over so that the lid is facing away from you and the base is facing toward you.

Step 2



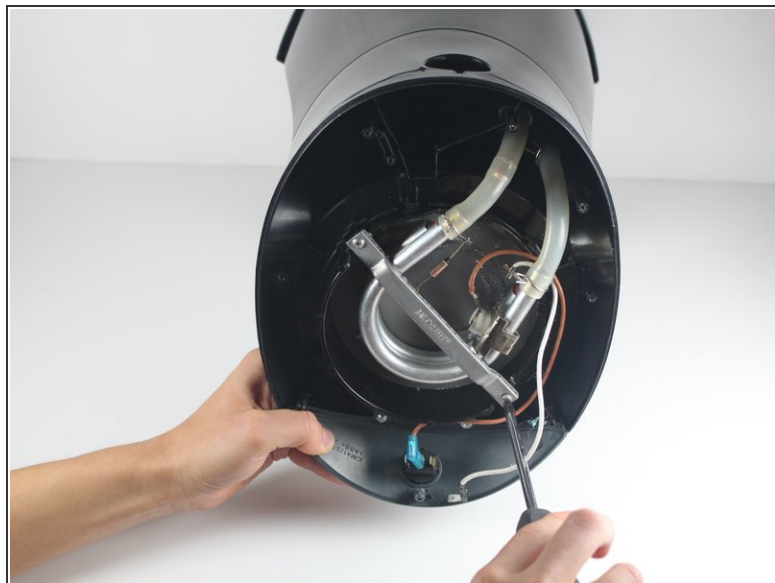
- Remove the eight 11 mm screws that secure the base of the machine with a Phillips Head #2 screwdriver.

Step 3



- Gently lift the base cover to expose the inside of the coffee machine.

Step 4 — Tubing



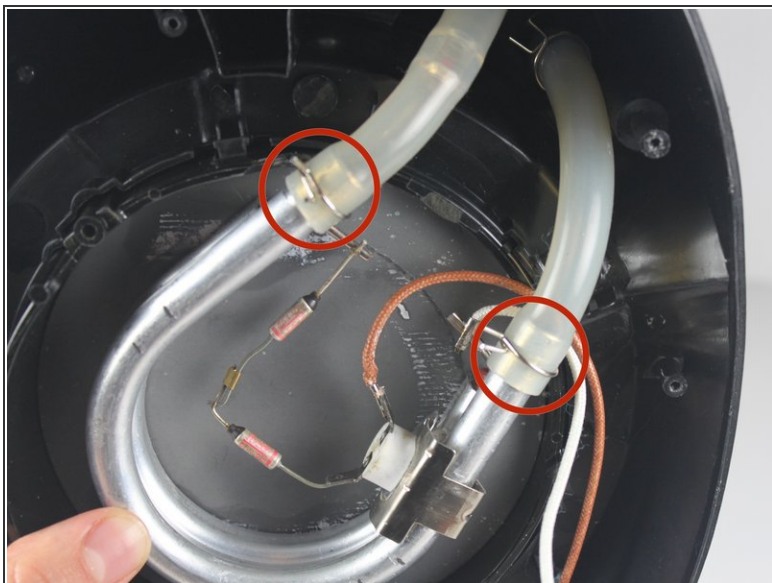
- Identify and remove the two 13mm screws securing the silver support bracket using a phillips head screw driver.

Step 5



- Gently lift the silver support bracket freeing the heating plate from the heating coil.

Step 6



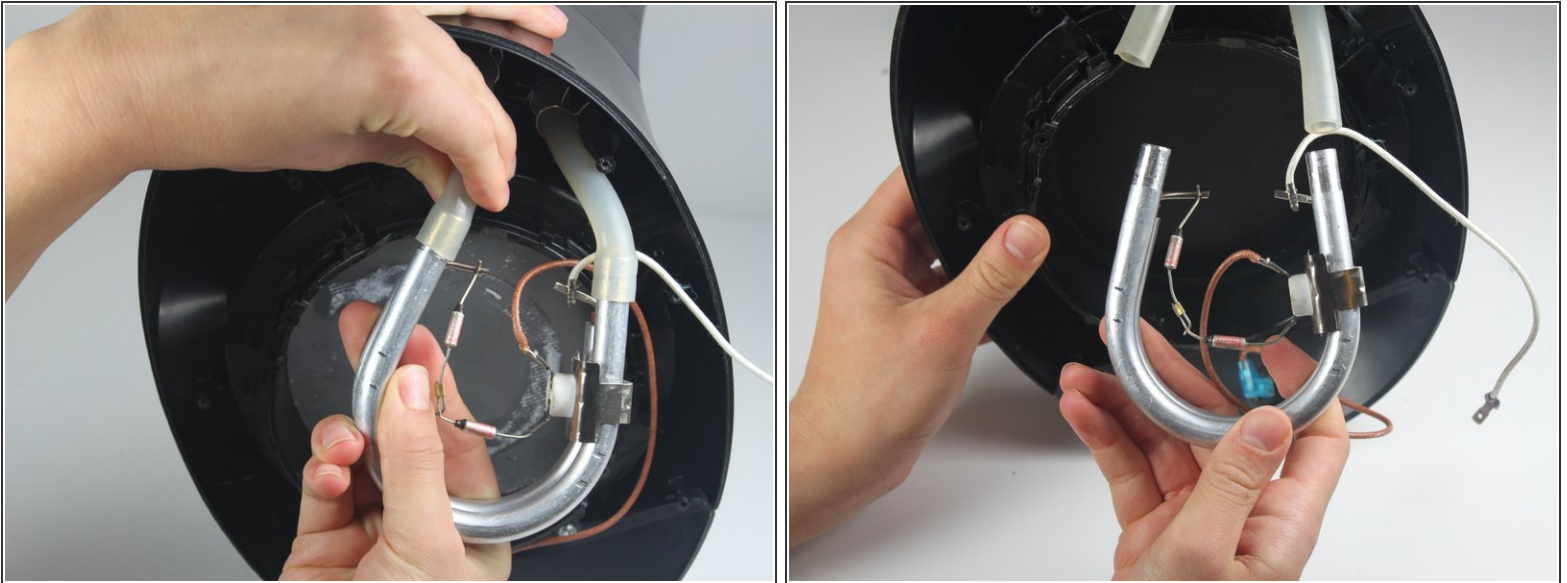
- Use pliers to pinch and loosen the crimps.

Step 7



- Once the crimps are loosened, slide them down the tubing.

Step 8



- Separate the tubing from the heating coil by grasping the tubing in one hand and the heating coil in the other and gently pulling apart.

Step 9



- Gently pull on plastic tubing, freeing it from the coffee maker
- ⓘ One of the tubes has a red ball check valve in the middle. Be sure to note which hole it connects to.

To reassemble your device, follow these instructions in reverse order.