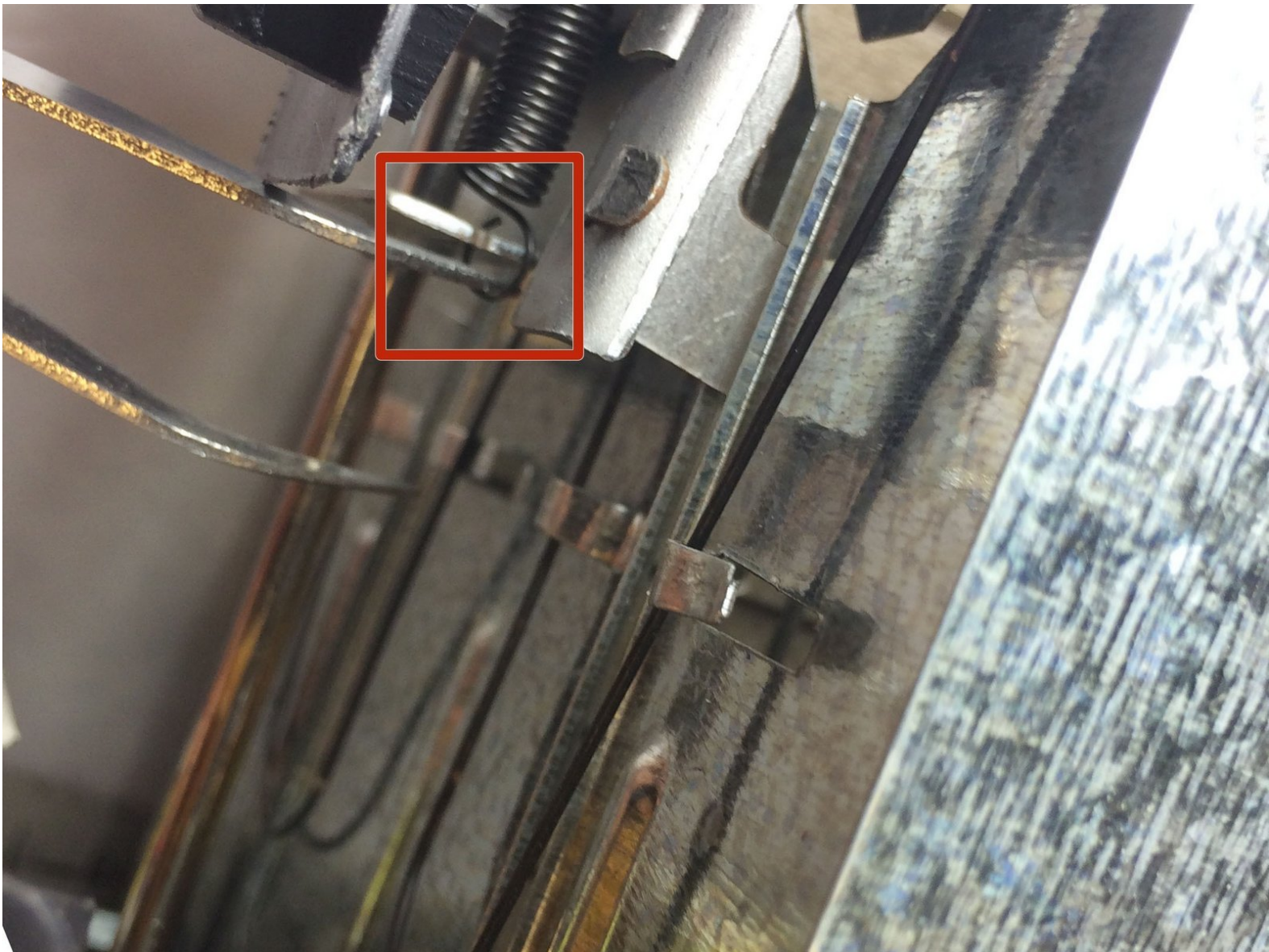




Oster 6329 Lever Catch Spring Replacement

This guide will show how to replace a broken lever catch spring for the Oster Toaster.

Written By: Blaine Oelkers



INTRODUCTION

Replacing the spring can be somewhat difficult, so be prepared to deal with a little frustration when removing the spring.

TOOLS:

- [Phillips #1 Screwdriver](#) (1)
 - [Tweezers](#) (1)
-

Step 1 — Outer Shell Removal



- Using the Phillips-head #2 screwdriver, unscrew the three 1cm Phillips-head screws on the plastic base of the toaster to separate the outer metal shell from the plastic base.

Step 2



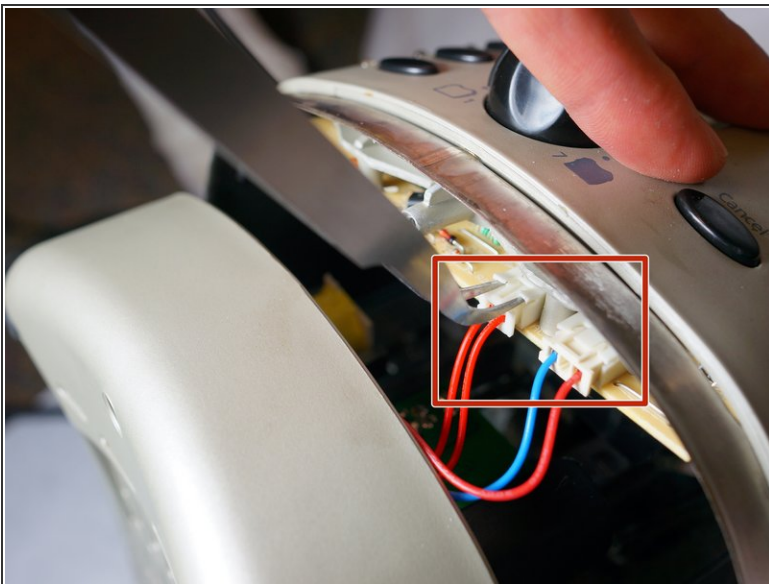
- Push the plastic push-down handle down and pull the plastic handle straight from metal arm.

Step 3



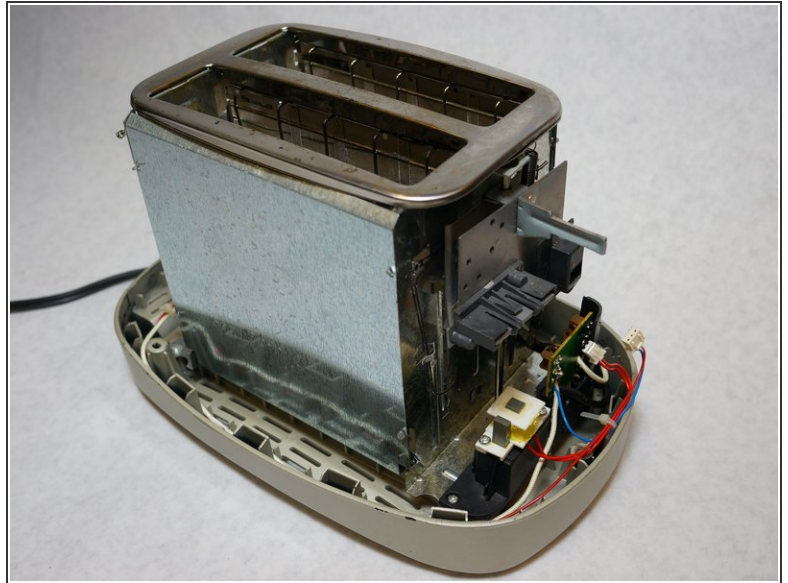
- Loosen the outer metal shell from the plastic base by holding the plastic base while pulling up on the metal shell.
- ⓘ Only lift the outer shell a little so as not to disconnect the cables that connect the circuit board.

Step 4



- Disconnect the cable clips from the circuit board using the tweezers to free the outer metal shell from the plastic base.

Step 5



- Lift the top outer metal shell.

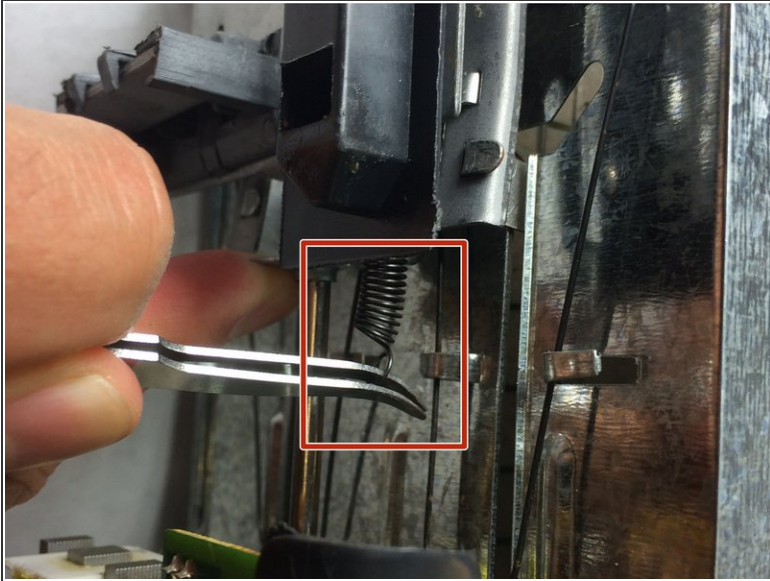
⚠ Carefully lift the outer metal shell at an angle so as not to damage the components in the front of the toaster.

Step 6 — Lever Catch Spring



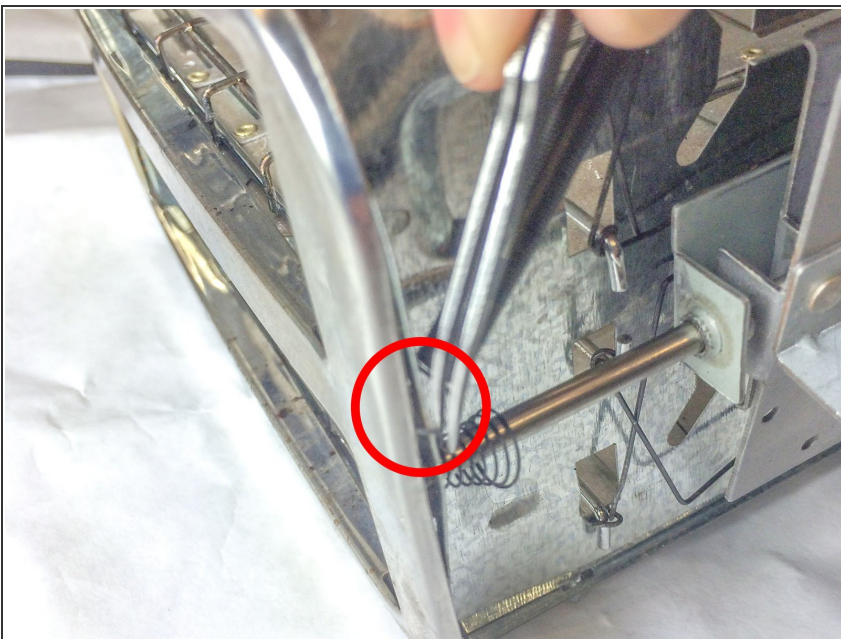
- Insert the tweezers between the spring and the bottom of the lever to release the spring.

Step 7



- Remove spring from the bottom of the lever.
- The spring should only be connected to the top of the toaster after this is complete.

Step 8



- Insert the tweezers between the two metal flaps located at the top of the toaster.
- Hold the spring and turn it sideways to lay it flat along the top of the toaster.
- Pry the spring from the top of the toaster.

To reassemble your device, follow these instructions in reverse order.