



# Toshiba Satellite L455D-S5976 Battery Replacement

This guide will show you how to replace the battery in your device.

Written By: NateJohnson



---

## INTRODUCTION

With this guide, you will learn how to simply remove the battery from the computer so that it can be replaced.

---



### PARTS:

- [New battery](#) (1)
-

## Step 1 — Battery



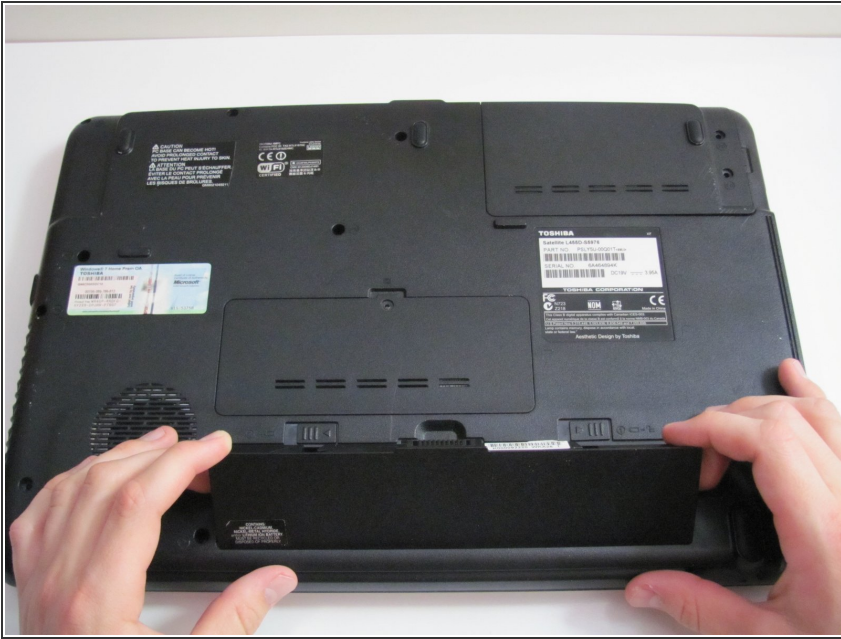
- Unlock the right tab by sliding it to the right with your finger.

## Step 2



- Hold the left tab to the left using your left hand.

## Step 3



- Remove the battery by placing your finger in the middle groove and lifting up.

To reassemble your device, follow these instructions in reverse order.