



Disassembling Motorola i265 LCD Screen

Written By: Jonathan Uder



INTRODUCTION

This repair guide explains how to remove the phone's LCD screen for repair and replacement.

TOOLS:

- [Pliers may be helpful](#) (1)
 - [Spudger](#) (1)
 - [T6 Torx Screwdriver](#) (1)
-

Step 1 — Rear Casing/Battery/SIM Card



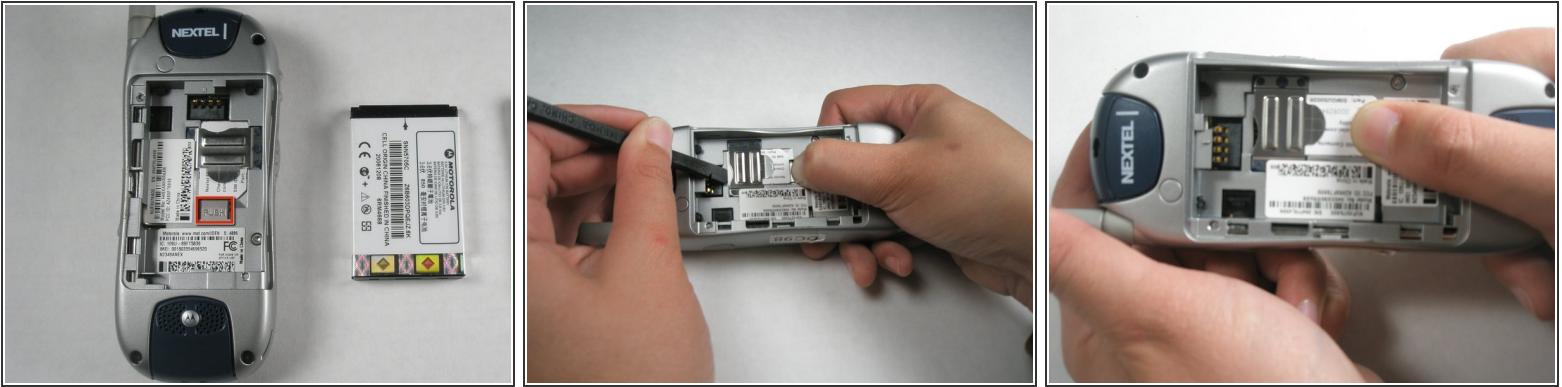
- Press thumb against the top of the rear casing as shown and push down as you slide the casing off of the body.
- ⓘ You should hear a click as the latches on the casing disengage.

Step 2



- To remove the battery, press thumb against the bottom edge of the battery and push towards the top of the phone.
- Then, lift the bottom edge of the battery upwards out of the body. Gently pull the battery towards yourself, and out of the phone.

Step 3



- To remove SIM card, press thumb against tab marked “PUSH.”
- While still pressing the PUSH tab, gently press spudger into the groove between the top of the SIM card and the body. Use spudger to slide SIM card toward the PUSH tab, so that when the spudger reaches the metal cover, the card itself is depressing the tab.
- Press your thumb against the exposed section of the SIM card, and slide it towards the rear of the phone until it is completely free of the metal cover.

Step 4 — Logic Board



- To remove the antenna, first extend it all the way.
- Grab the rubber end connected to the phone and twist counterclockwise until the antenna comes out altogether.
- ❗ If the rubber end won't twist manually, try using pliers to get it started.

Step 5



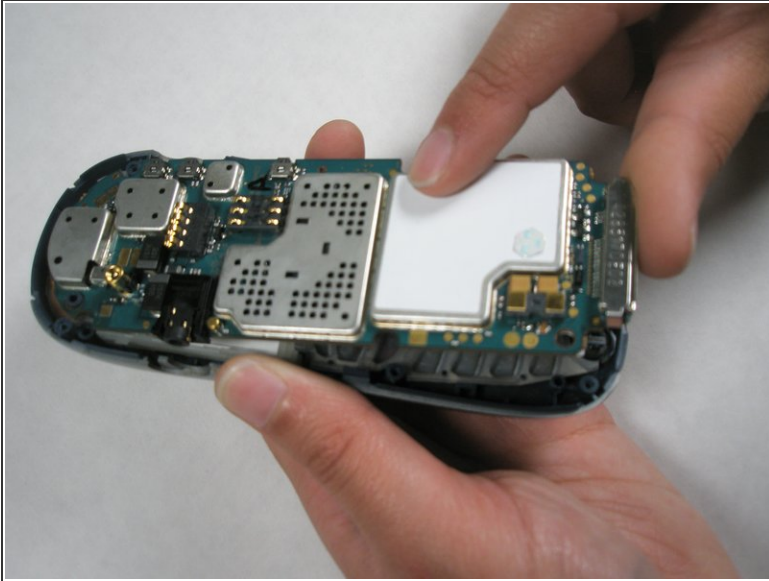
- Locate all five screws on the phone, as indicated.
- Using a T-6 screwdriver, remove each screw by turning it counterclockwise until it is free of the casing.

Step 6



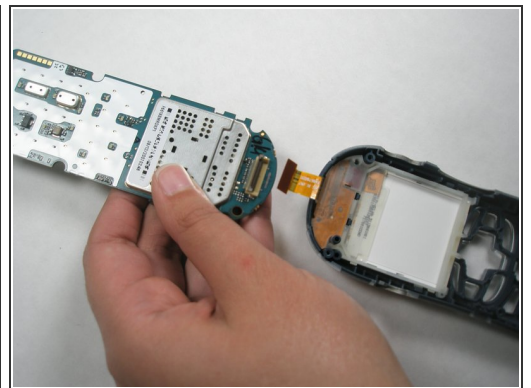
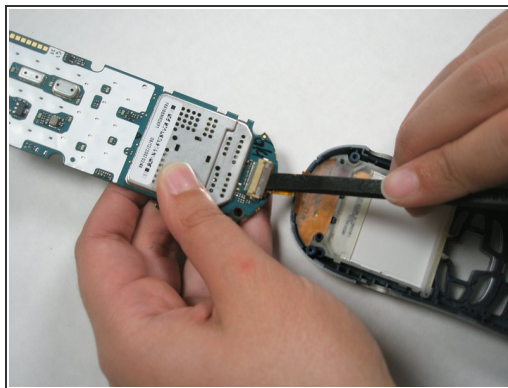
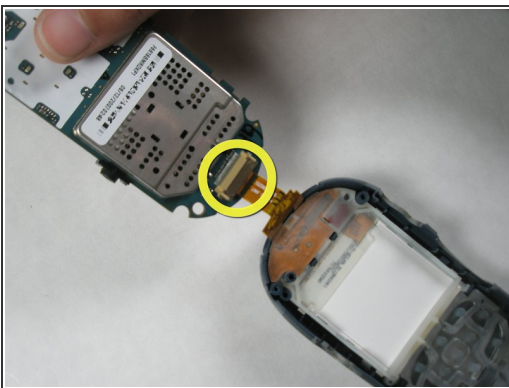
- Carefully separate the two sides of the casing by pulling each side apart as if opening a book. Do not be alarmed if the rubber volume control button falls out of the casing.
 - Lay the sides of the phone so they are open side up.
 - On the side of the phone with the logic board, locate the screw as indicated.
 - Use the T-6 screwdriver to remove the screw from this part of the board.
- ⓘ Note: Take special care not to lose the white washer that separates the screw from the logic board.

Step 7



- Place your thumb at the bottom of the logic board. Carefully lift up with your thumb to lift the logic board out of the casing.
- ⓘ Note: Do not try to completely remove the circuit board from the phone as it will be connected to the electrical strip at the top of the phone.

Step 8



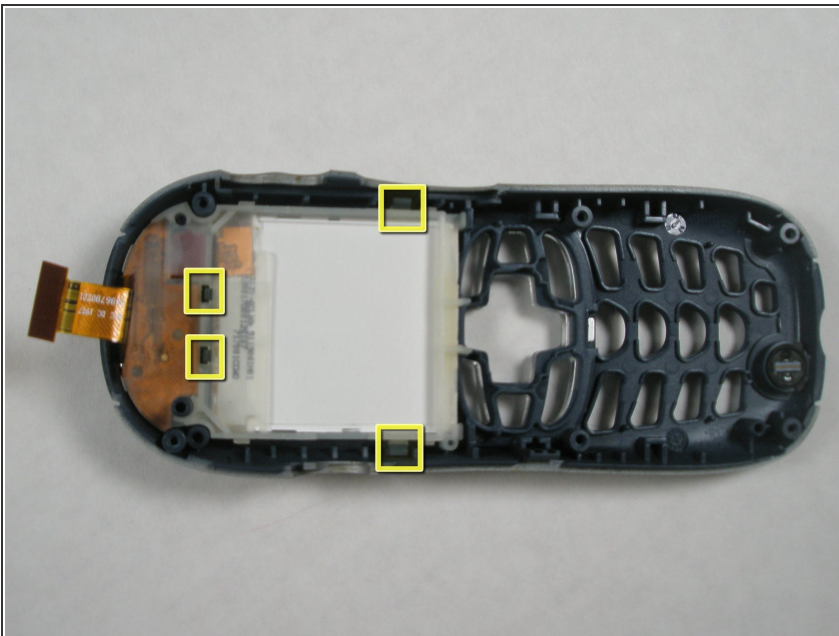
- Locate the switch connecting the the logic board to the electrical strip.
- Slide spudger under the switch and lift up to free the strip. This will separate the logic board from the phone cover

Step 9 — Keypad



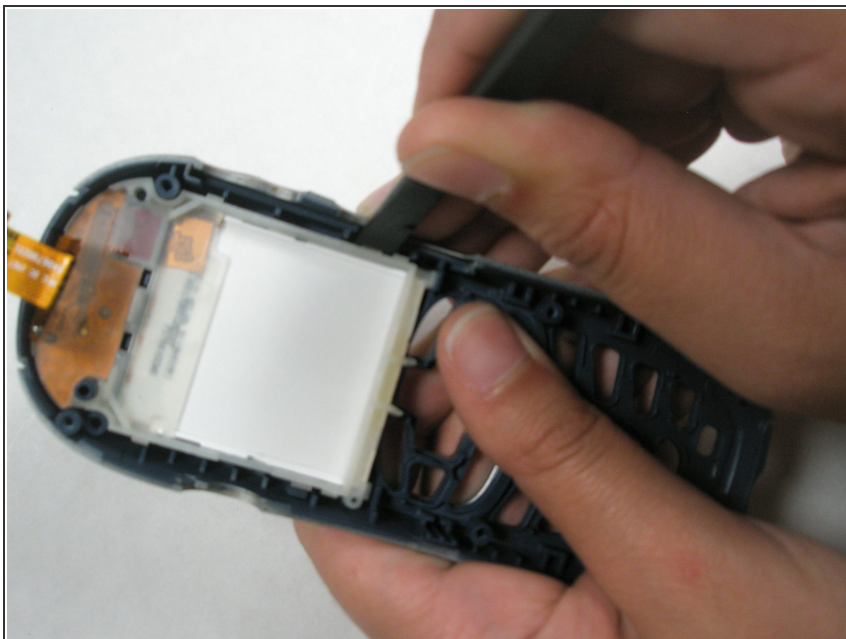
- After you remove the logic board, there is nothing holding the keypad in place. Turn the phone casing over, and it should simply fall out.
- ⓘ If it does not immediately fall out after you turn the casing over, lightly press a few of the buttons to help it along.

Step 10 — LCD Screen



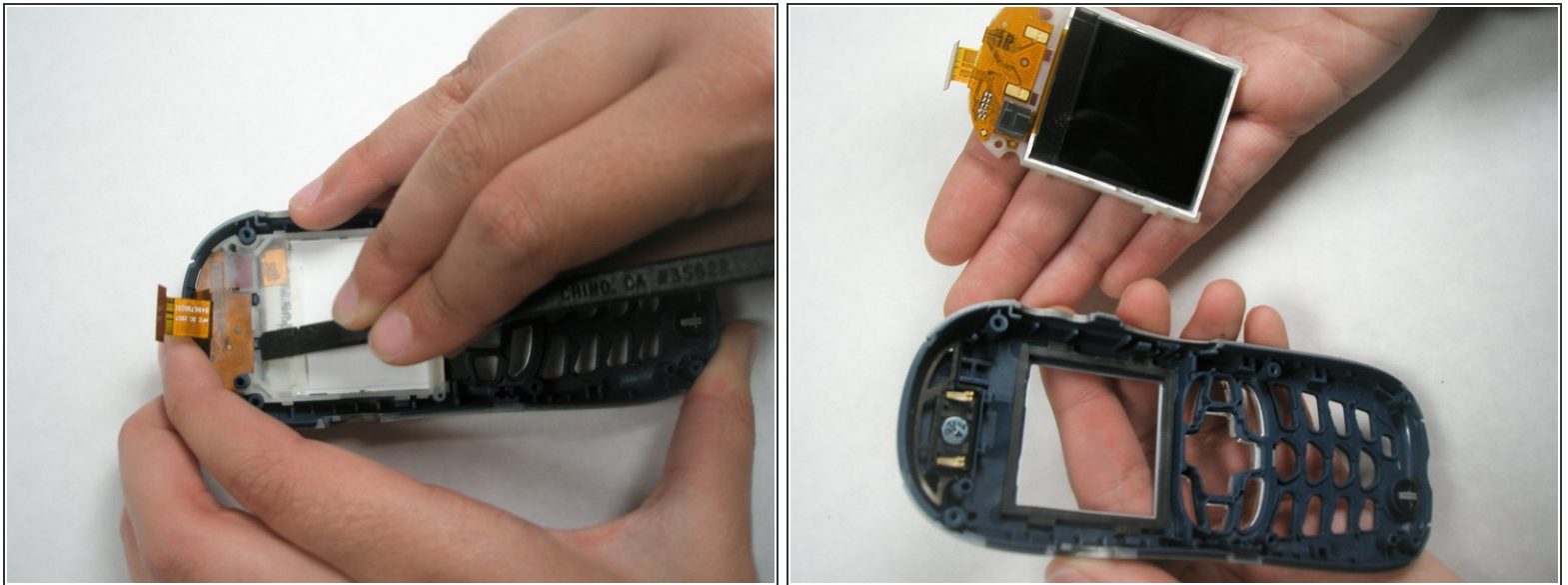
- To remove the LCD screen, you will have to first release the 4 tabs that hold the screen in place.

Step 11



- To release the 2 lower tabs, insert the flat end of the spudger between the tab and the LCD screen. Press firmly until the spudger hits the back of the faceplate. This should release the tab.
- Repeat this for the second bottom tab.

Step 12



- To release the 2 upper tabs, use the flat end of the spudger to push the tab towards the top of the phone. The LCD screen should move above the tab. Repeat this for the second tab.
 - ⓘ If the LCD screen locks into the bottom tabs again, release them and then use your thumb to prop up the bottom of the screen while you release the upper tabs.
 - To fully remove the LCD screen, flip the casing over so that the top face of the phone is in your palm. The LCD screen should fall out of the casing.
- ⚠ Avoid as much contact with the actual screen as possible. Pressure on the screen may damage it.

To reassemble your device, follow these instructions in reverse order.