



Sansa e250 Screen Replacement

This guide needs additional details to complete...

Written By: Jarrod



INTRODUCTION

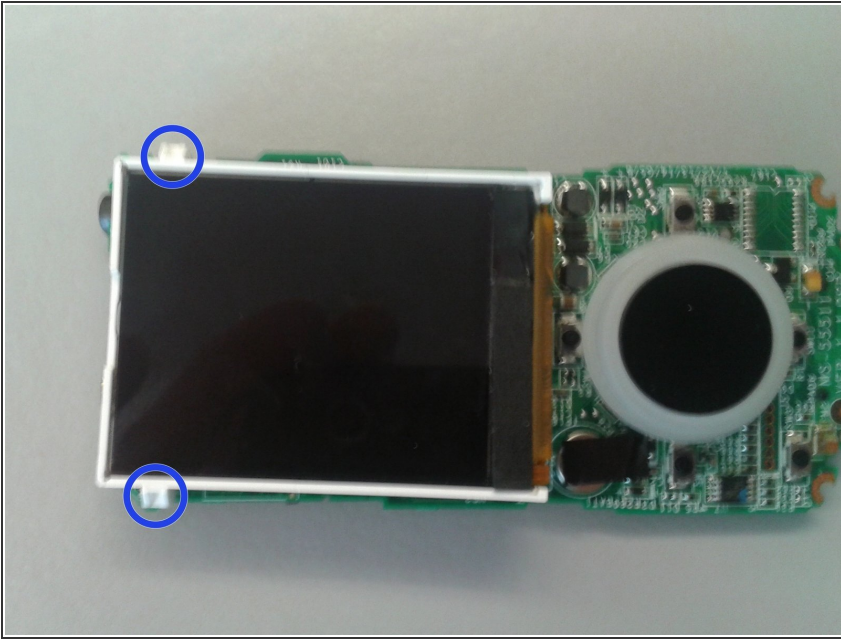
This guide needs additional details to complete the procedure. The LCD screen is affixed to the motherboard and cannot be replaced without specialized tools.



TOOLS:

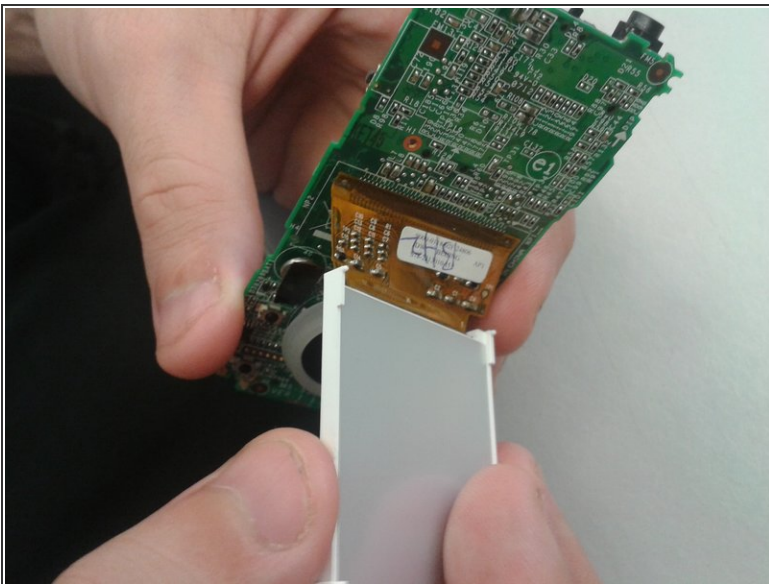
- [Phillips #00 Screwdriver](#) (1)
 - [Spudger](#) (1)
-

Step 1 — Screen



- Unsnap the screen clips from the motherboard

Step 2



⚠ This is as far as you can go without specialized board rework equipment. Trying to forcibly remove the screen will destroy it, but you can gently move it aside for cleaning or access to other board components.

To reassemble your device, follow these instructions in reverse order.