



Motorola W385 speaker replacement

Written By: Koedy Brant



INTRODUCTION

If you are having trouble hearing, this guide will help you replace your speaker.



TOOLS:

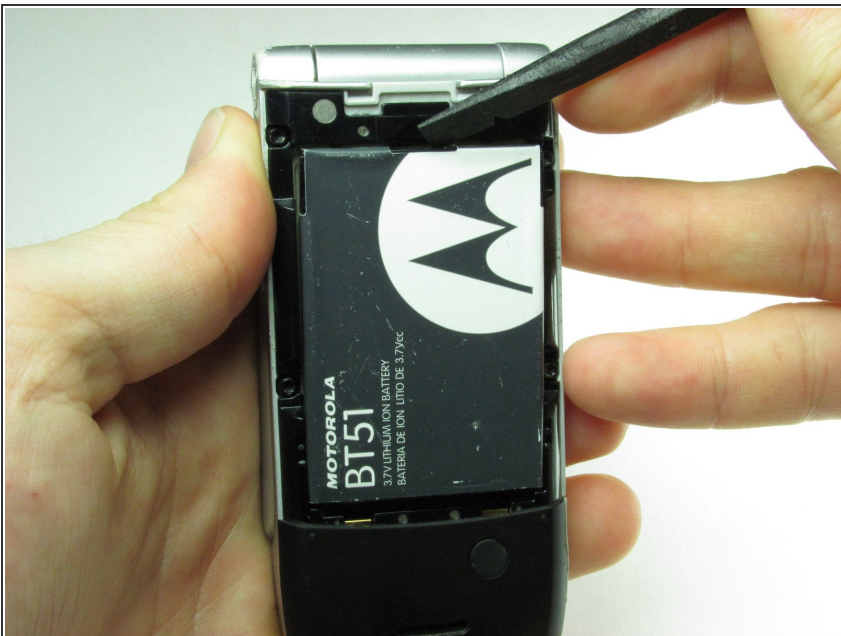
- [Spudger](#) (1)
 - [Tweezers](#) (1)
-

Step 1 — Battery



- Using your finger, press down on the clip holding the back cover on.

Step 2



- Using the spudger or your finger, gently pull the battery out from the top.

Step 3 — Front Casing



- Remove the four rubber pieces from the face of the phone using the sharp end of the spudger.

i The rubber pieces are held in with a mild adhesive.


Step 4



- Remove the four Torx-6 screws from underneath the rubber pieces.

Step 5



- Close the phone before proceeding.
 - Using the flat end of the spudger, insert it under the plastic at the top left of the phone.
 - Gently, although a small amount of force is required, use a twisting motion to pull the plastic casing away from the body of the phone.
 - Continue to move around the phone counter clockwise until the casing is separated from the body.
-  It is not unusual for it to pop off before making it back to the starting point.

Step 6



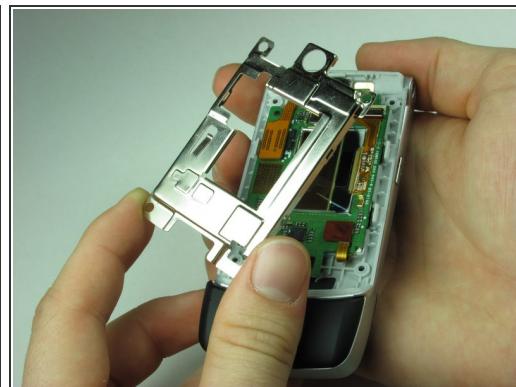
- If the casing has not popped off of the body, remove it carefully from the the phone.

Step 7 — Top Logic Board



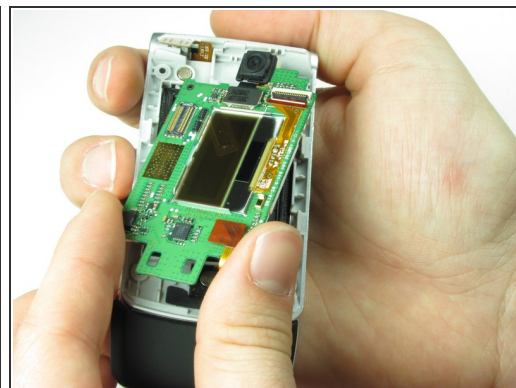
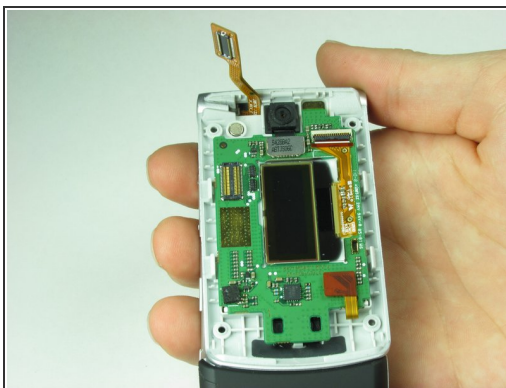
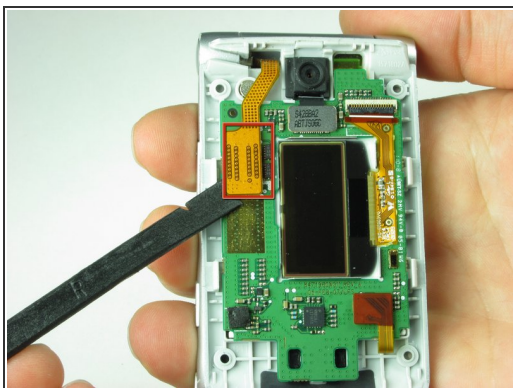
- After completing Steps 3-6 in the casing repair guide, your phone should look like this.

Step 8



- Use the spudger to unhinge the four clips around the metal casing of the top logic board.
- Gently take off the metal casing of the logic board.

Step 9



- Use spudger to gently disconnect the ribbon cable from phone.

⚠ Gently remove Logic Board making sure not to damage any other components.

Step 10 — Main Speaker



- Ignoring the top logic board, take the phone in your hand and turn your attention towards the speaker.

Step 11



- Place the spudger between the speaker and the clip shown.
- Separate the clip from the speaker while lifting on the speaker.
- The speaker should separate. Use the tweezers to grab the speaker.

To reassemble your device, follow these instructions in reverse order.