



# Nokero N222-Huron Mounting Technique

Allows the user to mount the device to a wall or ceiling.

Written By: Vinny Capone



---

## INTRODUCTION

Follow this guide to mount your light in to the wall or ceiling and illuminate your work- or living-space.



### TOOLS:

- [Phillips #2 Screwdriver](#) (1)
-

## Step 1 — Nokero N222-Huron Mounting Technique



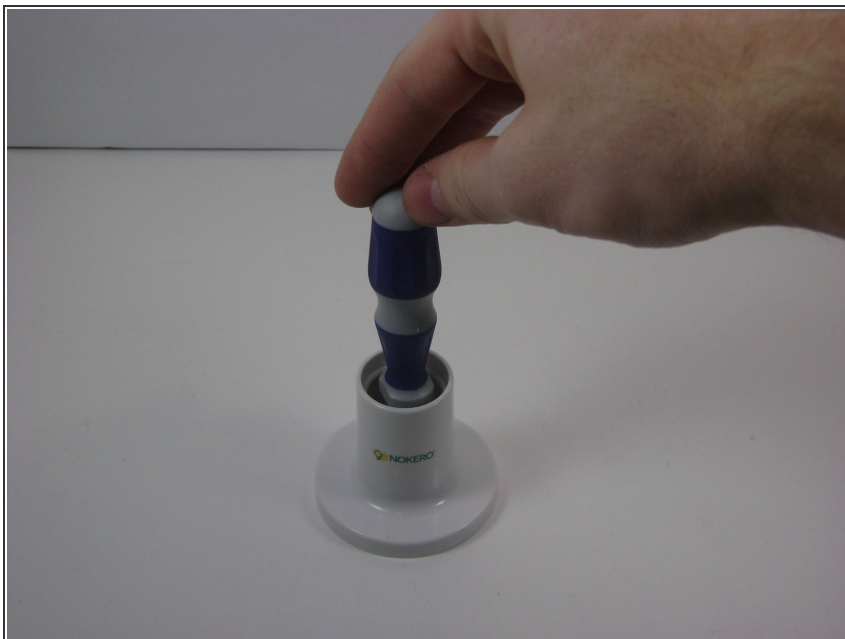
- Place the mounting bracket in the desired location and mark the center location. This is where the screw will be placed.
- ❗ It is optional to drill a pilot hole for the screw if splitting is a concern (usually for mounting in wood).

## Step 2



- Place the screw through the bracket, as shown, and screw it into the marked or drilled location.

## Step 3



- Make sure the bracket is facing in the desired direction before tightening the screw.
- ⓘ When the Nokero logo is facing forward, the light will pivot forward and backward.

## Step 4



- Place the light in the bracket as shown and turn clockwise until it is secure.

To remove or change the fixed mount for your device, follow these instructions in reverse order.