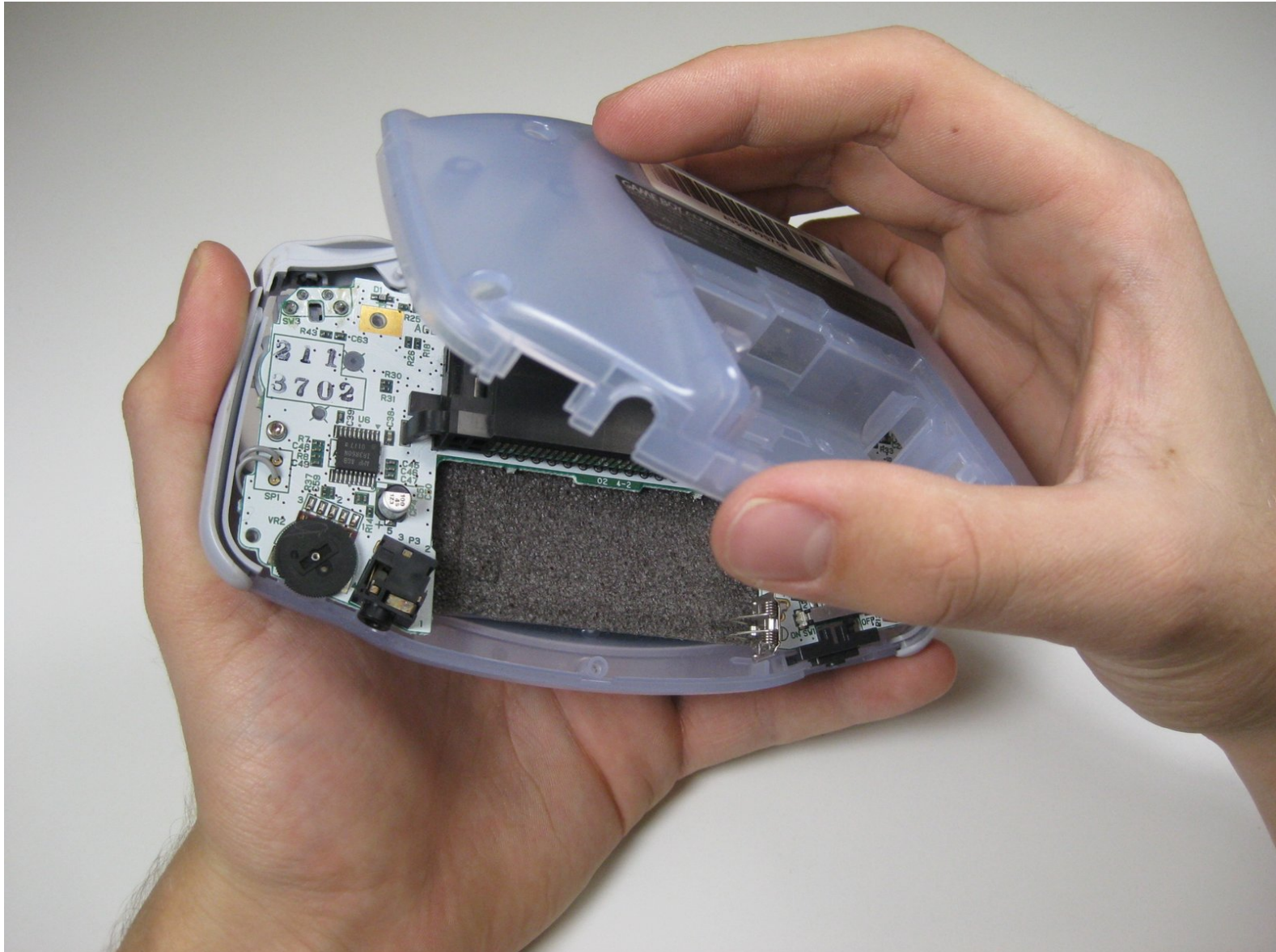




Game Boy Advance Back Panel Replacement

Written By: Aldo Corona



INTRODUCTION

How to remove the back panel from a Game Boy Advance.

TOOLS:

- [Phillips #1 Screwdriver](#) (1)
 - [Tri-point Y1 Screwdriver](#) (1)
-

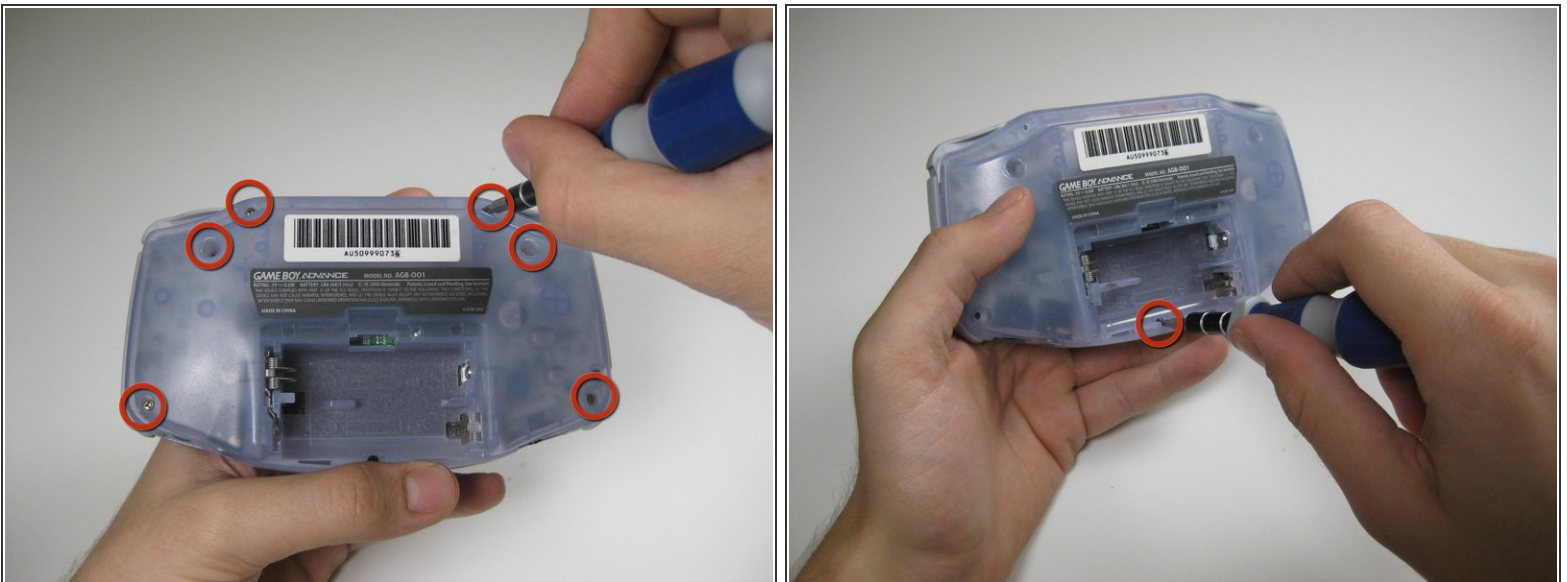
Step 1 — Remove the Battery Cover/Batteries



- Take the battery cover off by releasing the locking tab and hinging the cover away. Remove the batteries inside the cover

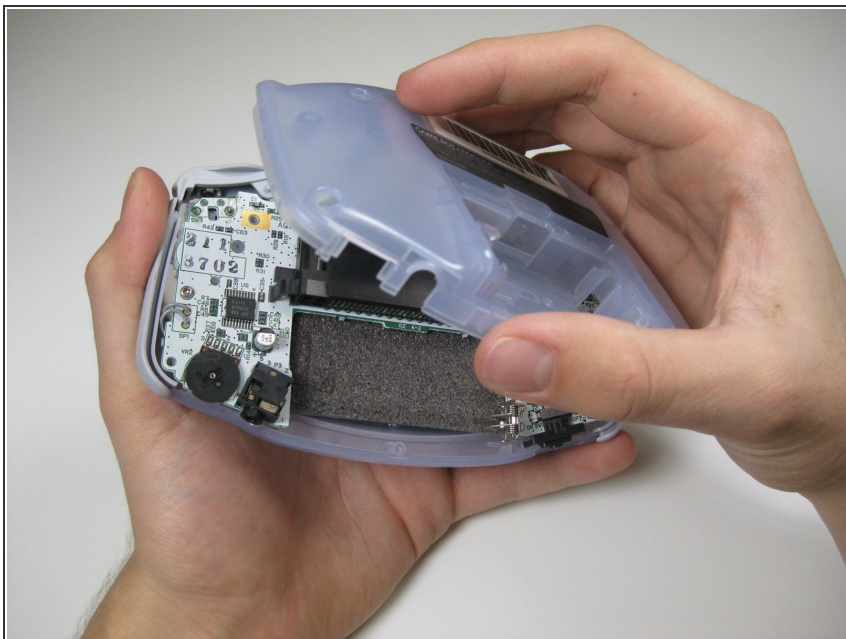
⚠ Do not forget to remove the batteries! This applies to working with any electronic device as working with live electricity may damage the device or cause malfunctions

Step 2 — Unscrew the Back Panel



- Remove the six back panel screws using a Tri-wing Screwdriver.
- Remove bottom back panel screw with a Phillips #1 screw driver. (Image #2)

Step 3 — Remove the Back Panel



- Remove the back panel by pulling away with one hand and the front secured in the other hand.

⚠ Removal of the back panel may cause shoulder buttons and side panels to come loose and fall off.

To reassemble your device, follow these instructions in reverse order.