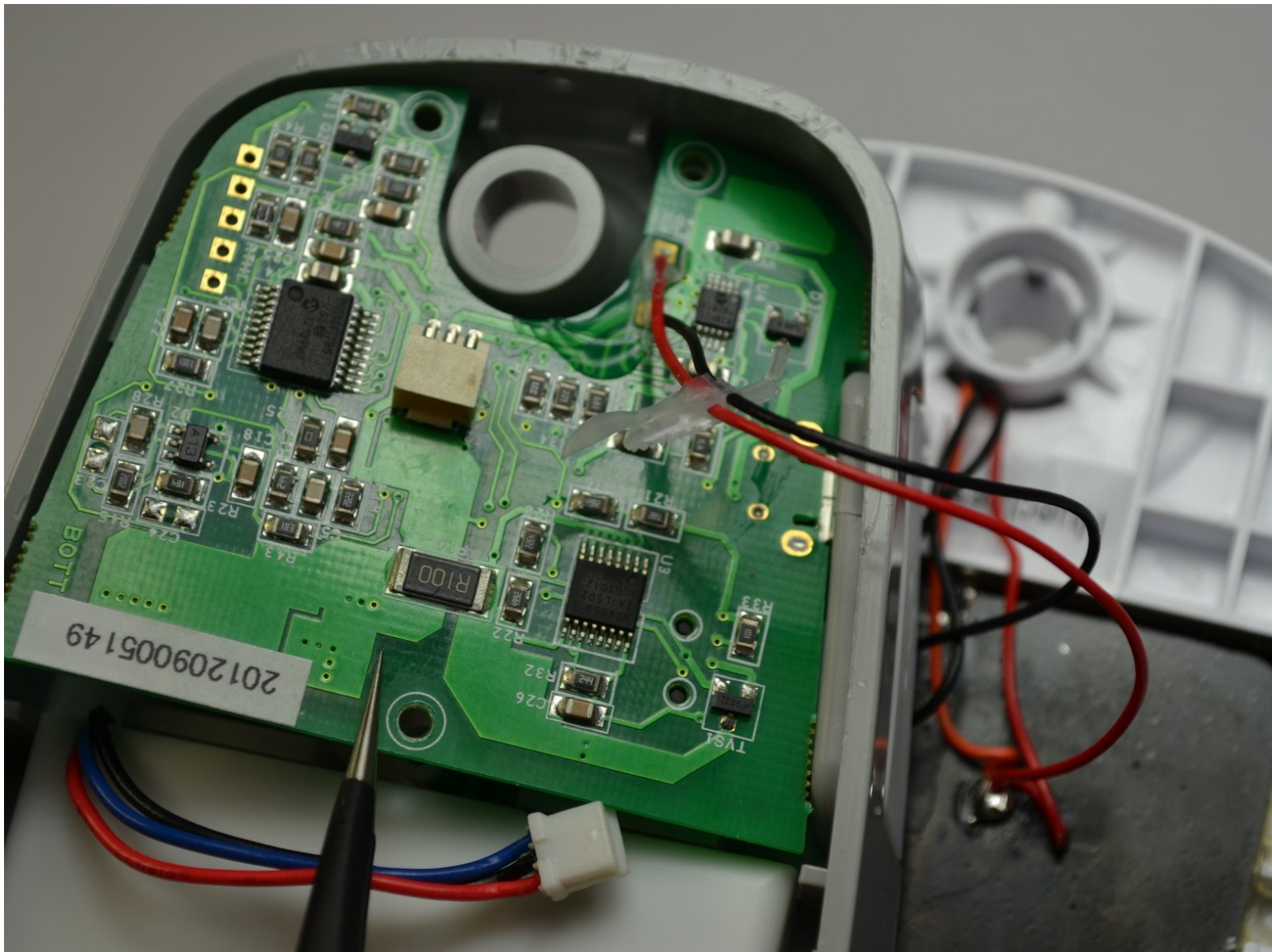




# Solio CLASSIC2 Removing the Circuit Board

This guide will help you disconnect the circuit board from the device. This is a prerequisite guide.

Written By: Eric Padilla



---

## INTRODUCTION

Removing the circuit board will allow you to more easily solder on the circuit board.

---



### TOOLS:

- [Phillips #1 Screwdriver](#) (1)
  - [iFixit Opening Tools](#) (1)
  - [Tweezers](#) (1)
-

## Step 1 — Disconnecting the Battery



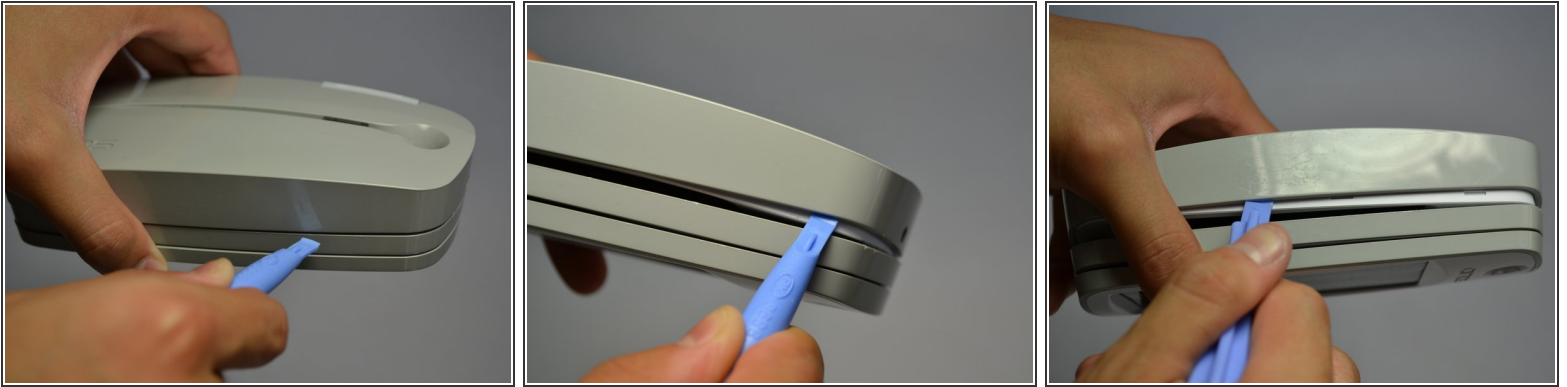
- Turn off the device by pressing on the clear power button behind the device.
- ⓘ To make sure that it is off, make sure the button is not flashing green.

## Step 2



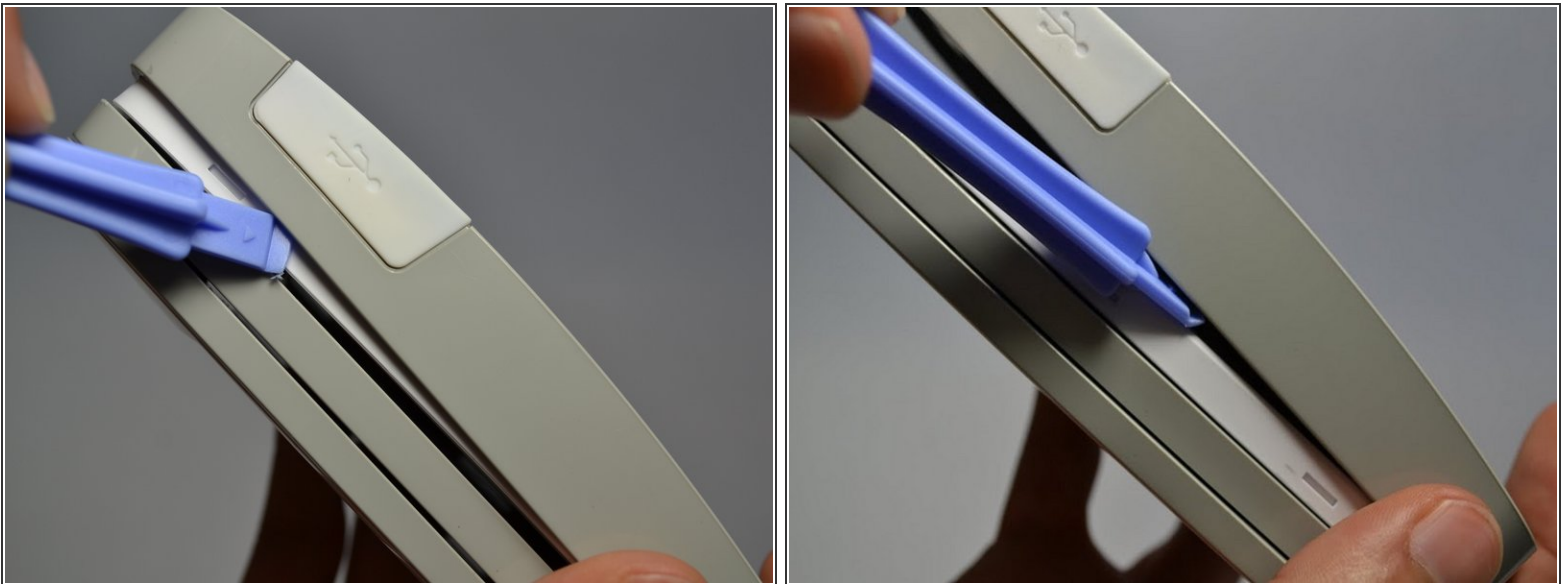
- Using the Phillips #1 screwdriver, remove the 2mm screw located on the bottom of the device, near the hinge.

### Step 3



- Using the plastic opening tools, gently pry open the side of the large panel.
- Keeping the tool in, slowly slide the tool along the side of the panel.

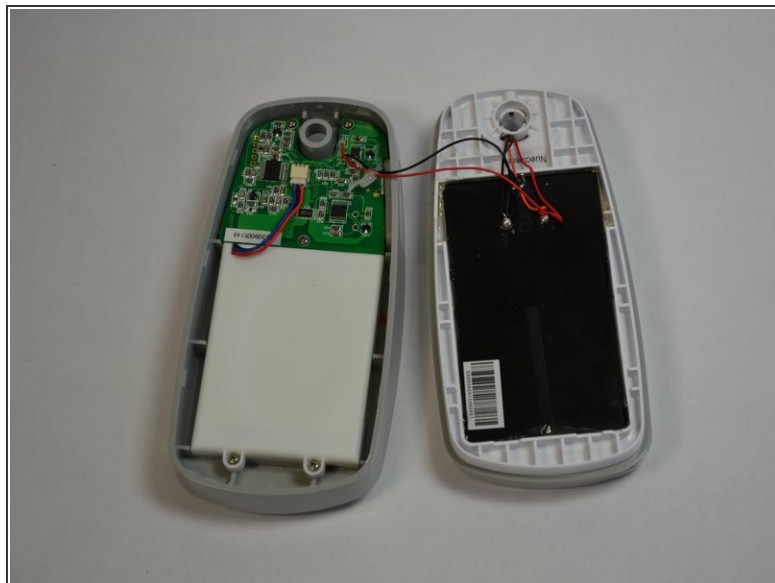
### Step 4




- Rotate the device 180 degrees.
- ⓘ Make sure the opening on other side of the device does not snap closed.
- Gently slide the plastic opening tool along the side of the panel.



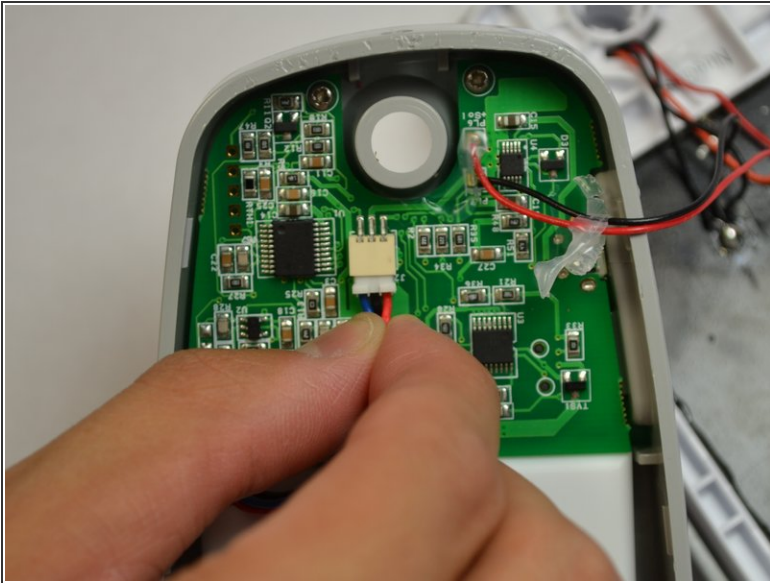
## Step 5



 Do not fully pull apart the back panel from the device. Doing so can rip the two red and blue wires attached to the panel.

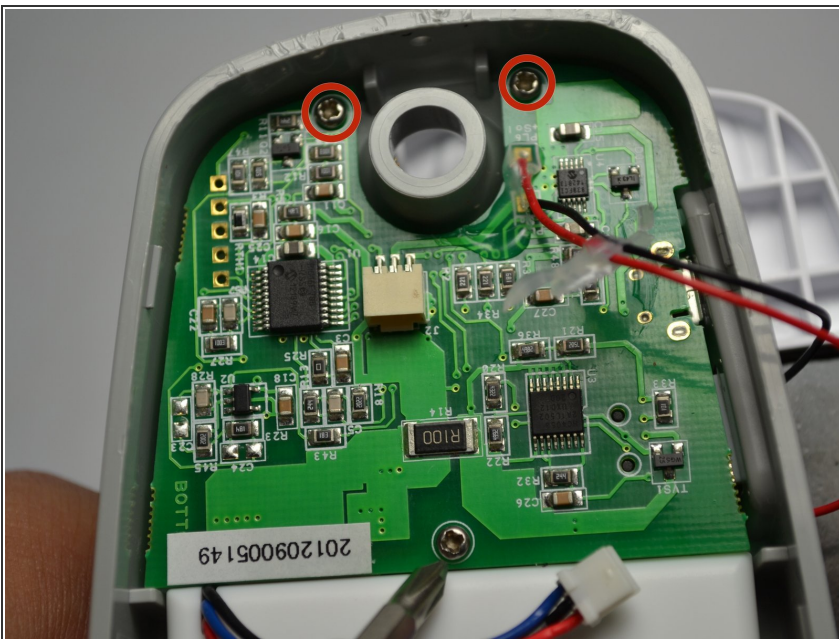
- Using both hands, slowly pull apart the back panel from the rest of the device.
- Gently flip the back panel open so the circuit board faces up and the two panels are side by side.

## Step 6



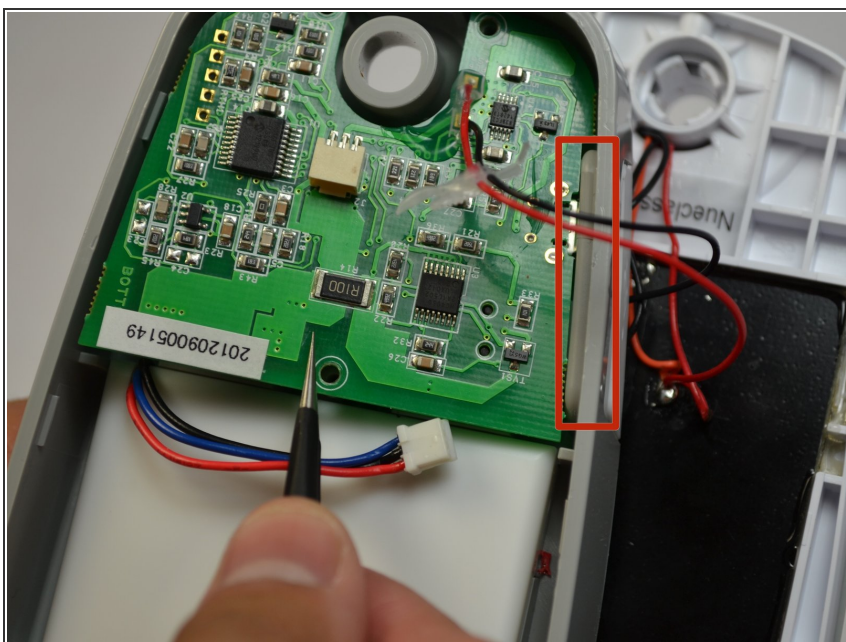
- Softly pinch the red and blue wires close to the white connector.
- To pull the wires out, wiggle them back and forth until the connector is fully out.

## Step 7 — Circuit Board



- Unscrew the three 2mm screws holding the circuit board down using a Phillips #1 screwdriver.

## Step 8



- Make sure the white USB port cover on the side of the device is pulled out or you won't be able to lift the circuit board.
- Gently lift the circuit board out of the device using tweezers.

To reassemble your device, follow these instructions in reverse order.