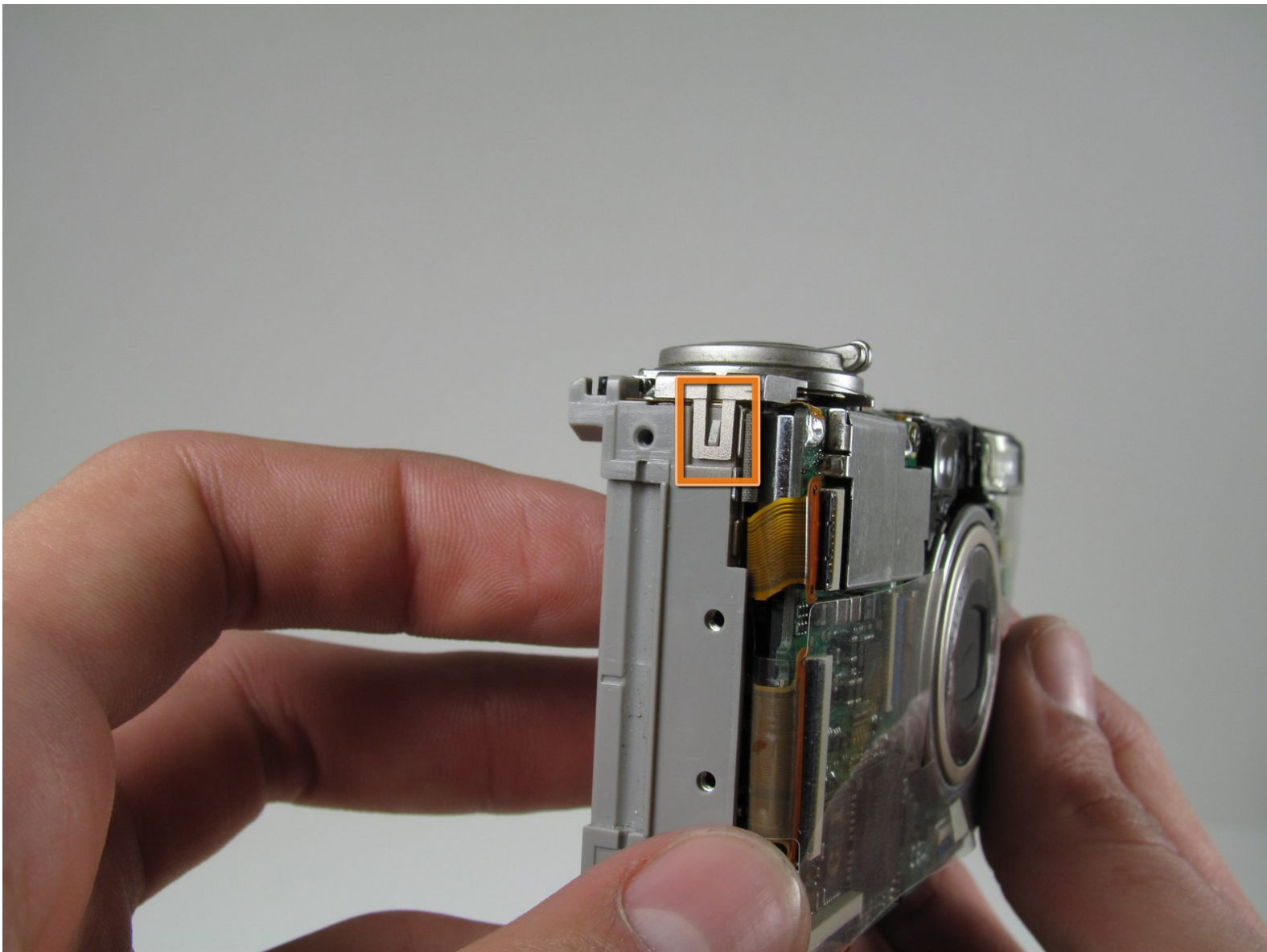




# Canon PowerShot S500 Logic Board Replacement

Written By: Nathan Balcom



---

# INTRODUCTION

This is a guide to removing the camera's logic board.



## TOOLS:

- [Phillips #0 Screwdriver](#) (1)
  - [Solder](#) (1)
  - [Soldering Iron](#) (1)
  - [Spudger](#) (1)
  - [Tweezers](#) (1)
-

## Step 1 — Front and Rear Casing



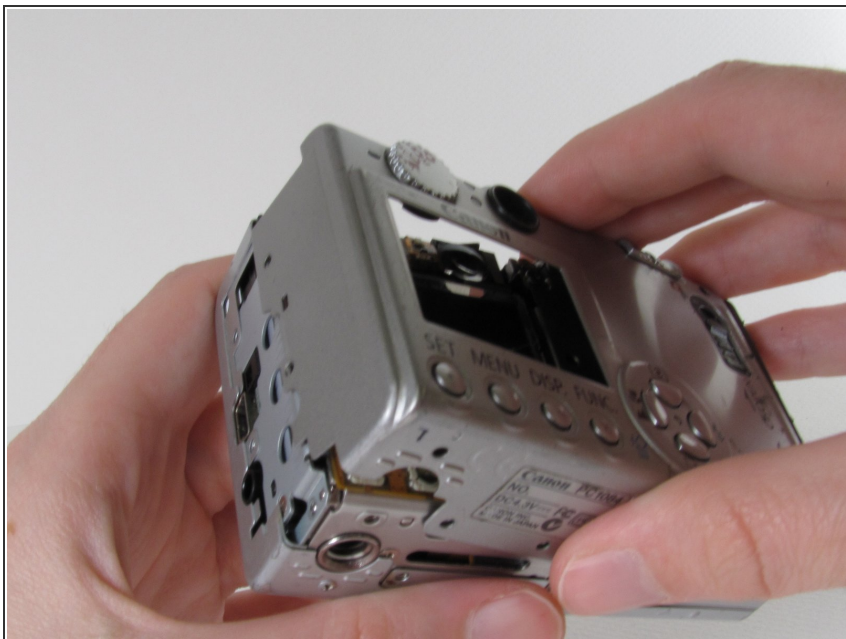
- Unscrew five Phillips screws using a #0 Phillips screwdriver.
- ❗ One screw is on upper right corner of the back panel.
- ❗ The other four screws are on the bottom of the camera.

## Step 2



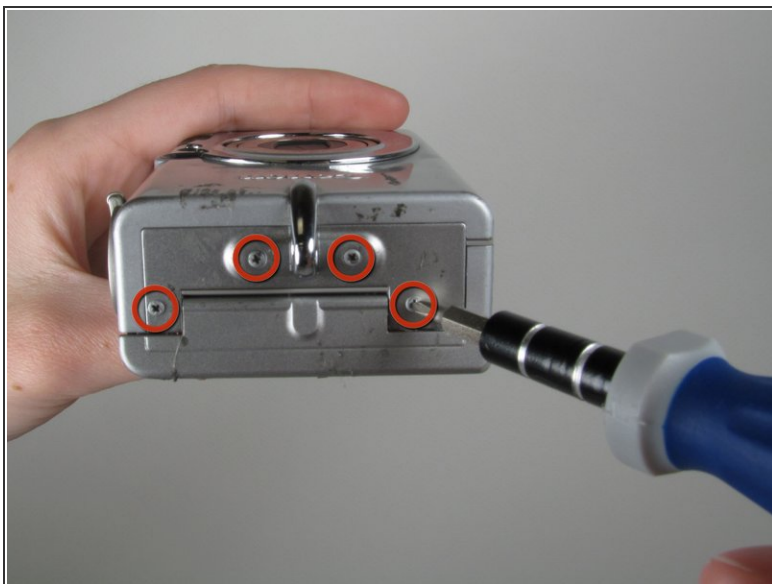
- Open the memory card cover by moving the slide switch toward the top end of the camera.
- Remove the memory card from the slot.

### Step 3



- Remove the rear cover from the rest of the camera.
- ⓘ This may require gentle rocking of the case to free it.

### Step 4



- Unscrew the four Phillips screws from the side of the casing and one screw from the bottom using a #0 Phillips screwdriver.

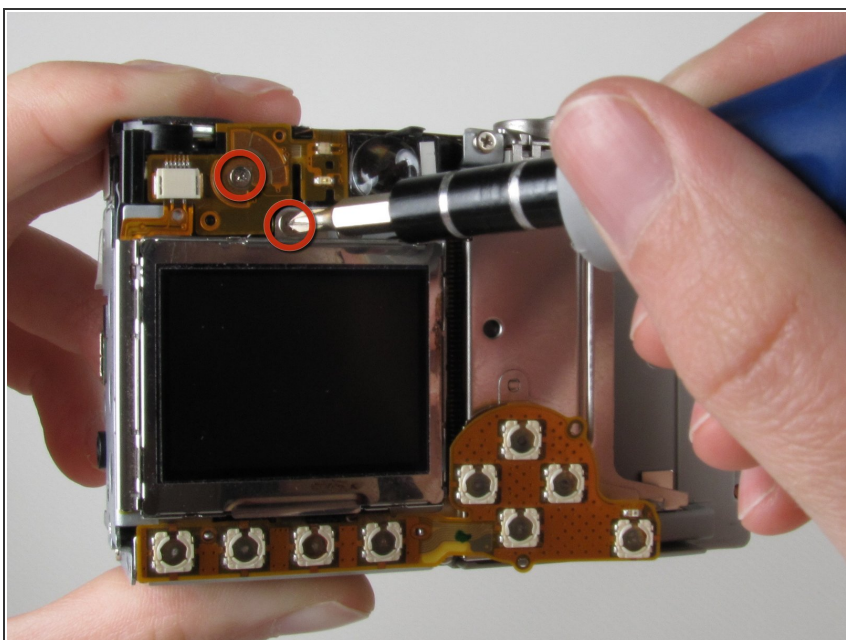


## Step 5



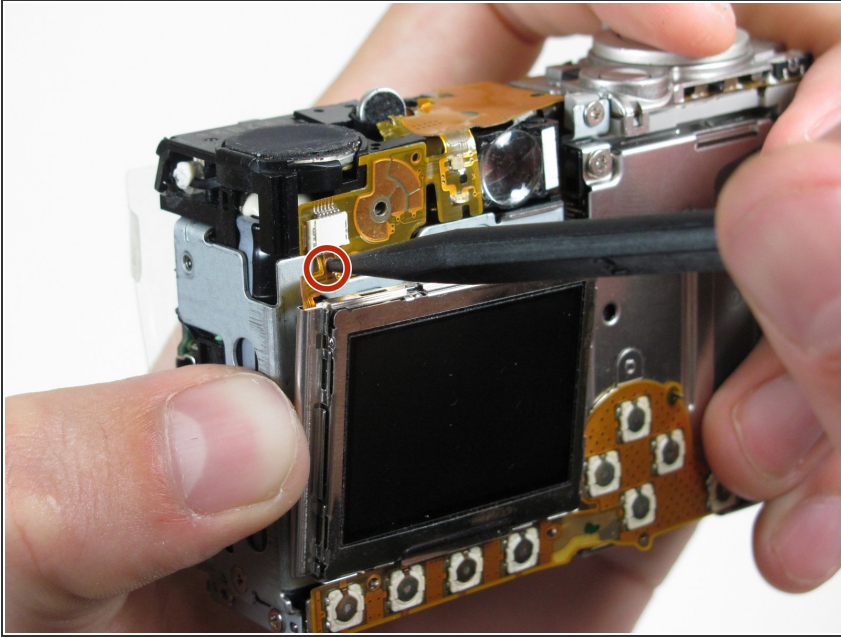
- Free the front cover from the rest of the camera.
- ⓘ The cover may require gentle rocking to remove.

## Step 6 — LCD



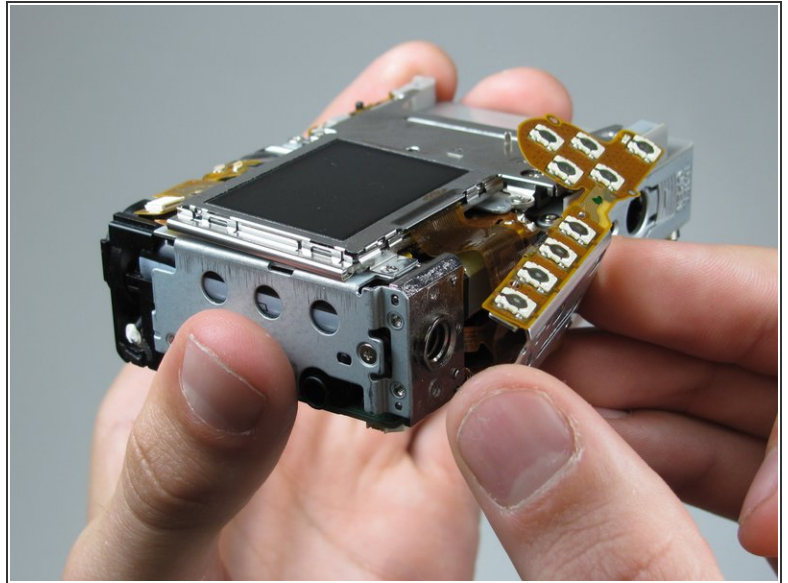
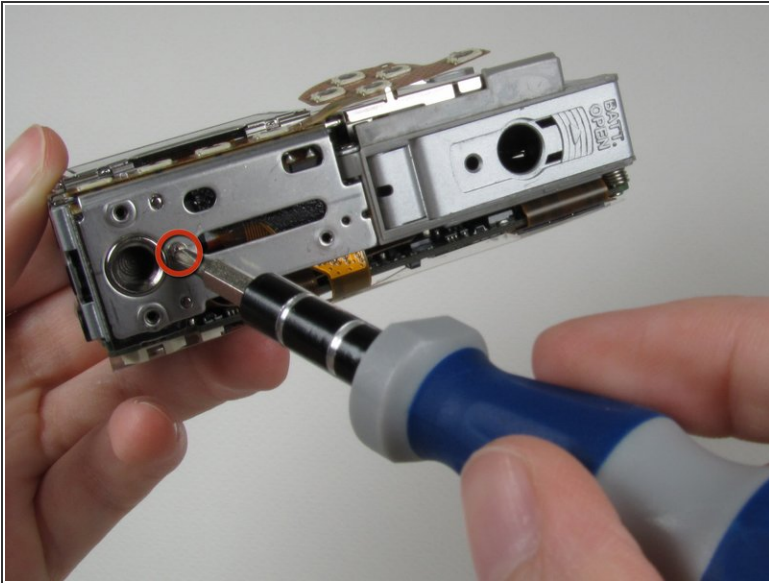
- Unscrew two Phillips screws above the LCD using a #0 Phillips screwdriver.

## Step 7



- Gently separate the top of LCD from the rest of the camera using your thumb.
- ⚠ Be careful not pull the LCD too far because of the ribbon cable connection.
- Place the Spudger in the hole of the electrical ribbon.
- Gently pull the ribbon down using the Spudger until it is free from the camera but still connected to the LCD.
- ⓘ The LCD will still be connected to the rest of the camera

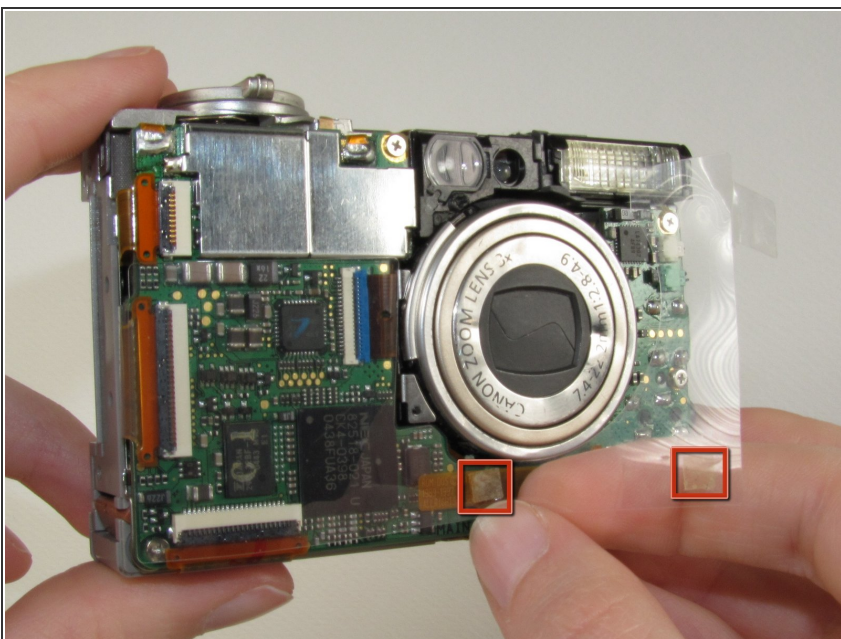
## Step 8



- Unscrew single Phillips screw with a #0 Phillips screwdriver.
- Free the bottom panel and attached ribbon from the rest of the camera.

⚠ Be careful not to damage the ribbon.

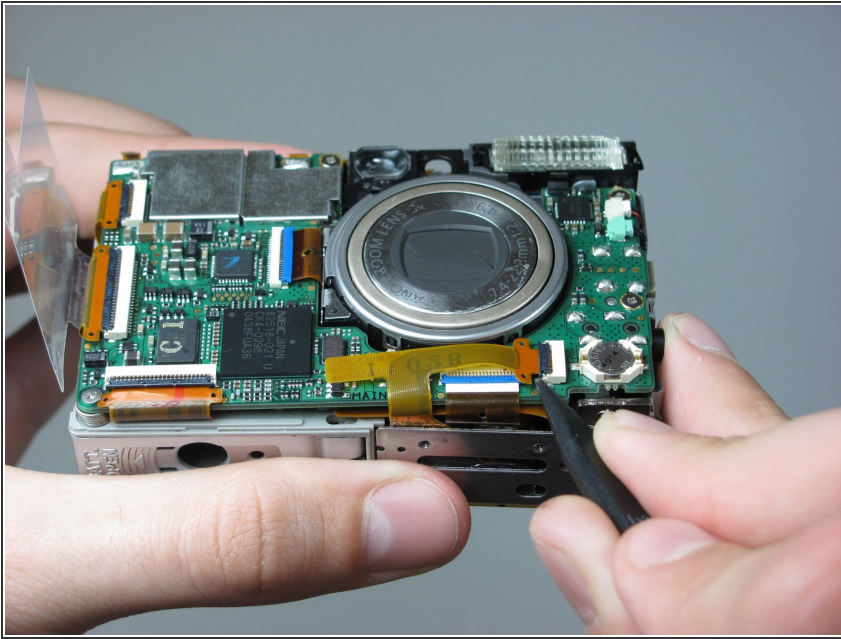
## Step 9



- Turn over the camera.
  - Lift the clear plastic from the face of the camera, peeling the adhesive just below the zoom lens.
- ⓘ The plastic will still be connected on the left side.

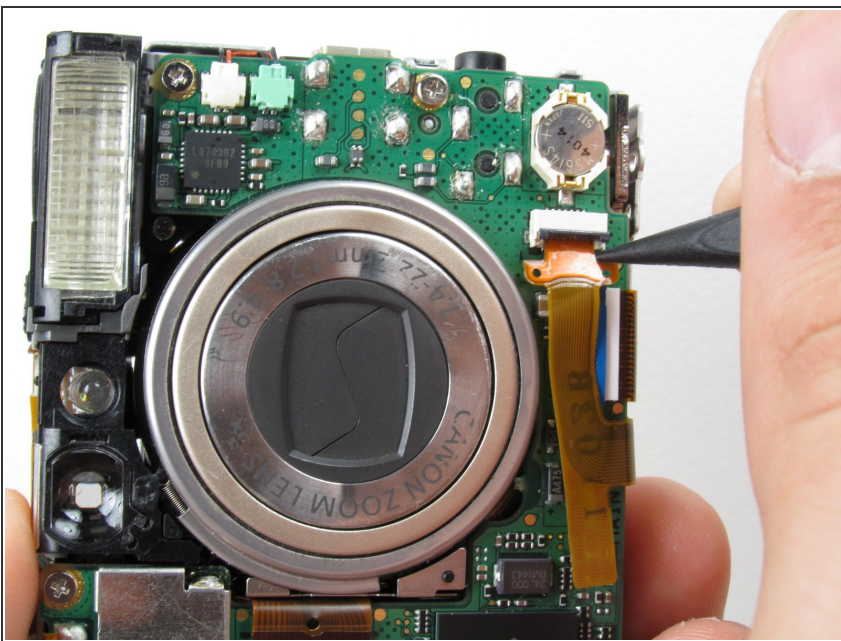


## Step 10



- Place the Spudger between the orange ribbon and the black ribbon gate.
- Lift the ribbon gate using the Spudger.

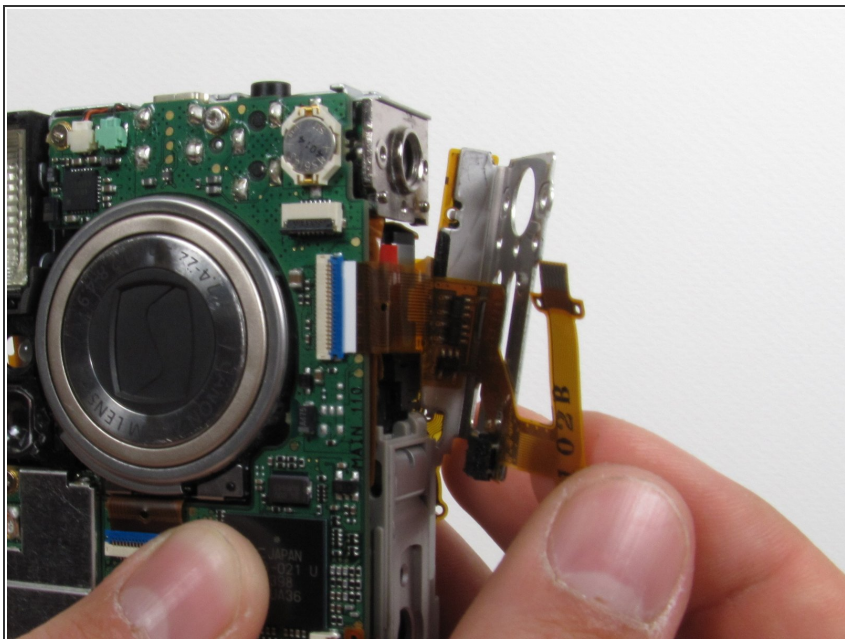
## Step 11



- Place the Spudger in the corner of the ribbon above the hole.
- Remove the ribbon from the ribbon gate by pulling the Spudger away from the gate.

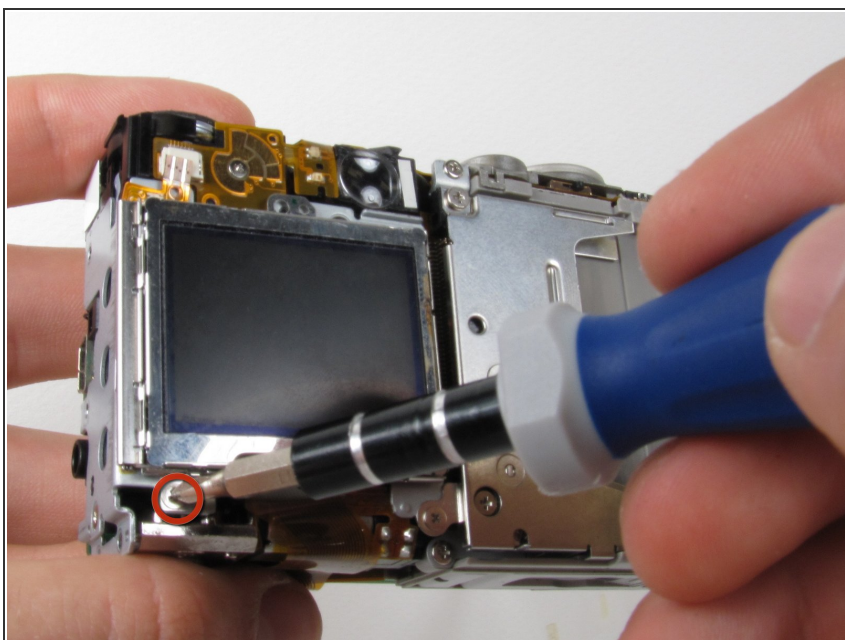


## Step 12



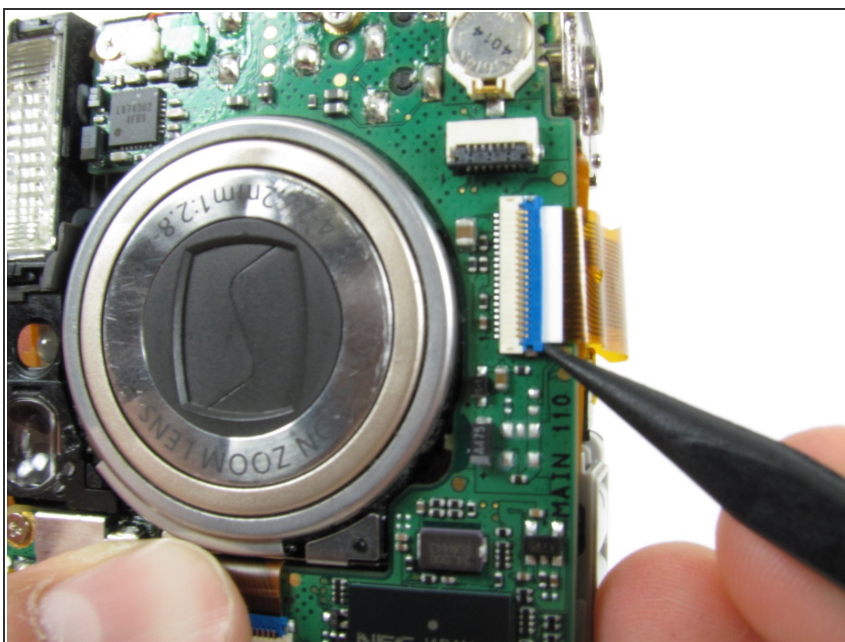
- Free this ribbon and the bottom panel from the rest of the camera.
- ⚠ Be careful not to damage the ribbon.

## Step 13



- Turn the camera over so you can see the LCD.
- Remove single Phillips screw below the LCD using a #0 Phillips screwdriver.

## Step 14



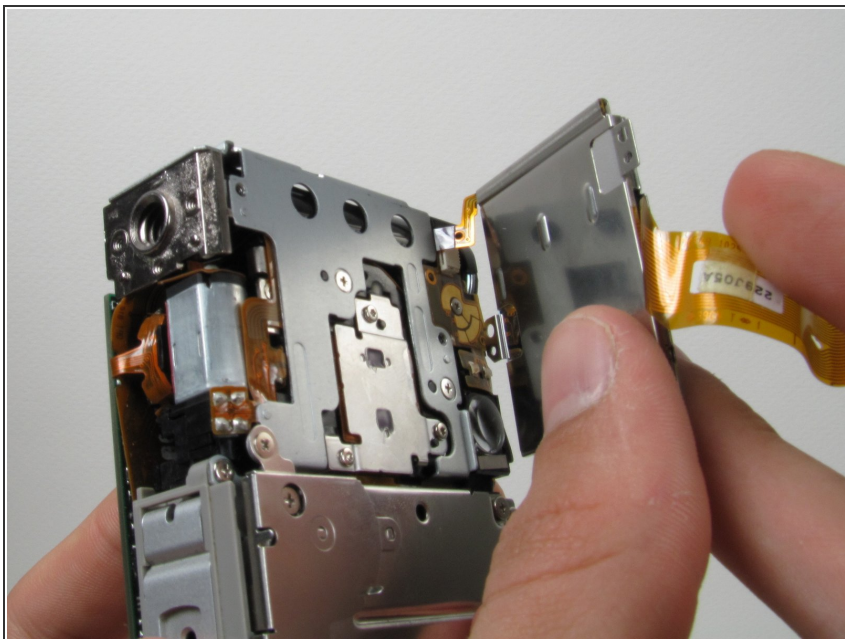
- Lift the blue ribbon gate using the Spudger.

## Step 15



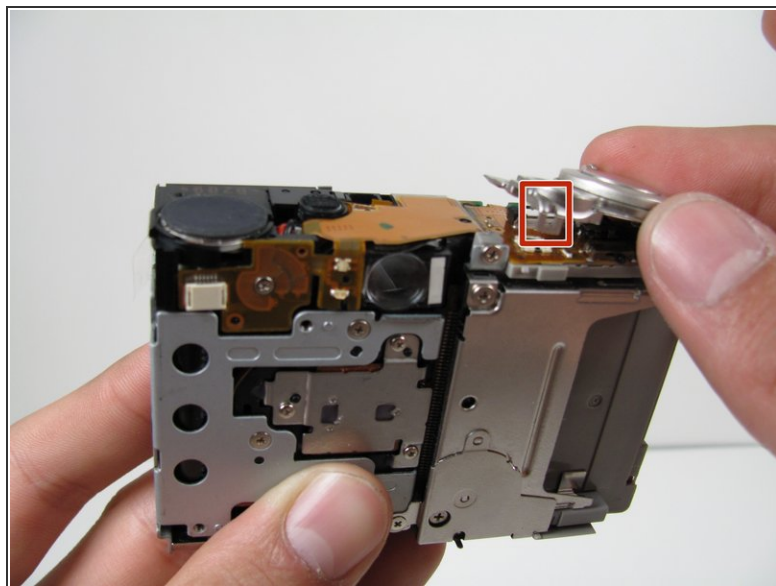
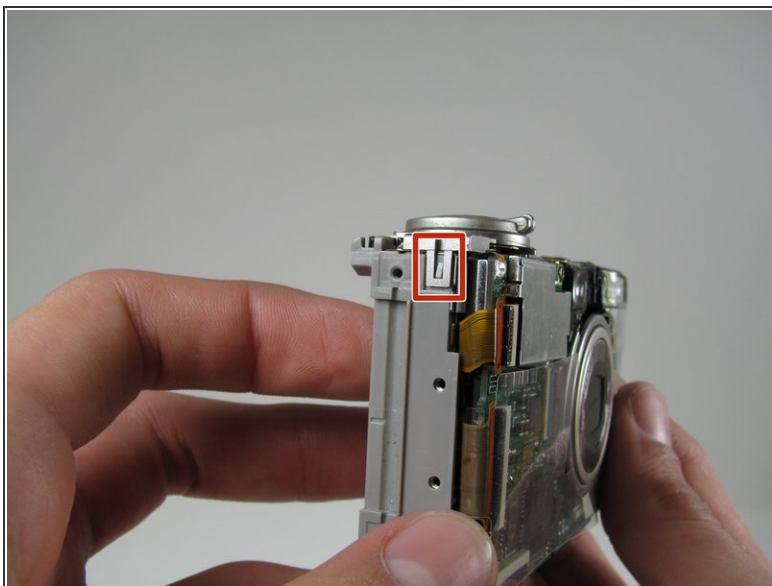
- Insert the Spudger into the hole of the ribbon.
  - Move the Spudger away from the gate to fully remove ribbon.
- ⚠ Be careful not to damage the ribbon.

## Step 16



- Lift the LCD away from the rest of the camera.

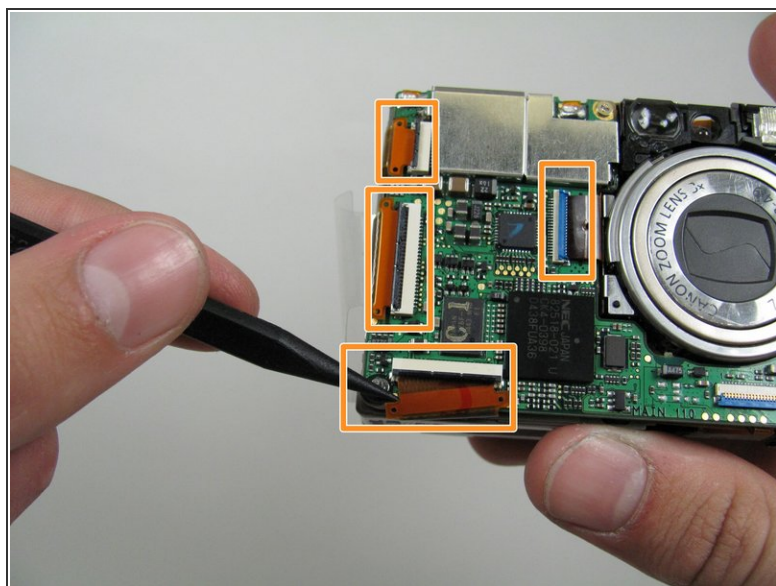
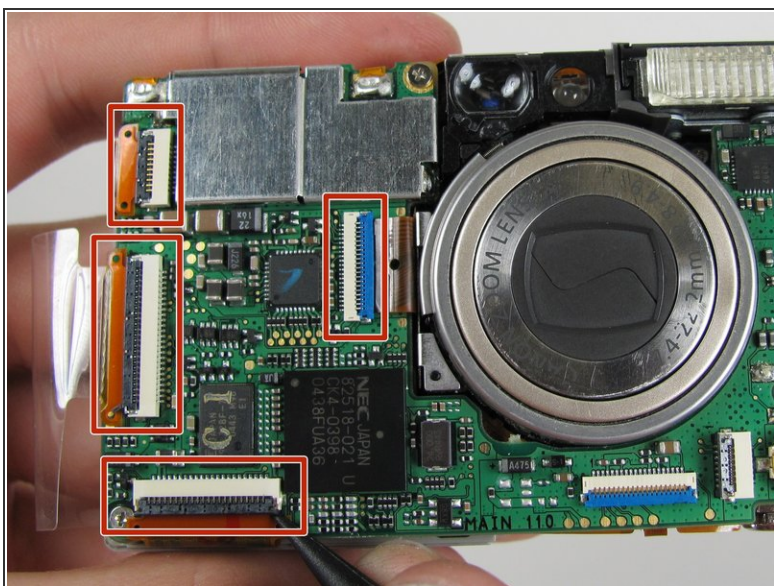
## Step 17 — Logic Board



- Lift off the capture button by wiggling it back and forth while pulling upward.
- Be careful not to damage the two clips.



## Step 18



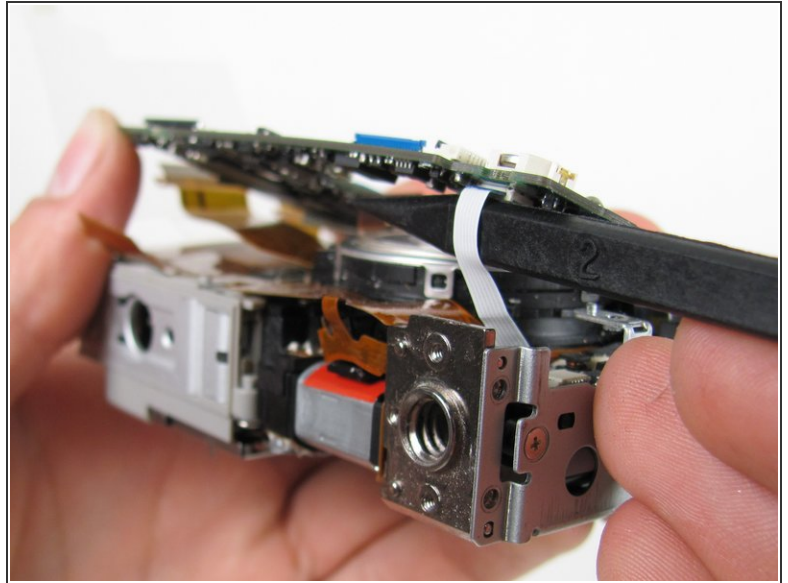
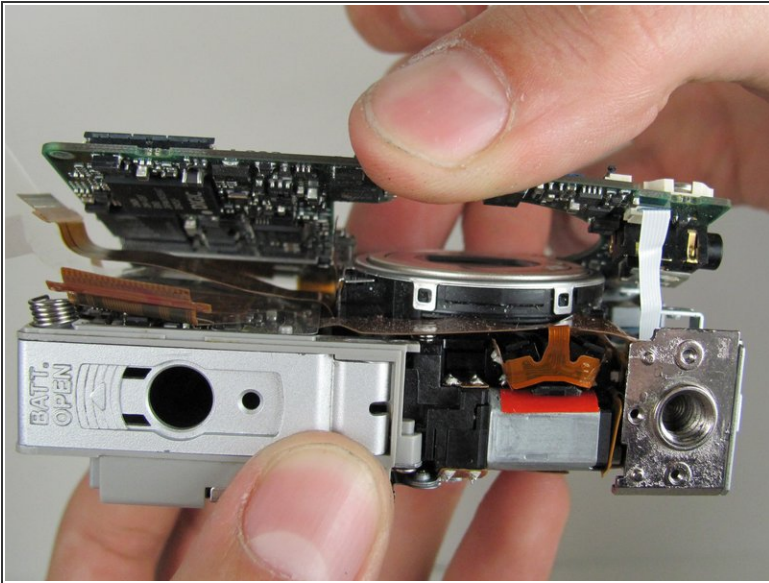
- Flip open the four ribbon gates using the Spudger.
- Gently pull out the ribbon cables from the gates using the Spudger.

## Step 19



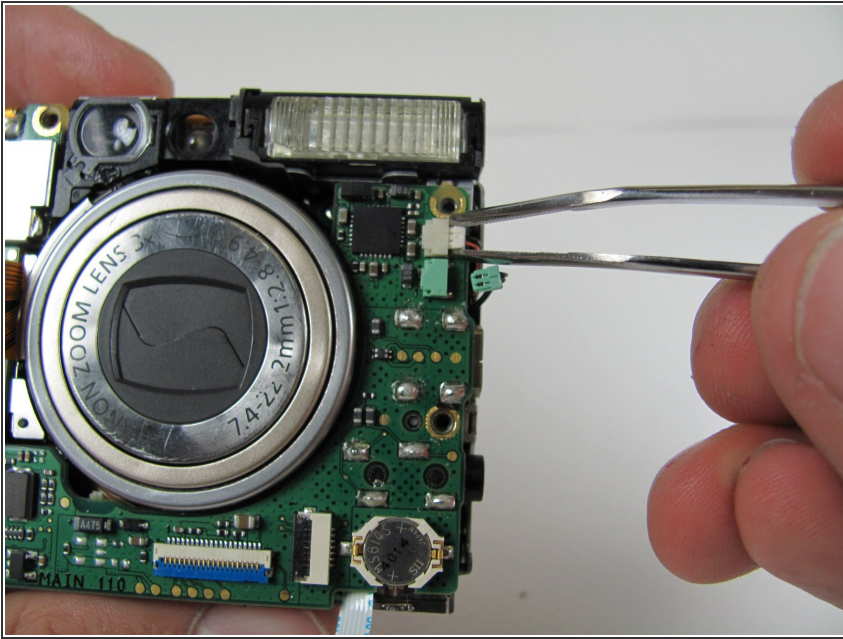
- Unscrew the four Phillips screws using a #0 Phillips screwdriver.

## Step 20



- Gently lift the logic board.
- ⚠ Be careful not to pull too hard and damage the white ribbon cable.
- Place the Spudger so that it is between the logic board, the white ribbon cable, and the rest of the camera.
- Remove the white ribbon cable by pulling the Spudger away from the camera, keeping it parallel to the logic board.

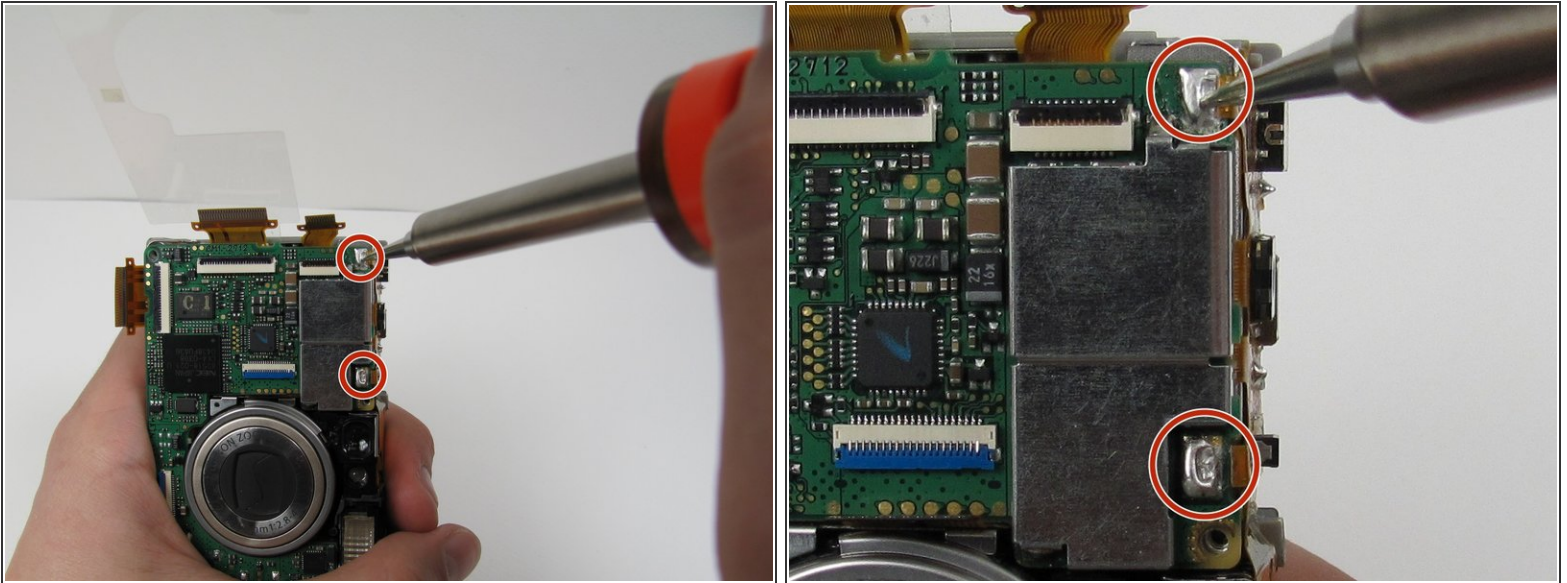
## Step 21



- Lay the logic board back down so that it is resting on the body of the camera.
- Pull the two plugs (white and green) out to the right from the logic board using the tweezers.

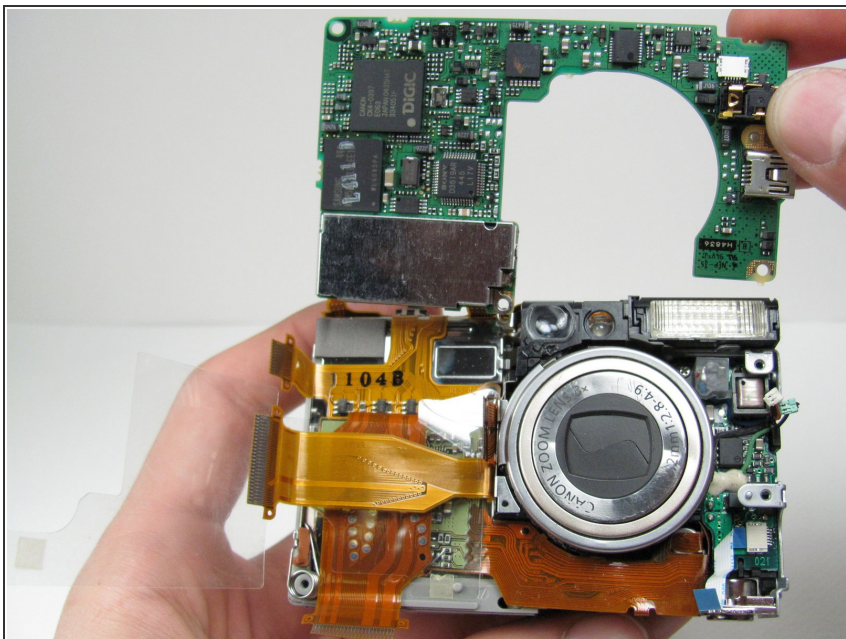


## Step 22



- i** We're now ready to begin the desoldering process. You'll need a soldering iron, solder, and desoldering wick. You should be able to find these items at a Radio Shack if you don't already have them.
- !** Please do not perform this step if you are not comfortable or have previous experience with soldering. Doing so, could cause severe damage to your camera.
- Desolder the two soldered ribbon cables attached to the logic board.

## Step 23



- Free the logic board from the rest of the camera.

To reassemble your device, follow these instructions in reverse order.