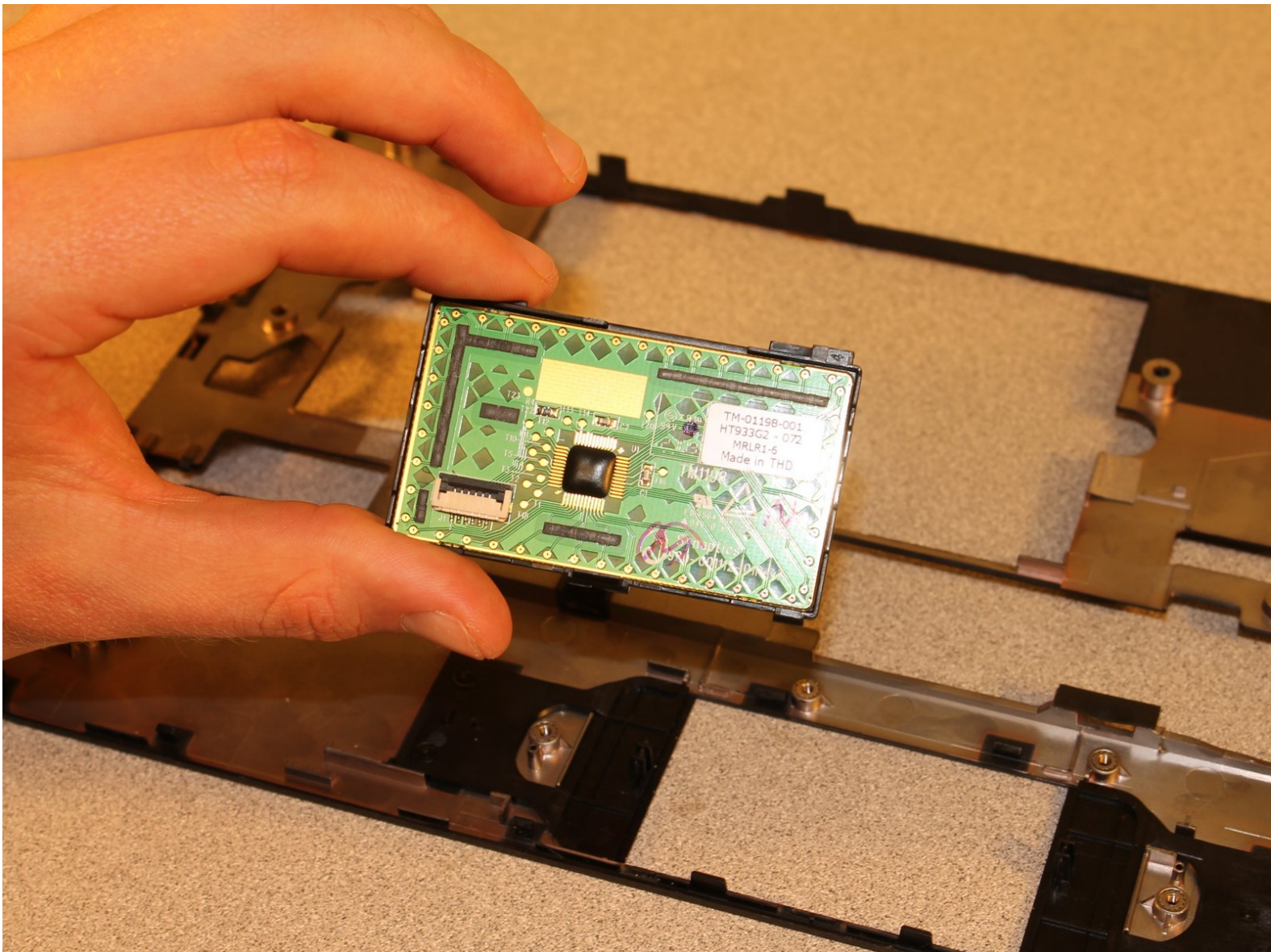




HP Mini 110-1046NR Touchpad Replacement

This guide will demonstrate how to replace the touchpad

Written By: Jared Cooper



INTRODUCTION

This guide replaces the touchpad. In order to replace the touchpad, the keyboard and keyboard bezel must be disassembled as well.

TOOLS:

- [Phillips #0 Screwdriver](#) (1)
 - [Phillips #00 Screwdriver](#) (1)
 - [Phillips #1 Screwdriver](#) (1)
 - [Spudger](#) (1)
-

Step 1 — Battery



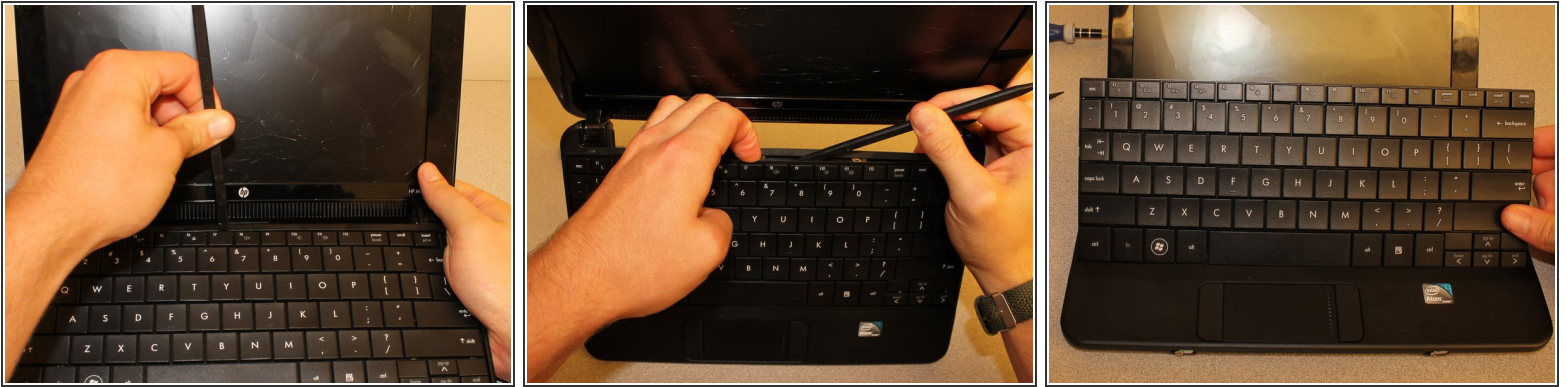
- Power-off the netbook fully before attempting to remove the battery.
- Flip your netbook upside down, and locate the sliding tabs near the battery.
- Slide both tabs inward so that the battery visibly moves away from the case of the computer.
- Release the tabs and pull the battery out.

Step 2 — Keyboard



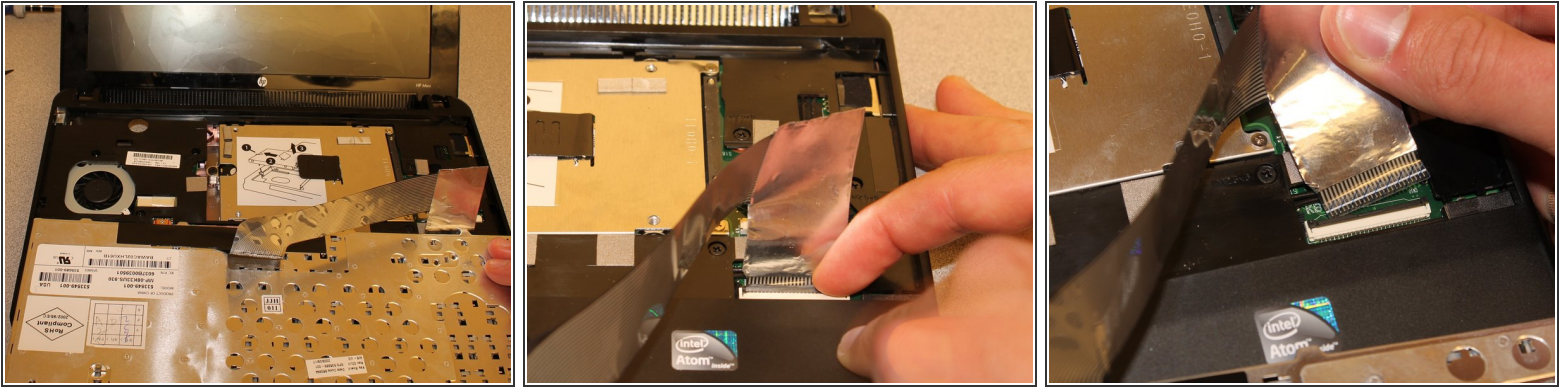
- With the screen closed, turn your netbook around so that the battery slot is facing you.
- Remove the three 2.9mm screws in the battery slot.
 - This step can be made easier by using a magnetic screwdriver.

Step 3



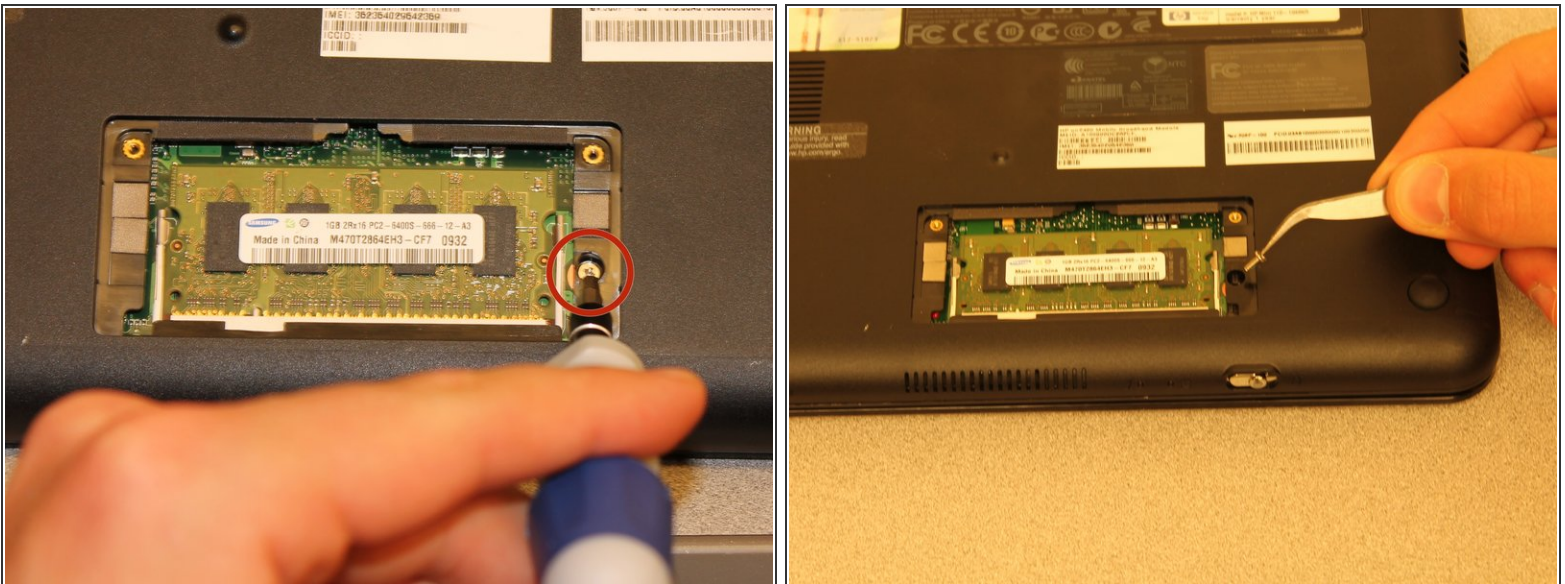
- Flip the netbook upright, and open the screen as far as it will go.
 - Pry up the keyboard from the middle of the top edge.
 - Insert the flat end of the spudger between middle of the the top edge of the keyboard and the plastic frame behind it.
 - Pry the keyboard up until it pops out or until you can grab it with your fingers, and then pull gently until it pops out on both sides.
- ⚠ Do not pull the keyboard out immediately - there is a potentially fragile ribbon cable that attaches to the motherboard behind the keyboard.

Step 4



- Flip the keyboard over (toward you) by pivoting it about the lower edge, and lay it upside down on top of the touchpad area to reveal the ribbon cable.
- Lightly pull up on the black tab on top of the keyboard ribbon cable until it hinges toward you and releases the ribbon cable end.
- Pull the ribbon cable backward and out of the receptacle. This should not require any effort.

Step 5 — Keyboard Bezel



i It is not necessary to remove the memory card for this step.

- Remove the 4.9mm screw located to the right of the of the memory card using a PH1 screwdriver.

Step 6



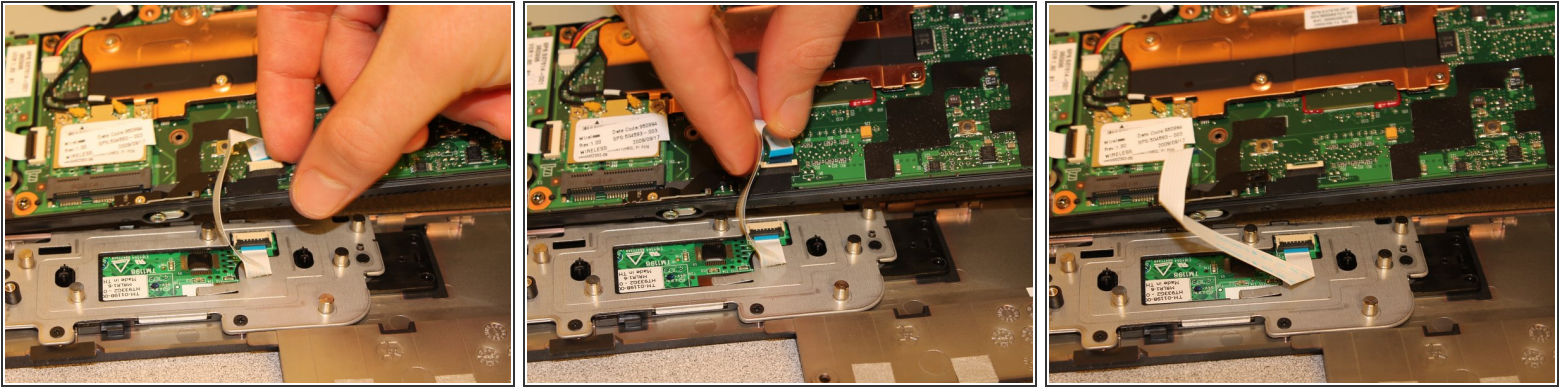
- Pry the four feet with the pick-end of the spudger. These are glued down, so this may require some force.
- Remove the 6mm PH1 screws located under each foot.

Step 7



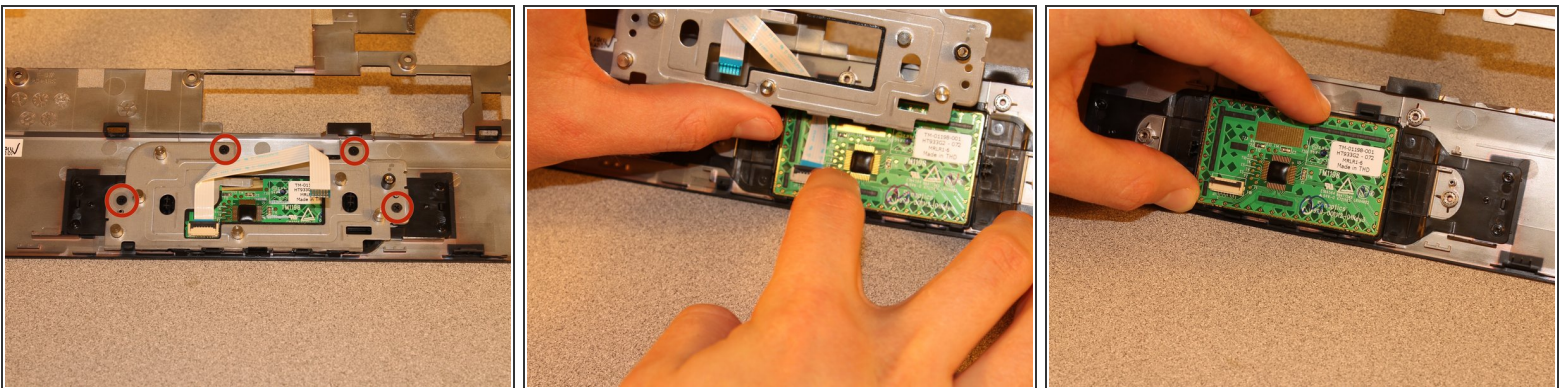
- Flip the netbook over and remove with a PH1 screwdriver the eight 5.9mm screws that secure the keyboard bezel in place.
 - ⓘ Only remove the black screws with "M2.5x6" markings next to them. All others are unnecessary.
- ⚠ Taking the keyboard bezel off without removing the hard drive may be possible, but there is a risk of breaking several tabs on the keyboard bezel located between the hard drive and the frame of the computer.
- Using the flat end of the spudger or pry stick, pry the keyboard bezel away from the base by wedging the tool between the base and keyboard bezel and run the tool along the side until the cover is fully released.
 - ⚠ Don't pull the front of the keyboard up very far. There is a small, potentially fragile ribbon cable on the back of the touchpad that is still attached to the system board.
- Carefully flip the keyboard bezel over (toward you) to reveal the touchpad ribbon cable.

Step 8



- Locate the black and white tab that connects the touchpad ribbon cable to the motherboard.
- Using your fingernail or a pry stick, flip the white tab up to release the ribbon cable end.
- Remove the touchpad ribbon cable from the receptacle on the system board by gently pulling the ribbon away from the clamp.

Step 9 — Touchpad



- Turn the keyboard bezel around so that the touchpad is closer to you.
- Disconnect the ribbon cable from the receptacle on the touchpad circuit board. The ribbon cable will not fall away because it is glued to the bracket that holds the touchpad in place
- Remove the four 2.9mm screws from the bracket using a phillips PH0 screwdriver.
- To remove the touchpad, simply push the touchpad from the top of the keyboard bezel (the touch-sensitive side, not circuit board side). This should require almost no force.

To reassemble your device, follow these instructions in reverse order.