



# General Electric Bagel Switch 4-Slice Power Supply Replacement

This guide will explain how to replace the power supply cable of the General Electric Bagel Switch 4-Slice toaster.

Written By: Ron Gajdos



## INTRODUCTION

This guide will explain how to replace the power supply cable of the General Electric Bagel Switch 4-Slice toaster.



### TOOLS:

- [Phillips #0 Screwdriver](#) (1)
- [Flush Wire Cutters](#) (1)




### PARTS:

- [wire cap](#) (1)


## Step 1 — Disassembling General Electric Bagel Switch 4-Slice Toaster Outer Case



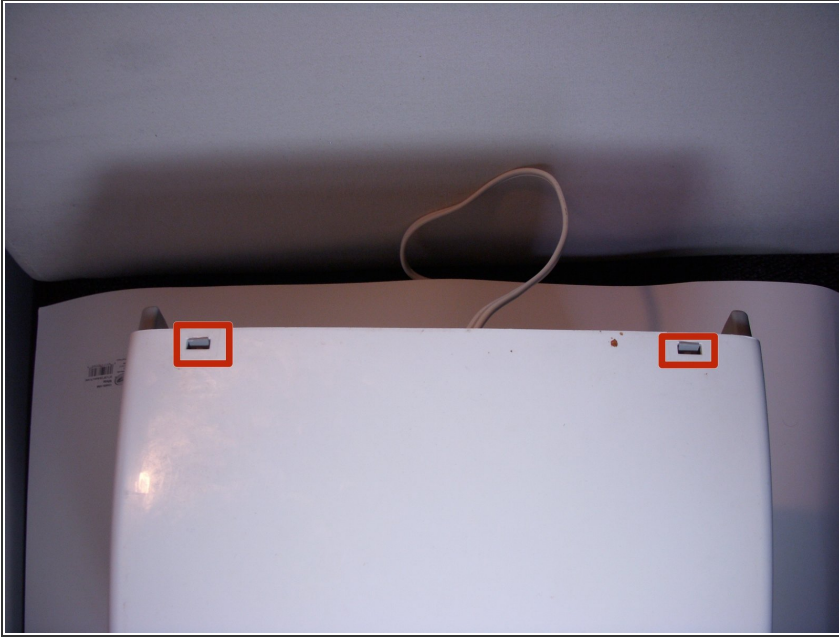
 Unplug the toaster from the electrical outlet.

## Step 2



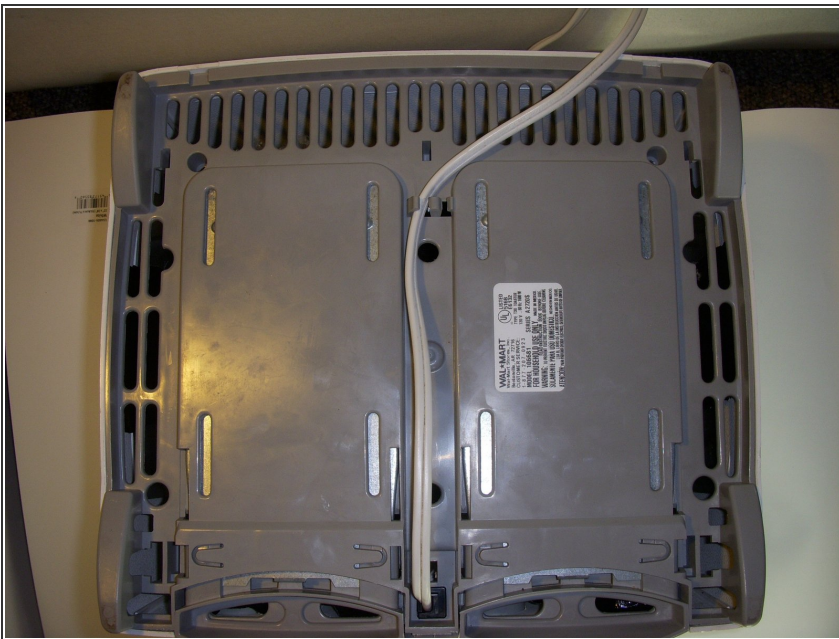
- Remove the two levers and four dials by pulling them out directly towards you.
-  Removing these components may require some force, but they will release.

## Step 3



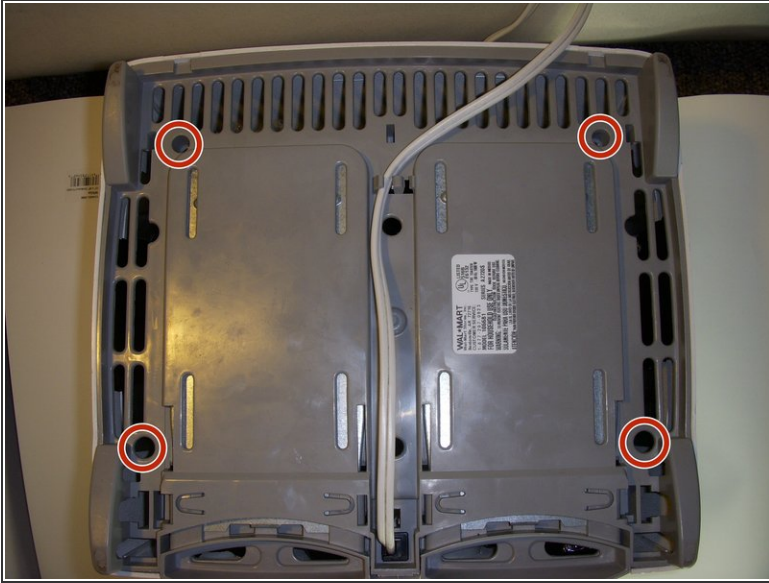
- Look for the plastic clips on the back side of the toaster.
- Disconnect the small plastic clips on the back of the toaster. Use Philips head Screwdriver to do this step.
- Now, carefully remove the toaster casing.

## Step 4 — Power Supply



- Flip the toaster over so that the bottom plate is facing up.

## Step 5



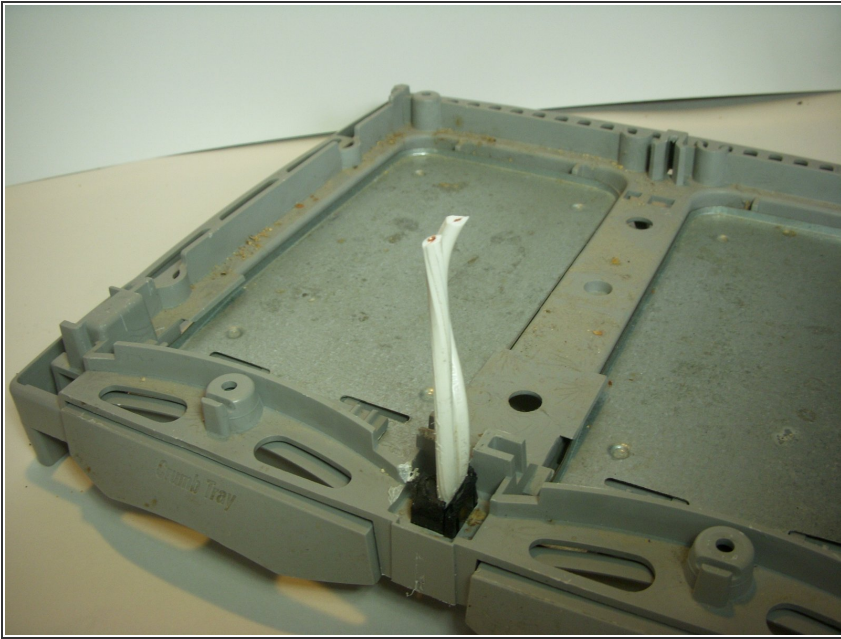
- Remove the four screws from the bottom of the toaster.

## Step 6



- Carefully separate the bottom plate from the metal components inside the toaster.

## Step 7



- Using wire cutters, cut the power supply cable close to the base of the toaster, leave about 2 inches of wire.

## Step 8



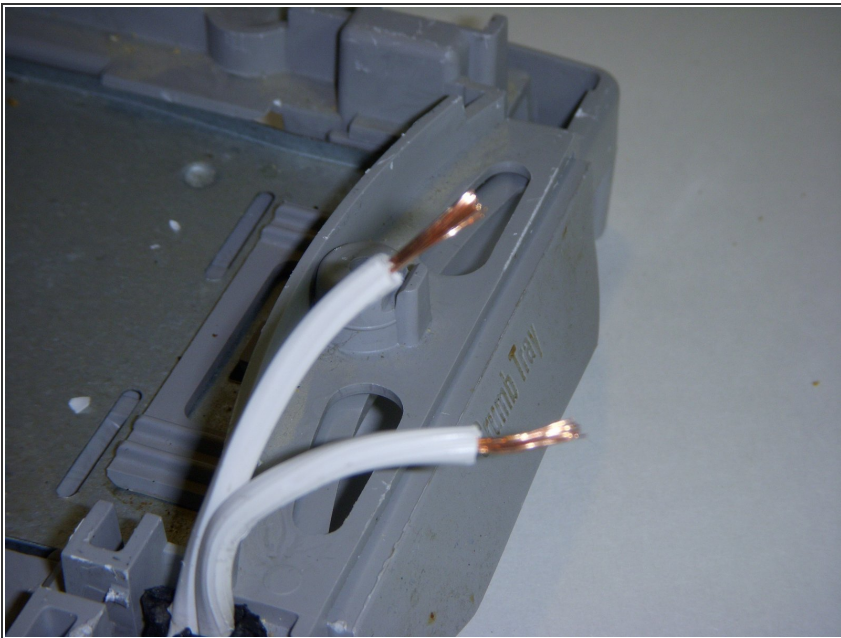
- Pull the power supply cord through the bottom plate of the toaster.

## Step 9



- Insert the end of the new power supply cable through the hole in the bottom plate.

## Step 10



- Strip about an inch of the wire insulation (casing) off the ends of both the new power supply cable, and the old power supply cable that is still attached to the toaster.

## Step 11



- Splice the stripped ends of wire together using a wire cap.

To reassemble your device, follow these instructions in reverse order.