



General Electric Bagel Switch 4 Slice Bottom Plate Replacement

This guide will show you how to replace the Bottom Plate of the GE Bagel Switch 4 Slice.

Written By: Jacqueline Tran



INTRODUCTION

Your GE Bagel Switch 4 Slice has a broken Bottom Plate? Use this guide to replace the part yourself. All you will need is 1 tool and the GE Bagel Switch 4 Slice bottom plate. Follow the directions accordingly. All other inquiries, please submit to the GE company website.



TOOLS:

- [Phillips #0 Screwdriver](#) (1)




PARTS:

- [Screws](#) (1)


Step 1 — Disassembling General Electric Bagel Switch 4-Slice Toaster Outer Case



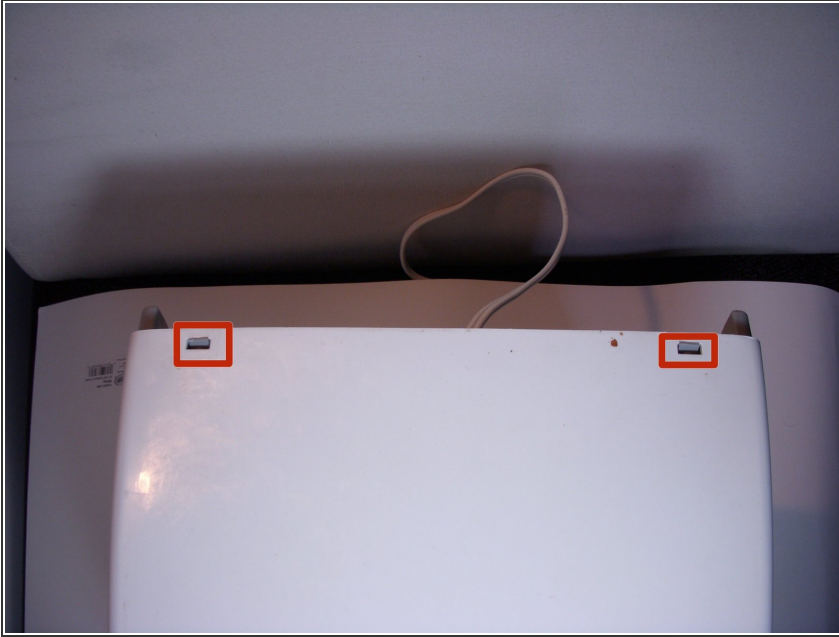
 Unplug the toaster from the electrical outlet.

Step 2



- Remove the two levers and four dials by pulling them out directly towards you.
-  Removing these components may require some force, but they will release.

Step 3



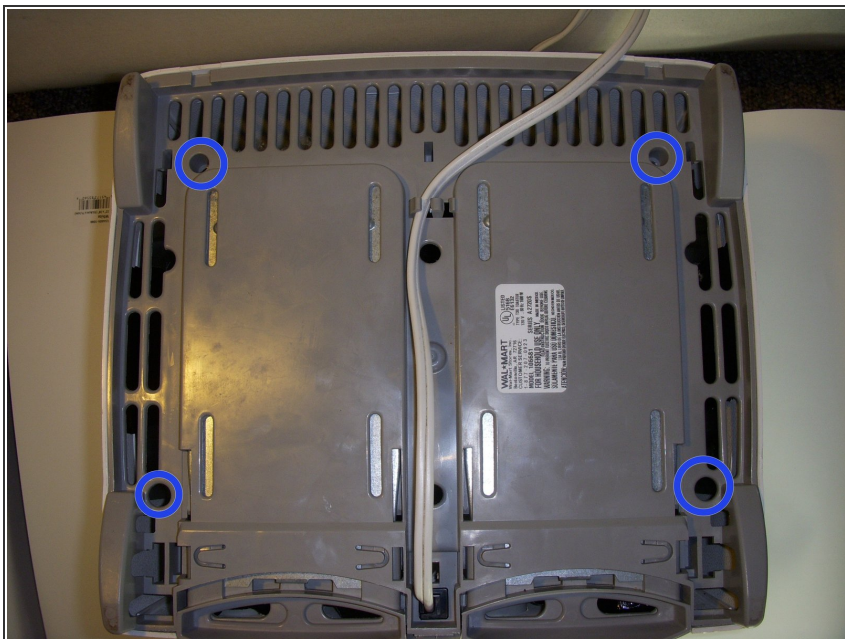
- Look for the plastic clips on the back side of the toaster.
- Disconnect the small plastic clips on the back of the toaster. Use Philips head Screwdriver to do this step.
- Now, carefully remove the toaster casing.

Step 4 — Bottom Plate



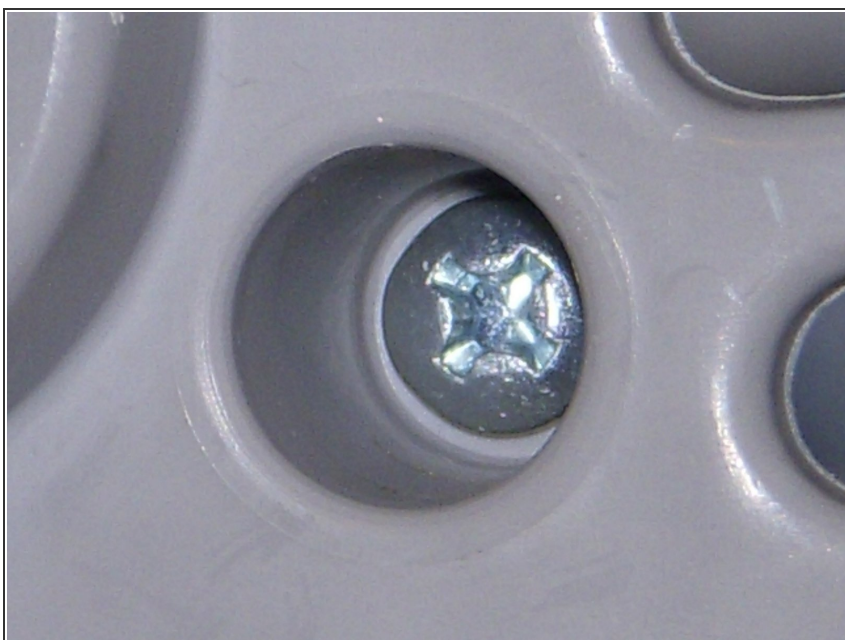
- Turn the toaster upside down. Bagel slots are not showing.

Step 5



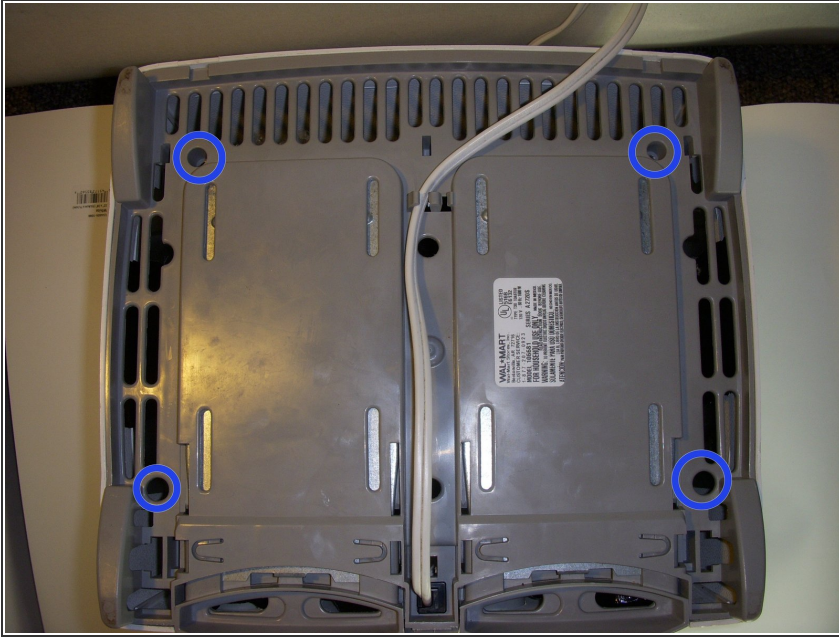
- Locate the screws that are holding the bottom plate onto the toaster. There are four (4) screws. (1 screw in each corner.)

Step 6



- With a Phillips head screwdriver, remove all (4) of the screws.

Step 7



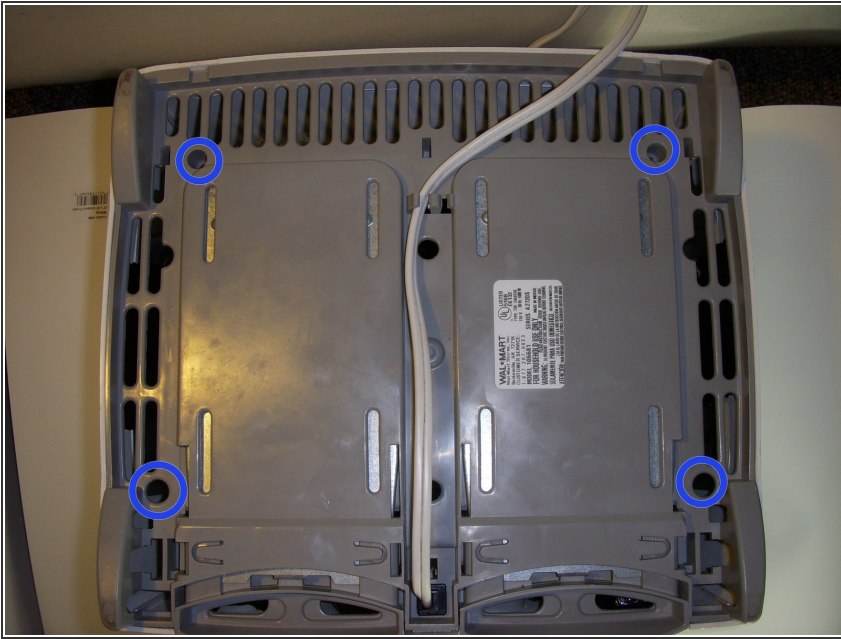
- You will notice that the cord for the plug is also attached to the bottom. You will need to remove it from the bottom plate.
- The bottom plate is now free to be removed.

Step 8



- ⓘ Now that the bottom plate is completely off, you can put the new bottom plate on.
- ⚠ You may damage parts if you do this step incorrectly.
- Start by running the cord around the grooves of the bottom plate. Match up the cord with the same path that you removed the cord from the bottom plate. Make sure it lines up correctly.

Step 9



- Now the bottom plate is in place. Put the (4) four screws that hold it on, back into where you removed them from. Use the screwdriver to do this.
- Once these (4) screws have been tightened, in the correct holes, you have finished replacing the bottom plate.

Step 10



- Turn the toaster right side up. Replacement is now complete.

To reassemble your device, follow these instructions in reverse order.