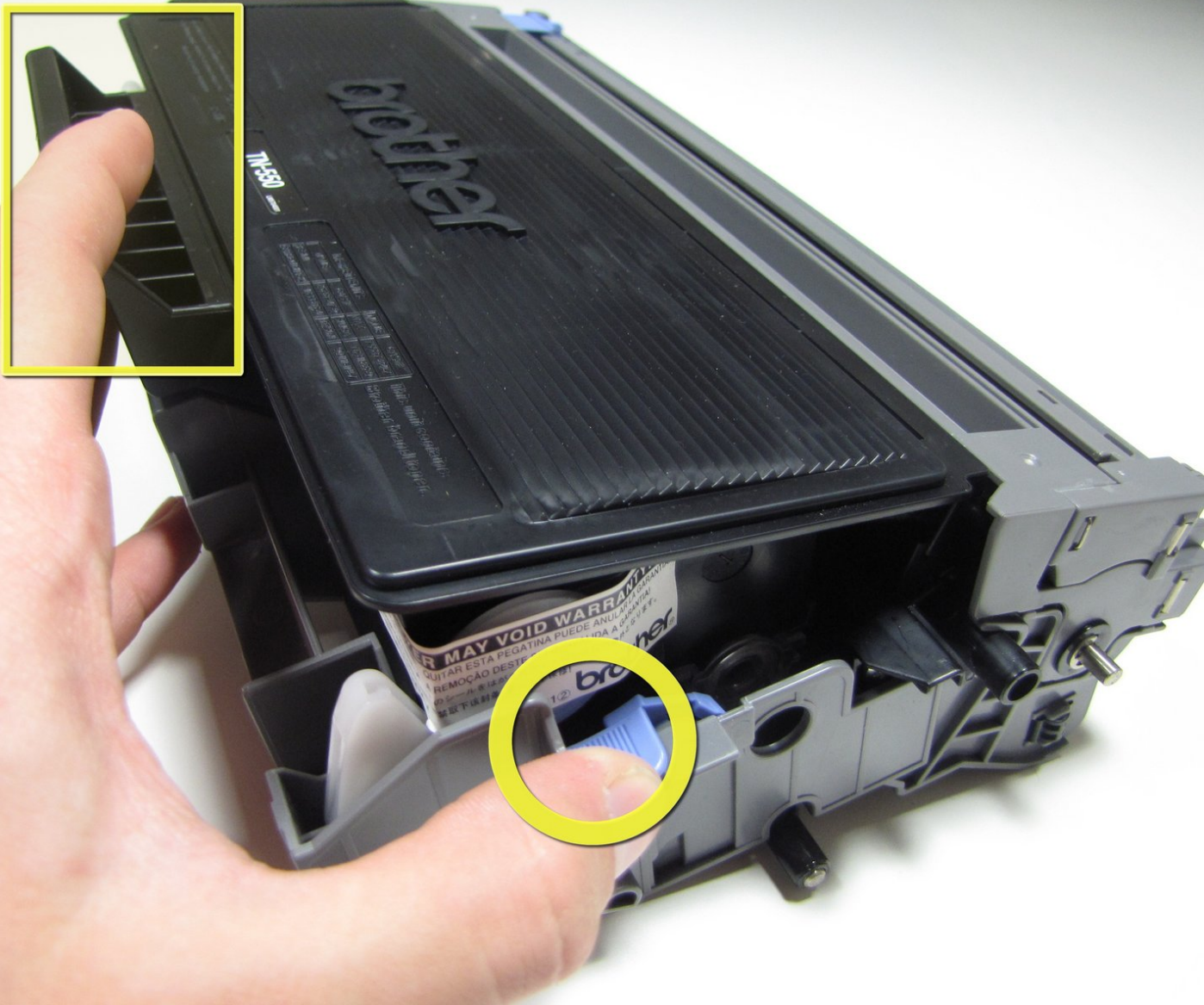




Brother HL-5240 Toner Cartridge Replacement

This repair guide shows how to install a new...

Written By: Tyler Davies



INTRODUCTION

This repair guide shows how to install a new toner cartridge.



PARTS:

- [Compatible Toner Cartridge for Brother HL-5240](#) (1)
-

Step 1 — Drum Unit and Toner Cartridge



- Press the front cover release button.
- Keep the button pressed and pull the cover toward yourself.

Step 2



- With the front cover in the downward position, the drum & toner unit will be visible.
- Grab the black-and-yellow handle on the unit. Lift unit up and pull it out of the printer.

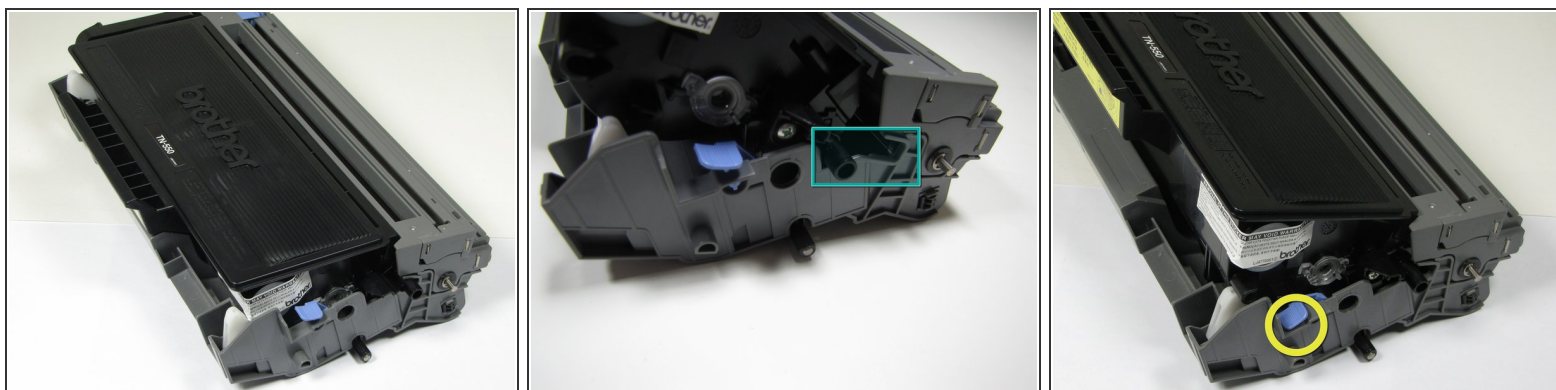
Step 3 — Toner Cartridge



- The drum unit is the gray bottom half of the component in the picture, while the top black part is the toner cartridge.
- Separate the toner cartridge from the drum unit by pressing down on the blue tab and gently lifting the toner cartridge up by the lift on the handle.

⚠ DO NOT TOUCH the roller bar on the toner cartridge, or the roller bar on the drum unit as illustrated in the pictures. This may cause a decrease in print quality.

Step 4



- Insert the toner cartridge into the new drum break by firmly sliding the cartridge into the drum unit. If installed correctly, the blue lever will be locked in a lifted position.
- Be sure that the black nob located on the back of the toner cartridge is placed inside the track located on the drum unit.
- The third picture illustrates an incorrectly installed drum unit and toner cartridge, notice how the blue lever is down.

To reassemble your device, follow these instructions in reverse order.