



# Blackberry Curve 9300 Screen Replacement

Replace faulty screen; lines on screen

Written By: Alek Squires



---

## INTRODUCTION

This guide was written to aid with Blackberry Curve screen replacement. Following the steps below should provide relatively simple means of achieving this goal.

---



### TOOLS:

- [iFixit Opening Tools](#) (1)
  - [T6 Torx Screwdriver](#) (1)
  - [Tweezers](#) (1)
-

## Step 1 — Battery



- Place your BlackBerry face down in front of you.

## Step 2



- Locate the indent on the bottom of the back cover.
- Use your fingernail to lift and remove the back cover.

### Step 3



- From the top, use your fingernail to lift and remove the battery.

### Step 4 — Keyboard



- Use the T6 Torx screwdriver to unscrew the two 5mm screws highlighted.



## Step 5



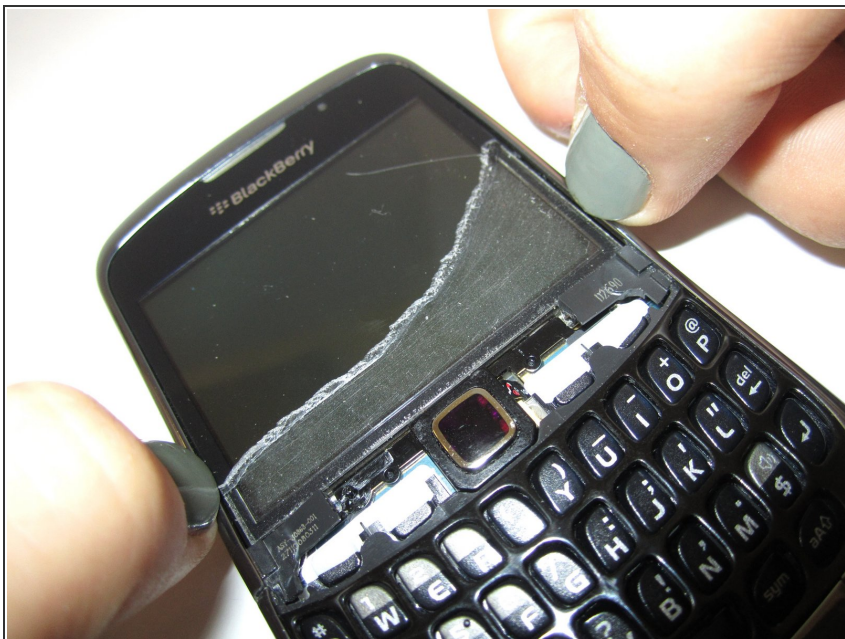
- Place the phone face up and use tweezers to securely grip and lift the screen upwards.

## Step 6



- Use a plastic opening tool to lift the bottom edge of the front cover.

## Step 7



- Use your nails to unclip the sides of the frame from the phone.

## Step 8



- Lift and remove the frame.

## Step 9



- Lift and remove the keyboard.

## Step 10 — Screen



- Locate and remove the two 5mm screws on top of keyboard base using the T6 Torx screwdriver

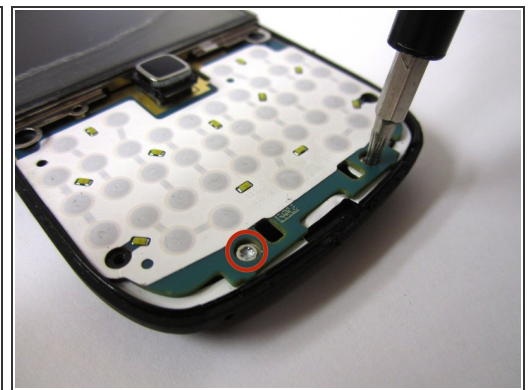
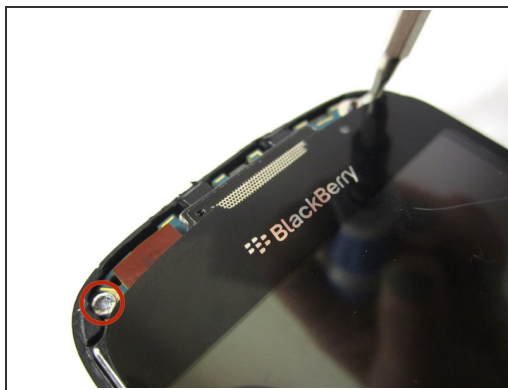


## Step 11



- Carefully pull the keyboard base up and away from the phone.
- Disconnect the keyboard base from the phone completely.

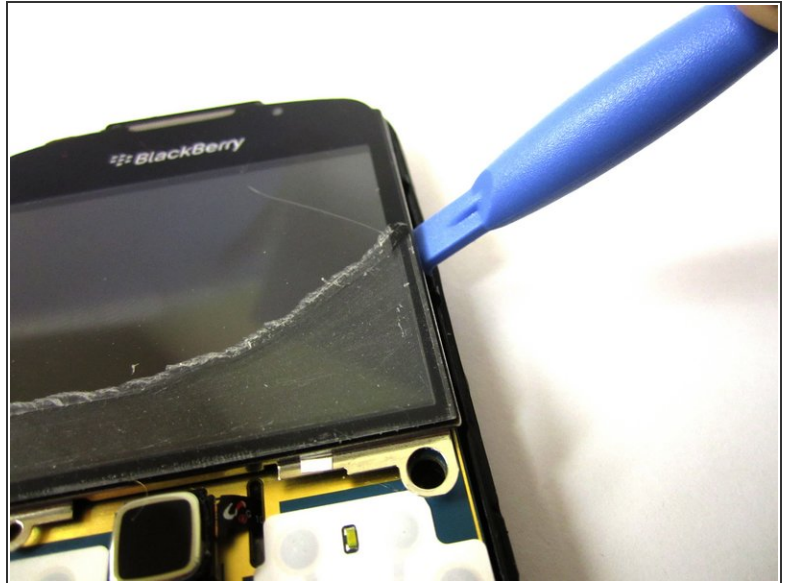
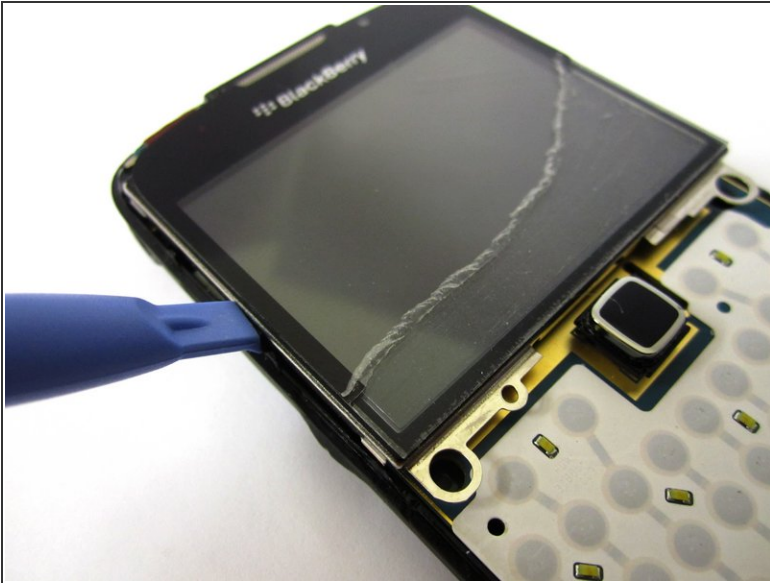
## Step 12



- Locate and remove the four 5mm screws on the top and bottom of the phone with a T6 Torx screwdriver



## Step 13



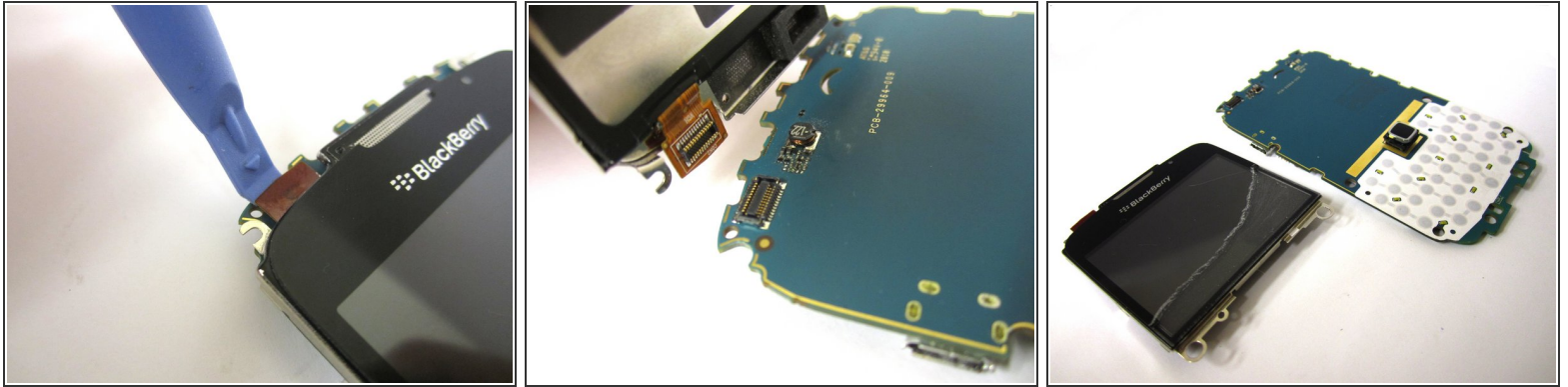
- Use a plastic opening tool to find the crease below the screen.
- Insert where shown and use the tool to unclip the two sides of screen from body.
- ⓘ The opening tool goes approximately midway between the top and bottom edge of the screen.

## Step 14



- From the back of the phone, use a finger to push the front piece of the phone away from the back piece.

## Step 15



- Use a plastic opening tool to detach the ribbon cable from the top left corner of the screen, and separate the screen from the motherboard.

To reassemble your device, follow these instructions in reverse order.