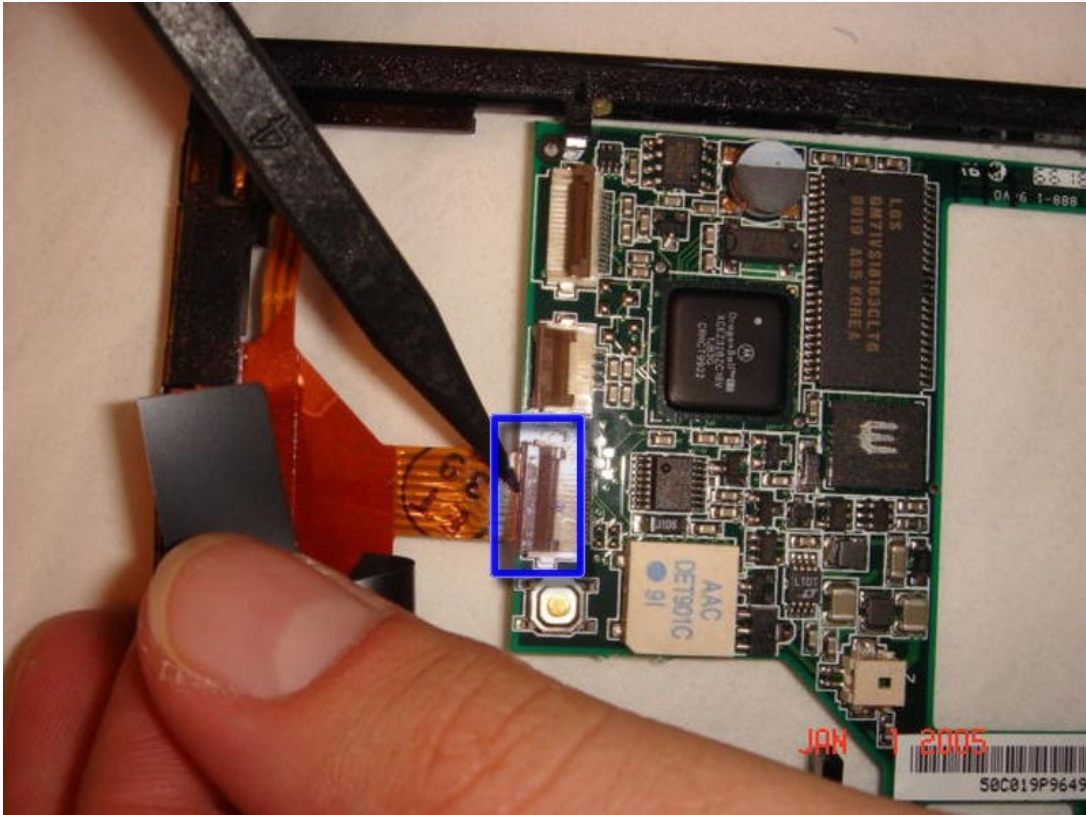




Palm v Logic Board Replacement

A brief description on how to remove the logic...

Written By: Anthony Platt



INTRODUCTION

A brief description on how to remove the logic board

TOOLS:

[Heat Gun](#) (1)
[Spudger](#) (1)
[Tweezers](#) (1)
[iFixit Opening Tool](#) (1)

Step 1 — Outer Case



- Lay device face down on surface.

Step 2



- Heat the left and top edges with hairdryer for one minute.
- Move hairdryer back and forth to evenly heat up surface.

⚠ Caution: directly heating the screen can melt or distort the screen.

Step 3



- Use [tweezers](#) to hold Palm right side down on it's side.
- Use a plastic opening tool to pry open front and back casing.
- ⓘ If you are unable to open you may need to heat with hairdryer for longer.

⚠ Be sure not to touch case directly with fingers, it will be hot!

Step 4



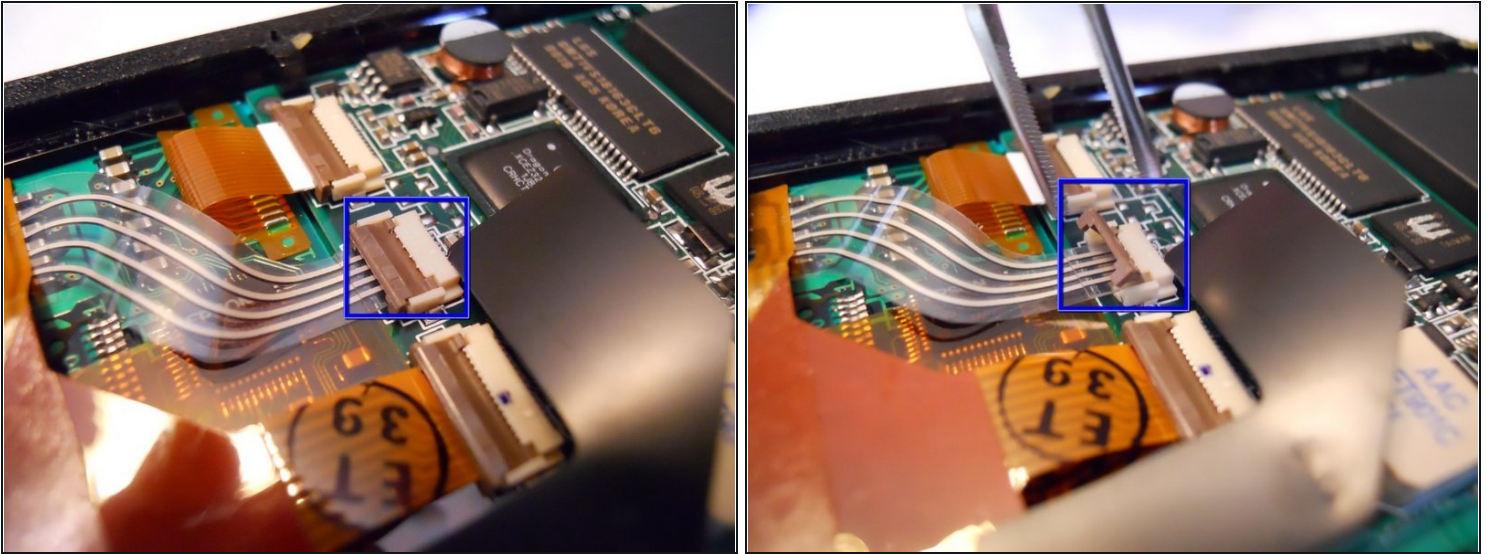
- Leave plastic opening tools in between front and back casing.
- Rotate Palm and repeat steps 2 and 3 for right and back edges.

Step 5



- Now pry open front and back casing with plastic opening tools.
 - Separate front and back casing completely.
- ⓘ Power button will fall off once front and back casing have been removed. Be sure not to lose it.

Step 6 — Screen



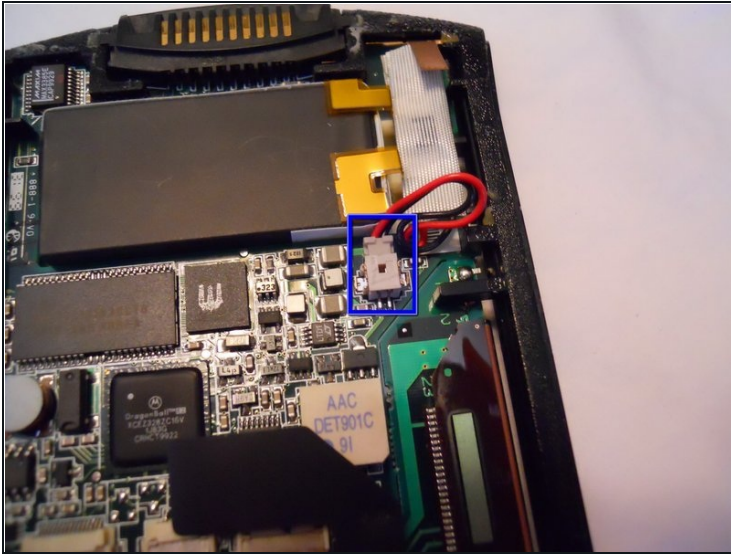
- In order to separate the screen from the motherboard you must disconnect the ribbon attached to the screen.
- To do this, using [tweezers](#), flip up the cable clamp that is connecting the ribbon to the screen.
- Once the clamp is up you can use the tweezers to gently detach the ribbon.

Step 7



- Now you must flip up the adjacent clamp as well, using tweezers like before.
- After the clamp is flipped you can gently remove the second ribbon with tweezers.

Step 8



- Before removing the screen you must detach one more wire, the battery connector.
- Using the tweezers, squeeze the connector attached to the wire and gently pull.

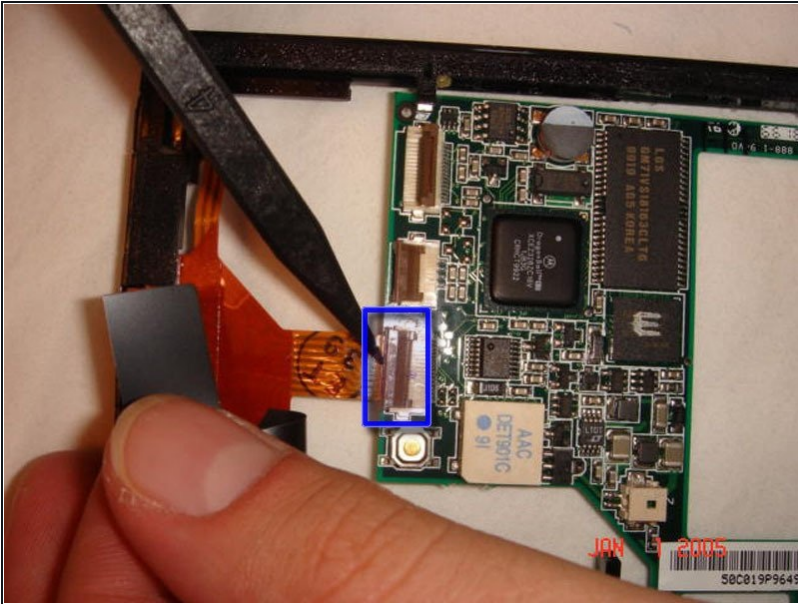
⚠ Do not pull from the wire.

Step 9



- Now that both ribbons and the wire are disconnected, you can apply a downward pressure to the battery. You will have to carefully rotate the frame so that the battery can go through.

Step 10 — Logic Board



- Lift up the black flap covering the ribbon cable with your hand
- With the spudger, lift green cable clamp
- Gently remove ribbon cable from clamp

Step 11



- With your hands, pop out the logic board from the casing
- ⚠ If board bends significantly, try pushing from another angle

To reassemble your device, follow these instructions in reverse order.