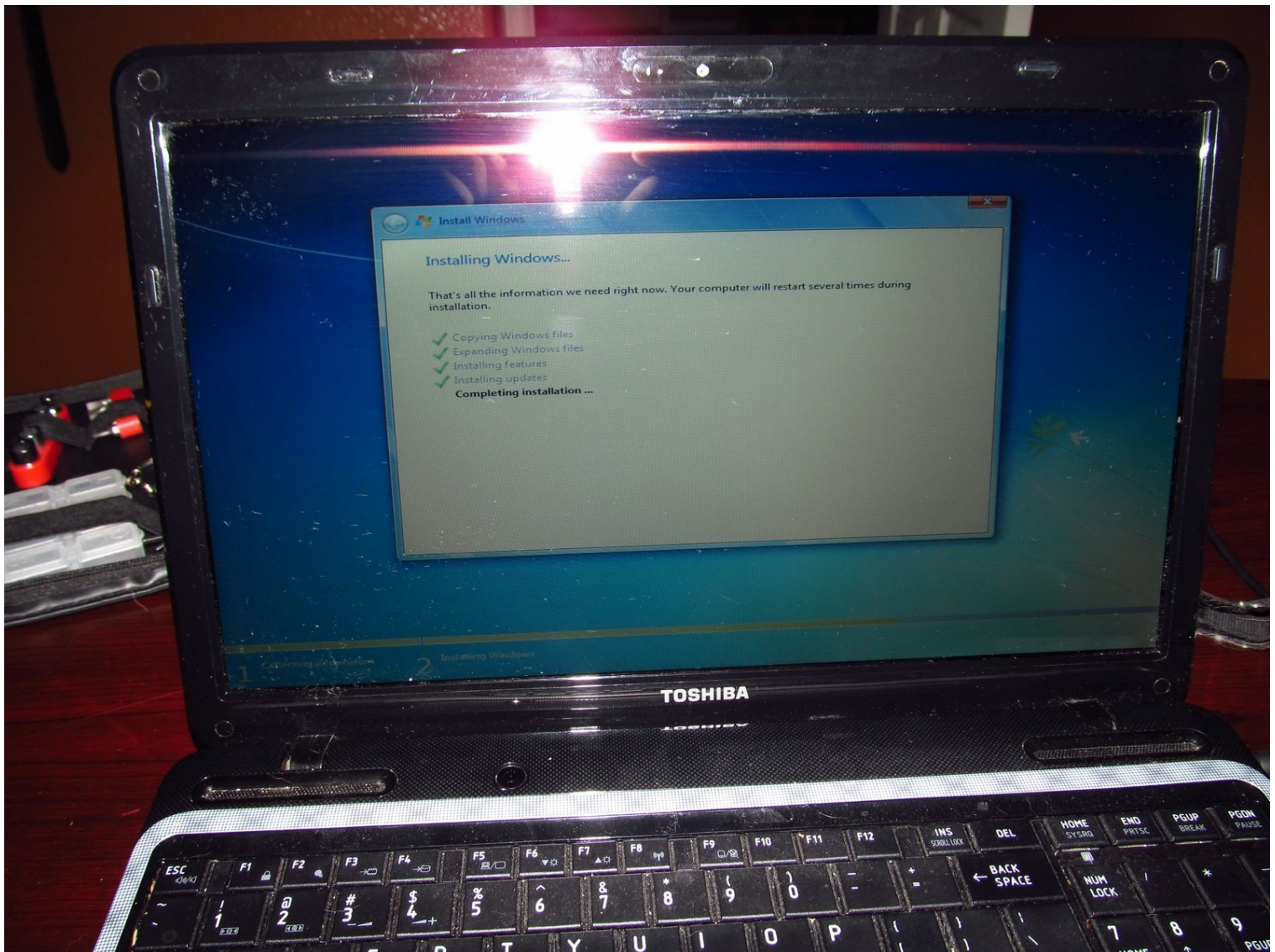




Toshiba L755 Hard Drive Replacement

Is the hard drive in your Toshiba L755 having...

Written By: Nick



INTRODUCTION

Is the hard drive in your Toshiba L755 having issues? This guide will show you how to replace it.

Note: This guide does NOT cover operating system installation. You will need to figure this part out yourself.

Some notes for this guide:

- This computer **REQUIRES** a 7mm-9.5mm adapter for installation of a 7mm hard drive, which covers all modern Advanced Format drives. You will have to stick this to the top or bottom of your replacement hard drive. For a traditional spinning drive, I would suggest the bottom. If you use the top, cut it out to make room for the breather hole. The adapter in question can be found on [eBay](#) if you do not have one on hand. No modification is needed for SSD's as there is no breather hole.
- If you are reinstalling Windows, buy a OEM DVD that does not include a key if you just need the media and your product key is not worn out. If it is worn out, you will need OEM media that also comes with a product key. If you can find a Digital River ISO, this will work. Media other then Digital River images should not be trusted.
- For Linux, you can find the distro you want from the official website and download it from there.



TOOLS:

[Mako Driver Kit - 64 Precision Bits](#) (1)

[iFixit Opening Tool](#) (1)



PARTS:

[SATA Hard Drive \(9.5mm\)](#) (1)

Not a common drive anymore. You probably won't be able to find a drive that is exactly 9.5mm.

[7mm to 9.5mm bracket](#) (1)

For installation of an SSD and modern hard drives

[Hard drive \(7mm\)](#) (1)

Needs to be paired with a 7mm-9.5mm adapter. If you are using a platter drive, stick it on the PCB or cut it so you don't block the breathing hole.

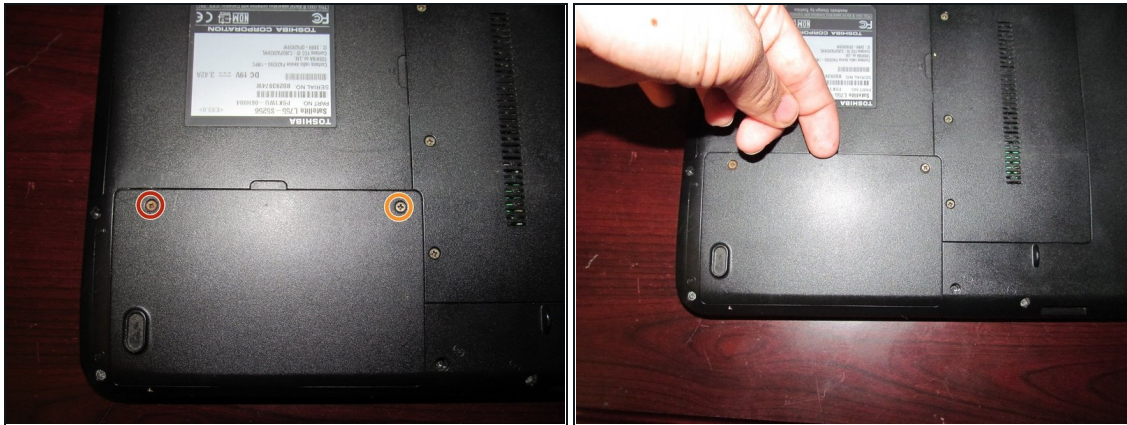
Step 1 — Remove the battery



- Remove the battery from the laptop. To do this, by unlocking the battery from the computer, and then hold the spring release clip back, while pulling the battery out of the laptop.

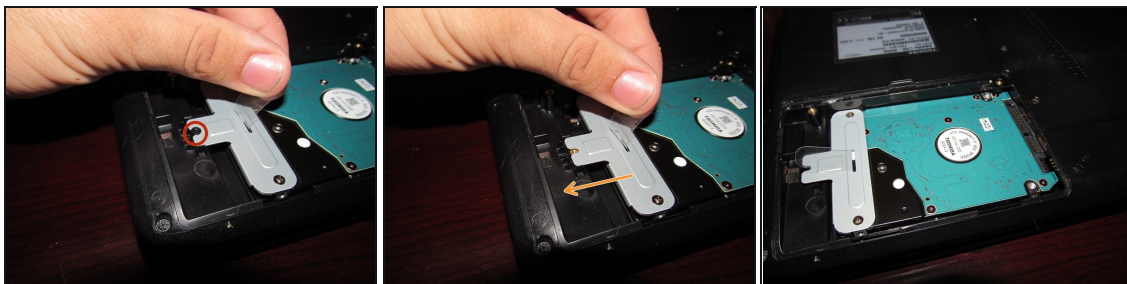
i Optional: Once you remove the battery, hold the power button down for 10-15 seconds to drain the system. This is optional, so you don't have to do this if you choose not to.

Step 2 — Remove the hard drive door



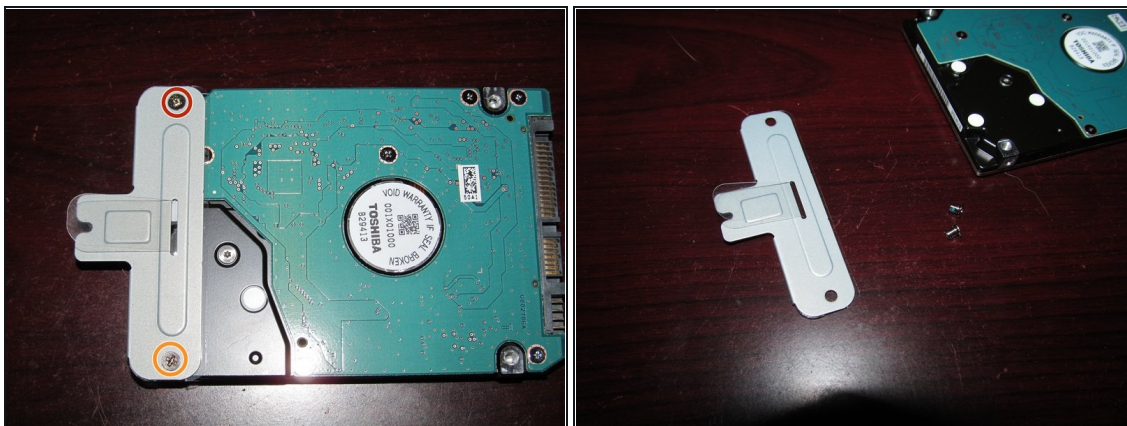
- Remove the 2 screws from the hard drive door. Lift the door up with a plastic pry tool.
- ⓘ If you have one available, you can use a spudger as well. However, plastic pry tools will suffice.

Step 3 — Remove the drive clip screw



- Remove the screw holding the hard drive in the computer. Slide the drive backwards to remove it from the laptop.

Step 4 — Remove the drive clip



- Remove the hard drive mounting bracket. Loosen the 2 highlighted screws to remove it from the bracket.

Step 5 — Replace the drive bracket



- Screw the hard drive bracket on the new hard drive.

Step 6 — Replacing the drive in the laptop



- Reinstall the hard drive in the laptop. Put the drive in the system as shown. Push the drive forward to lock the drive in. Once you do this, screw the drive in the laptop.

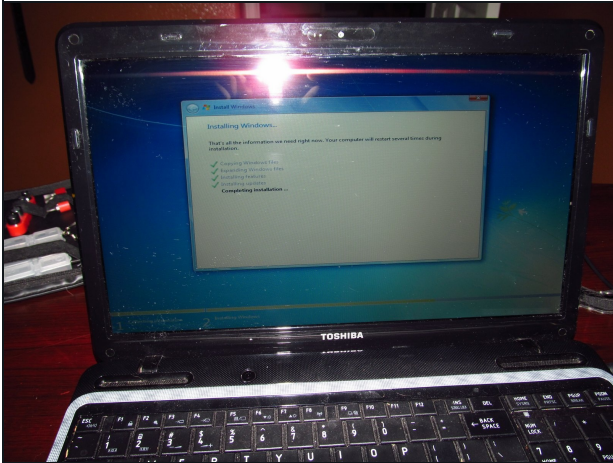
i If you are using an SSD, you will need a 7mm to 9.5mm adapter. A lot of SSD's include this, but you may have to buy one. You can stick this in the chassis of the laptop or on the drive. **Note: All modern SSD's are 7mm. Hard drives are either 7mm or 9.5mm. If you are dealing with a spinning drive, a 7mm-9.5mm adapter may not be an option.**

Step 7 — Screw the hard drive cover back on



- Screw the hard drive cover on the laptop. Once it is screwed in, snap it down to secure it.

Step 8 — OS installation



- Once the hard drive is replaced, install the operating system on the laptop.

i **For Windows:** you will need a **Microsoft or Digital River ISO**, if you are getting it online. If you do not have an image on hand, it is generally considered safer to buy an OEM DVD without a product key. Unless you can find other official means to get the ISO, I do not recommend using an ISO from the Internet.

i **Non Microsoft OSes:** The problem with this is I do not know what you want to install. If I know how to find it I may be able to help you, but I cannot guarantee that I know for sure and can help you find the ISO you need. As such, you are probably on your own.

To reassemble your device, follow these instructions in reverse order.