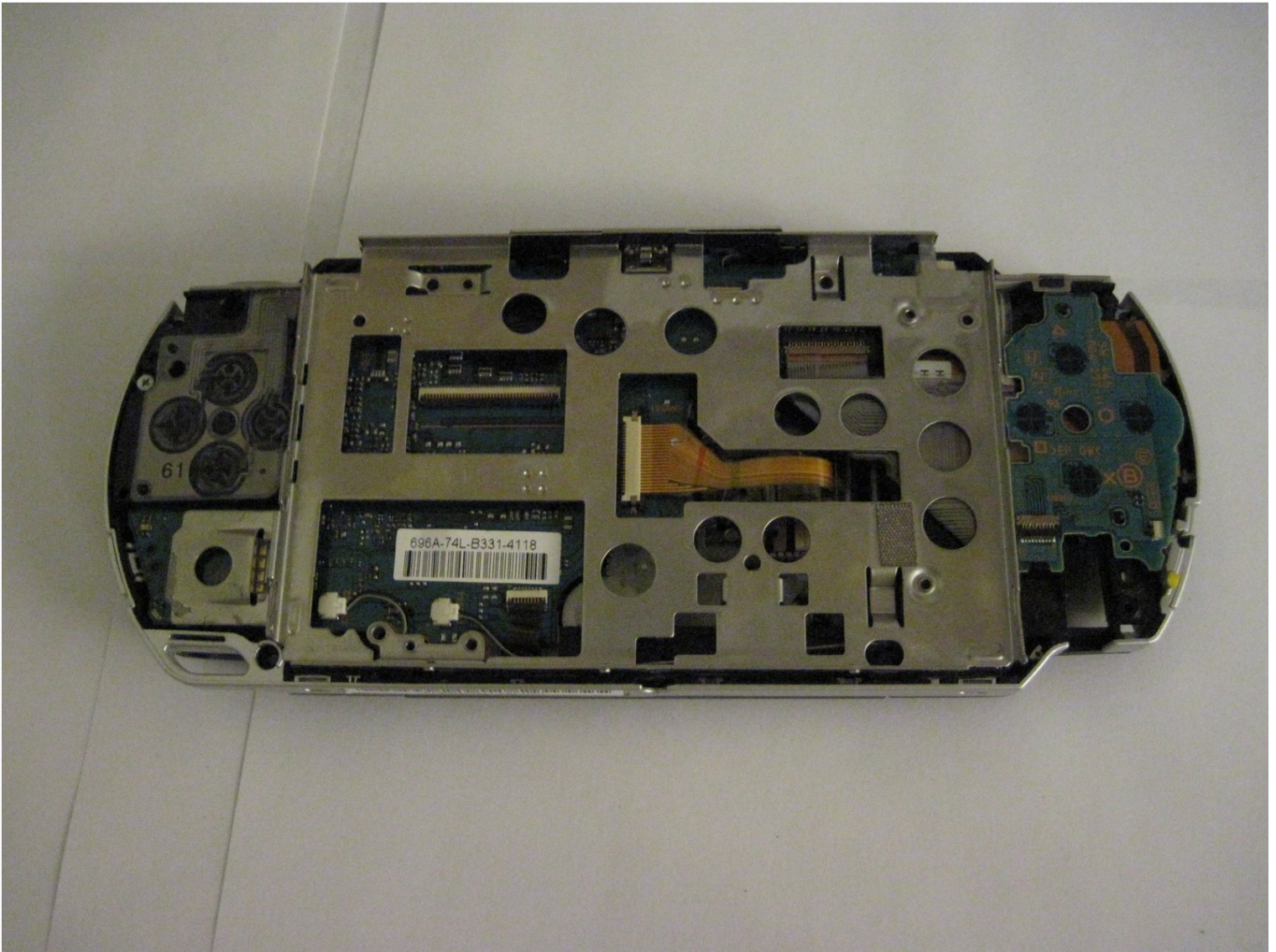




PSP 1000 Speakers Replacement

This guide will show you how to remove and...

Written By: Chris



INTRODUCTION

This guide will show you how to remove and replace your PSP speakers.



TOOLS:

[Mako Driver Kit - 64 Precision Bits](#) (1)

[Phillips #00 Screwdriver](#) (1)

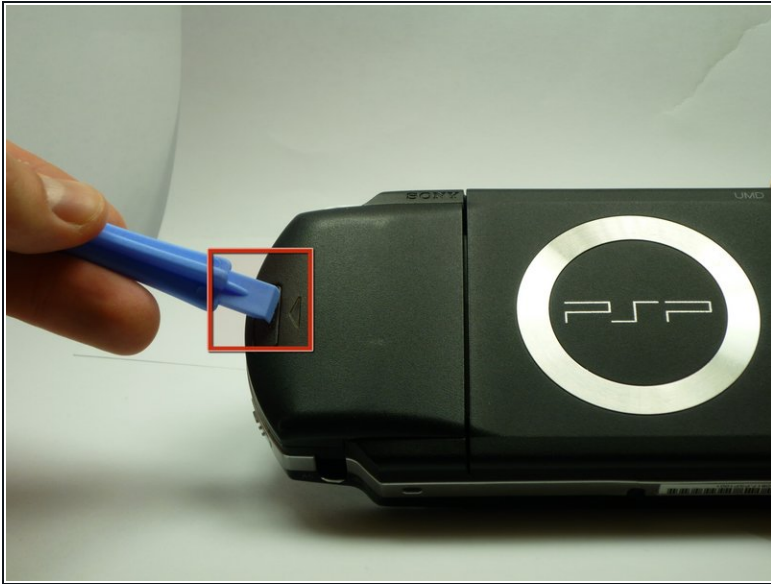
[Spudger](#) (1)

Step 1 — Battery



- Turn the PSP over so its back is facing you.

Step 2



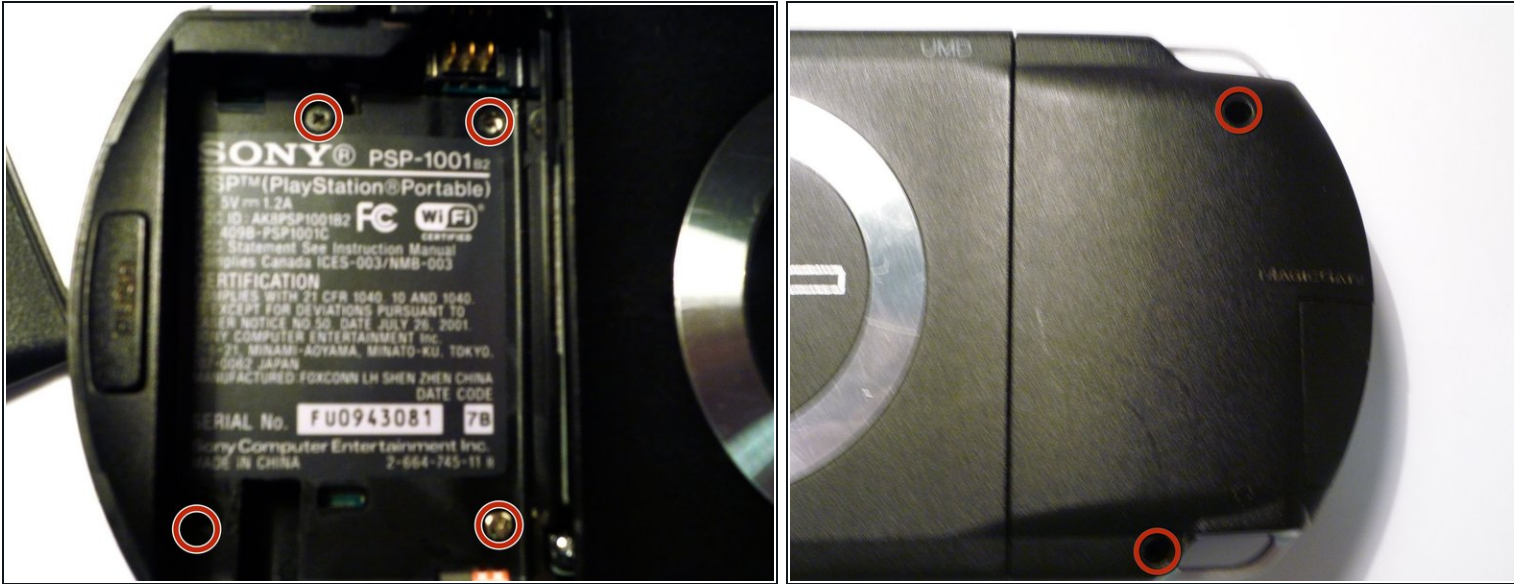
- Locate the battery casing button on the rear-left side of the PSP.
- Press down the button and remove the battery cover.

Step 3



- Using your finger, remove the battery upwards from the system as shown.

Step 4 — Front Casing



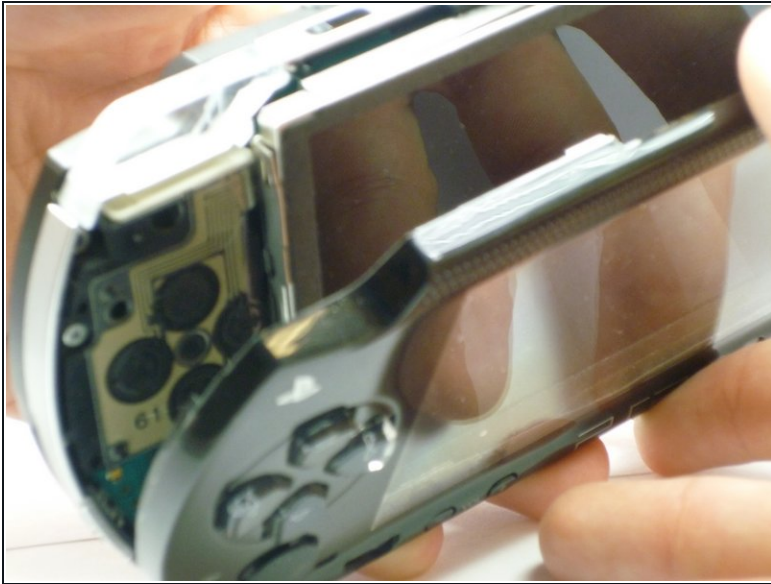
- Remove the four screws shown with a Phillips #00 screwdriver.
- ❗ You will have to peel back the guarantee sticker to access the screw on the lower left.

Step 5



- Remove the screw from the bottom side of the PSP. Keep it separated from the rest of the screws.
- Remove screws from back righthand side within the holes.

Step 6



- Gently separate the outer plastic casing from the rest of the system as shown.

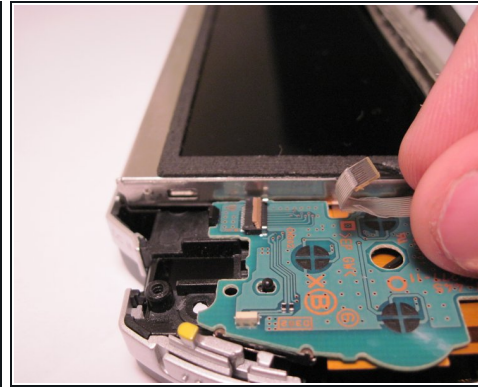
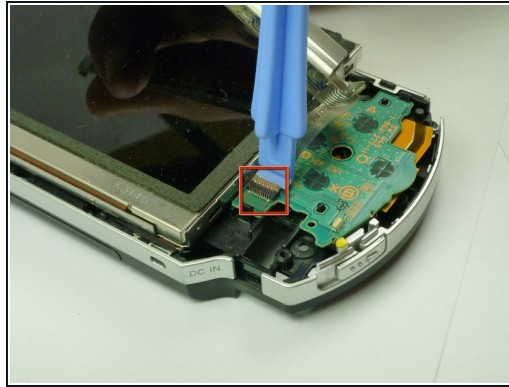
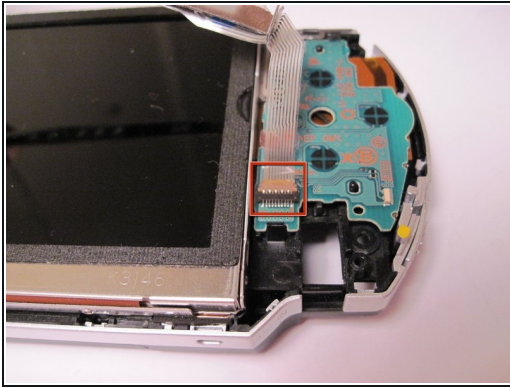
Step 7 — LCD Screen



- The Button Board, at the base of the LCD Screen, is held by two clips.
- Pry these clips over the nubs using a PSP opening tool. This will release the clips.

⚠ The Button Board is still attached to the PSP by a ribbon cable!

Step 8



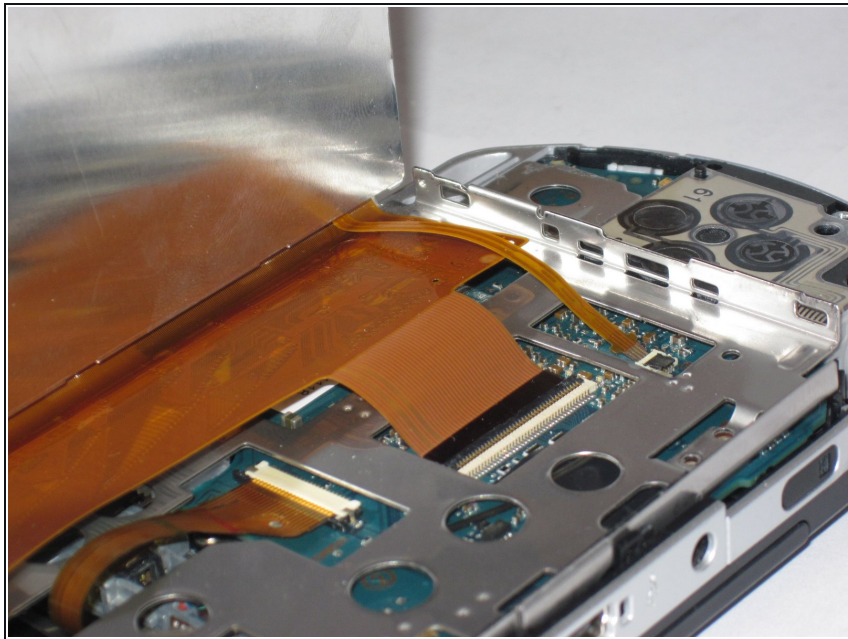
- The Button Board Ribbon Cable is held down with a latch. Lift the latch open, away from the ribbon cable.
- Pull the cable away from the latch.

Step 9



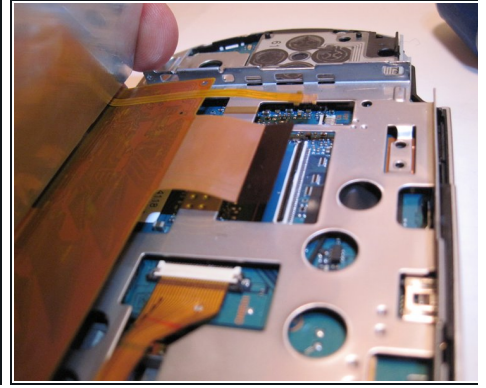
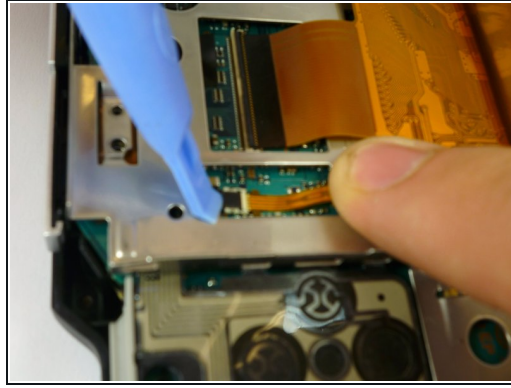
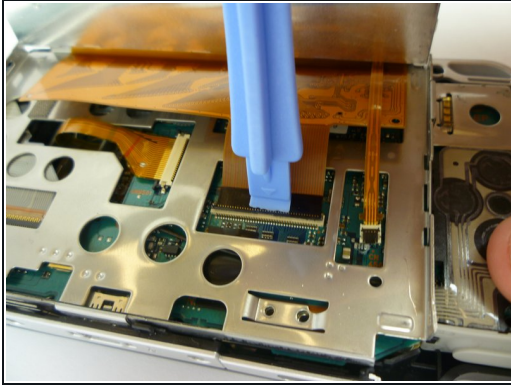
- The LCD Screen is held by the LCD Frame with similar clips. Slide a thin tool between the clip and the screen and gently pry them apart while beginning to lift the screen.

Step 10



- The LCD screen is still attached with ribbon cables. Gently lift up the LCD screen so you do not break them.

Step 11



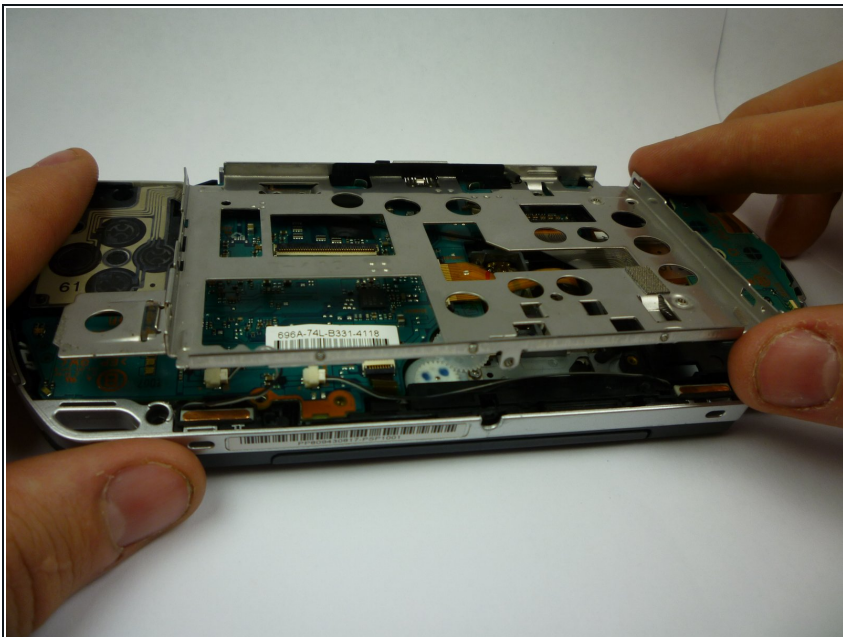
- The thin Ribbon Cable opens from the opposite side in which the Ribbon Cable enters. Open up the latch towards the Ribbon Cable. The latch will pull up and release the ribbon cable. Put your tool behind the black part, then pry up the black piece of plastic.
 - The wide Ribbon Cable opens from the same side in which the Ribbon Cable attaches, and opens away from the cable.
 - Both of these latches are the black pieces.
 - Gently pull the ribbon cables away from the latches. The LCD screen can now be removed.
- ★ When reassembling - be careful which way you push the latches. The small one is very easy to break.

Step 12 — Speakers



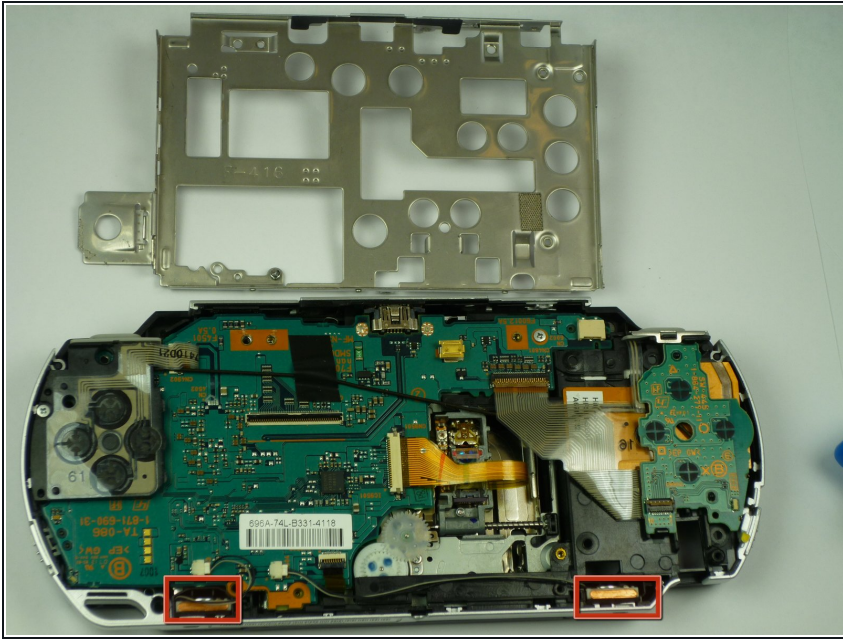
- Remove the screws on the top and bottom of the frame. Be sure to keep track of where you took each screw out of.

Step 13



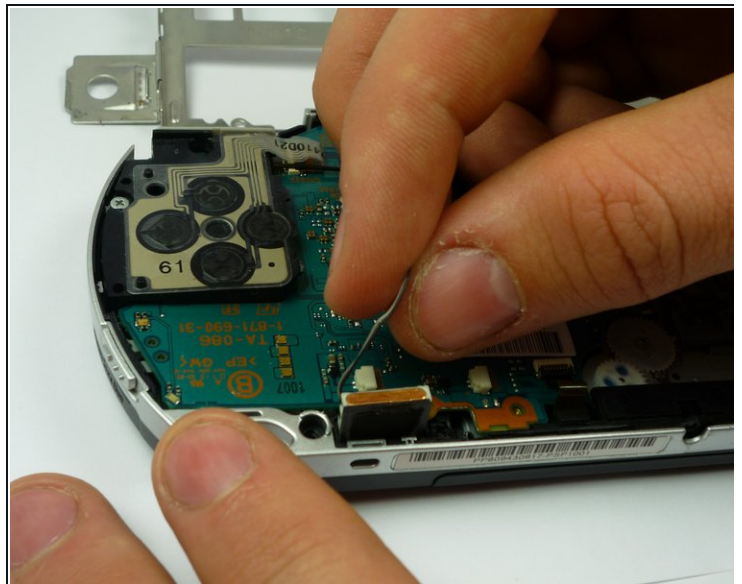
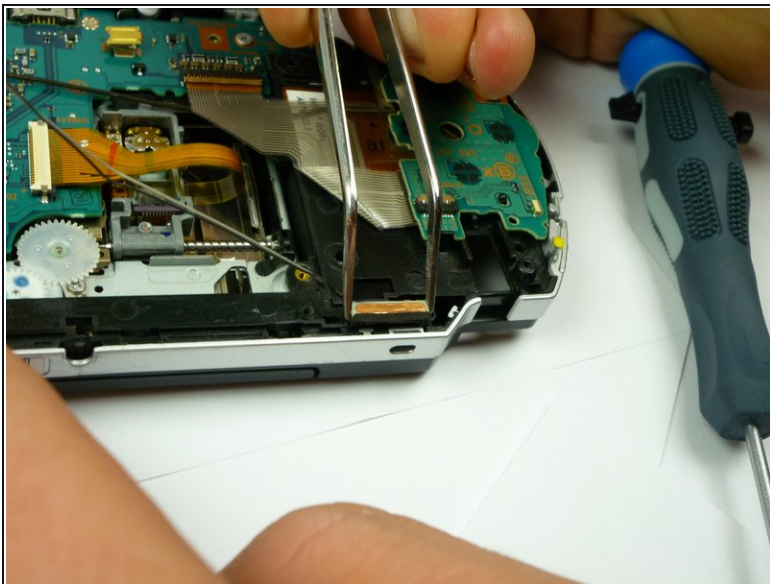
- After the screws are removed, the bottom of the LCD frame will rise.
- Open up the UMD Drive, and then slide the top of the LCD frame slightly to the right while pulling out.

Step 14



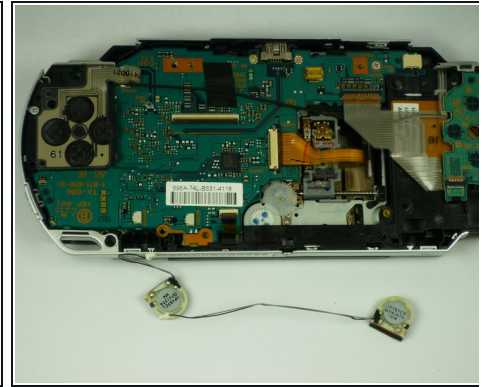
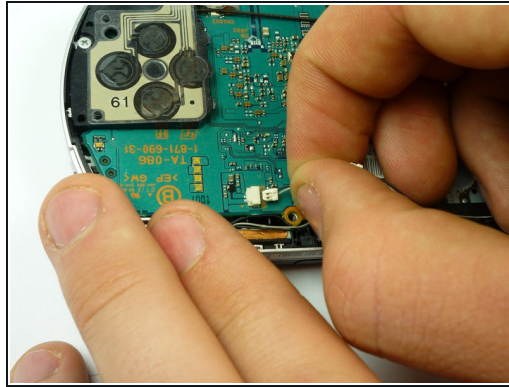
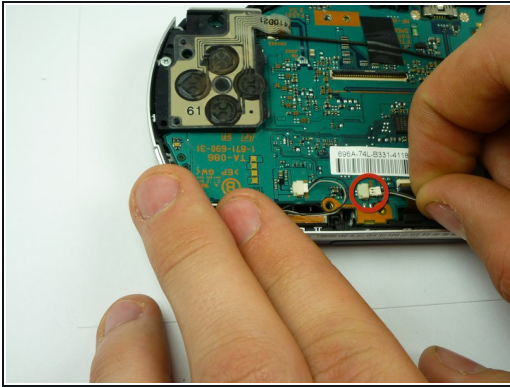
- The speakers will now be exposed.

Step 15



- The speakers should slide out fairly easily; it may be helpful to use tweezers to begin prying them out.

Step 16



- Gently unplug the speakers from the socket. The speakers are completely detached when they are unplugged from the logic board.

To reassemble your device, follow these instructions in reverse order.