



# iPad Mini Wi-Fi Logic Board Assembly Replacement

prerequisite to prepare the logic board for removal of iPad Mini.

Written By: Andrew Optimus Goldheart



---

# INTRODUCTION

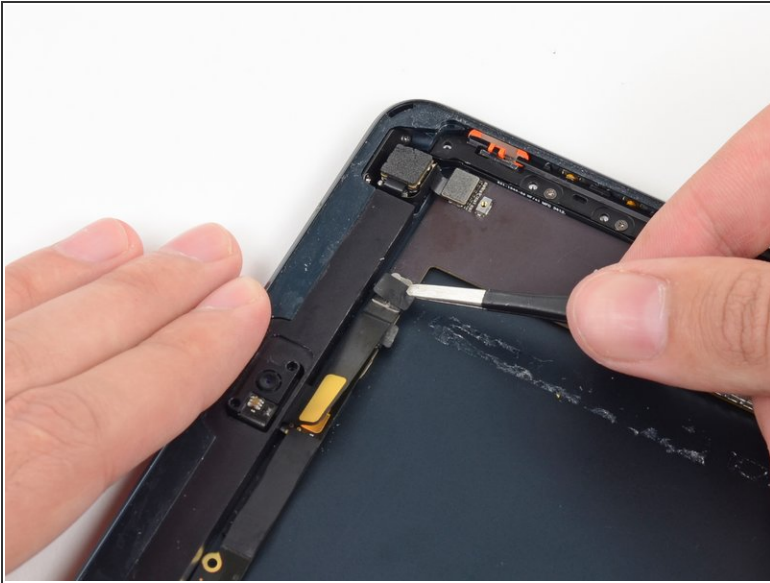
Use this guide to replace the logic board.



## TOOLS:

- [iFixit Opening Tools](#) (1)
  - [ESD Safe Tweezers Blunt Nose](#) (1)
  - [Spudger](#) (1)
-


## Step 1 — Logic Board Assembly



- Use tweezers to peel up and remove the small piece of tape covering the front-facing camera cable connector.

## Step 2



-  The front-facing camera cable connector is secured with pieces of tape that wrap up around the sides of the cable and are fastened to two small metal plates.
- Use a plastic opening tool to gently pry the lower metal plate up from the front-facing camera cable connector.
  - Being careful not to break the plate or the tape attached to it, pry it up and fold it away from the front-facing camera cable connector.



### Step 3



- Gently pry the second (upper) metal plate up from the front-facing camera cable connector.
- Again, carefully pry the plate up and away from the front-facing camera cable connector.

### Step 4



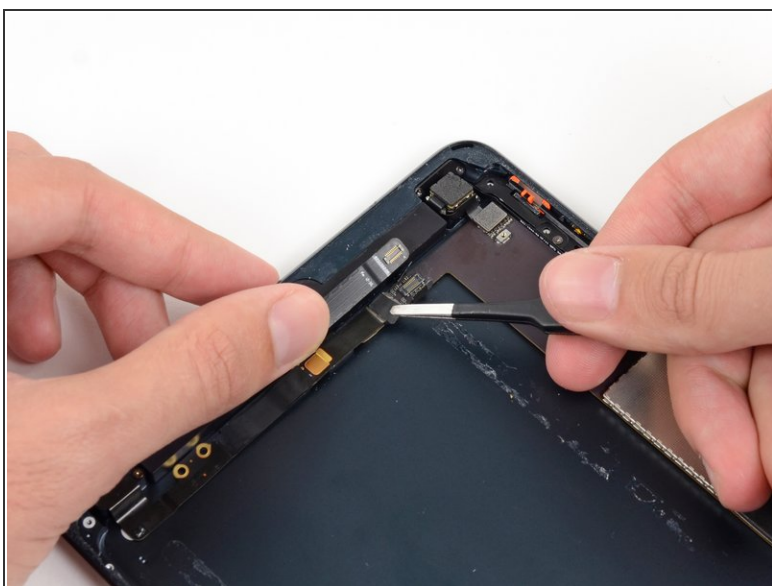
- Use a plastic opening tool to pry the front-facing camera cable's connector up from its socket on the logic board.

## Step 5



- Gently fold the front-facing camera cable up and out of the way of the logic board.

## Step 6



- Use tweezers to peel up and remove the small piece of tape covering the headphone jack cable connector.

## Step 7



- Use a plastic opening tool to gently pry the lower metal plate up from the headphone jack cable connector.
- Being careful not to break the plate or the tape attached to it, pry it up and fold it away from the headphone jack cable connector.



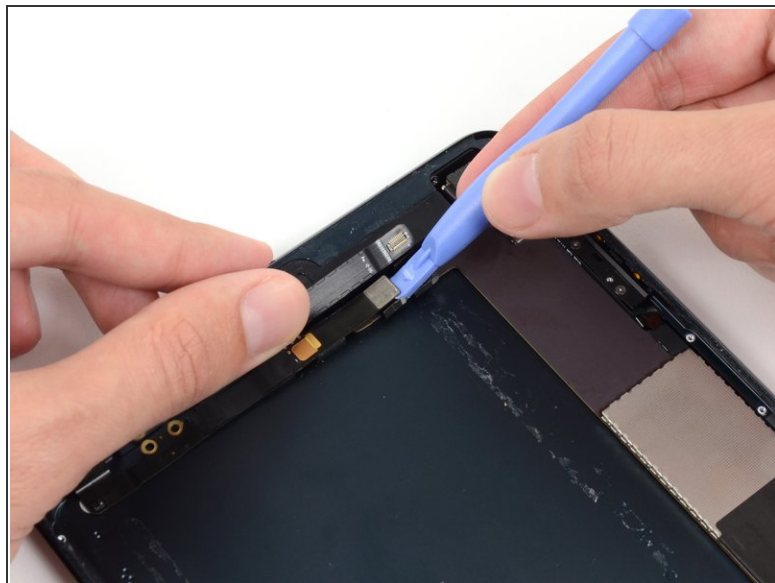
## Step 8



- Pry the second (upper) metal plate up from the front-facing camera cable connector.
- Again, carefully pry the plate up and away from the headphone jack cable connector.

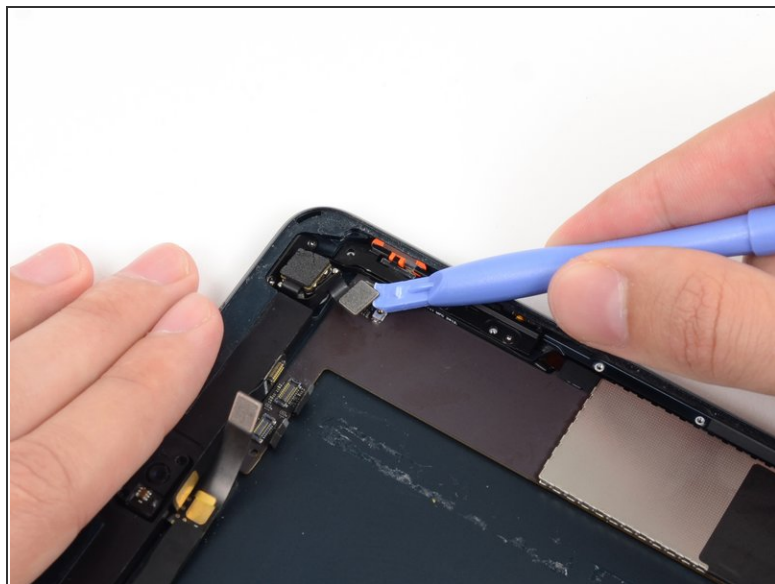


## Step 9



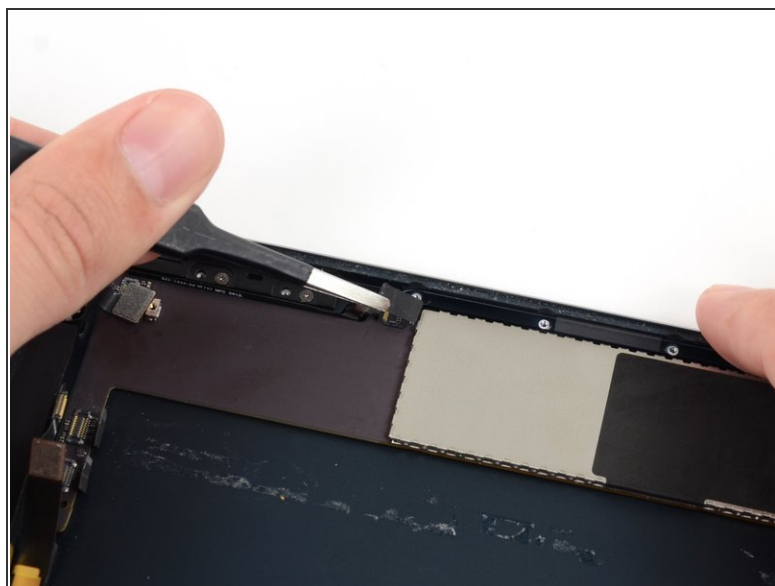
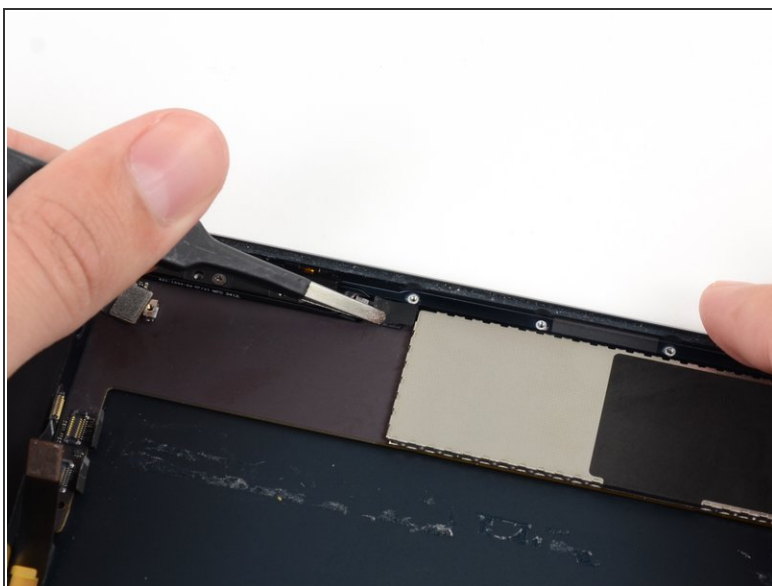
- Use a plastic opening tool to pry the headphone jack cable's connector up out of its socket on the logic board.
- ⓘ Gently bend the headphone jack cable back, away from the logic board.

## Step 10



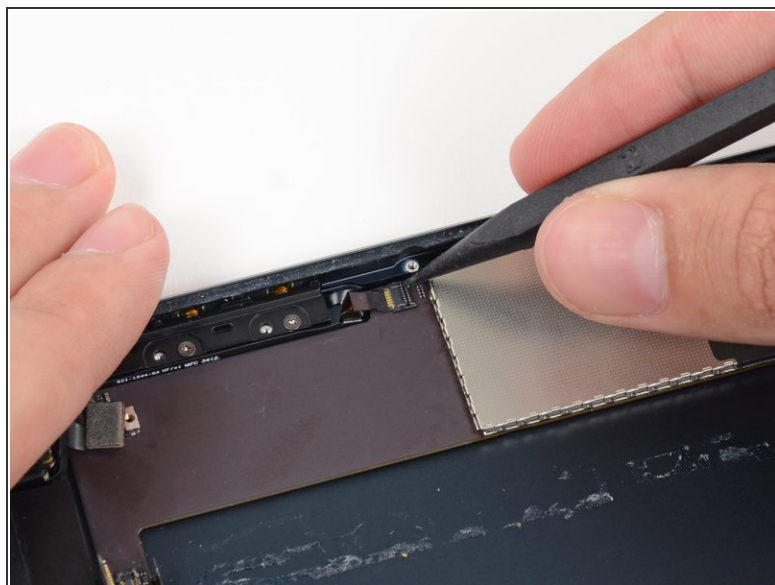
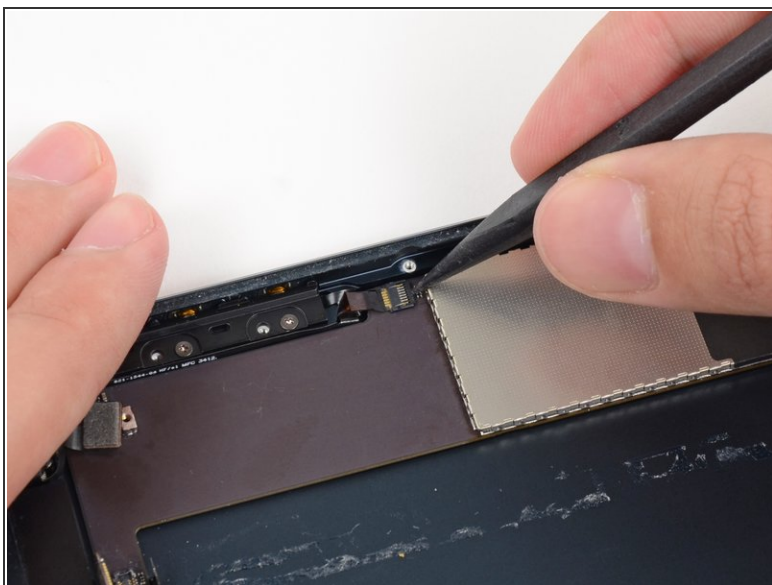
- Use a plastic opening tool to pry the rear-facing camera cable up from its socket on the logic board.

## Step 11



- Use tweezers to peel up and remove the small piece of tape covering the button ribbon cable ZIF connector.

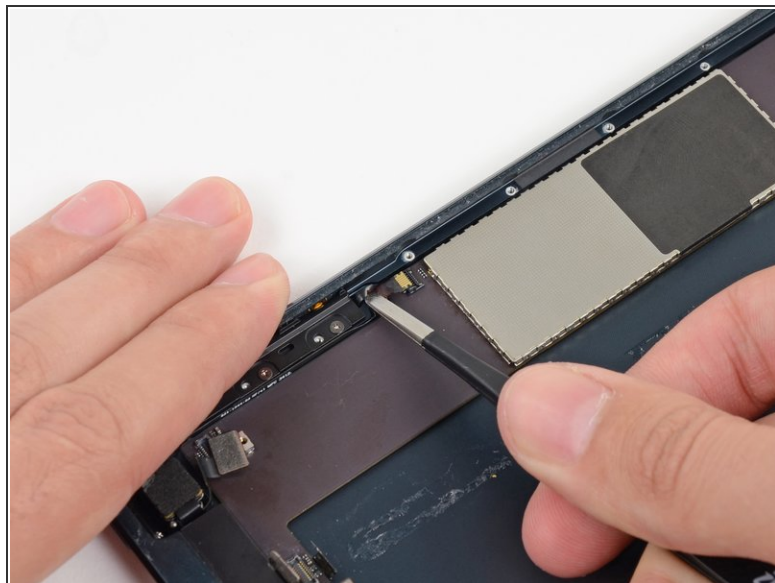
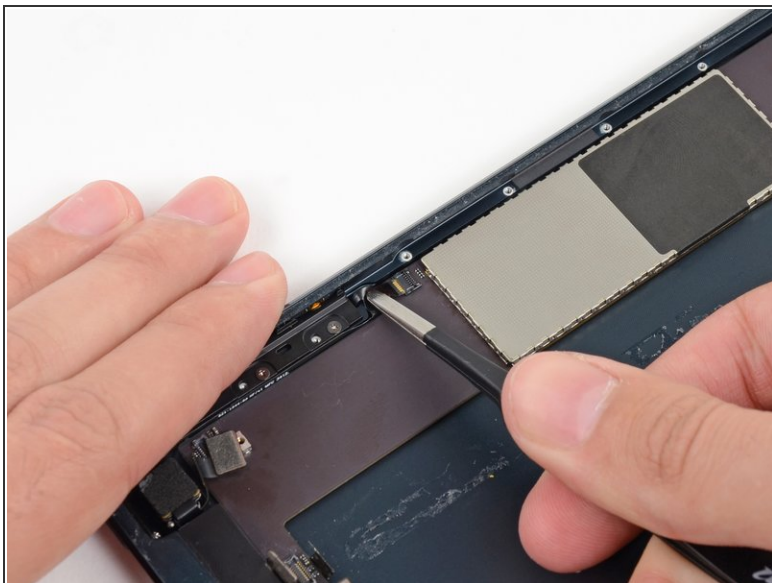
## Step 12



- Use the tip of a spudger to lift up the tab on the button ribbon cable ZIF connector.

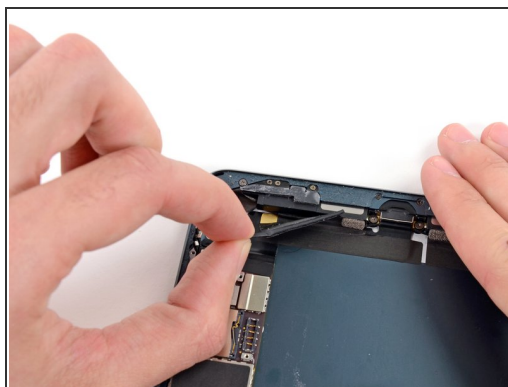
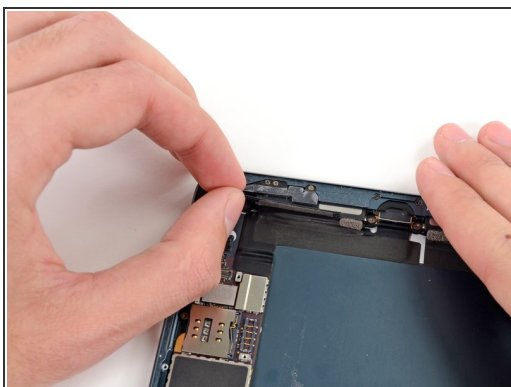


## Step 13



- Use tweezers to pull the button ribbon cable straight out of its ZIF socket on the logic board.

## Step 14



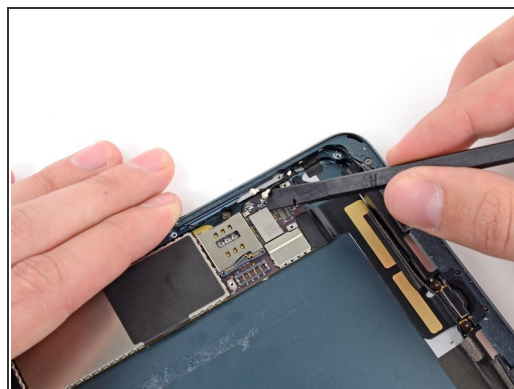
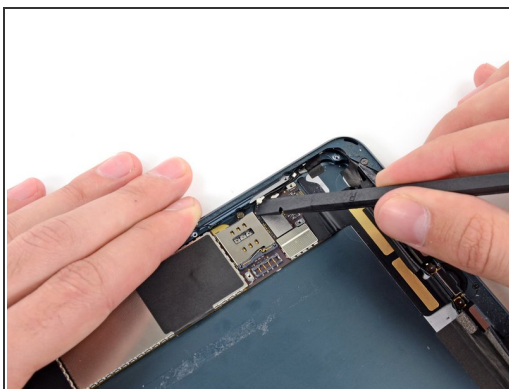
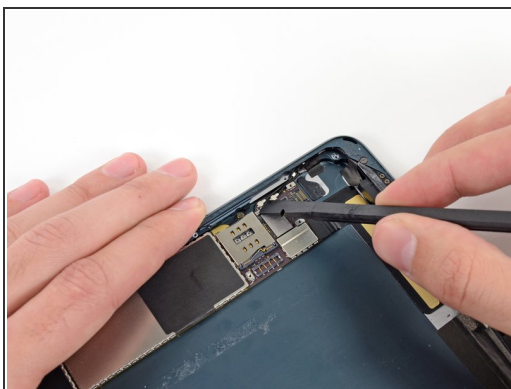
- Gently peel back the wide piece of tape covering the top of the right speaker.

## Step 15



- Continue peeling the tape, and remove it from the iPad.

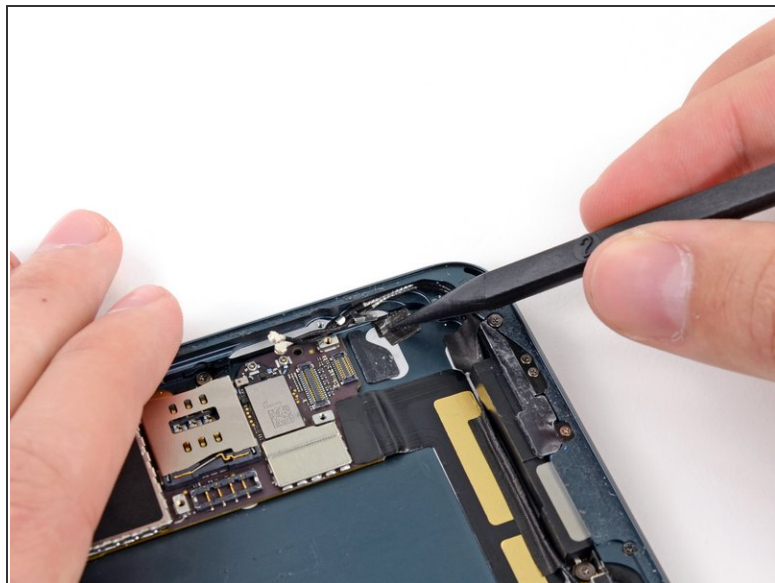
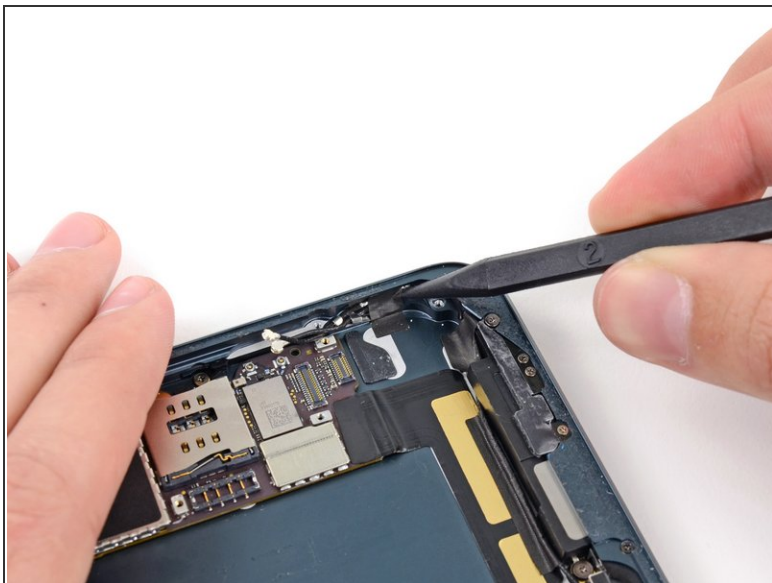
## Step 16



- Use the flat end of a spudger to disconnect the two bottom antenna cable connectors from their sockets on the logic board.

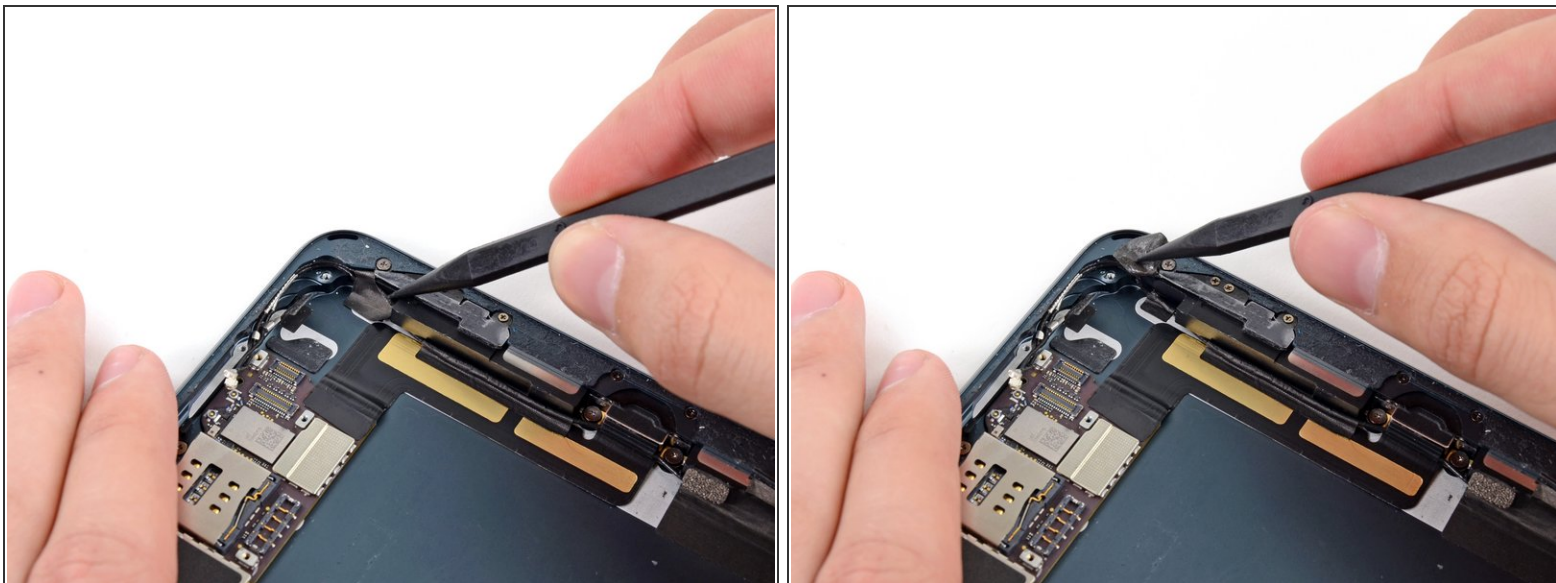


## Step 17



- Use the tip of a spudger to peel back the small piece of tape covering both antenna cables on the bottom right side of the iPad.
- ☑ Leave the lower part of the tape stuck to the back of the rear case to aid in reassembly.

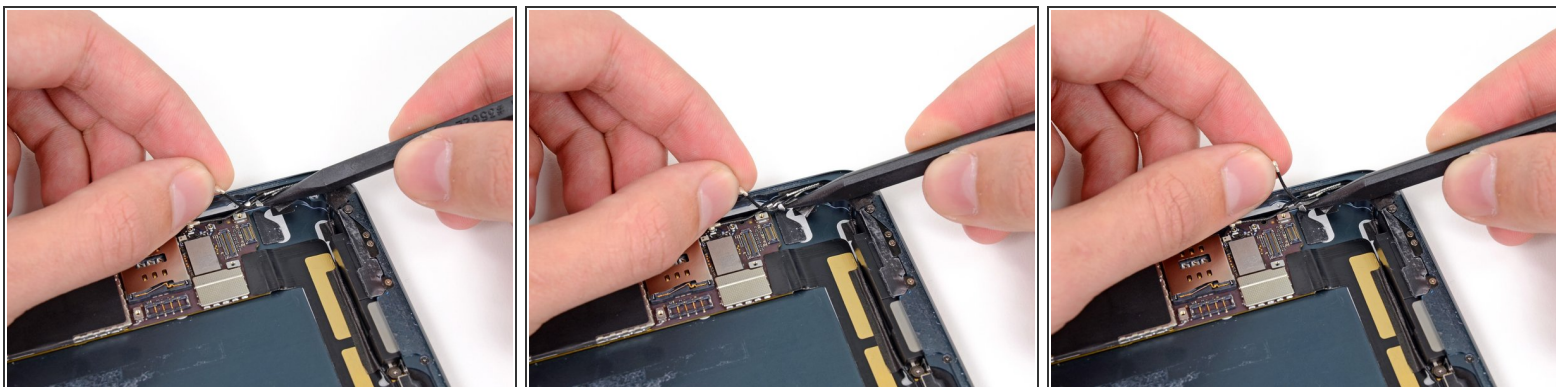
## Step 18



- With the tip of a spudger, peel up the larger piece of tape covering both antenna cables near the bottom of the rear case.

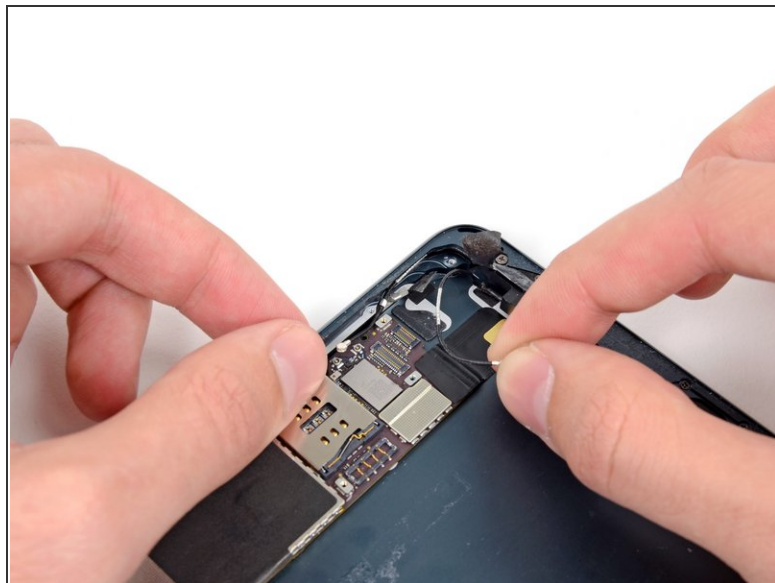
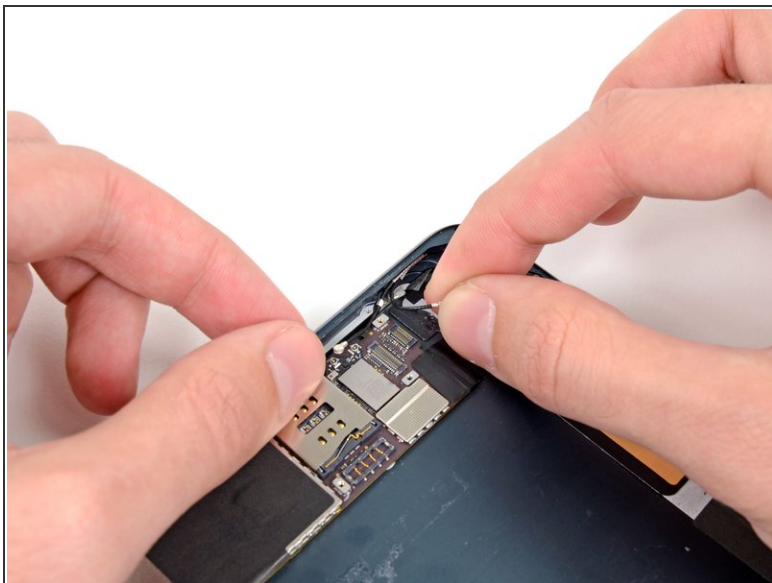
⚠ Do not try to remove this piece of tape; it is wrapped around the top antenna cable.

## Step 19



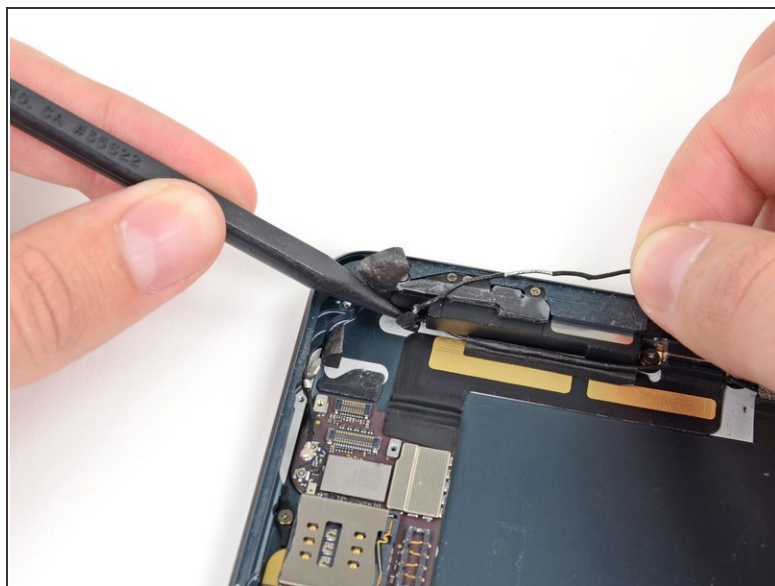
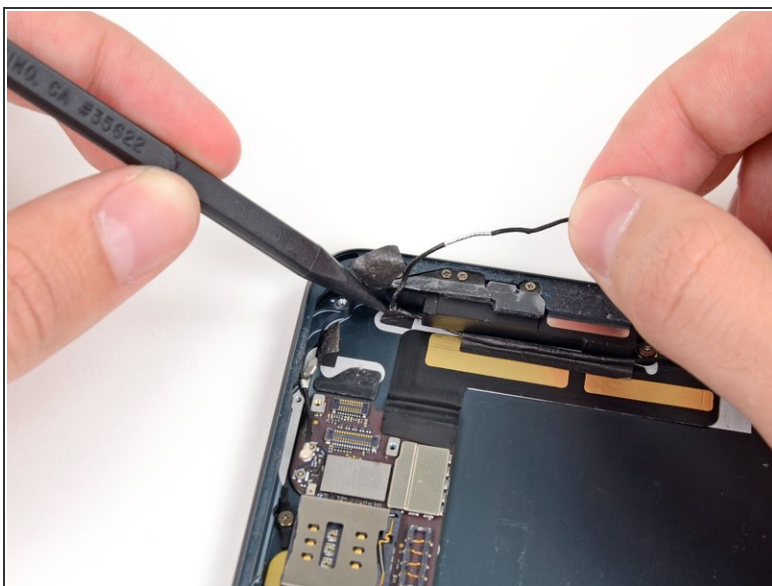
- Use the tip of a spudger to pry the small metal retaining clip off the left antenna cable, then de-route the cable from the clip.

## Step 20



- De-route the antenna cable from the corner of the iPad.

## Step 21



- Use the tip of a spudger to remove the small piece of tape securing the antenna cable in the bottom right corner of the iPad.

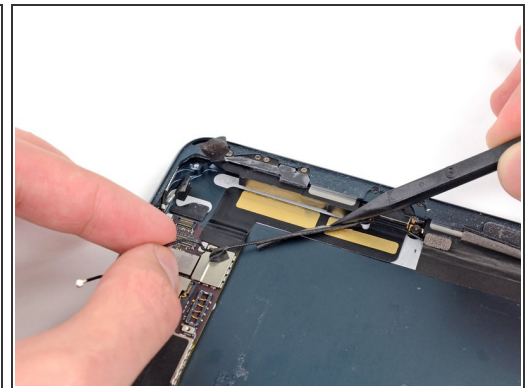
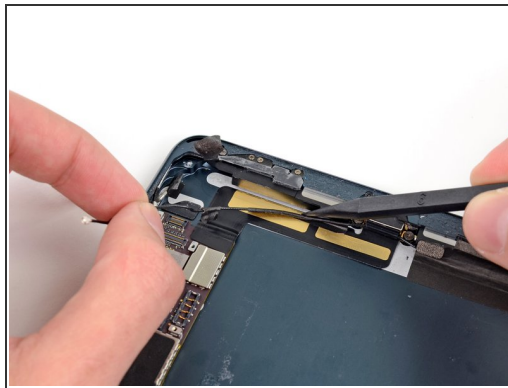


## Step 22



- Peel the cable back from the corner of the iPad.

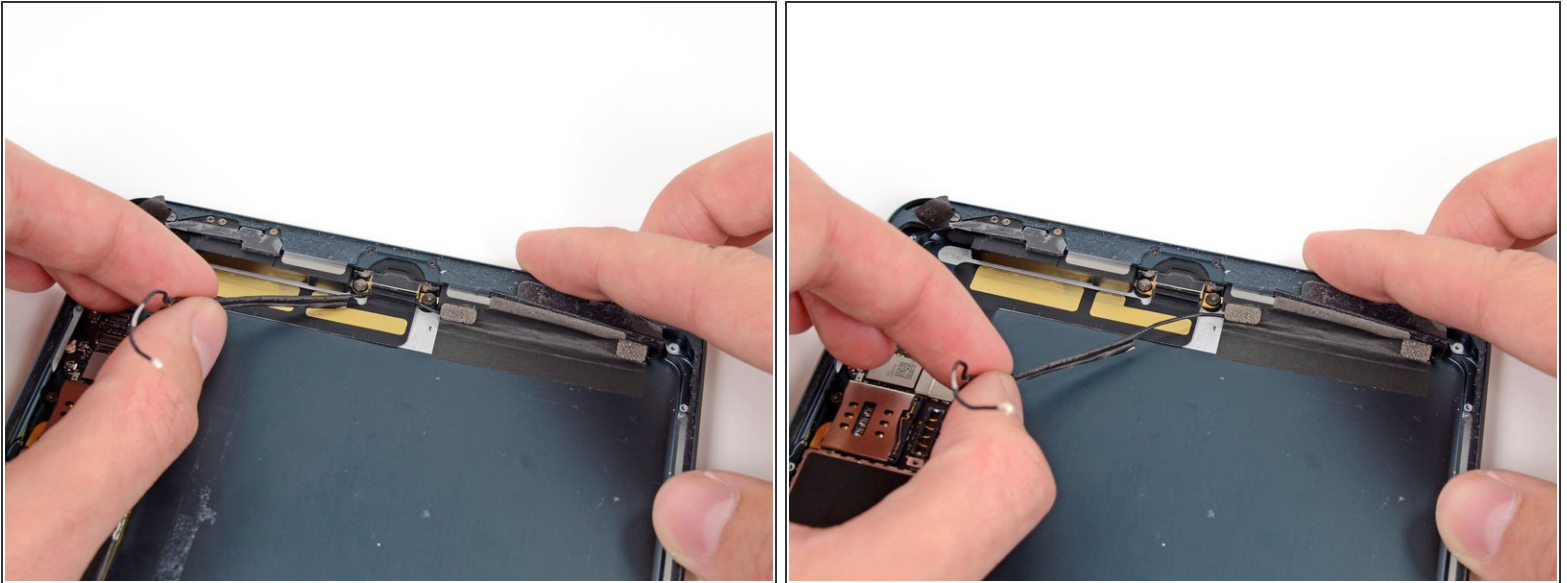
## Step 23



- Use the tip of a spudger to pry the antenna cable tape up from the rear case of the iPad.
- Gently pull the antenna cable out of the way as you work along the piece of tape, to keep it from resealing.



## Step 24



- Pull the antenna cable from the slot behind the Lightning connector.

To reassemble your device, follow these instructions in reverse order.