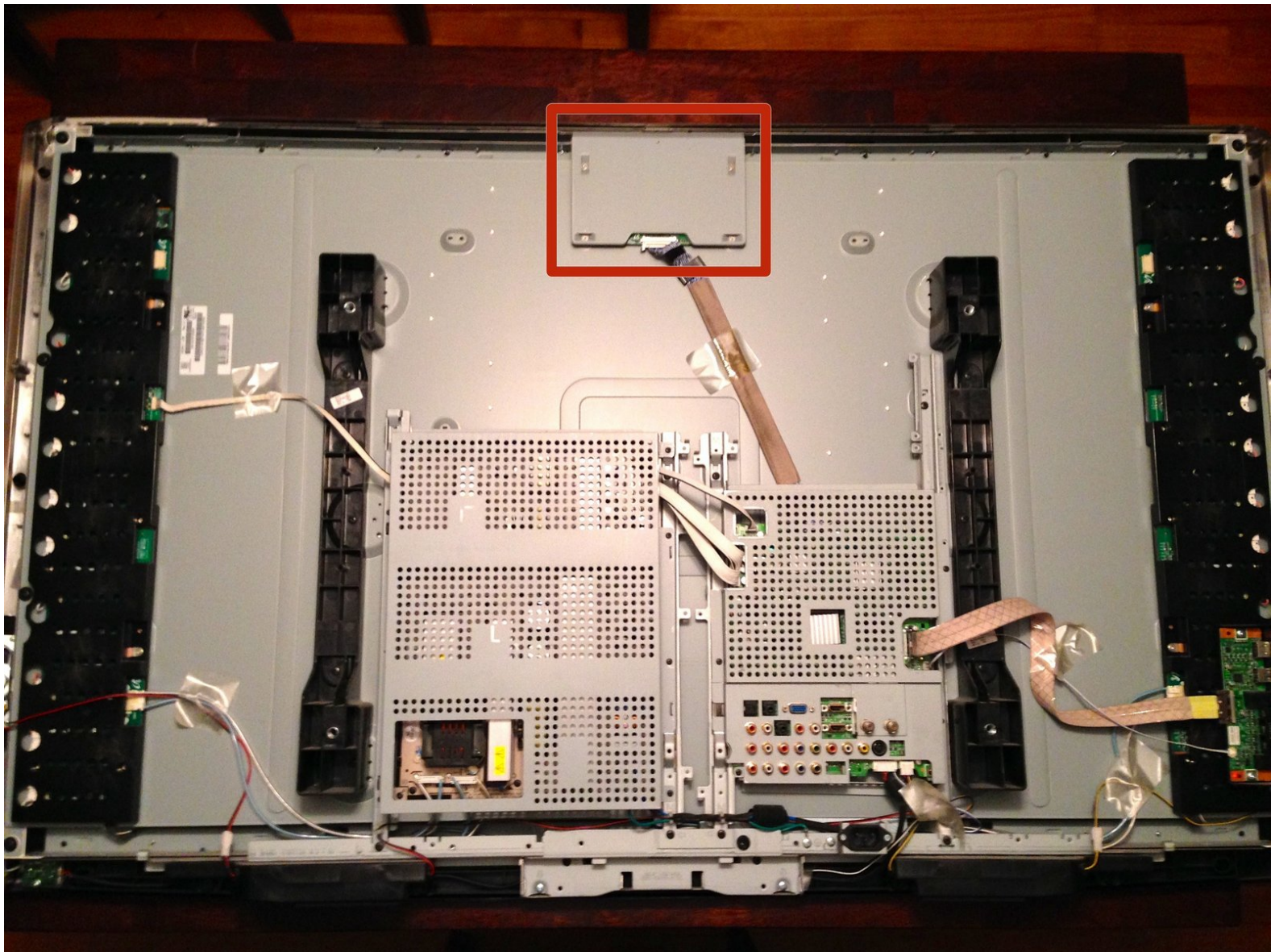




Samsung LN-T5265F T-Con Board Replacement

Written By: Steven Carlton





TOOLS:

- [Phillips #1 Screwdriver](#) (1)
-

Step 1 — Stand



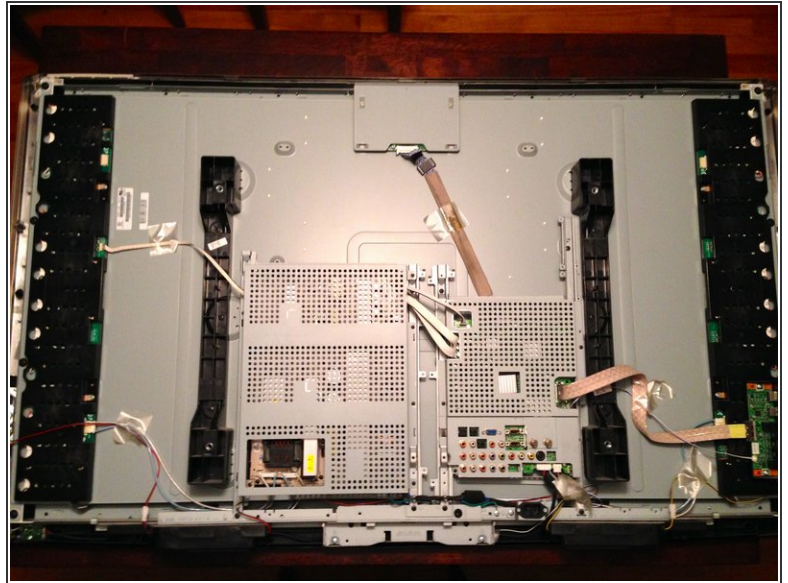
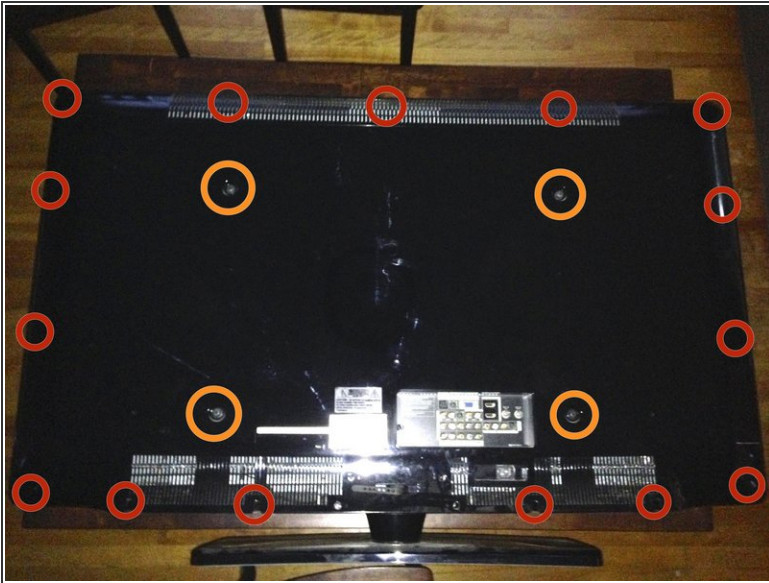
- Lay the TV screen-side down on a flat, soft surface.
- Remove four Phillips screws attaching the stand to the TV.

Step 2



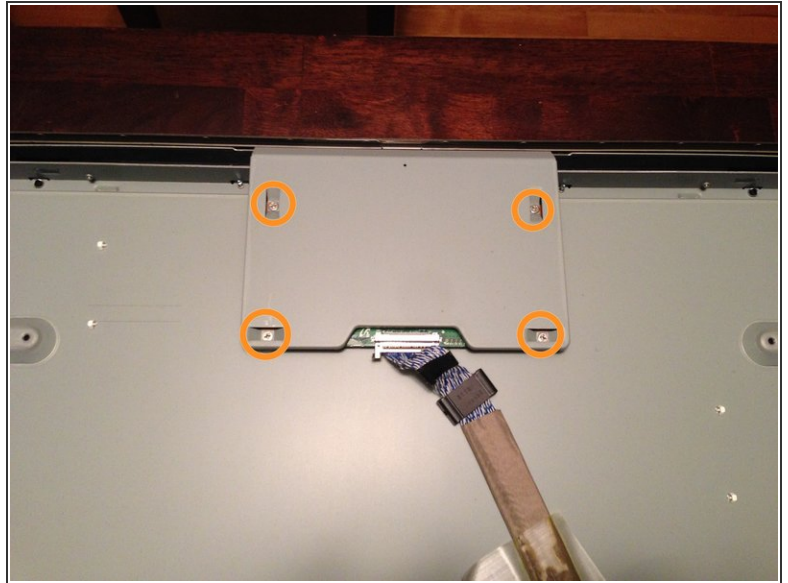
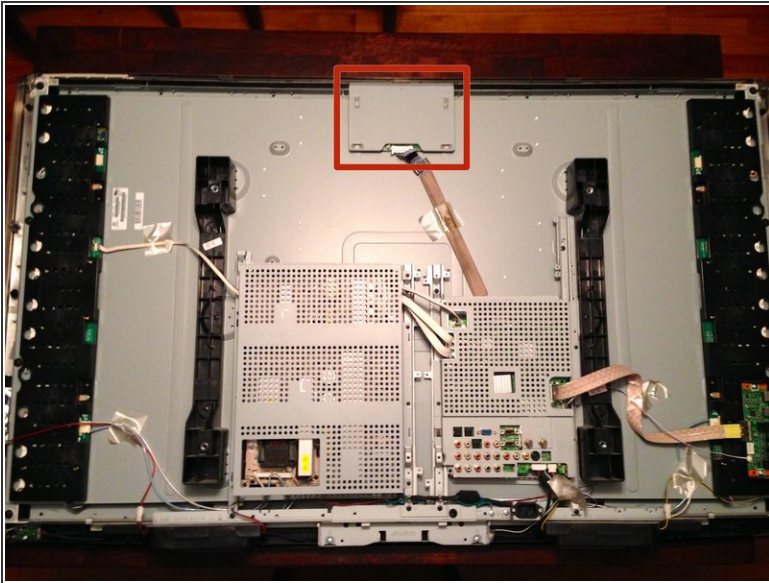
- Slide the stand out from the bottom of the TV.

Step 3 — Rear Case



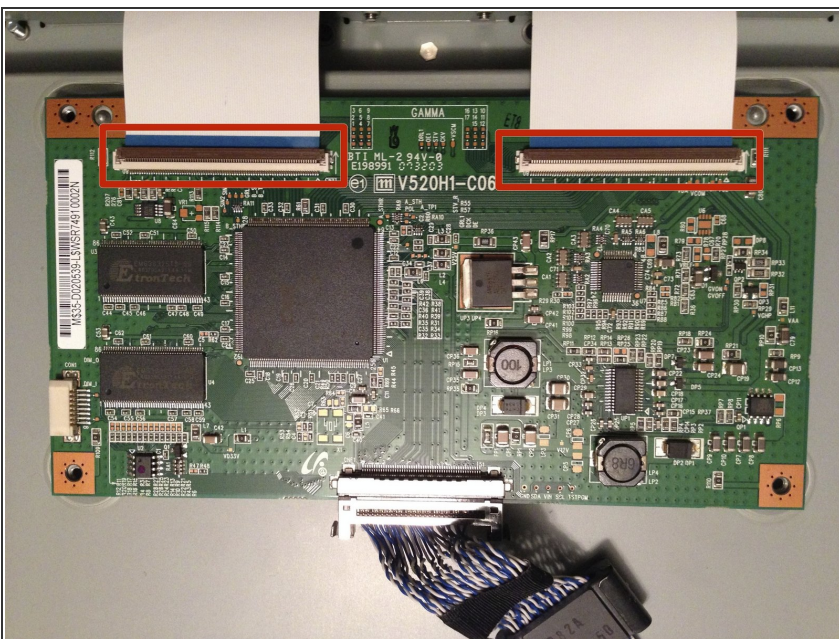
- Remove fifteen Phillips screws securing the rear case to the front.
- If present, remove four Phillips screws for the VESA mount.
- Carefully lift the rear case upwards to separate it from the frame of the TV.

Step 4 — T-Con Board



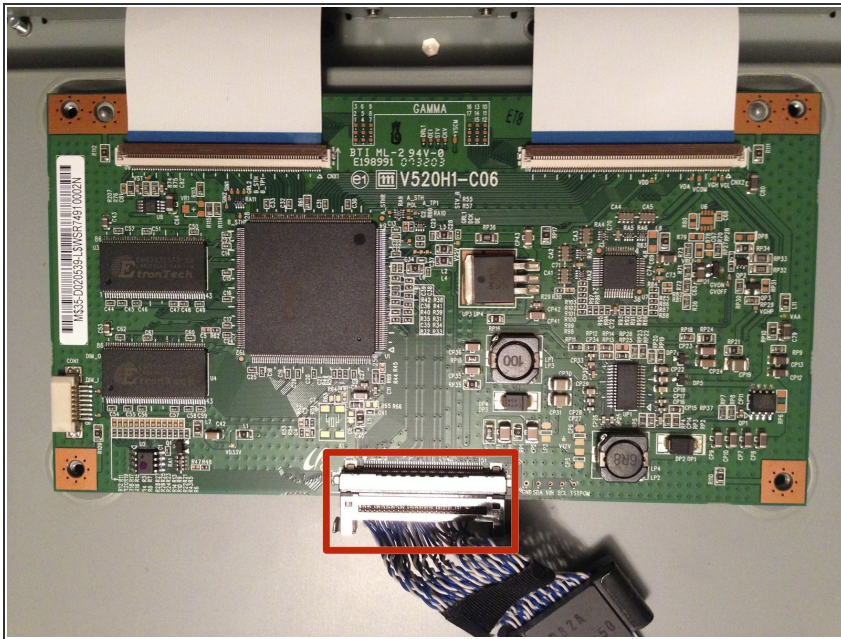
- The Timing Controller (T-Con) board is located at the top center behind a metal shield.
- Remove four Phillips screws.
- Tilt the metal shield towards the top of the TV and lift away.

Step 5



- Disconnect the two ribbon cables at the top by flipping up the retaining flaps and sliding the ribbons straight up towards the top of the TV.

Step 6



- Disconnect the bottom ribbon cable by depressing the two buttons on either side of the connector and sliding down towards the bottom of the TV.

To reassemble your device, follow these instructions in reverse order.