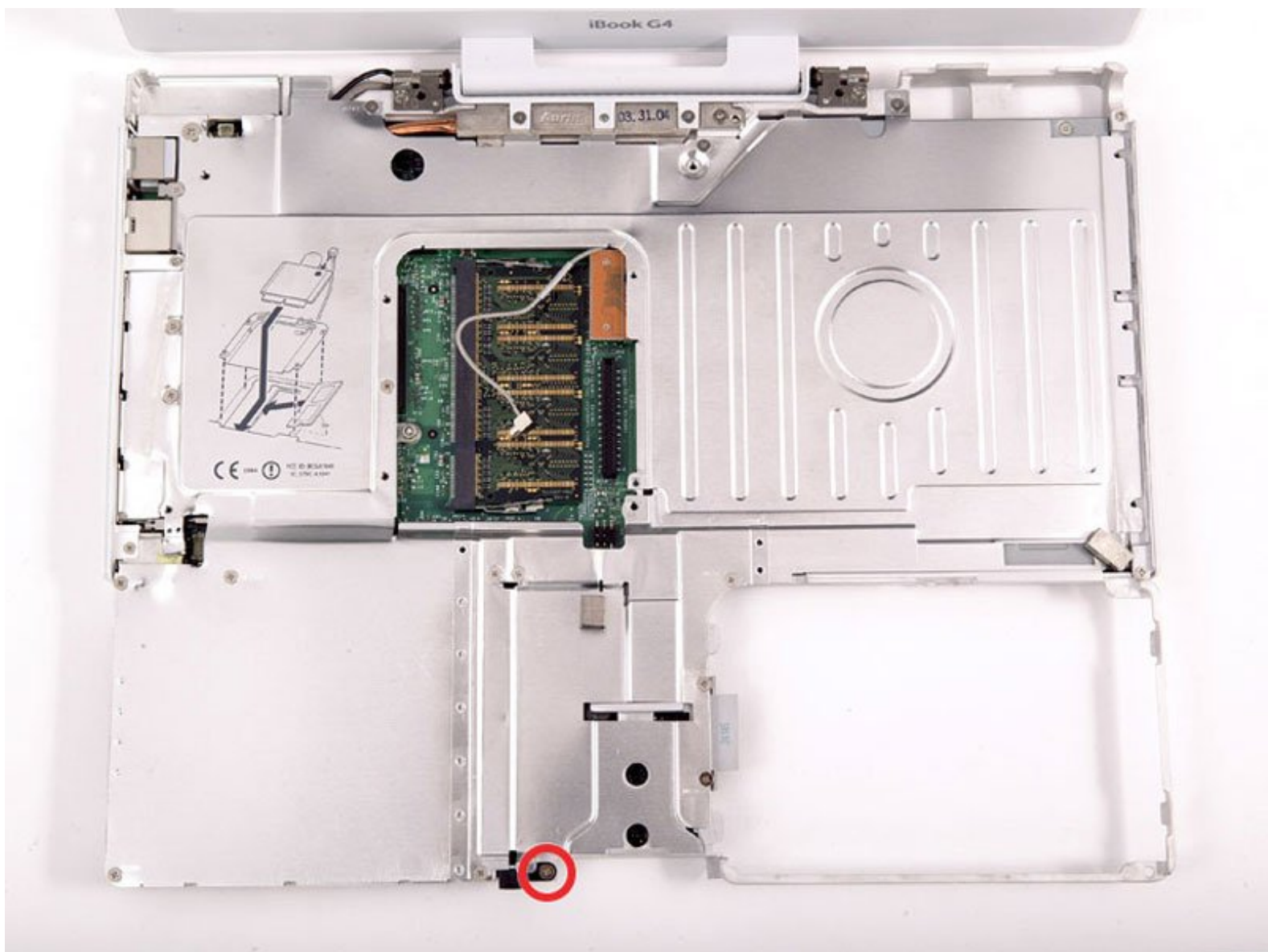




iBook G4 12" 800 MHz-1.2 GHz Sleep Light Replacement

Written By: iRobot



INTRODUCTION

Replacing the pulsing white LED sleep indicator.



TOOLS:

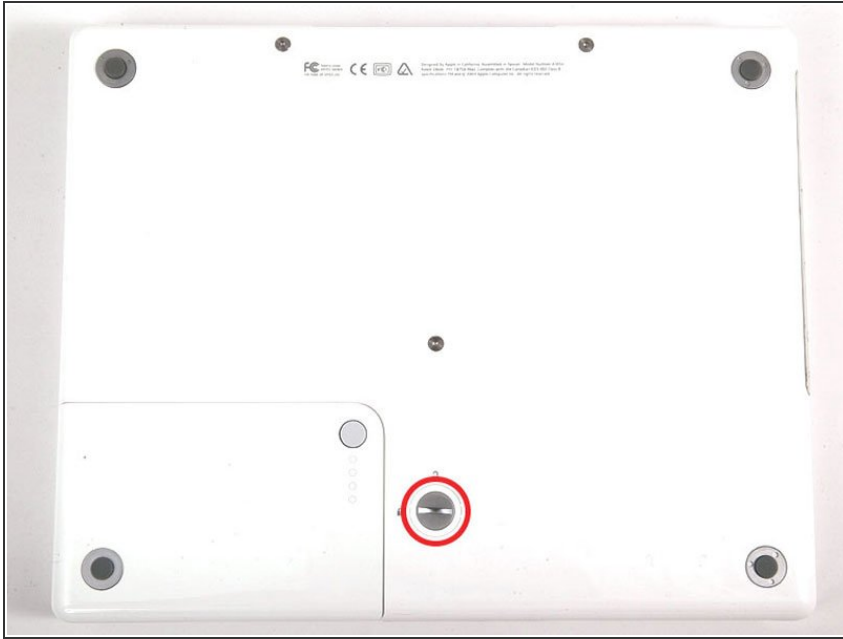
- [Coin](#) (1)
- [Phillips #00 Screwdriver](#) (1)
- [Flathead 3/32" or 2.5 mm Screwdriver](#) (1)
- [Spudger](#) (1)
- [T8 Torx Screwdriver](#) (1)



PARTS:

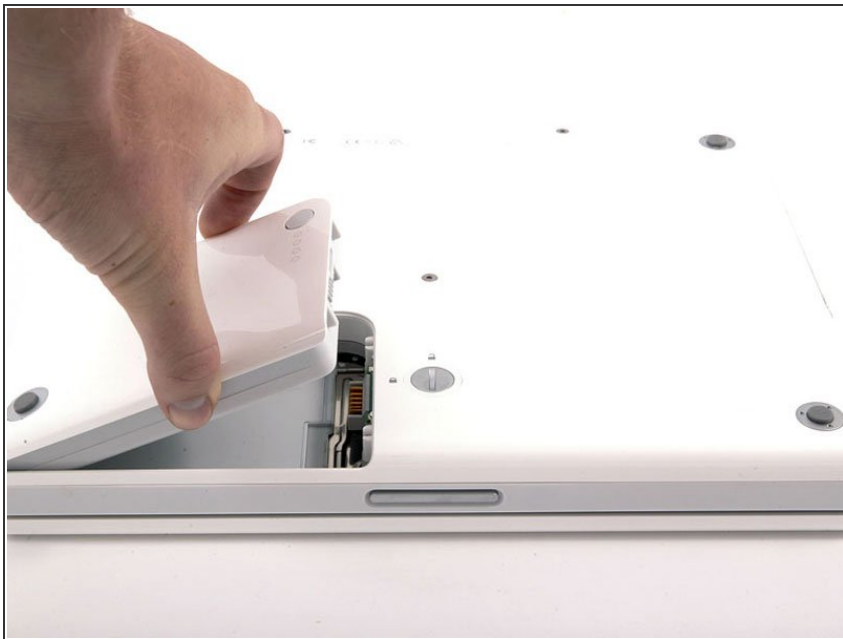
- [iBook G4 12" Sleep Light](#) (1)

Step 1 — Battery



- Use a coin to rotate the battery locking screw 90 degrees clockwise.

Step 2



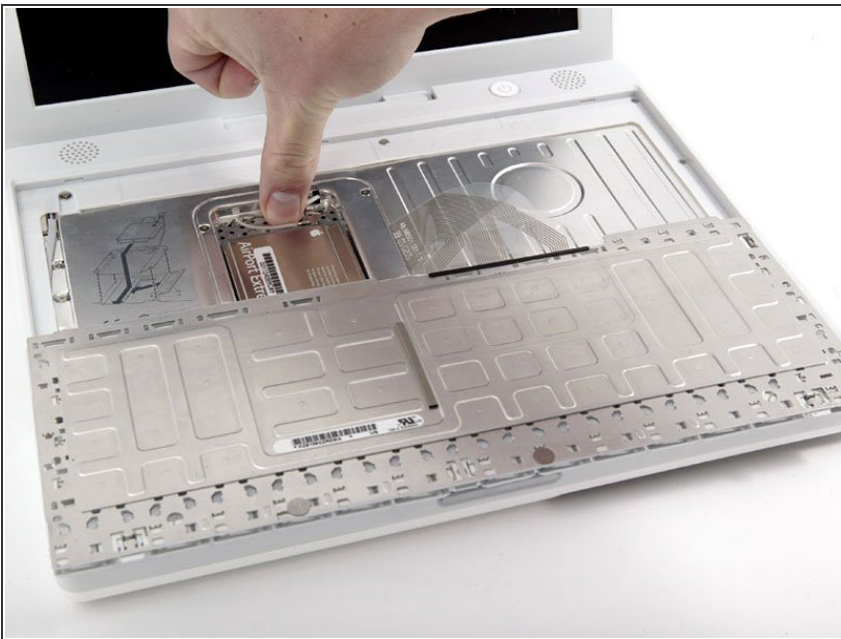
- Lift the battery out of the computer.

Step 3 — Keyboard



- Pull the keyboard release tabs toward you and lift up on the keyboard until it pops free.
- ⓘ If the keyboard does not come free, use a small flathead screwdriver to turn the keyboard locking screw 180 degrees in either direction and try again.
- Flip the keyboard over, away from the screen, and rest it face-down on the trackpad area.

Step 4



- ⓘ If the computer has an AirPort card installed, follow the next three steps to remove it.
- Push the wire clasp away from the AirPort card and toward the display, then rotate up to free it from the RAM shield.

Step 5



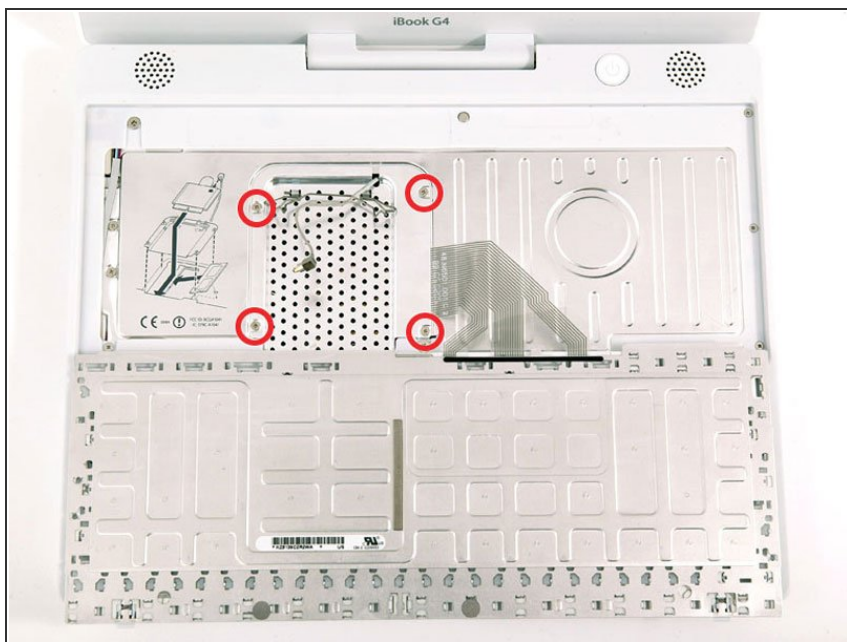
- Grasp the clear plastic tab on the AirPort card and pull toward the display.

Step 6



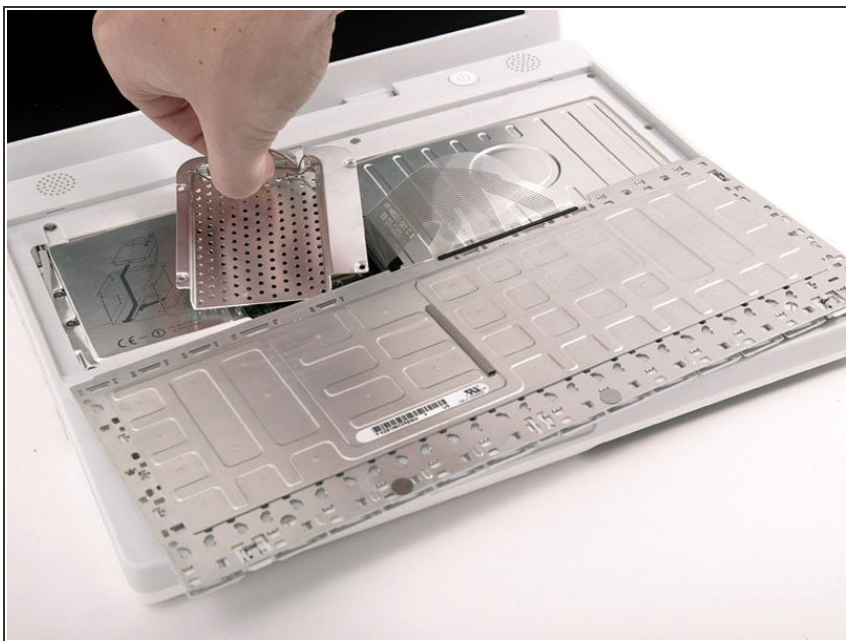
- Hold the AirPort card in one hand and use your other hand to remove the antenna cable.

Step 7



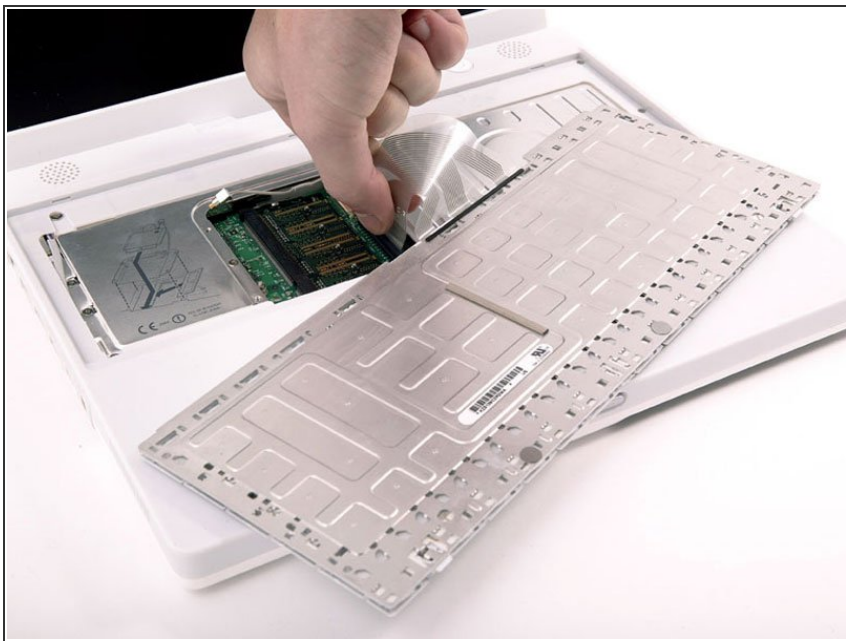
- Remove the four silver Phillips screws that secure the RAM shield.

Step 8



- Grasp the metal bracket on top of the RAM shield and pull upward to remove the shield.

Step 9



- Pull the keyboard cable up from the logic board, holding the cable as close to the connector as possible.
- ★ Make sure that you reconnect the keyboard cable before replacing the RAM shield.

Step 10 — Lower Case



- Use a pin (or anything you like) to remove the three rubber feet from the lower case.

Step 11



- Remove the three newly-revealed Phillips screws.

Step 12



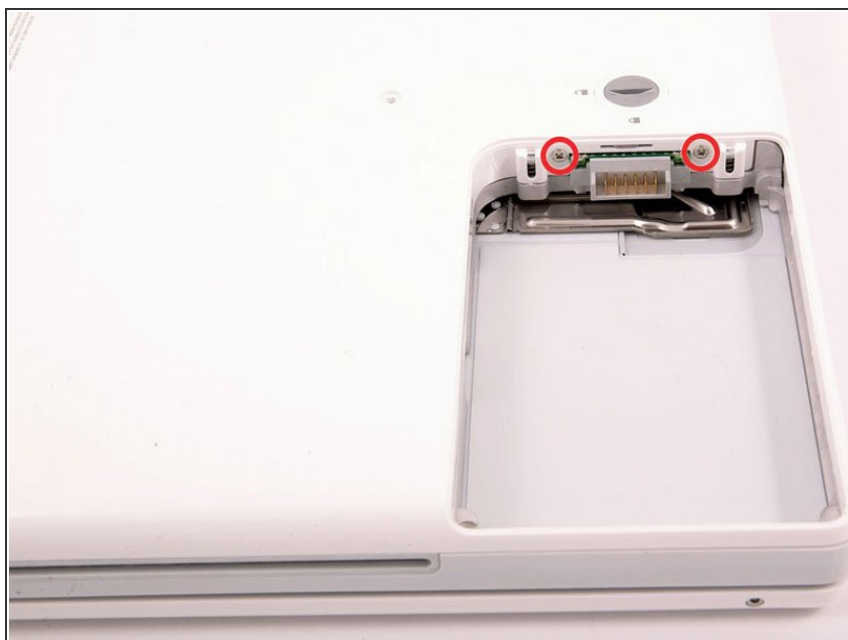
- Use a spudger or small flathead screwdriver to pry up the three metal rings that housed the rubber bumpers.

Step 13



- Remove the three Torx screws using a T8 Torx screwdriver.
- ★ The shorter screw is in the center of the computer.

Step 14



- Remove the two Phillips screws on either side of the battery contacts.

Step 15



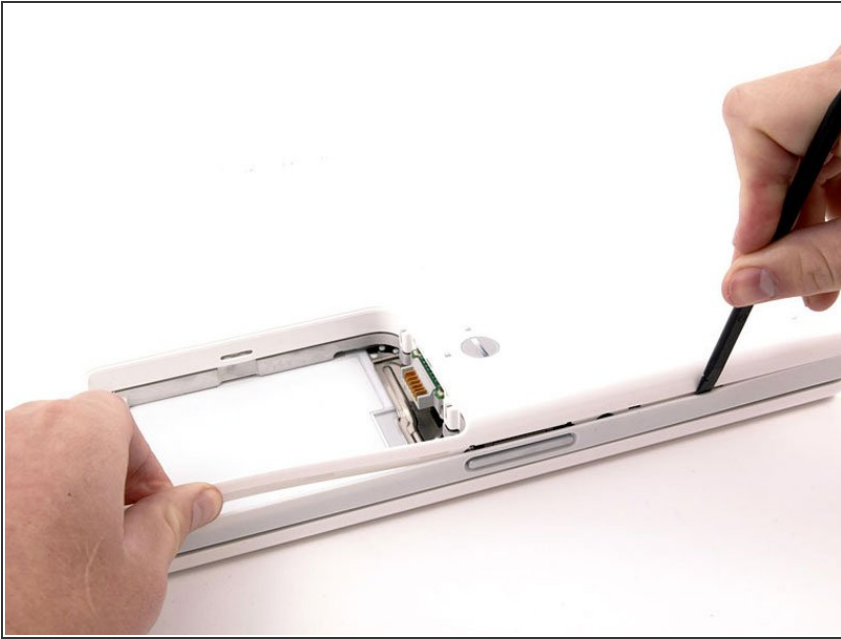
- ❗ Breathe deeply. Trying times are ahead, but we promise the lower case does come off.
- Push the thin rims of the lower case surrounding the battery compartment in, bending them past the tabs, and then lift up to free that corner of the lower case.

Step 16



- There is a slot on the wall of the battery compartment that locks the lower case in place. Use a small flathead screwdriver to pry out the slot's lower rim and pull up on the lower case to free the slot from the tabs holding it.

Step 17



- Run a spudger along the seam between the lower case and upper case on the front of the computer to free the tabs locking the lower case. Pull up on the lower case and continue to use the spudger as necessary until you hear three distinct clicks.

Step 18



- Continue to run the spudger around the front, right corner. There are two tabs on the port side of the computer, one near the front corner and one near the sound-out port.

Step 19




- There are three tabs over the optical drive that must be released before the lower case can come off. Slide the spudger into the lower case above the optical drive and run it toward the back of the computer until you hear three distinct clicks.

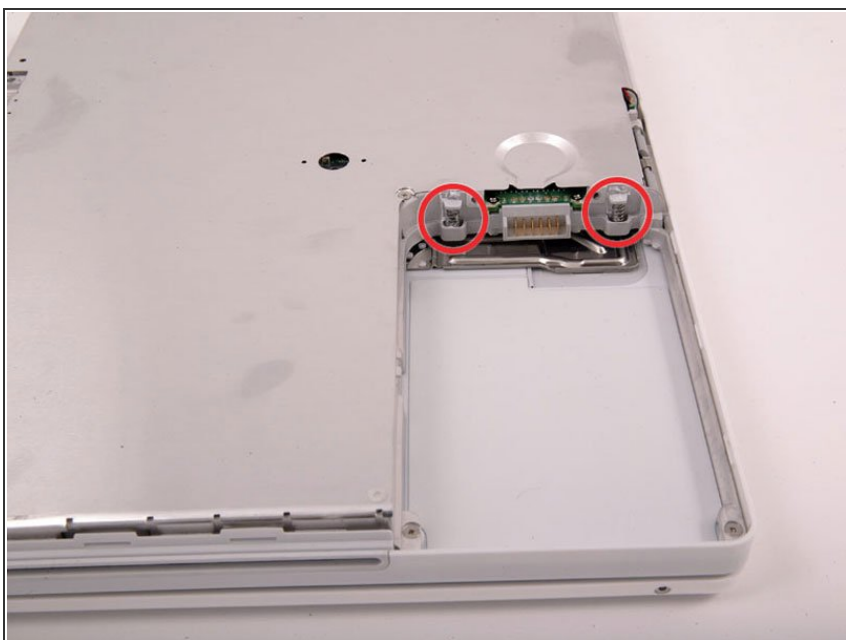
Step 20



- Once the front and sides of the lower case are free, turn the computer so that the back is facing you and pull the lower case up and away from you until the back tabs pop free.

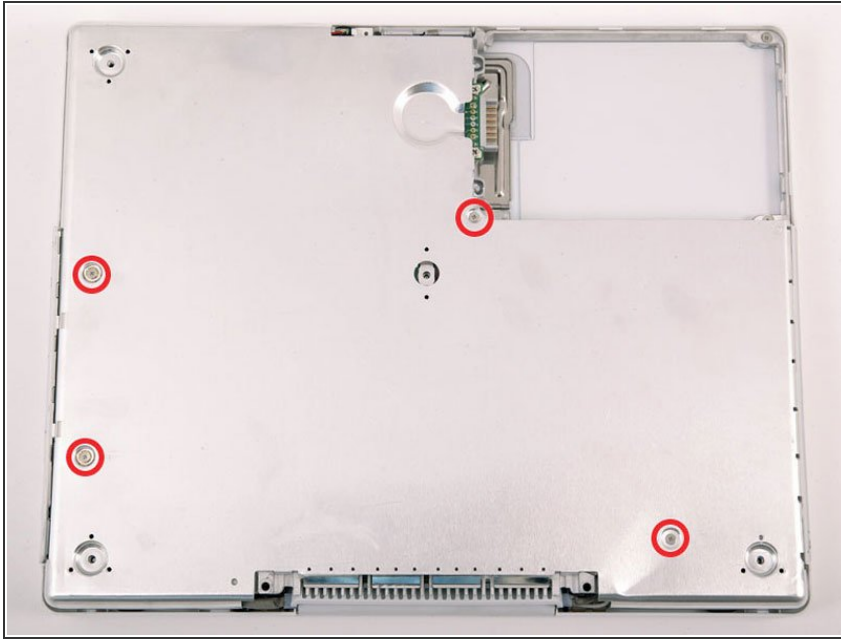
 it may be helpful to jiggle the case up and down.

Step 21



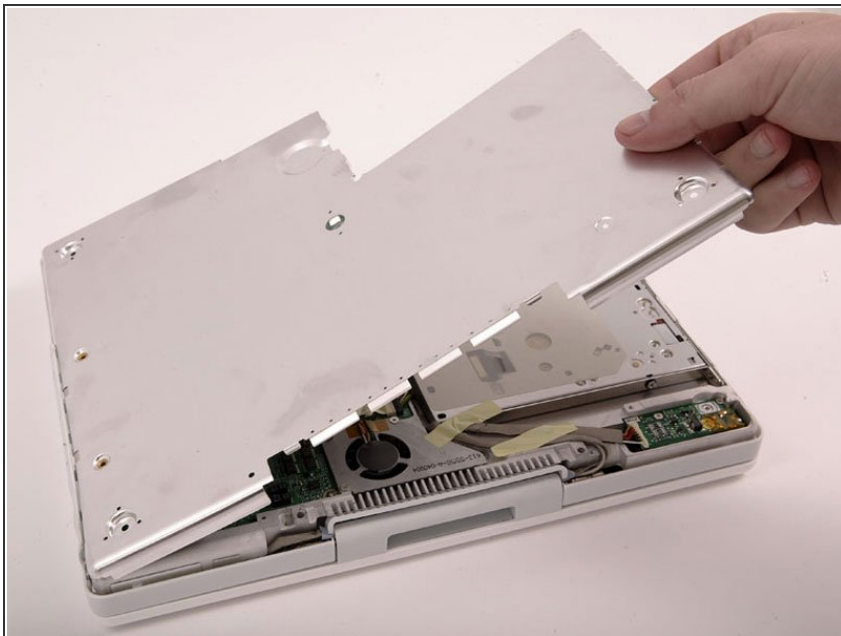
- Remove the small greasy springs with white plastic caps from either side of the battery contacts.

Step 22 — Bottom Shield



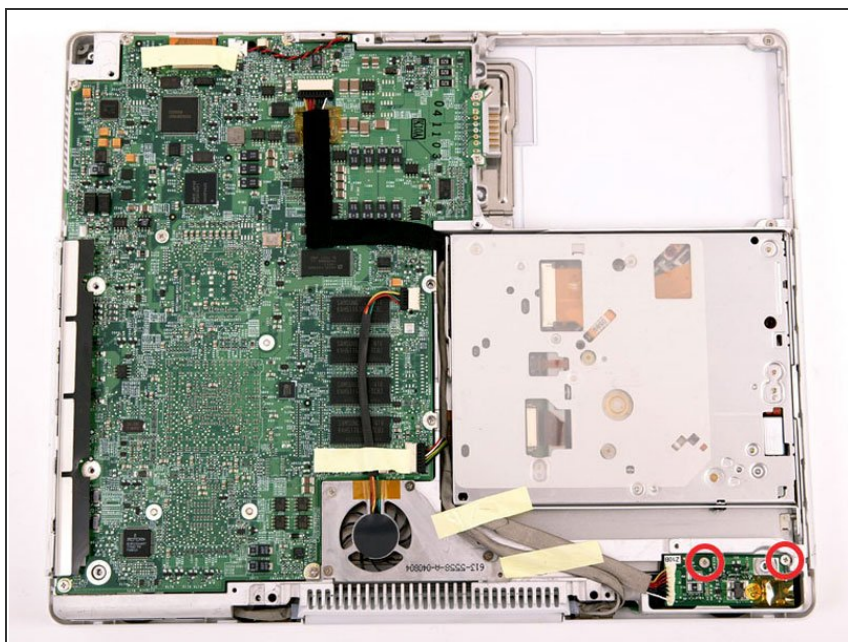
- Remove the 4 Phillips screws from the bottom shield.
- ⓘ The two longer screws are along the computer's edge, near the ports.

Step 23



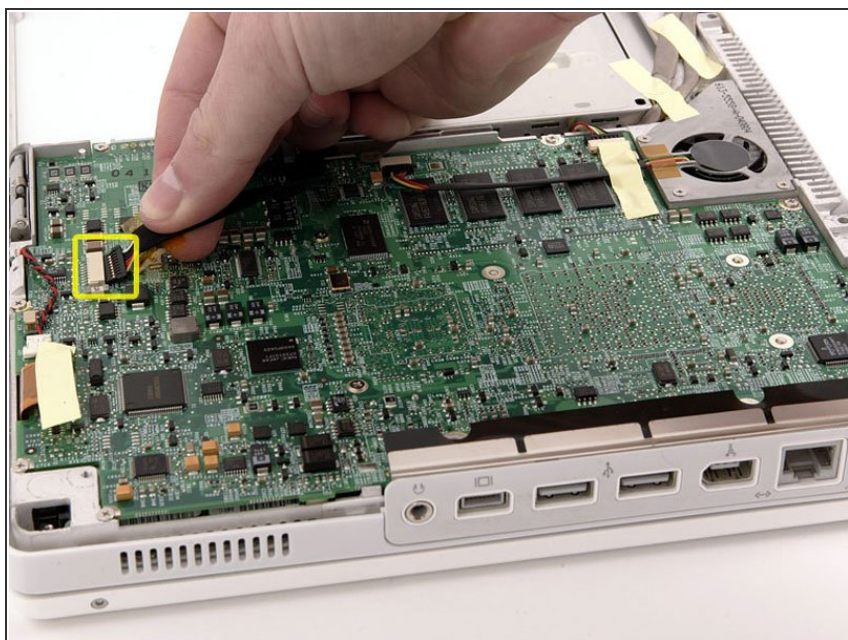
- Lift the bottom shield off.

Step 24 — DC-In Board



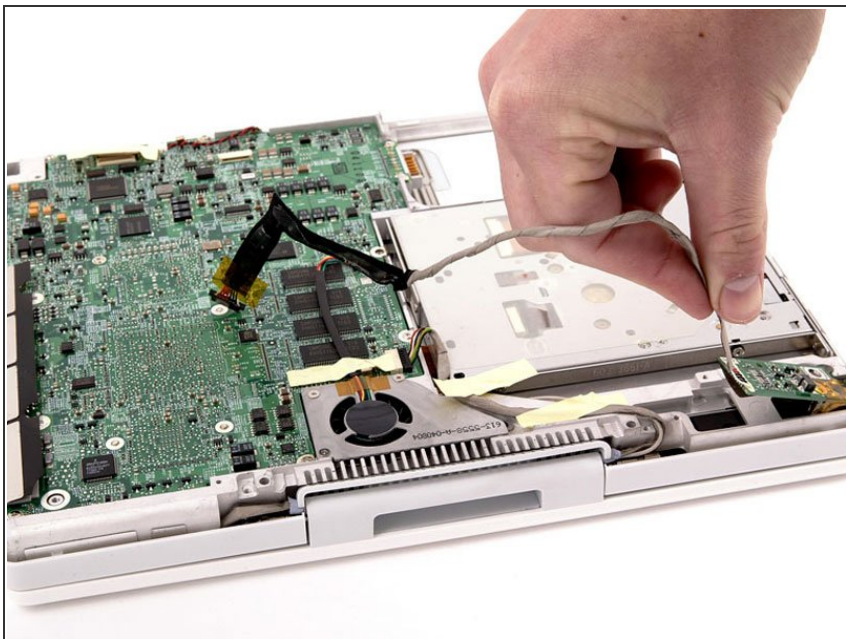
- Remove the two Phillips screws securing the DC-In board.

Step 25



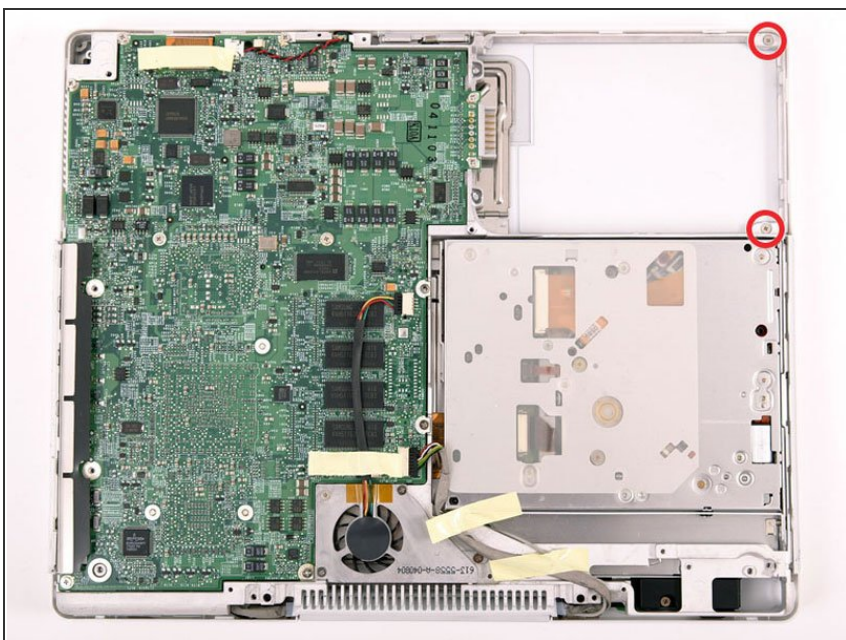
- Disconnect the DC-In cable from the logic board.

Step 26



- Deroute the cable from around the optical drive, removing tape as necessary, and angle the DC-In board out of its compartment.

Step 27 — Upper Case



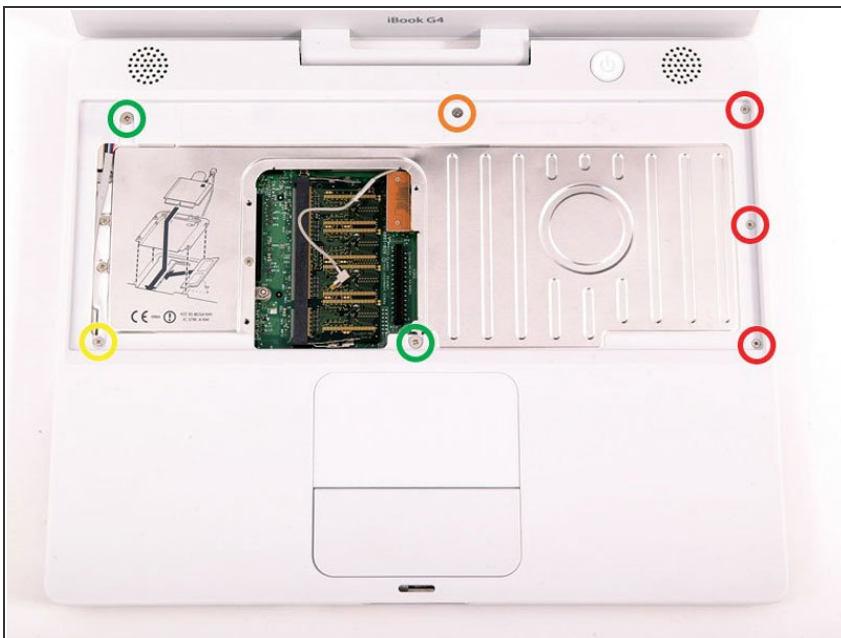
- Remove the two Phillips screws from the battery compartment.

Step 28



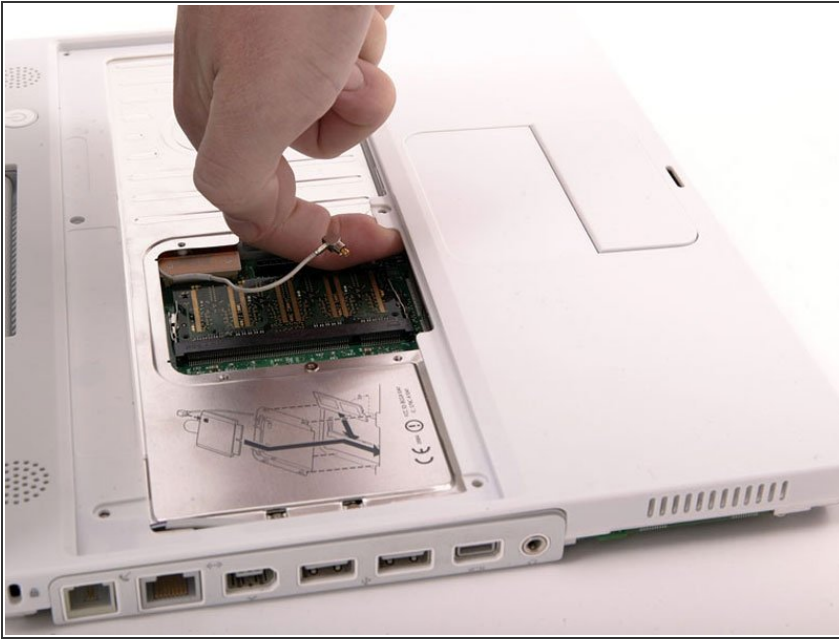
- i We recommend placing the computer on a slab of grey anti-static packing foam from this point on to prevent damaging the logic board.
- Turn over the computer and open it.
- Pry up the magnet covering a Phillips screw near the middle of the computer.

Step 29



- Remove the following 7 screws from the edges of the keyboard area.
 - Three 2 mm Phillips along the right edge.
 - One 4.5 mm Phillips underneath where the magnet was.
 - One 6 mm Phillips with a small head in the lower left corner.
 - Two 6 mm Phillips with large heads, one in the upper left corner and one in the middle

Step 30



- i** Before you can yank the upper case off, you must disconnect the trackpad connector, the blue and white power cable, and speaker cable as described in the next steps.
- Lift the upper case from the right side and use a spudger or your finger to disconnect the trackpad connector hidden beneath the white plastic tab. Due to model variations your trackpad connector may be different from the one pictured.


Step 31



- Carefully lift the upper case about half of an inch and move it so that you can access the power and speaker cables.
- i** If the upper case is sticking, it may be necessary to free the tabs holding the upper case to the metal framework along the outer edge of the battery compartment.

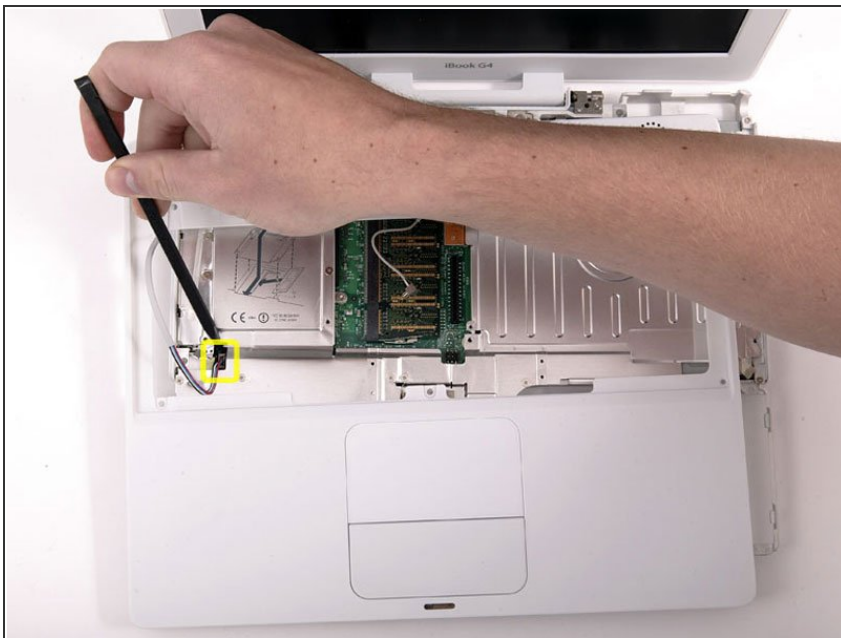
Step 32



 The connectors at the ends of the cables are attached very firmly to the sockets on the logic board. Pulling directly on the cable will either separate the cable from its connector or the socket from the logic board.

- Lift the upper case enough to disconnect the blue and white power cable from the logic board. Using your fingernails or a dental pick, carefully pry the connector from its socket. Make sure you're pulling only on the connector and not on the socket.

Step 33

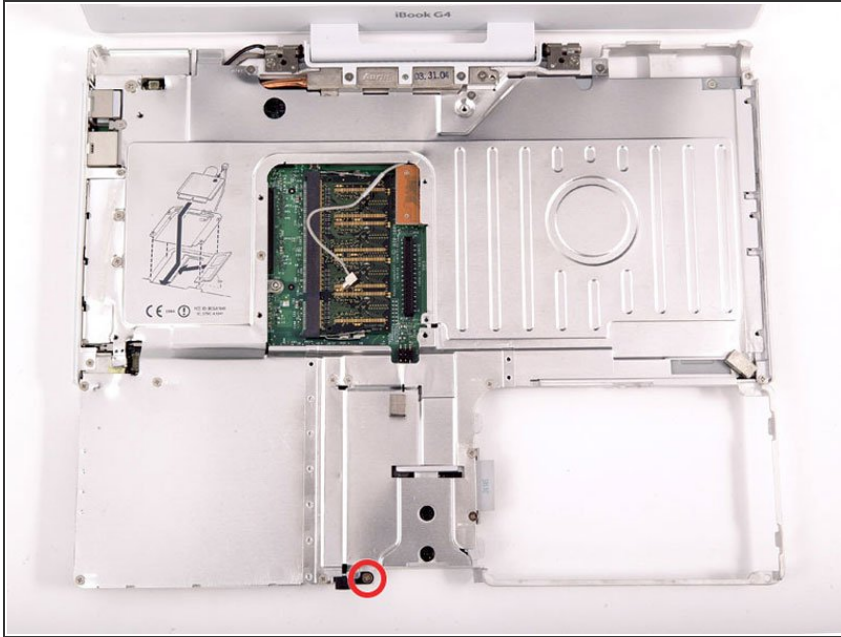


- Lift the upper case off completely and disconnect the multicolored speaker cable from the logic board. As before, make sure you're pulling only on the connector and not on the socket.

- ① Tip: the multi-coloured cable may be easier and less daunting to disconnect after removing the top heat shield. Prop the top case

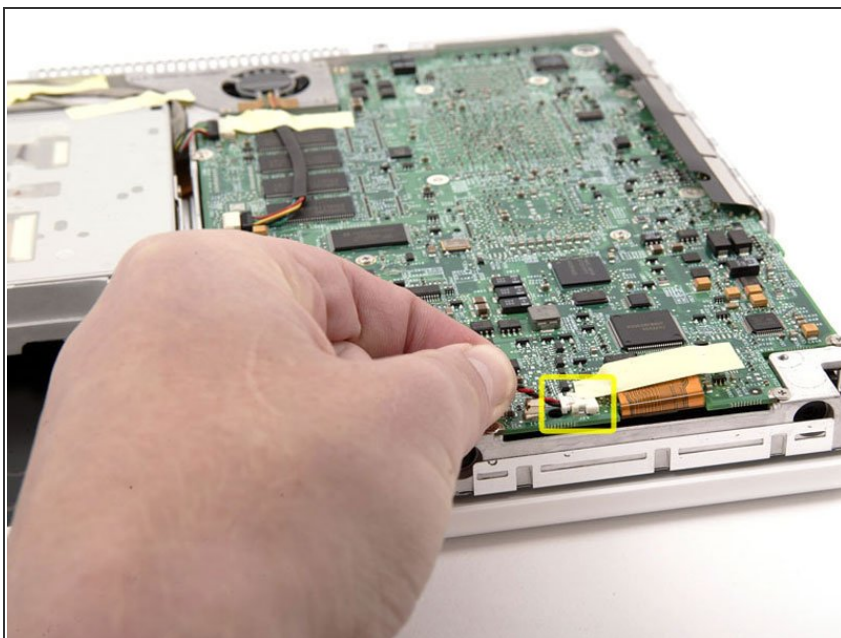
upright while removing the shield - the connector is then much more accessible.

Step 34 — Sleep Light



- Remove the single Phillips screw securing the sleep light to the metal framework.

Step 35



- Turn the computer over and disconnect the sleep light from the logic board.

To reassemble your device, follow these instructions in reverse order.