



Archived

Canon PowerShot SD850 IS Housing Replacement

This guide is for accessing the cameras...

Written By: iDeleted



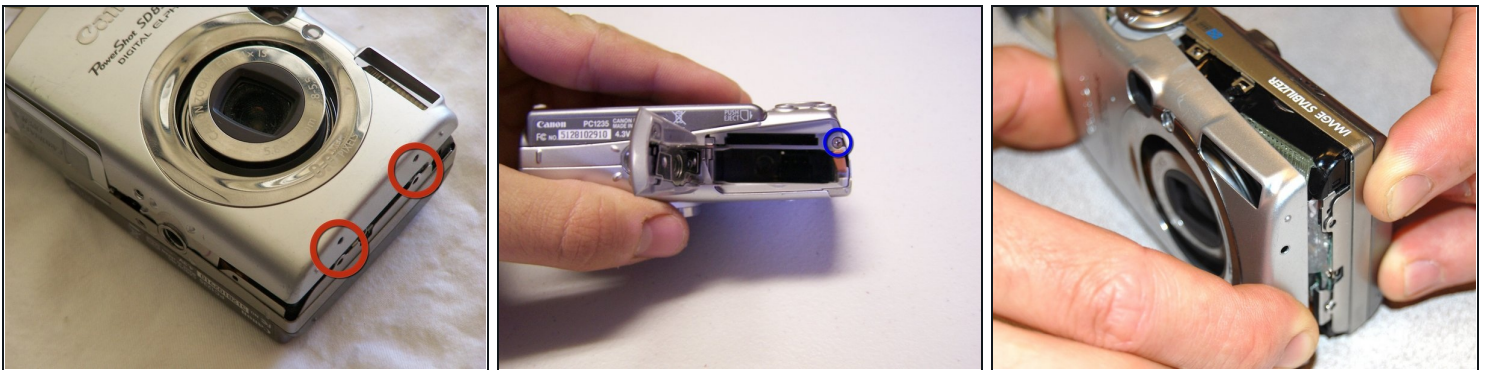
INTRODUCTION


This guide is for accessing the cameras internal components for repairs and troubleshooting.

TOOLS:

Phillips #00 Screwdriver (1)

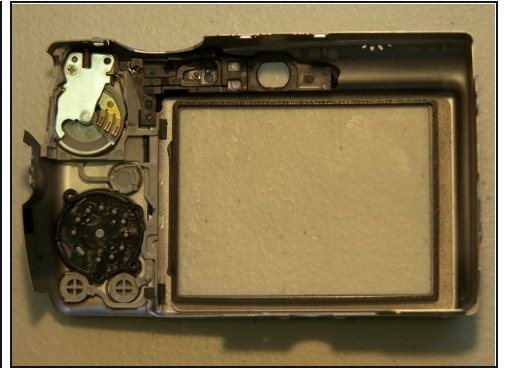
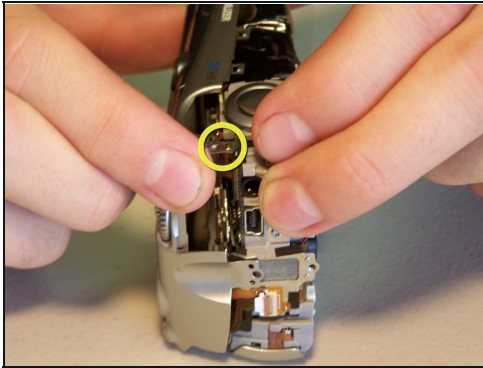
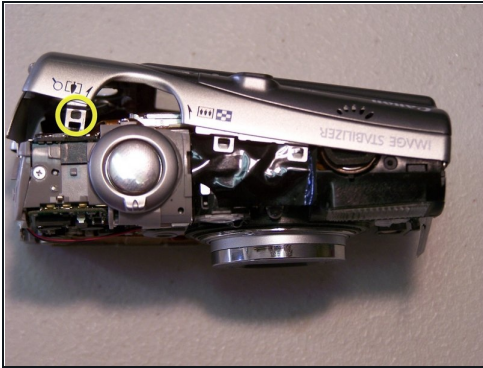
Step 1 — Housing



 To avoid severe electric shock do not remove or tamper with internal camera flash components. An electrical capacitor is attached to the flash that can discharge if contact is made.

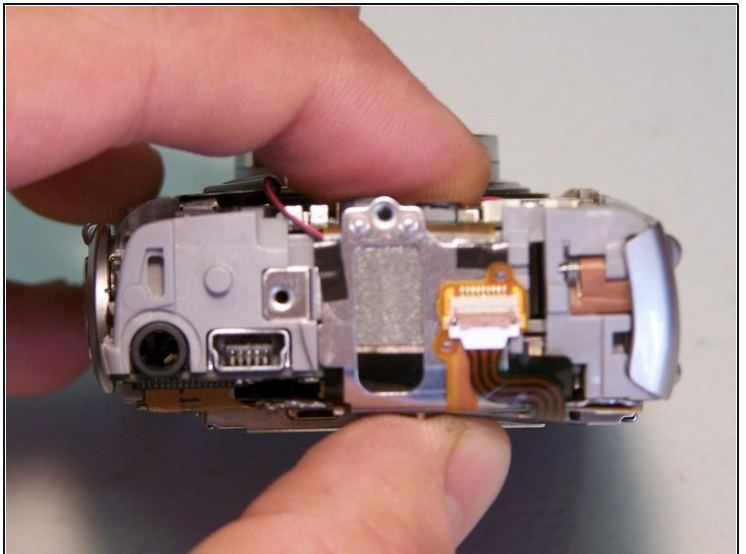
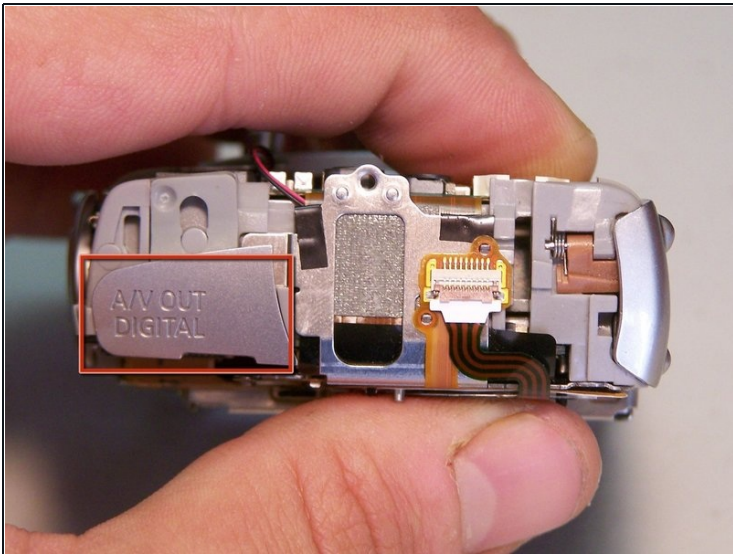
- Remove the two side screws, indicated by the red circles, using a Phillips #00 screwdriver.
- Remove the screw in the battery port, indicated by the blue circle, again using a Phillips #00 screwdriver.
- Remove the front face by gently peeling the housing away from the camera.

Step 2



- Remove the back face by using a spudger to lift the tab highlighted in yellow
- Pivot the back face clockwise as seen in the second photo.

Step 3



- Remove the A/V port cover [no tools are necessary]

To reassemble your device, follow these instructions in reverse order.