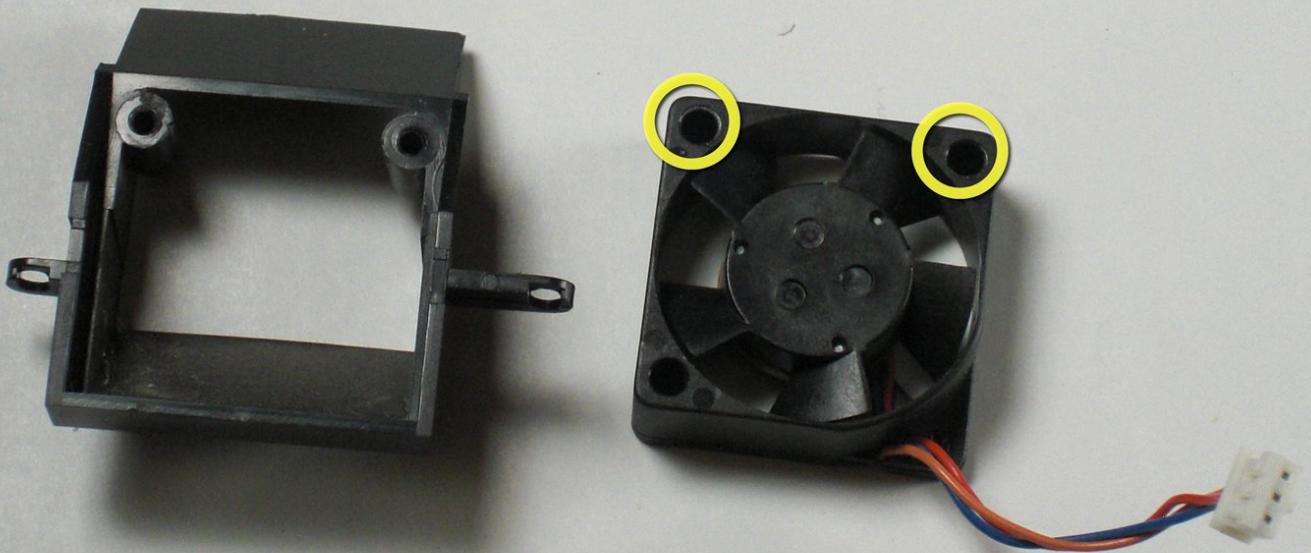




Sega Dreamcast Fan Replacement

Written By: Thor686



INTRODUCTION

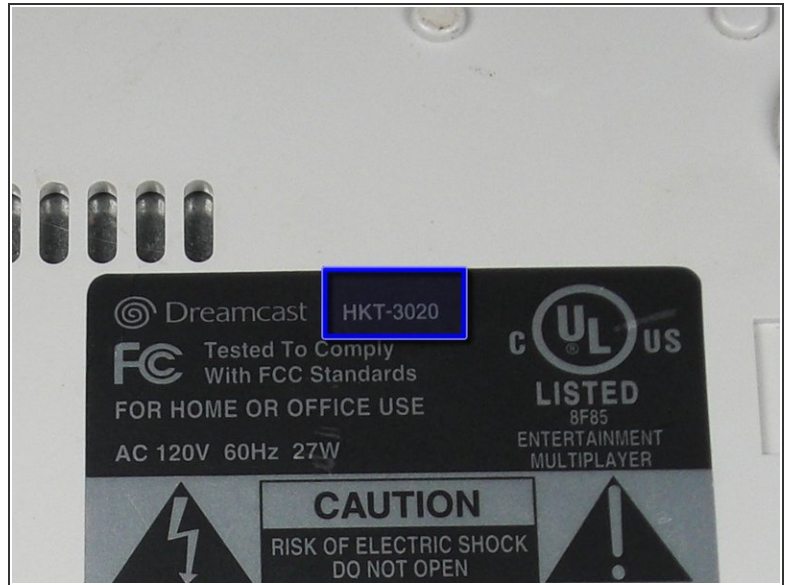
This guide details how to replace a malfunctioning fan in the Sega Dreamcast.

Be sure to replace the fan with one corresponding to your Model Number. Refer to the [Top Cover Disassembly Guide](#) for instructions on where to find your model number.

TOOLS:

- [Phillips #2 Screwdriver](#) (1)
 - [Phillips #00 Screwdriver](#) (1)
 - [Phillips #1 Screwdriver](#) (1)
-

Step 1 — Expansion Bay



⚠ Verify that the console is disconnected from the AC outlet before you begin.

- Flip the console over on its back.
- Take note of your model number , in case replacement parts are needed.

Step 2



- Remove the expansion bay by applying pressure to the small clip on the expansion bay while prying it away from the console.

Step 3 — Top Cover



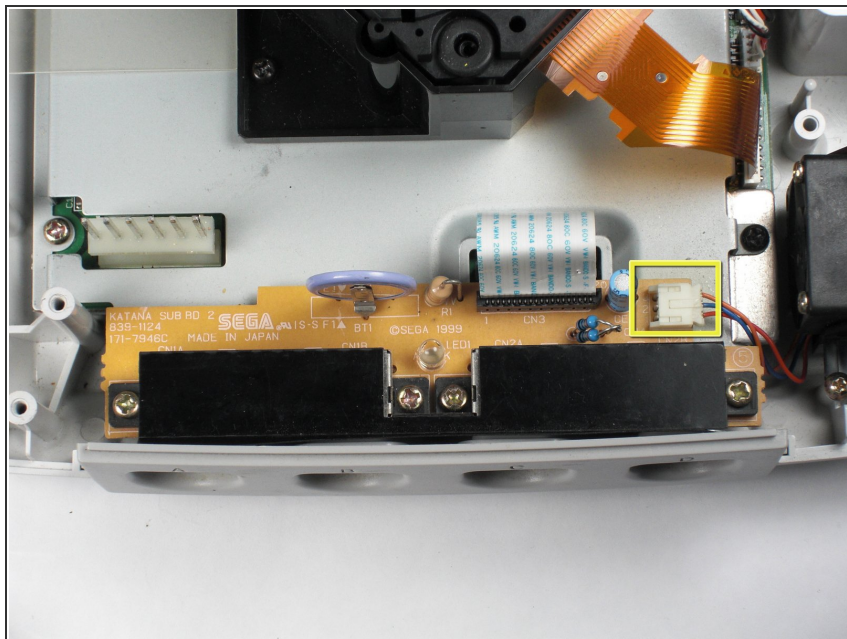
- **Locate and remove all four black 12mm Phillips #02 screws** from the underside of the console.
- ⓘ **Note:** Remove the expansion bay to locate the fourth screw

Step 4



- ⚠ **Internal components can be loose.** Be careful that they do not fall out when removing the cover.
- Turn the console right side up.
- **Remove the top cover** by gently lifting the upper portion of the console.

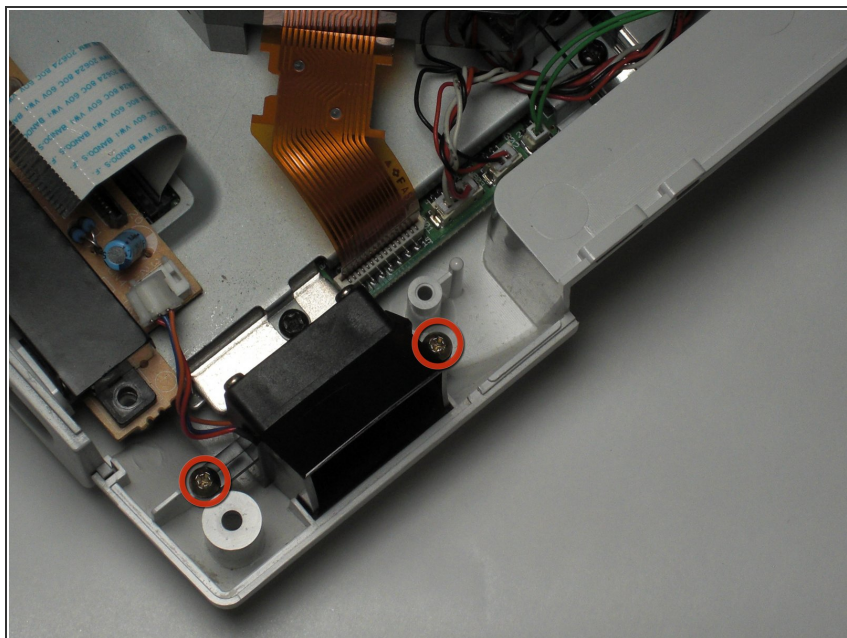
Step 5 — Fan



- **Remove the white fan header** by gently pulling it away from the controller port.

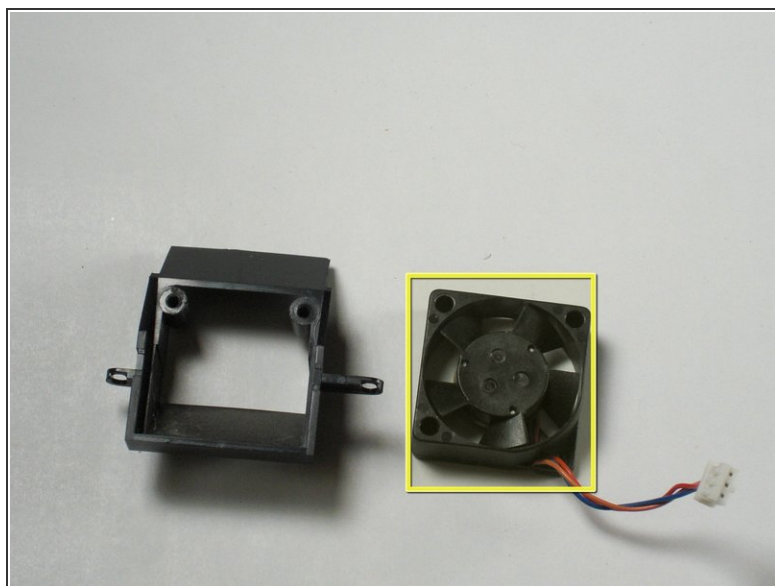
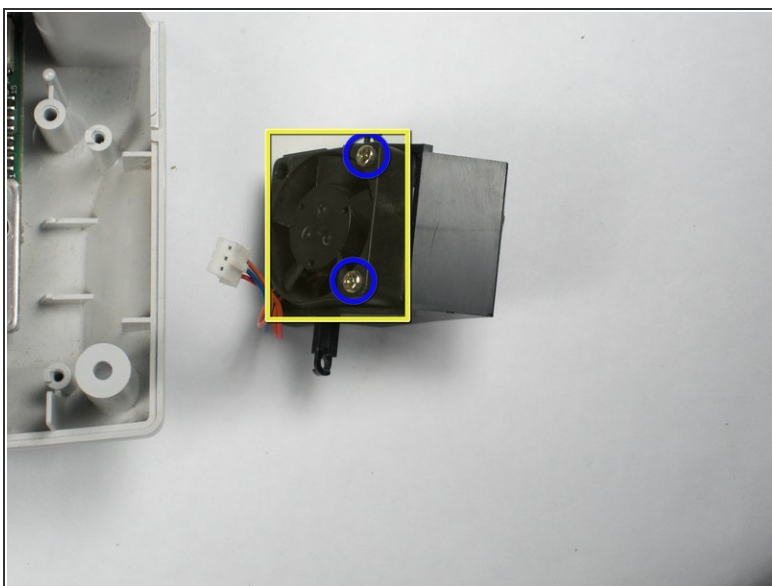
ⓘ The white fan header may already be detached if you have completed the [Controller Port Disassembly Guide](#).

Step 6



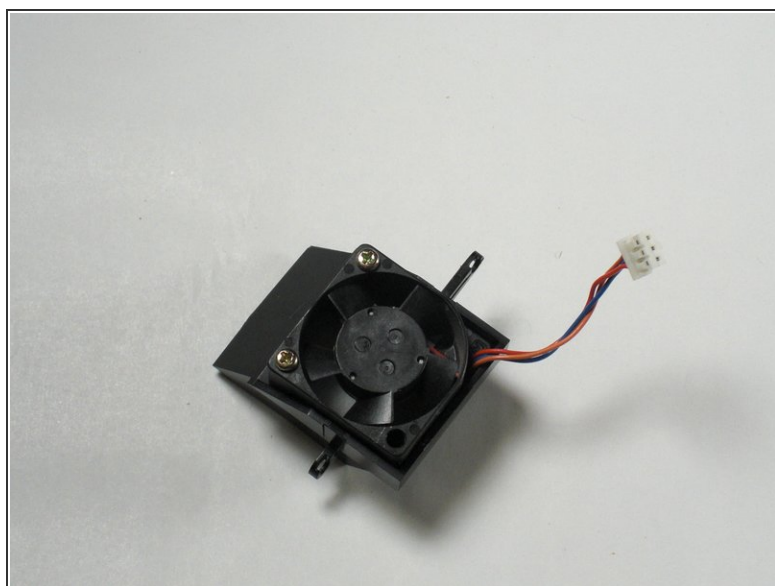
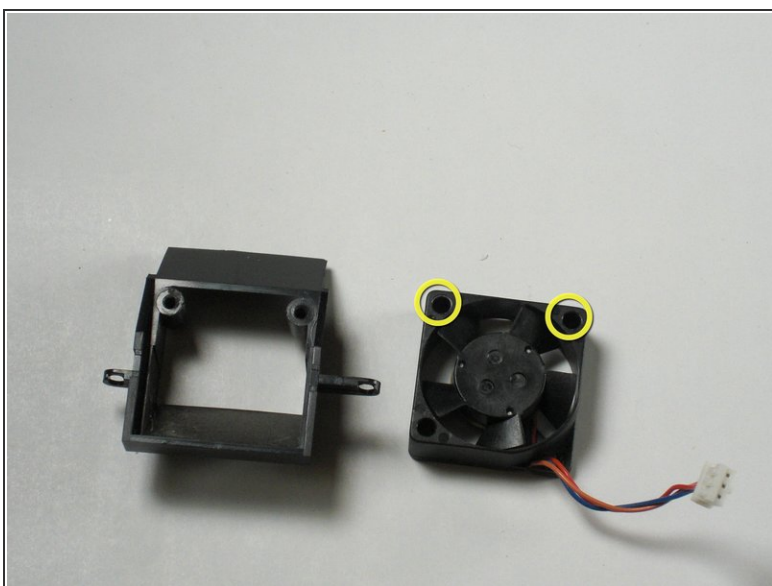
- **Remove the two 8.5mm Philips #00 screws** from the fan bracket.

Step 7



- Remove the two 17.5mm Philips #00 screws from the fan bracket.
- Remove the fan from the bracket.

Step 8 — Fan



- Connect the new fan to the fan bracket using two 17.5mm Philips #00 screws.
- Replace the fan bracket in the Dreamcast using two 8.5mm Philips #00 screws.

To reassemble your device, follow these instructions in reverse order.