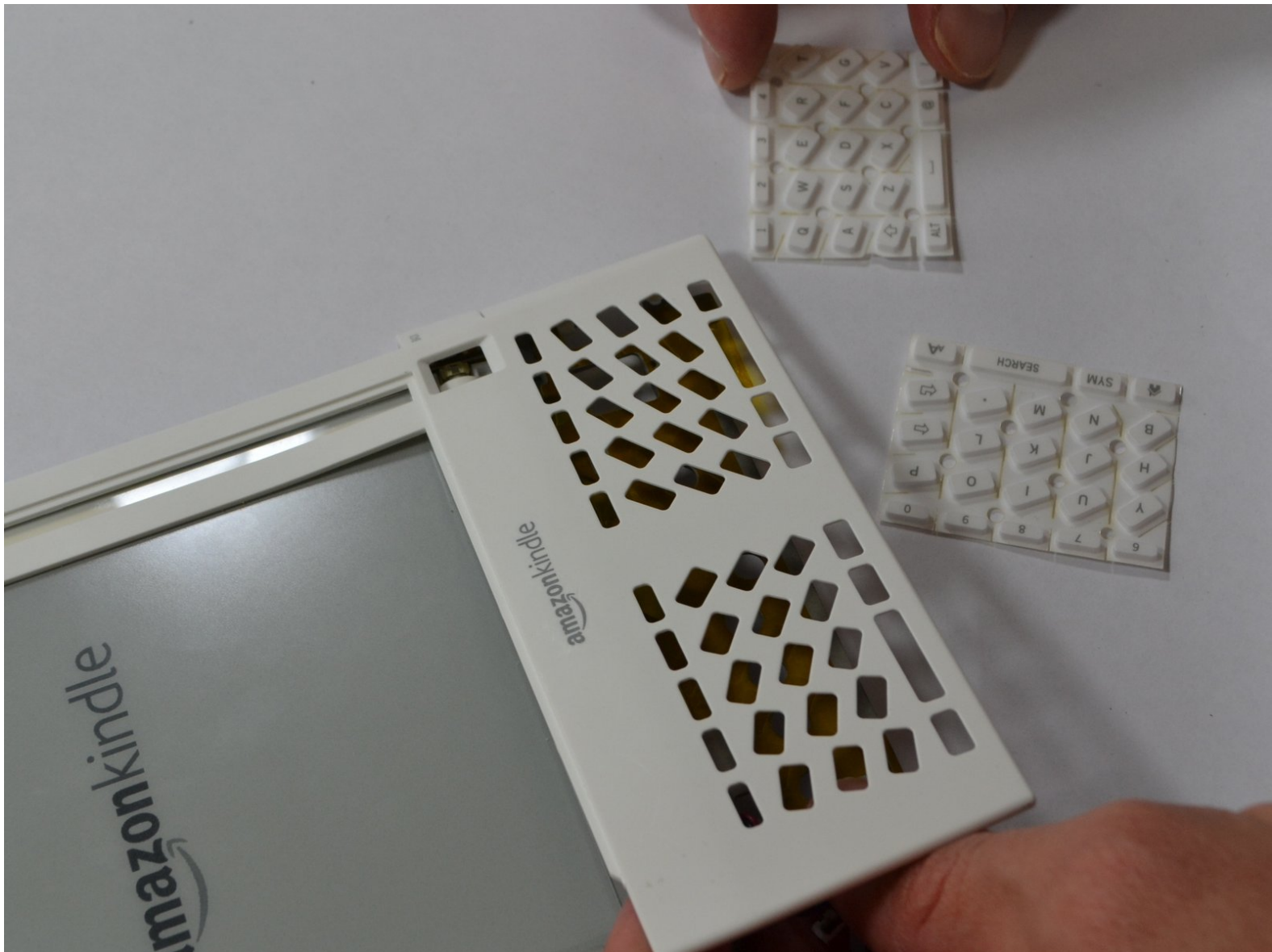




Kindle 1st Generation Keyboard/Buttons Replacement

This guide covers the basic steps to replace the buttons of the keyboard on the First Generation Amazon Kindle.

Written By: Samantha Manning



INTRODUCTION

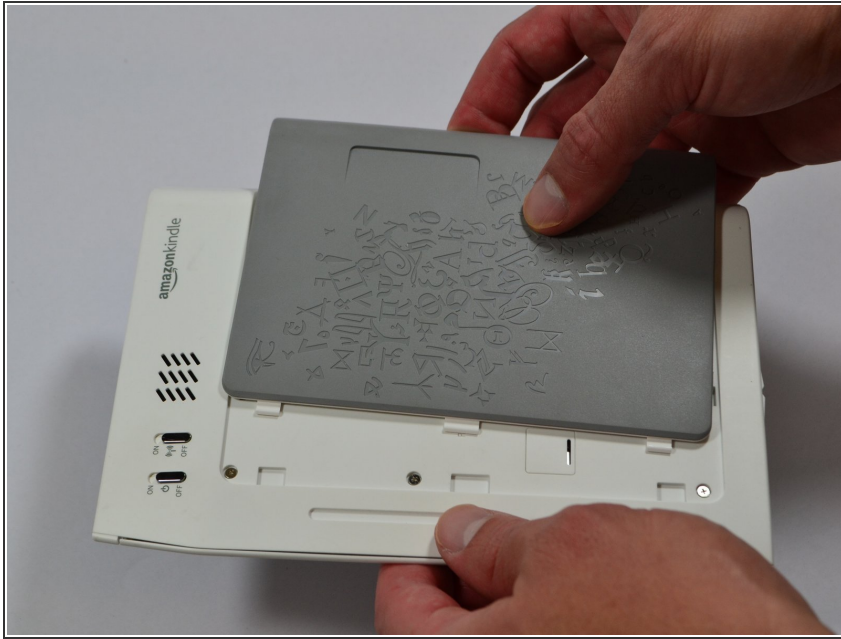
This guide covers the basic steps to replace the buttons of the keyboard on the First Generation Amazon Kindle.



TOOLS:

- [iFixit Opening Tools](#) (1)
 - [Phillips #00 Screwdriver](#) (1)
 - [Spudger](#) (1)
 - [Tweezers](#) (1)
-

Step 1 — Battery



- Slide the grey plastic cover laterally off the back of the device.

Step 2



- Use a plastic opening tool to lift the battery on the side closest to the edge of the device.
- Unplug the battery from the device by pinching the white connector and pulling.

⚠ Do not yank the battery or try to disconnect the battery by pulling the wires.

Step 3 — SD Card Reader



- Unscrew eight (8) Phillips #00 screws (3 mm).

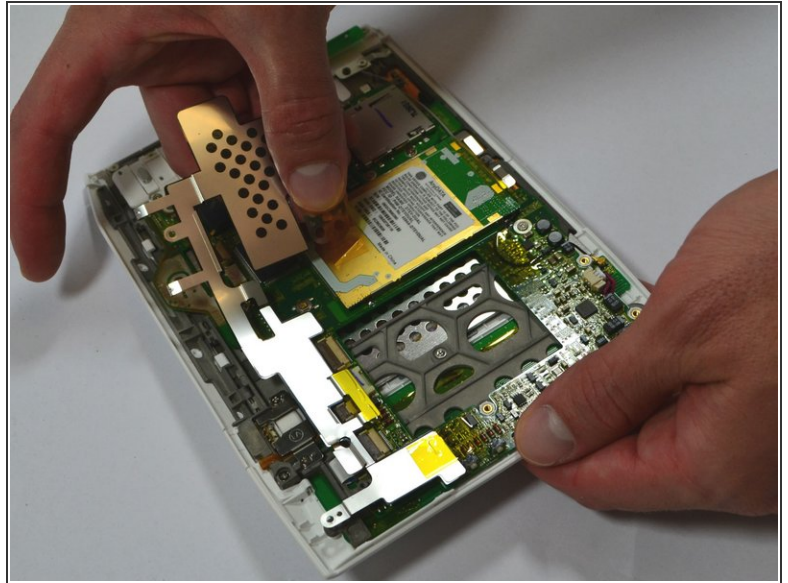
Step 4



- Start at one side of the device. Use a plastic opening tool to separate the casing of the device. Slowly work your way around the entire device.

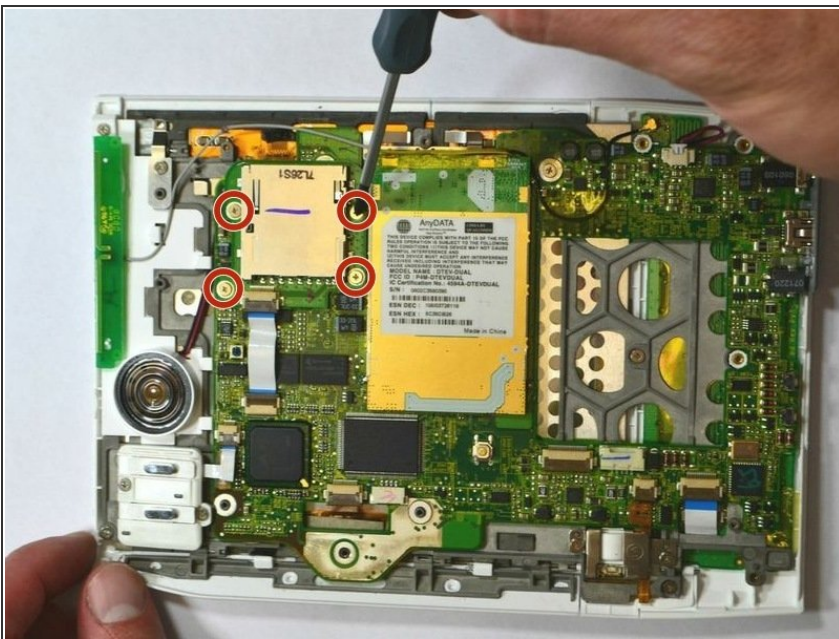
⚠ Avoid prying between the buttons and the device. This could cause damage to the buttons.

Step 5



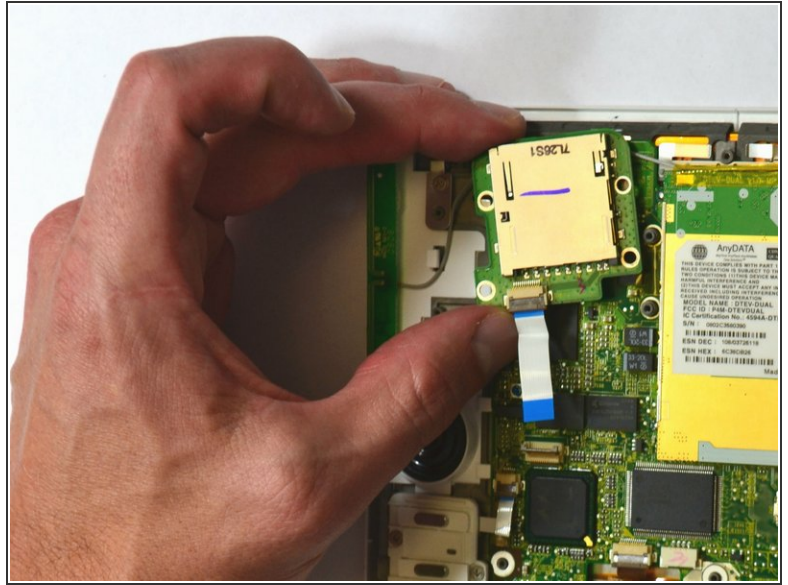
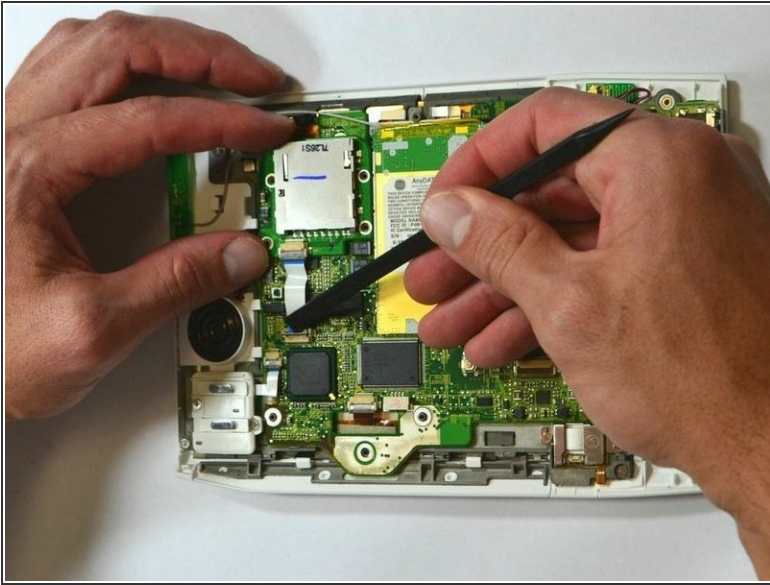
- Unscrew the two (2) Phillips #00 screws (3 mm) which fasten the metal casing shield.
- Slowly remove the metal casing shield by lifting it and carefully peeling up the tape.

Step 6



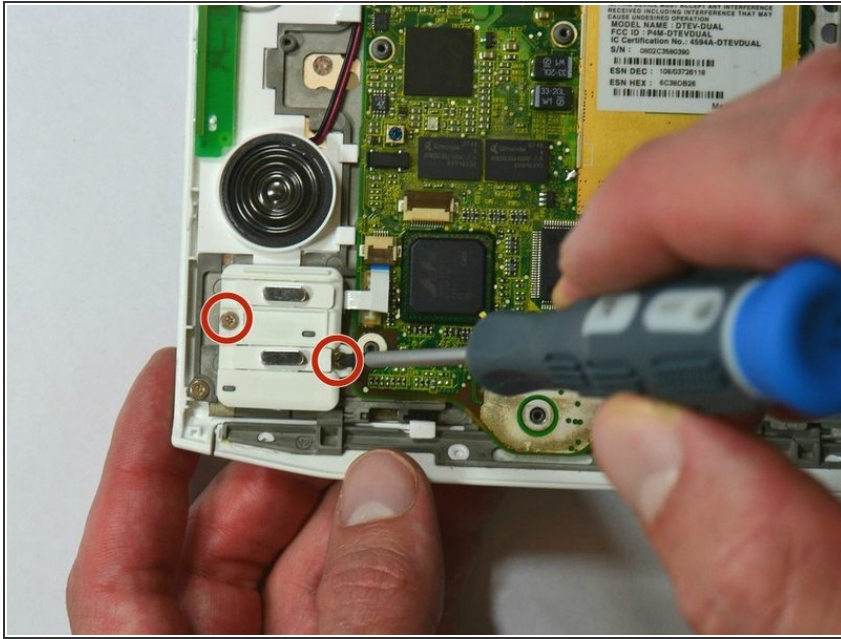
- Remove the four (4) Phillips #00 screws (3 mm) which fasten the SD Card Reader.

Step 7



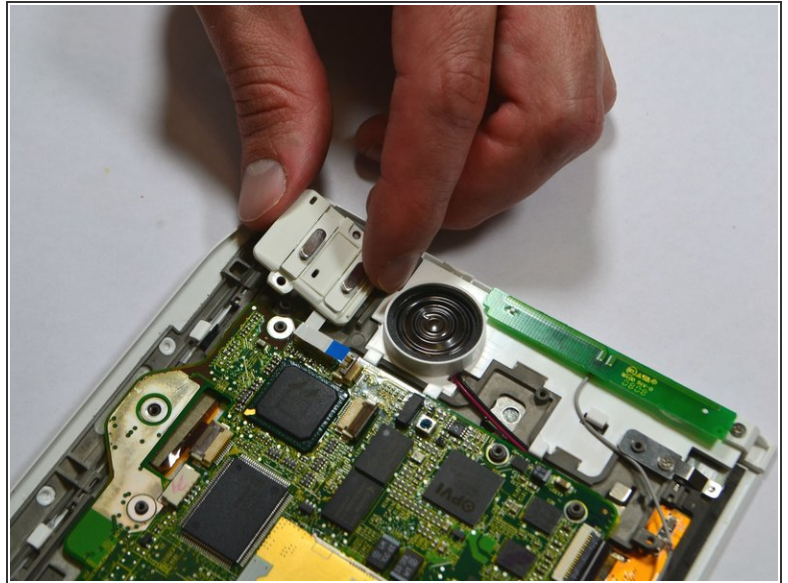
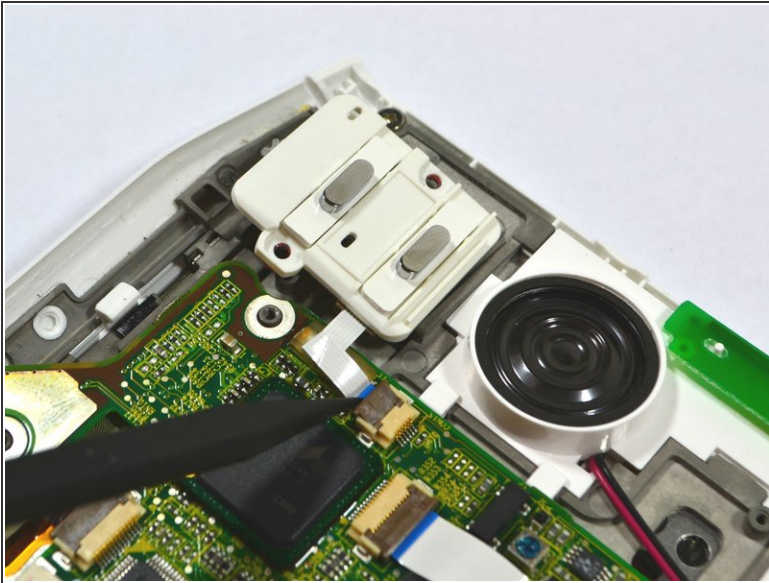
- Lift the flap attaching the blue and white ribbon cable to the motherboard by lifting it vertically with a spudger.
- ⓘ The flap is connected via a hinge. Once you lift the flap, it will stay up and the cable will be loose. Remember to snap it back down during reassembly.
- Carefully lift the SD Card Reader vertically from the motherboard.

Step 8 — Page Turner Keys



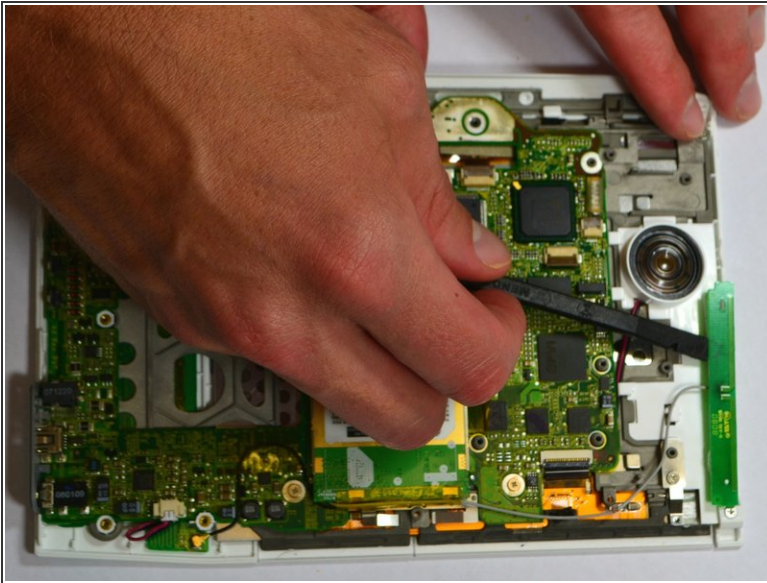
- Remove the two (2) Phillips #00 screws (3 mm) connecting the ON/OFF Power and Wifi Switches.

Step 9



- Lift the flap attaching the blue and white ribbon cable to the motherboard by lifting it vertically with the pointed-end of the spudger.
- ⓘ The flap is connected via a hinge. Once you lift the flap, it will stay up and the cable will be loose. Remember to snap it back down during reassembly.
- Carefully lift the ON/OFF Power and Wifi Switches vertically from the device motherboard.

Step 10



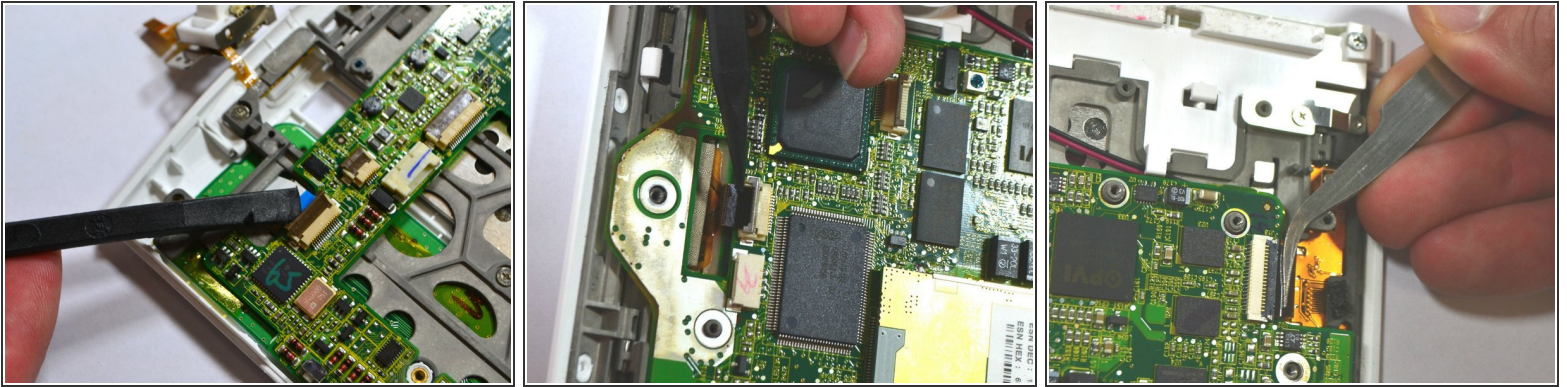
- Use a spudger to remove the Wifi antenna from the device by carefully prying it up off the casing.
- ⓘ The Wifi antenna is attached to the device by a mild adhesive. Once the antenna is free from the adhesive, set the antenna off to the side.
- ⚠ Do not try to detach the antenna from the motherboard.

Step 11



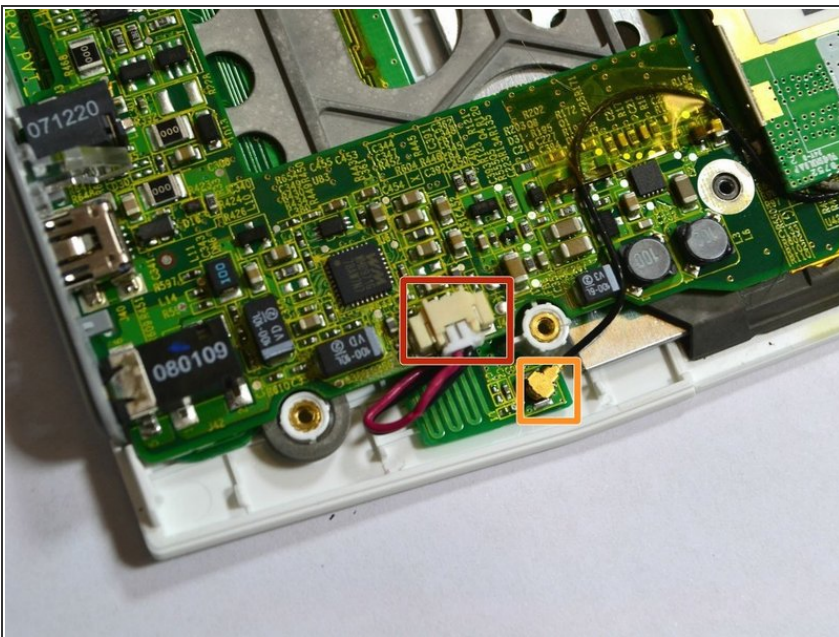
- Unscrew the two (2) Phillips #00 screws (3 mm) attaching the scroll bar.
- Use a spudger to lift the flap vertically in the second image to release the scroll bar from the motherboard.
- ⓘ The flap is connected via a hinge. Once you lift the flap, it will stay up and the cable will be loose. Remember to snap it back down during reassembly.
- ⚠ Do not pull the scroll bar off the device. Simply flip it around so it is out of the way for further disassembly, as seen in the third image.

Step 12



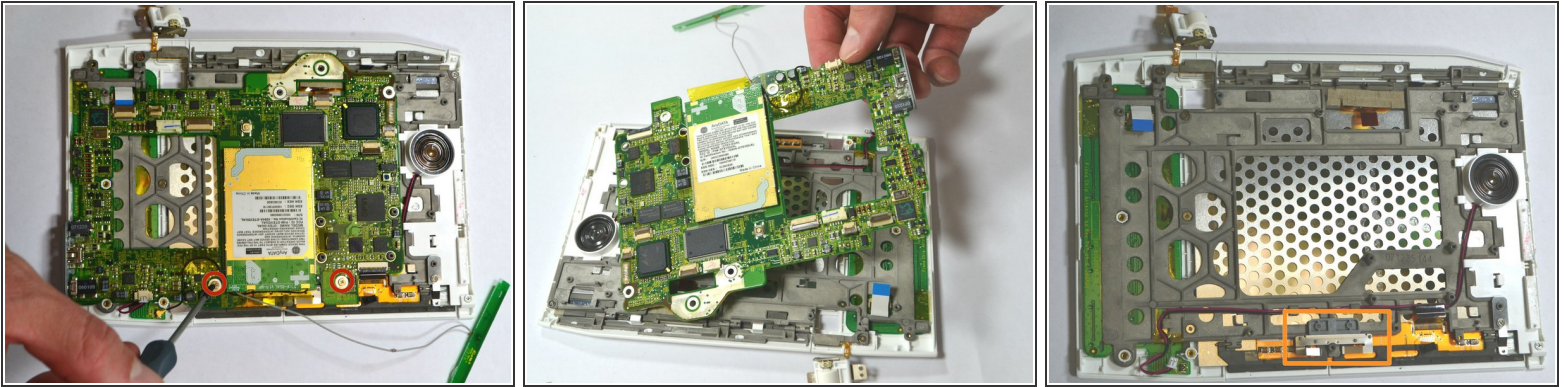
- Lift the flap attaching the blue and white ribbon cable to the motherboard by lifting it vertically with the spudger.
- Lift the flap with the pointed-end of the spudger to detach the ribbon cable indicated in the second image.
- ⓘ The flaps are connected via a hinge. Once you lift the flap, it will stay up and the cable will be loose. Remember to snap it back down during reassembly.
- Use tweezers to pull the ribbon cable in the third image laterally to detach it.

Step 13



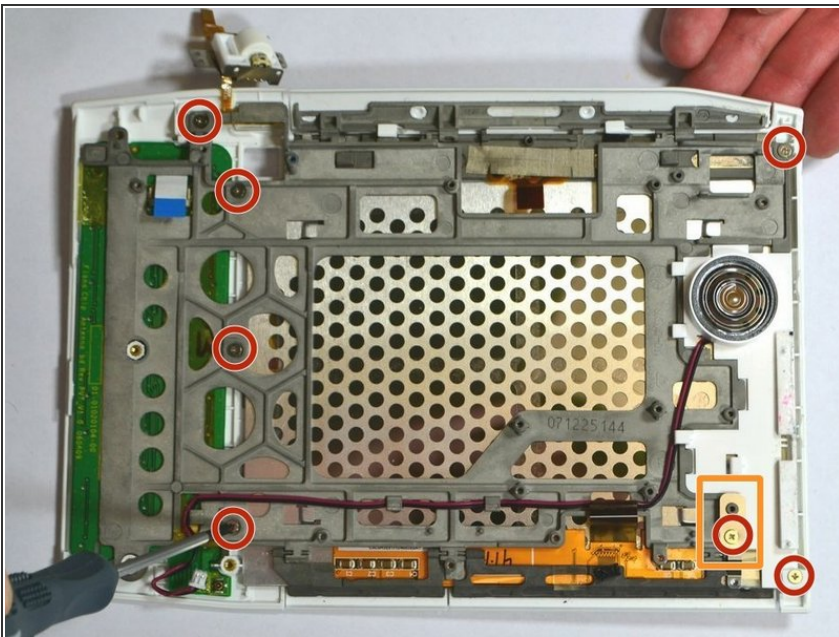
- Detach the cable by pulling laterally with tweezers or your fingertips. Do this by grasping the edges of the white connector and pulling laterally.
- Grasp the end of the cable with tweezers or your fingertips and pull upwards to detach it from the motherboard.
- ⚠ Do not grasp either cable by the wires and attempt to pull them.

Step 14



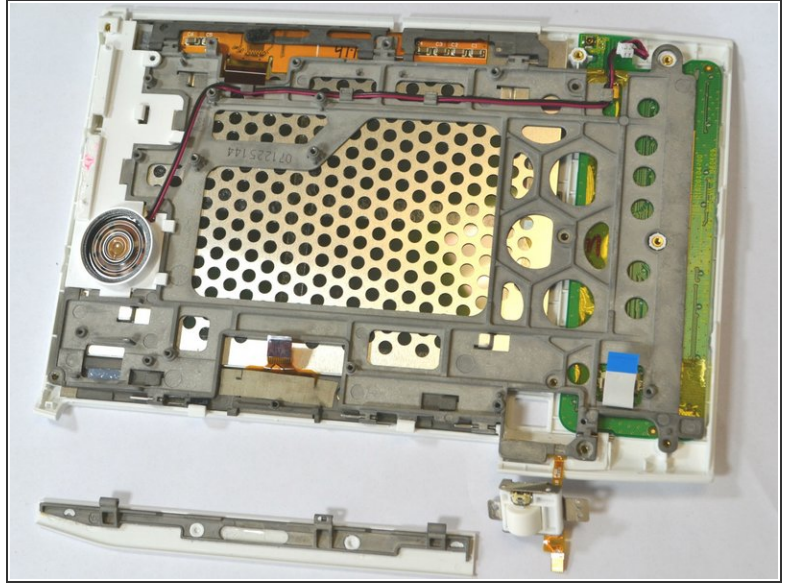
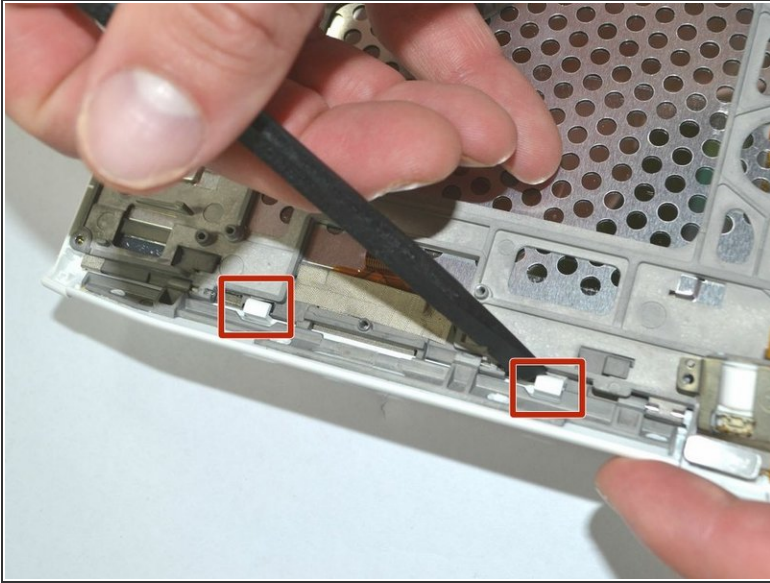
- Remove the two (2) Phillips #00 screws (3 mm) which attach the motherboard to the front casing.
- Carefully lift the motherboard off.
- The piece marked in the third image may be loose and fall out freely. If it does not fall off, use your fingers or a plastic opening tool to snap it off. Make sure to place it under the motherboard during reassembly, as found in the image.

Step 15



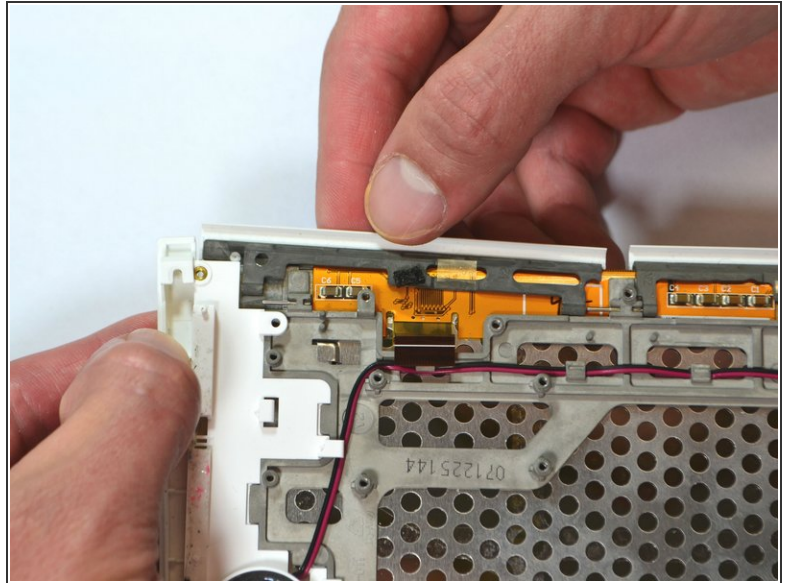
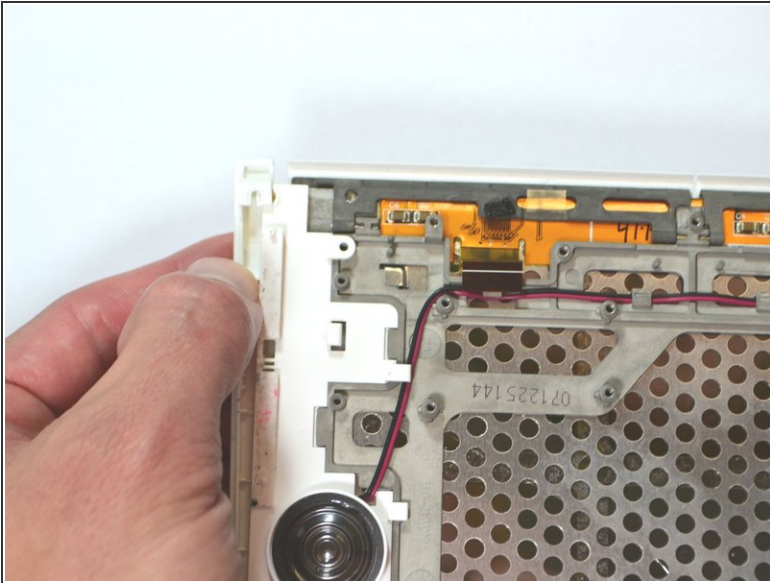
- Remove the seven (7) Phillips #00 screws (3 mm) remaining on the frame.
- ⚠ The orange-marked metal piece is only held down by a screw and will become loose. Make sure to re-position it during assembly.

Step 16



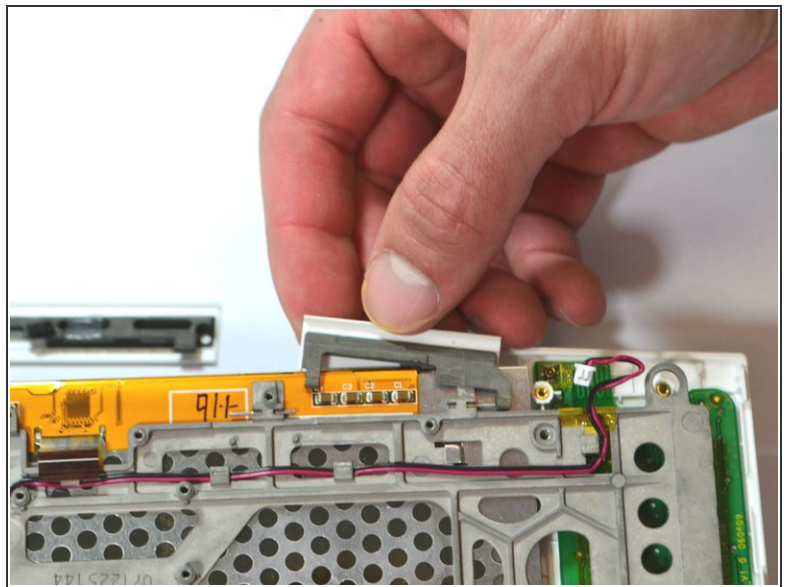
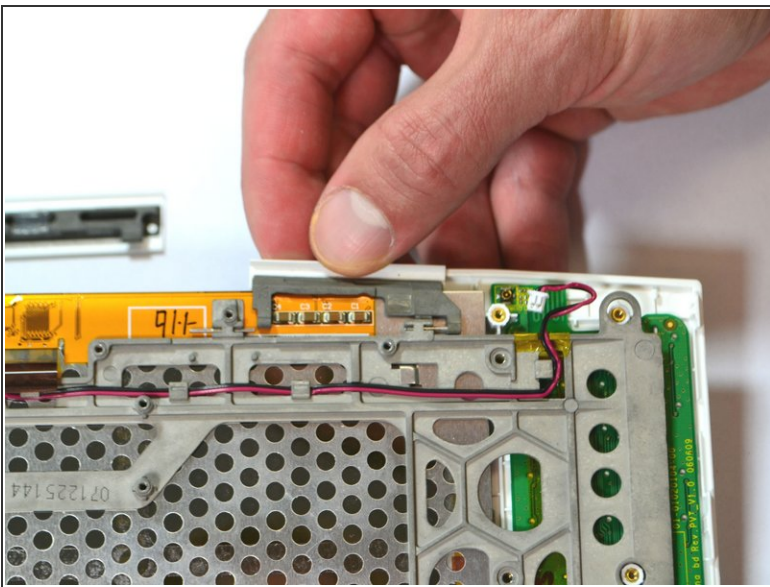
- Press down firmly on the two white tabs, behind the large 'NEXT PAGE' button with the spudger. This will unsnap the front casing from the rest of the device.
- ⓘ The front case will begin to come loose. Do not try to pull it off.
- Slide out the large 'NEXT PAGE' button laterally away from the keyboard.

Step 17



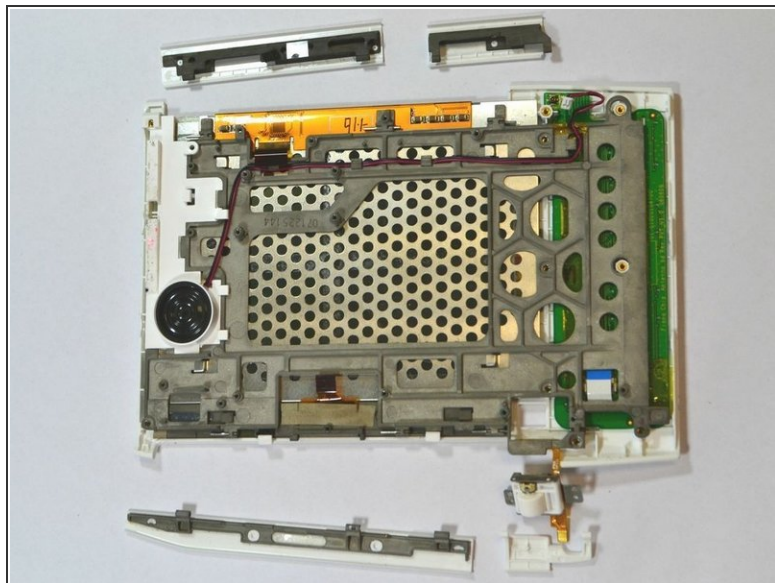
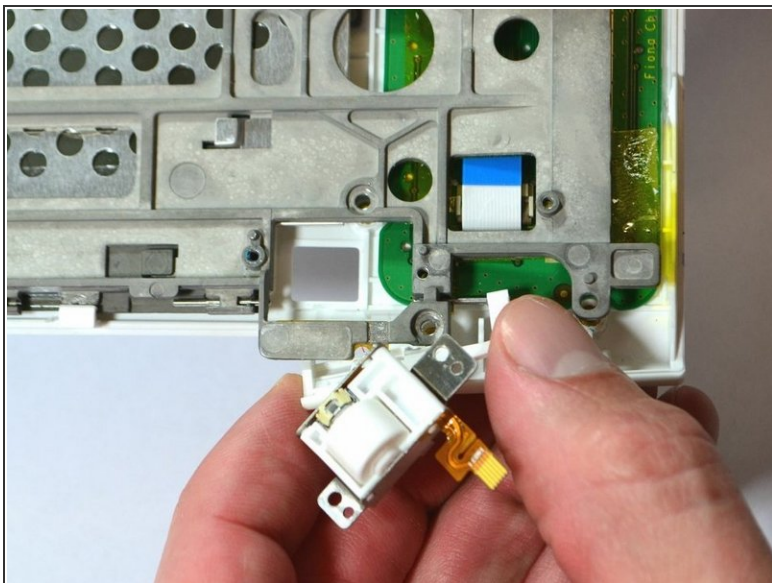
- Slightly lift the top corner of the panel.
- Slide the 'PREV PAGE' button out laterally towards the top corner.

Step 18



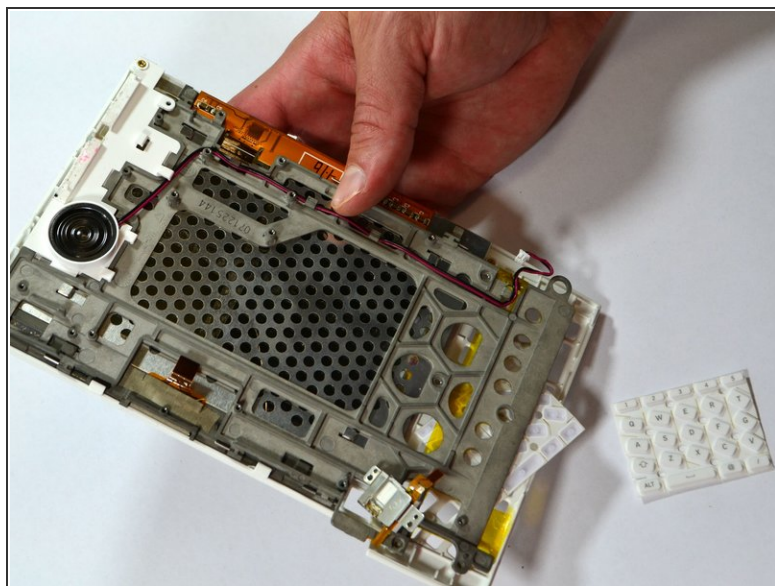
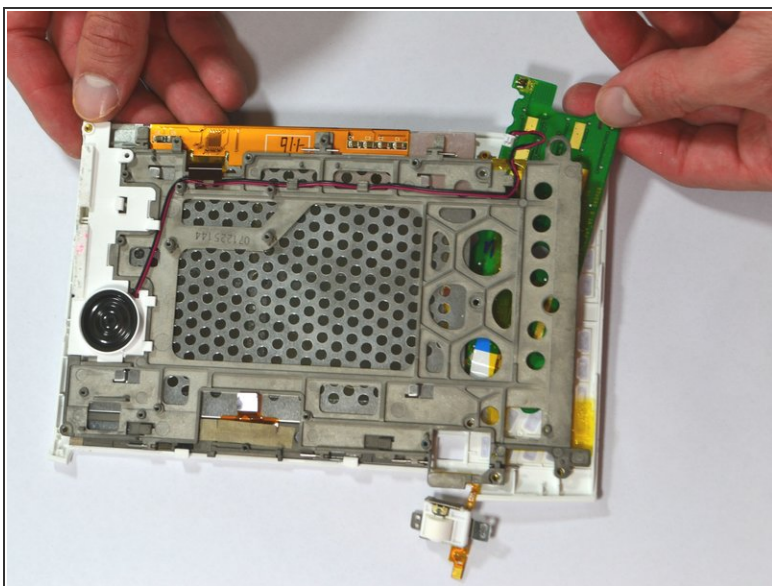
- Slide out the small 'NEXT PAGE' button laterally towards the keyboard.

Step 19



- Slide out the small 'BACK' button laterally towards the keyboard.

Step 20 — Keyboard/Buttons



- The keyboard and the blue and white ribbon cable will slide out horizontally from behind the frame.
- The rubber key pads will slide out from behind the frame.

To reassemble your device, follow these instructions in reverse order.