



Google Pixel 3 SIM Card Tray Replacement

Written By: Alex Diaz-Kokaisl



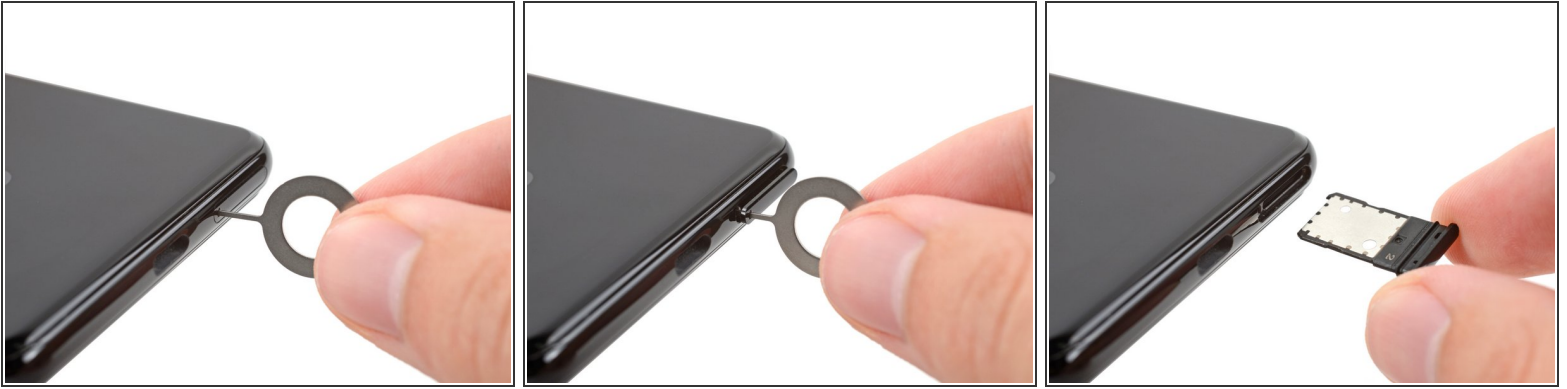
INTRODUCTION

Use this guide to replace the SIM card tray in your Google Pixel 3.

TOOLS:

- [SIM Card Eject Tool](#) (1)
-

Step 1 — Remove the SIM card tray



- Insert a SIM eject tool, bit, or straightened paper clip into the SIM card tray hole.
- Press the SIM eject tool into the SIM card tray hole to eject the SIM card tray.
- Remove the SIM card tray.

To reassemble your device, follow these instructions in reverse order.