



How to Calibrate an Optical Fingerprint Sensor

Follow this guide to calibrate the in-screen...

Written By: Alex Diaz-Kokaisl



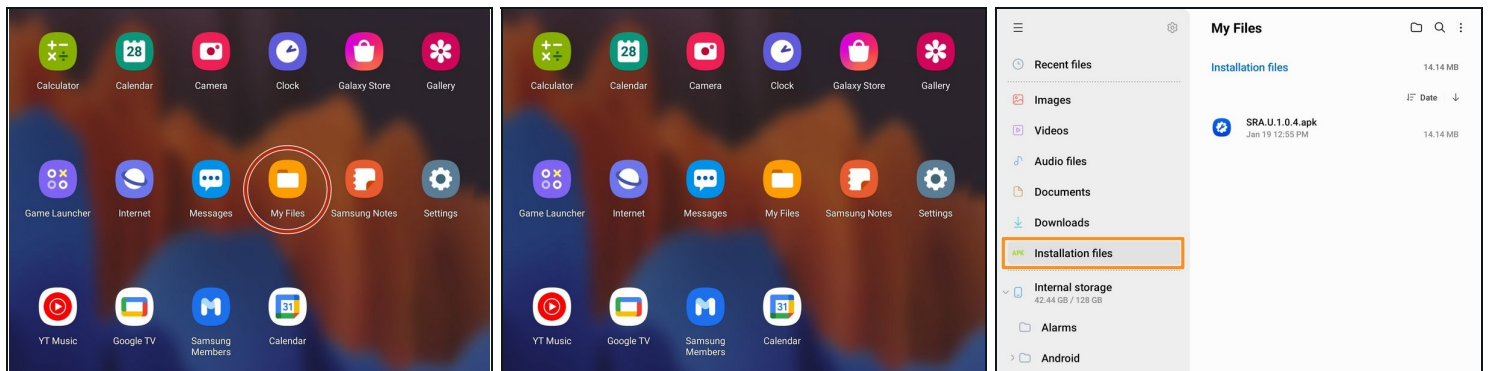
INTRODUCTION

Follow this guide to calibrate the in-screen optical fingerprint sensor in your Samsung phone or tablet. You should perform the calibration whenever you replace the screen, to ensure that the fingerprint sensor is accurate and secure.

This calibration procedure currently only works for the Tab S7+'s optical fingerprint sensor. This guide will update as Samsung adds more compatibility. For more information, check out the [Samsung Self-Repair document](#).

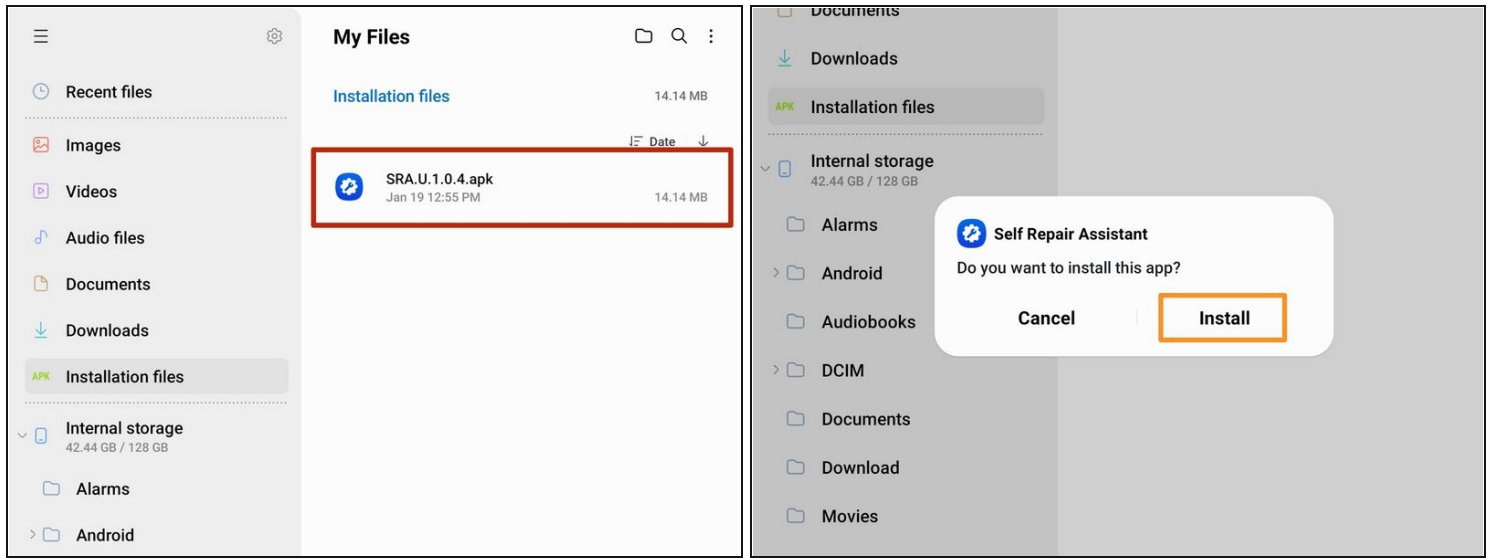
You'll need the Samsung fingerprint sensor calibration toolkit in order to complete this procedure.

Step 1 — Download the app



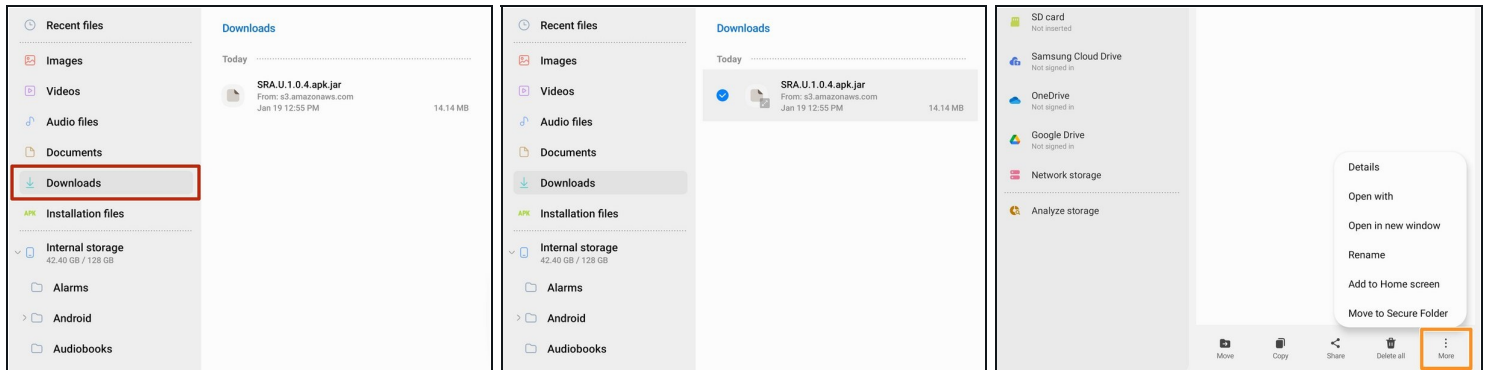
- Download the Self Repair Assistant app [here](#).
 - ⓘ You may be prompted with a "[File might be harmful](#)" warning. If so, select "Download anyway."
- Open the **"My Files"** app.
- Navigate to the **"Installation files"** tab on the left side of the screen.

Step 2 — Install the app



- Select the app on the right side of the screen.
 - ① If the app doesn't show up on this panel, skip to the next step.
- Select "**Install**" to confirm the app's installation.
- Skip the next two steps.

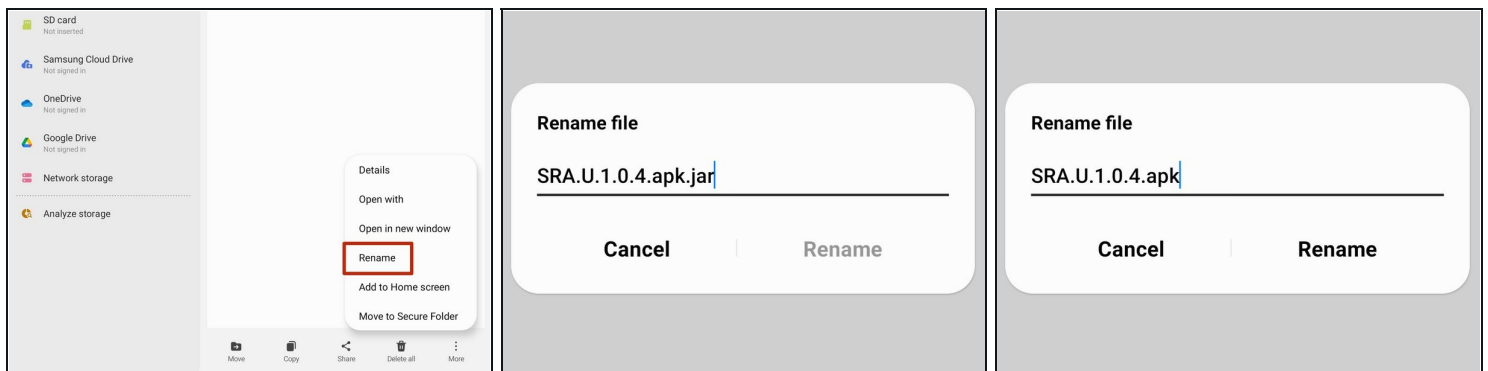
Step 3 — Rename the app



i If your app didn't show up on the "**Installation files**" tab, follow the next two steps to rename the file.

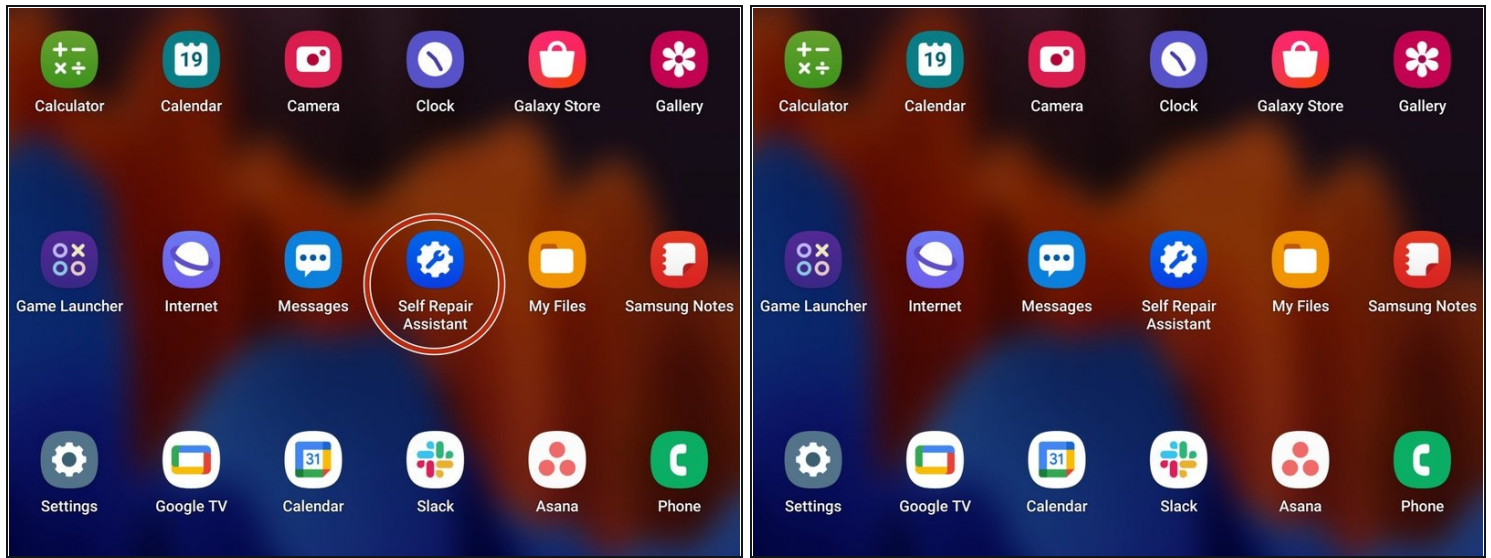
- Navigate to the "**Downloads**" tab on the left side of the screen.
- Long press the download file until an orange checkmark appears to the left of it.
- Navigate to the bottom of the screen and select the "**More**" option.

Step 4



- Select the "**Rename**" option.
 - Delete the **.jar** at the end of the app's name.
- i** Your file should now appear in the "**Installation files**" tab.

Step 5 — Open the Self Repair Assistant app



- Open the Self Repair Assistant app.

Step 6 — Agree to the terms and conditions

*keep the device state information up to date after customer's self-service;
*protect against, identify and prevent fraud and other criminal activity, claims and other liabilities; and
*comply with and enforce applicable legal requirements, relevant industry standards and our policies, including this Privacy Notice and the Samsung Privacy Policy.

Information Sharing
As stated above, this Privacy Notice supplements the Samsung Privacy Policy (available at <https://www.samsung.com/us/account/privacy-policy>), which describes our information sharing practices.

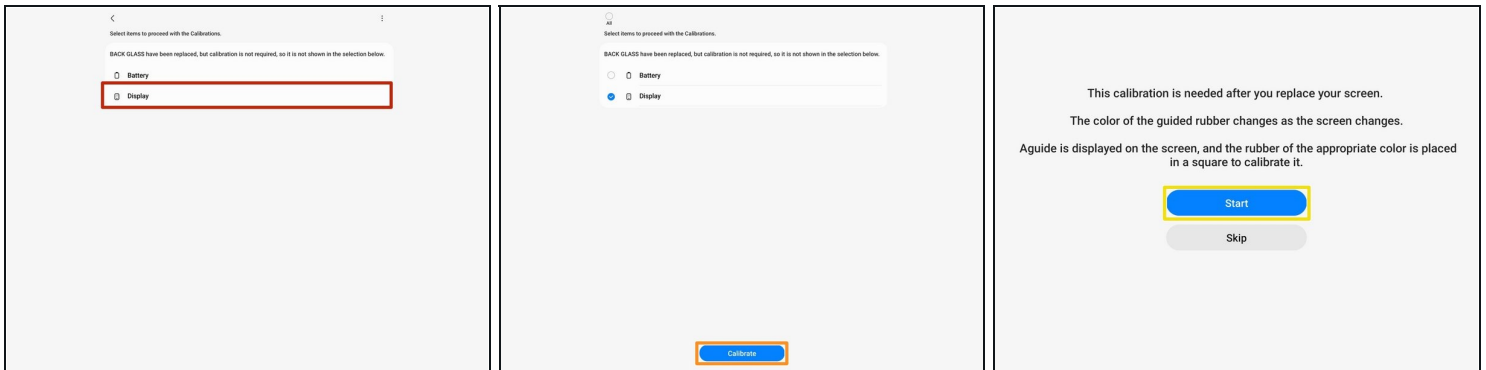
Notice To California Residents
If you are a California consumer, for more information about your privacy rights, please see the section of the Samsung Privacy Policy called "California Consumer Privacy Statement" available at <https://www.samsung.com/us/account/privacy-policy>.

Updates to This Privacy Notice
We will update this Privacy Notice to let you know if we change how we collect and process your information in Self Repair Assistant, if we're required by law. The date when the document was last updated is shown at the top of this Privacy Notice.

Disagree Agree

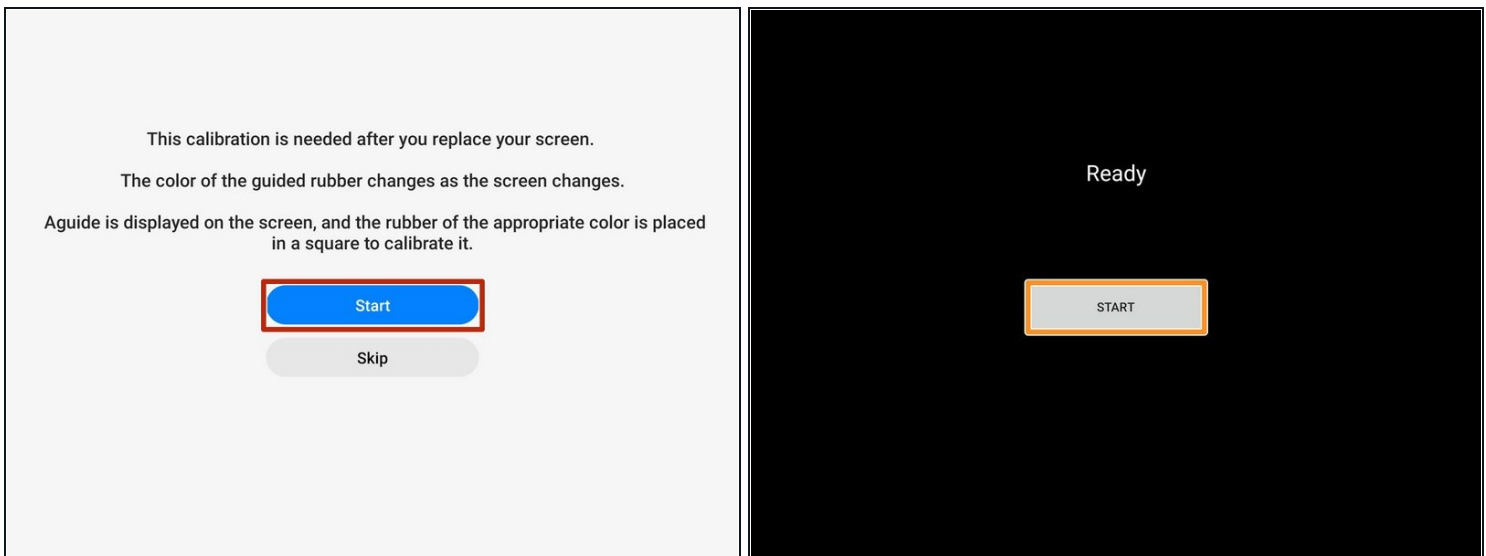
- Select "**Agree**" to accept the Terms and Conditions.

Step 7 — Select the procedure



- Select the "**Display**" icon.
- Select "**Continue**" at the bottom of the screen.
 - ⓘ If you want to perform a battery cycle reset instead, follow this [guide](#).
- Select "**Start**" to begin the fingerprint sensor calibration.

Step 8 — Begin the fingerprint sensor calibration



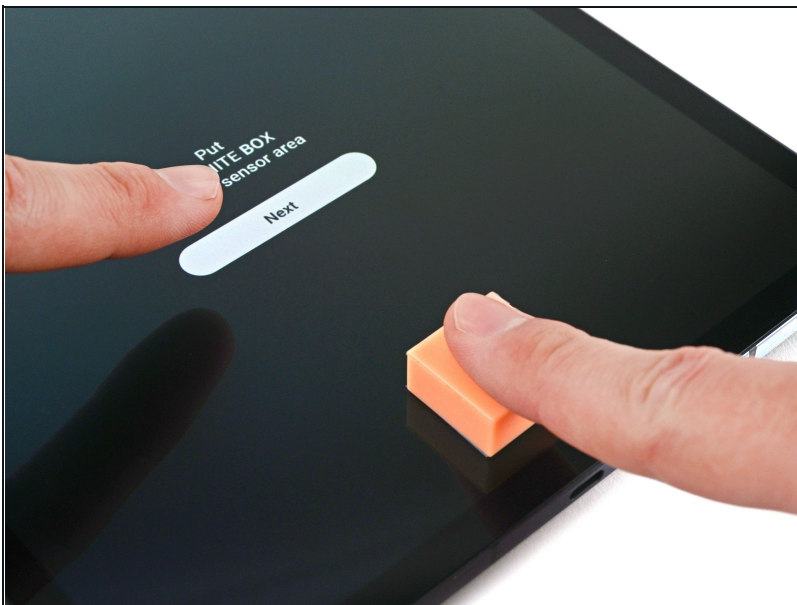
- Select "**Start**" to begin the fingerprint sensor calibration.
- Once the screen turns black, select "**Start**" again.

Step 9 — Apply the white box



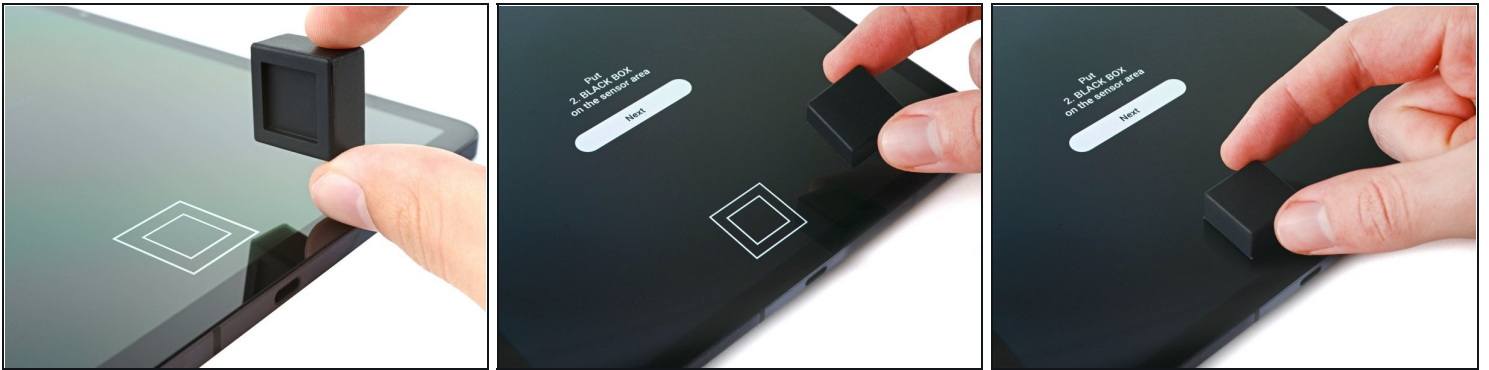
- Place the white box over the outline near the bottom of the screen.
- Cover the outline with the side on the box that matches the pattern.
- ① Make sure the white box completely covers the outline. Deviations could result in a "Fail" result or an inaccurate calibration.

Step 10



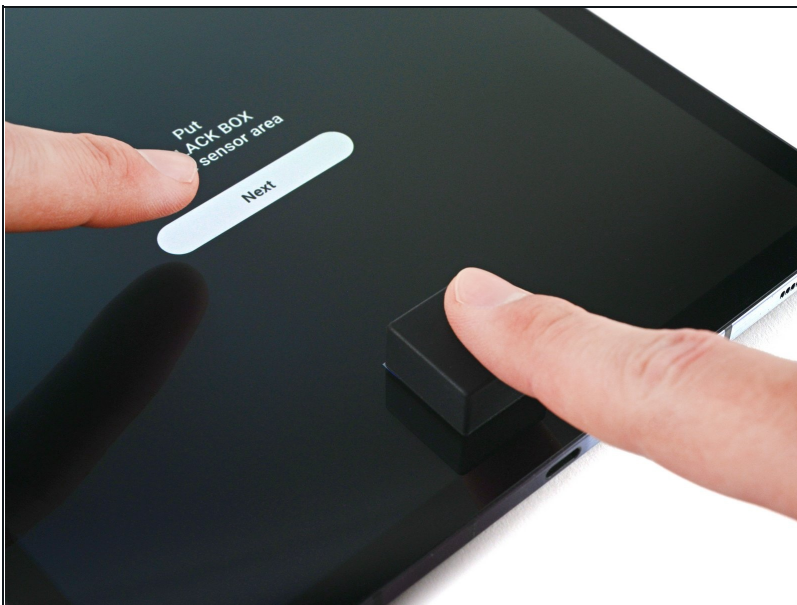
- Use your finger to press down on the white box.
- While pressing down, use your other hand to select the "**Next**" icon near the top of the screen.
- Continue pressing until the "Calibrating" disappears.

Step 11 — Apply the black box



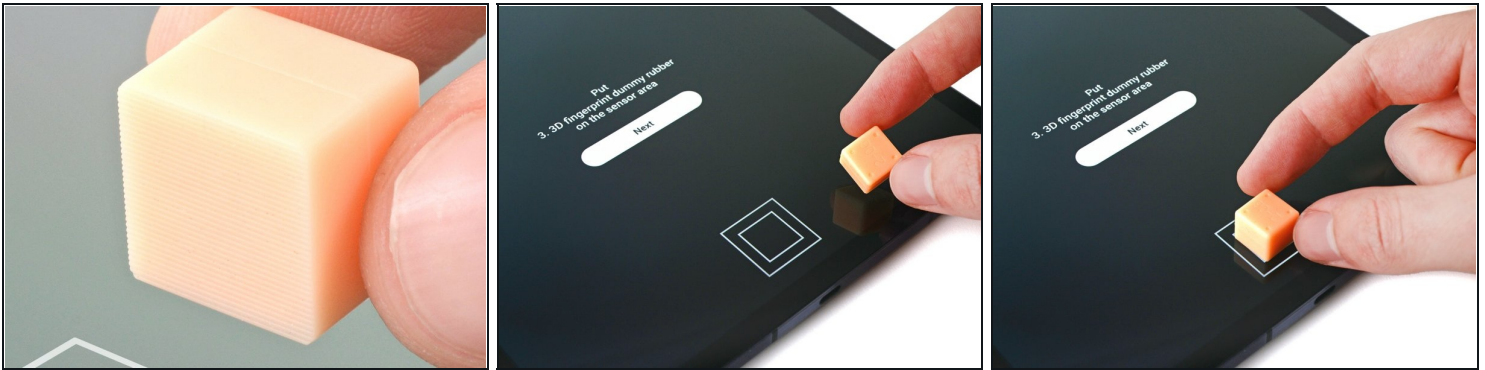
- Place the black box over the outline near the bottom of the screen.
- Cover the outline with the side on the box that matches the pattern.
- ⓘ Make sure the black box completely covers the outline. Deviations could result in a "Fail" result or an inaccurate calibration.

Step 12



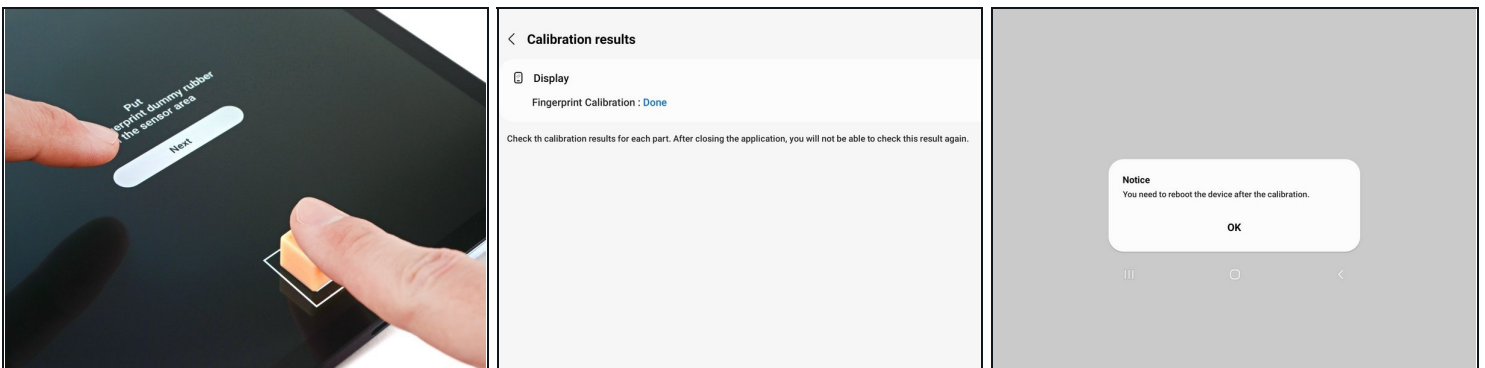
- Use your finger to press down on the black box.
- While pressing down, use your other hand to select the "**Next**" icon near the top of the screen.
- Continue pressing until the "Calibrating" disappears.

Step 13 — Apply the small white box



- Place the side of the small white box with the grooves over the inner portion of the outline near the bottom of the screen.
 - ① Make sure the grooves on the box are vertical when placing it on the screen.
 - ① Make sure the white box completely covers the inner outline. Deviations could result in a "Fail" result or an inaccurate calibration.

Step 14



- Use your finger to press down on the small white box.
- While pressing down, use your other hand to select the "**Next**" icon near the top of the screen.
- Continue pressing until "**Done**" appears at the top of the screen.
 - You may need to reset your device for the calibration to apply.

Your optical fingerprint sensor is calibrated and ready for use.

If the calibration fails for any reason, repeat the calibration procedure.