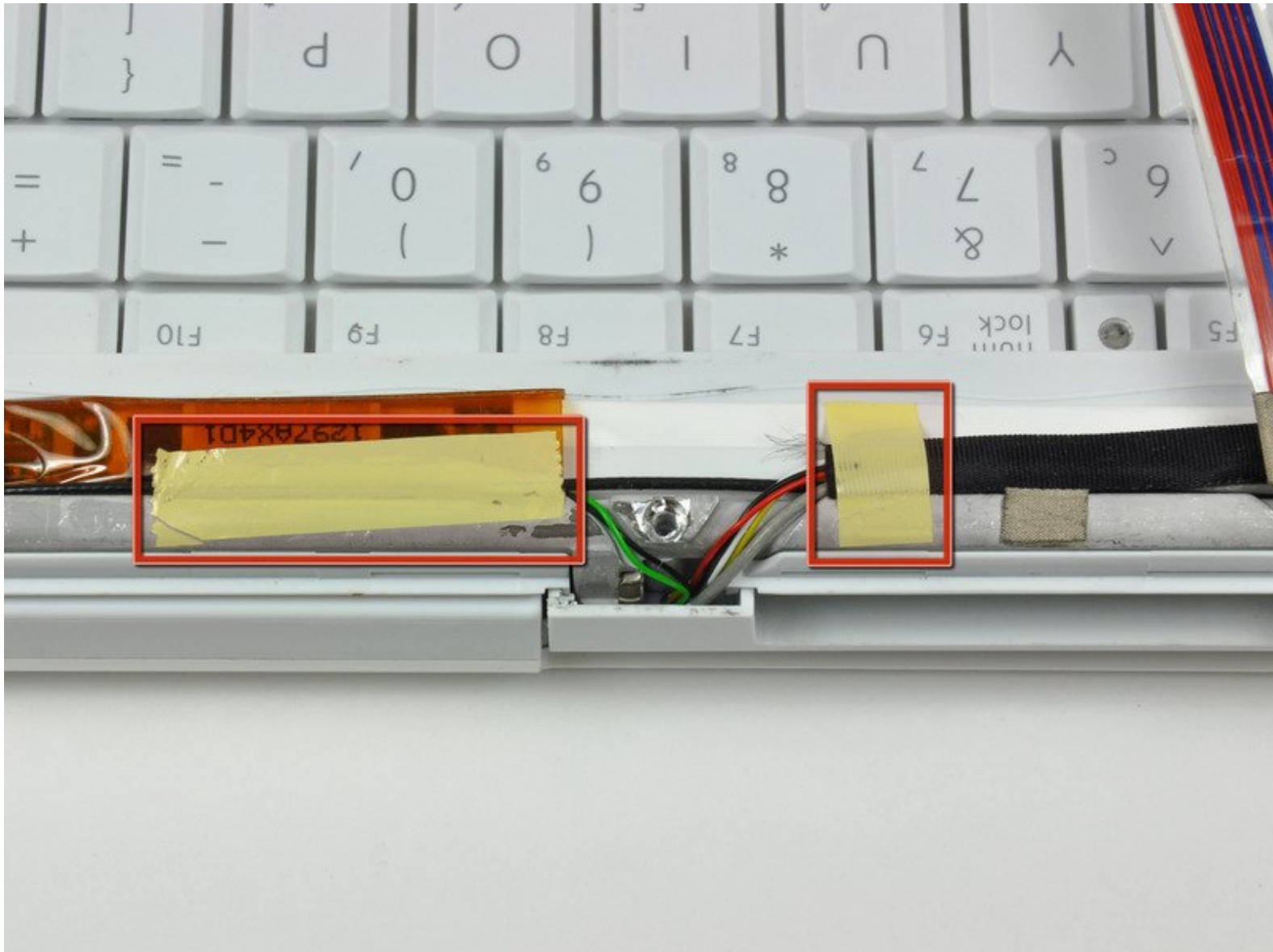




# iBook G3 12" Display Inverter Replacement

Written By: Ben Eisenman



# INTRODUCTION

Replace a faulty display inverter with the display attached to your iBook.



## TOOLS:

- [1.5mm Hex Screwdriver](#) (1)
- [Coin](#) (1)
- [Phillips #00 Screwdriver](#) (1)
- [Spudger](#) (1)



## PARTS:

- [iBook G3 or G4 Display Inverter](#) (1)

## Step 1 — Battery



- Use a coin to rotate the battery locking screw 90 degrees clockwise.
- Lift the battery out of the computer.

## Step 2 — Rear Display Bezel



- Use a 1.5mm hex screwdriver to remove the two hex screws on either side of the display (four screws total).
- ⓘ If you don't have a 1.5mm hex driver, you can probably get these screws out with a T6 Torx screwdriver. However, if you use a T6 Torx driver you'll be more likely to strip the screws.

### Step 3



- Insert the flat end of a spudger perpendicular to the face of the display into the gap between the front and rear bezels near the upper left corner of the display.
- Rotate the spudger away from the display to pry the rear bezel off the front bezel.

### Step 4



- Run your spudger along the top edge of the front display bezel to evenly separate the two bezels.

## Step 5



- Working down from the upper left corner, use the flat end of a spudger to pry the rear bezel away from the left edge of the display.

## Step 6



- Use the flat end of a spudger to pry the rear bezel away from the right edge of the display.
- If necessary, pry along the bottom edge of the rear bezel to separate it from the display assembly.

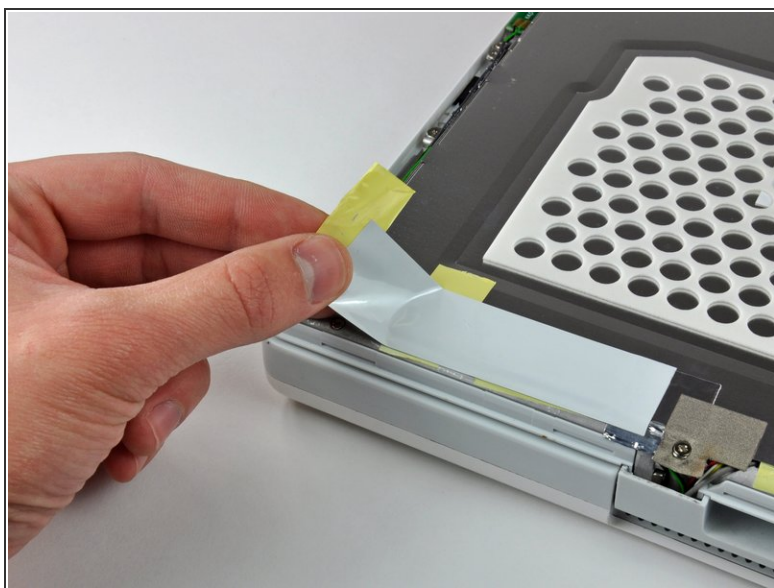
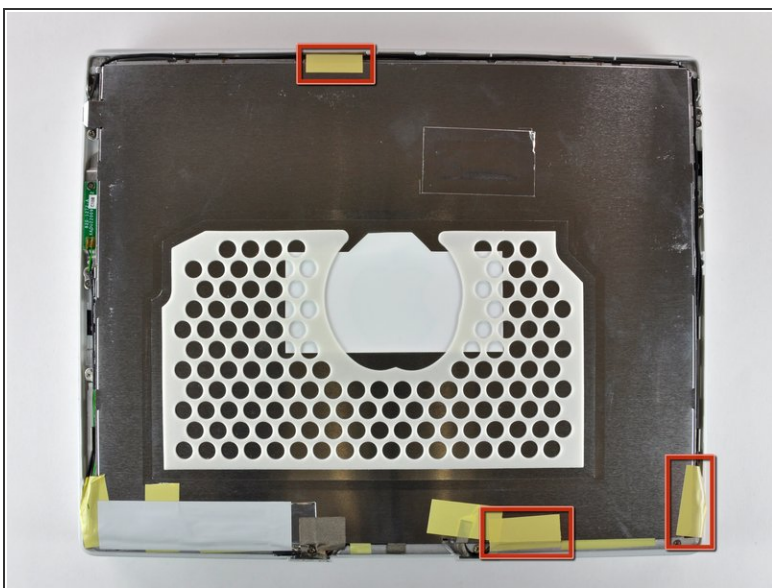


## Step 7



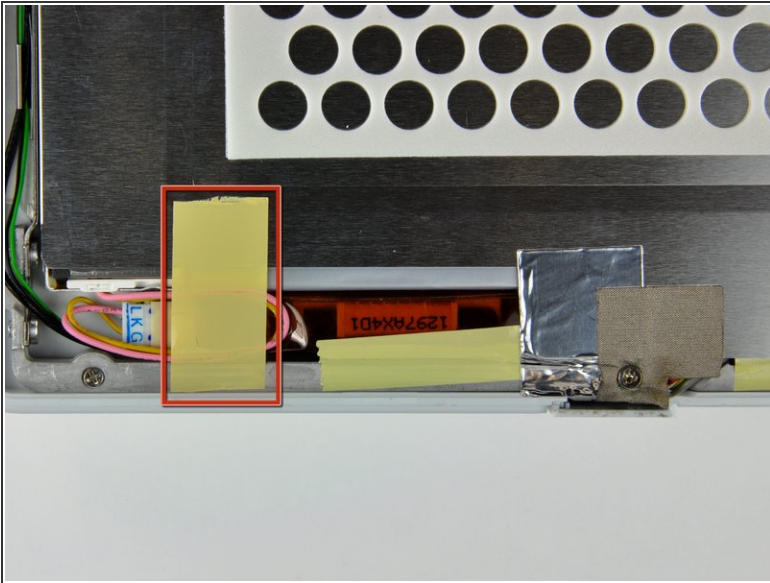
- Lift the rear bezel off the display assembly.

## Step 8 — LCD



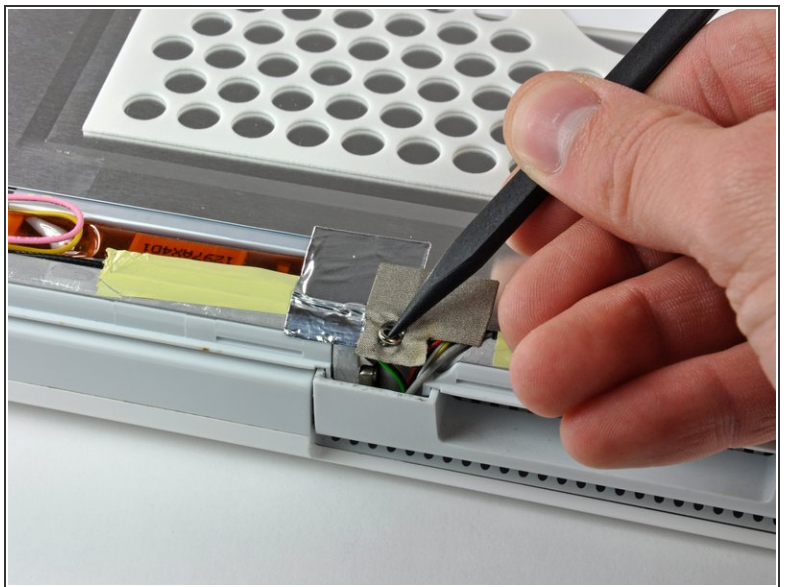
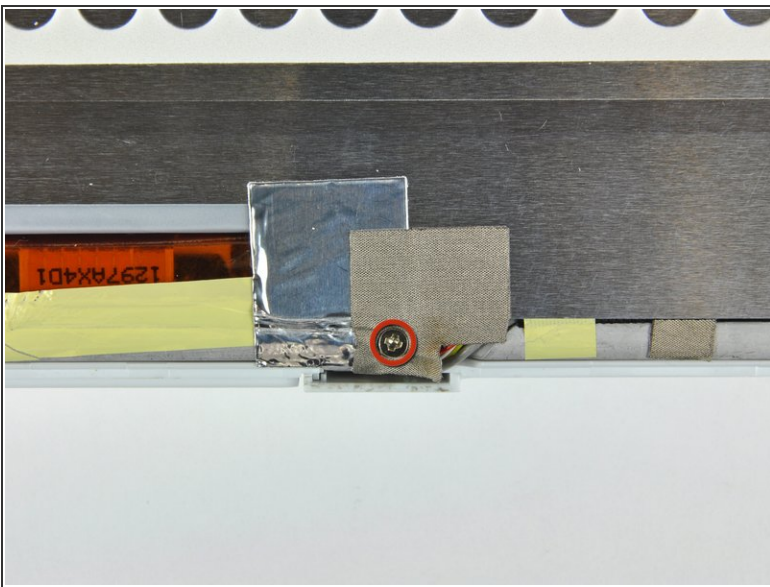
- Close the display.
- Remove the small pieces of yellow tape securing the thin metal LCD cover to the display.
- Remove the large piece of tape near the right display hinge.

## Step 9



- Remove the tape covering the inverter cable connector.
- Remove the piece of foil tape near the center of the thin metal LCD cover.

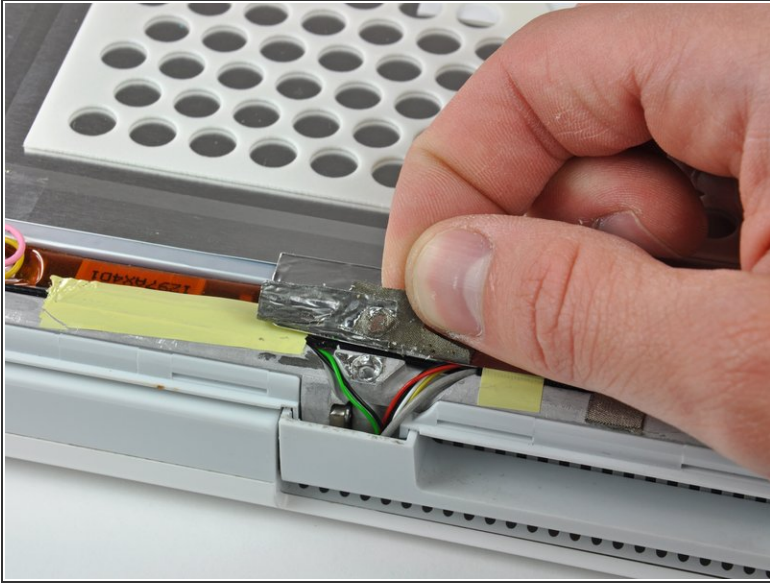
## Step 10



- Remove the Phillips screw near the right display hinge.
- Use the tip of a spudger to remove the small spacer under the screw you just removed.



## Step 11



- Pull the foil/braided pieces of tape off the aluminum frame of the clutch hinges. Leave the tape attached to the thin steel LCD cover.
- Remove the small piece of tape holding the display data cable ground strap to the LCD cover.

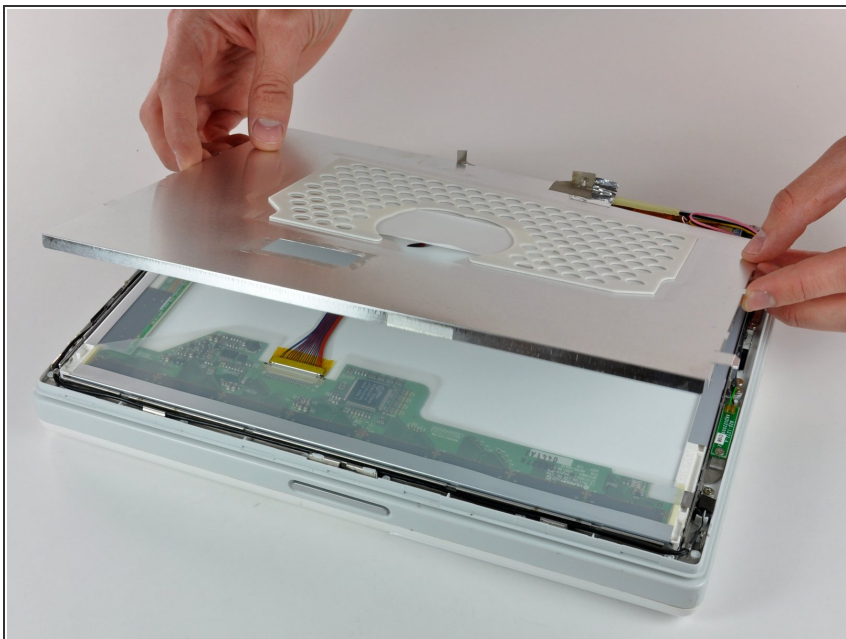
## Step 12



- Remove the two Phillips screws securing the left and right sides of the LCD to the frame of the clutch hinges (four screws total).

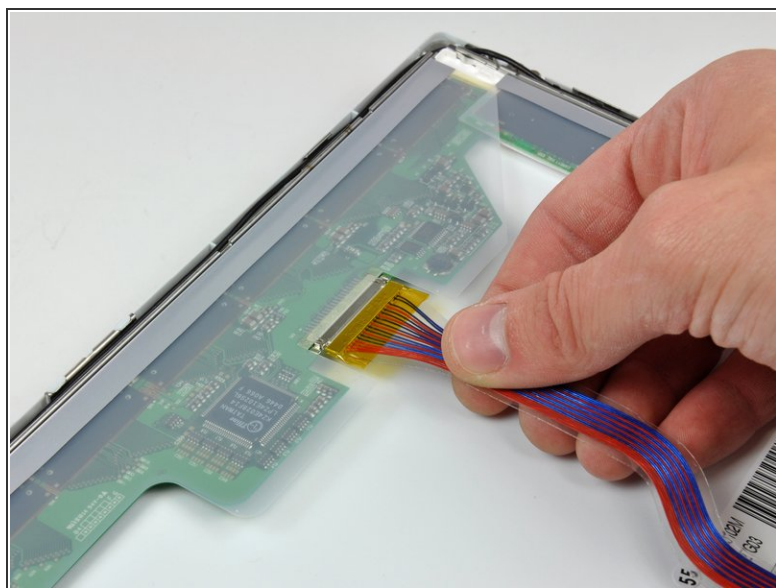
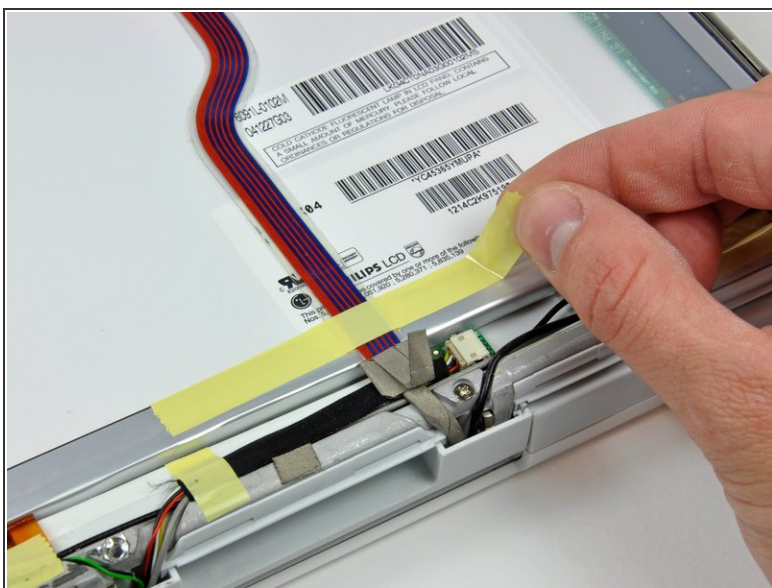


## Step 13



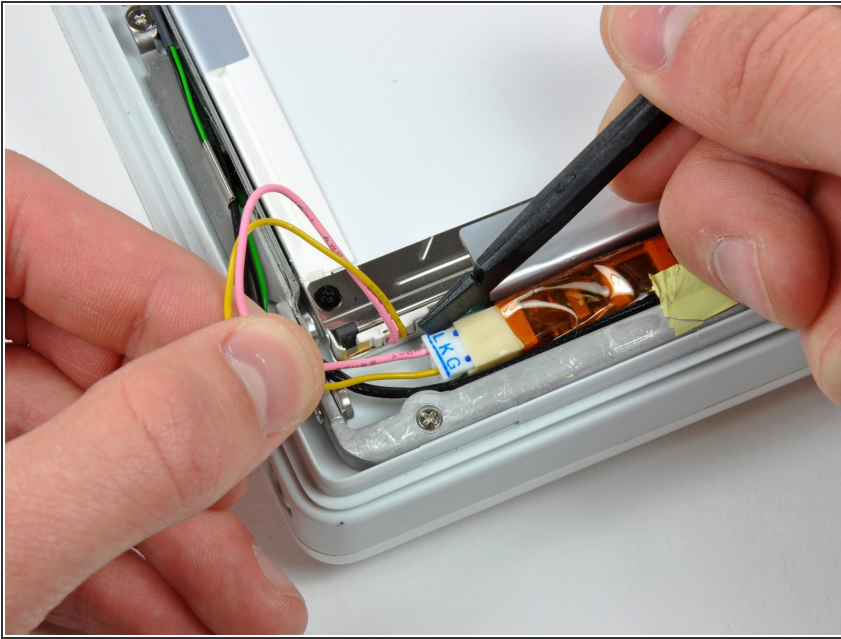
- Carefully remove the thin steel LCD cover.

## Step 14



- Remove the long piece of tape securing the display data cable to the LCD.
- Disconnect the display data cable by pulling the cable away from the socket on the LCD.

## Step 15



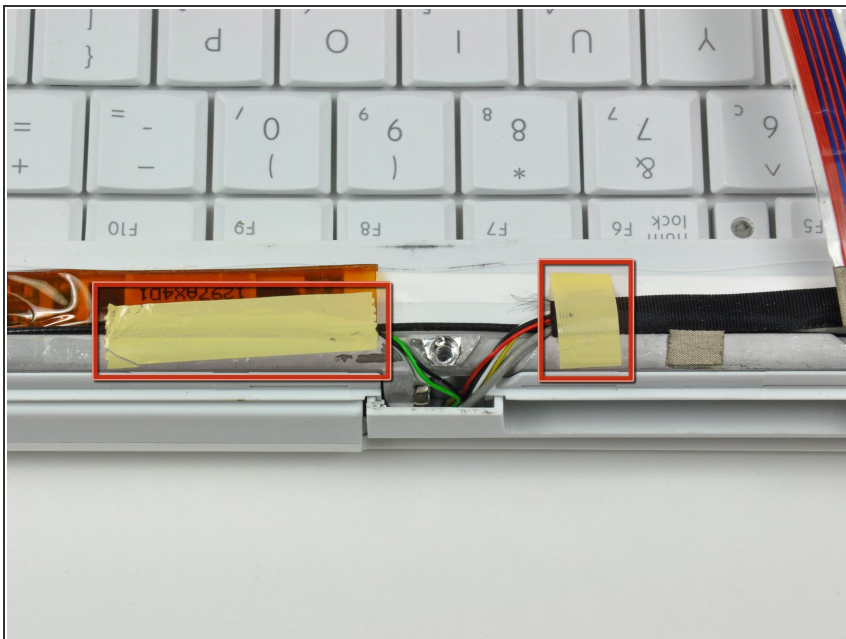
- Disconnect the backlight cable from the inverter.
- ⓘ It is helpful to use a spudger to push the backlight connector away from its socket while you lightly pull its cables away from the inverter.

## Step 16



- Open the display.
- Lift the LCD out of the display assembly.

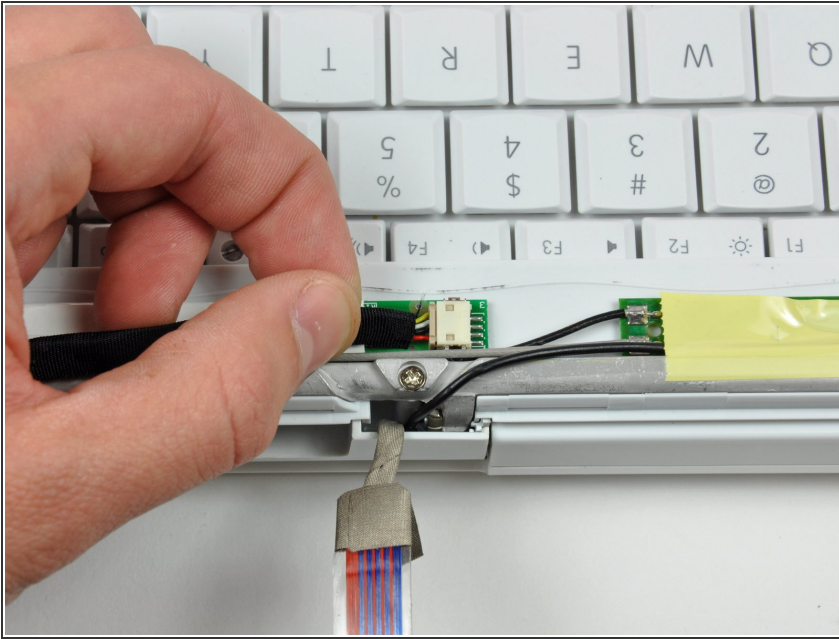
## Step 17 — Display Inverter



- Remove the pieces of tape holding the inverter and the inverter cables to the clutch hinges.



## Step 18



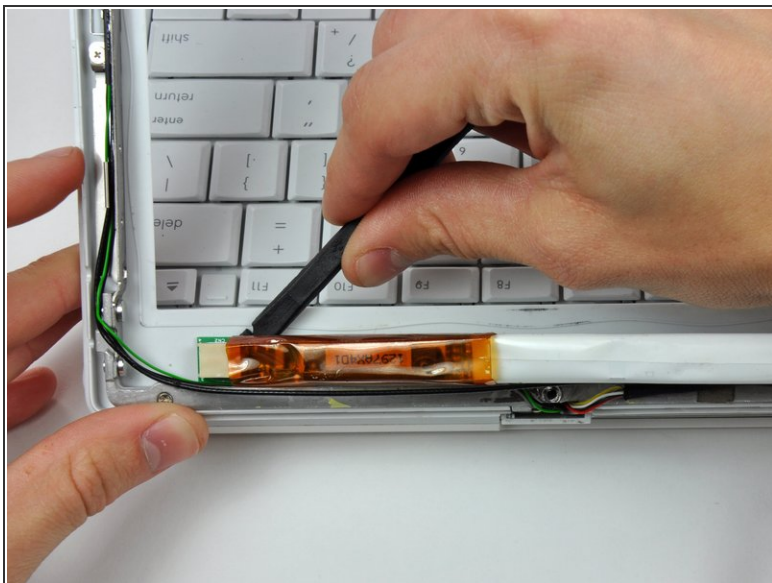
- Disconnect the inverter cable by pulling its connector away from the socket on the inverter board.

**⚠ The inverter board is a very thin and delicate circuit board that is easily broken. Use caution.**

**ⓘ This connector tends to stick in its socket. It is helpful to push the connector with the tip of a spudger through the two small holes in the top of the socket while pulling the connector away from the socket.**

**⚠ Make sure to grasp the inverter cabling by the black tape and not the individual wires. Pulling the wires themselves will surely damage the inverter cable.**

## Step 19



- Insert the flat end of a spudger under the middle of the inverter board.
- Slide the spudger to the far left and right edges to separate the inverter board from the adhesive securing it to the front bezel.
- Remove the inverter board.

To reassemble your device, follow these instructions in reverse order.