



# Skullcandy Crusher Wireless Bluetooth Antenna Replacement

How to replace the bluetooth antenna on a Skullcandy Crusher Wireless.

Written By: Valerii



## INTRODUCTION

Use this guide to replace the Bluetooth antenna in a Skullcandy Crusher Wireless headphones. A replacement Bluetooth antenna can be bought online.

Follow this replacement guide if you've identified the Bluetooth antenna as a source of a problem (or maybe you just want to see the internal components of your Skullcandy Crusher Wireless). For more information, refer to the [Troubleshooting page](#).

Also, for more information about soldering and desoldering, please [use this guide](#).



### TOOLS:

- [Phillips Head Screwdriver: Size PH1](#) (1)
- [iFixit Opening Tool](#) (1)
- [Soldering Station Hakko FX-888D](#) (1)



### PARTS:

- [Skullcandy Crusher Wireless Replacement Ear Cushion](#) (1)  
<https://www.skullcandy.com/crusher-wireless-replacement-ear-cushion>

## Step 1 — Ear Cushion



- Take your headphones and hold them upside down for better control with your hands.

## Step 2



- Grab the ear cushion firmly between your thumb and forefinger with a tight grip.
- Pull the ear cushion away from the plastic, covering the speaker, by sliding the ear cushion down to release it.



### Step 3



- Continue pulling it away from the edges of the plastic covering until the cushion is fully removed.

### Step 4 — Bluetooth Antenna



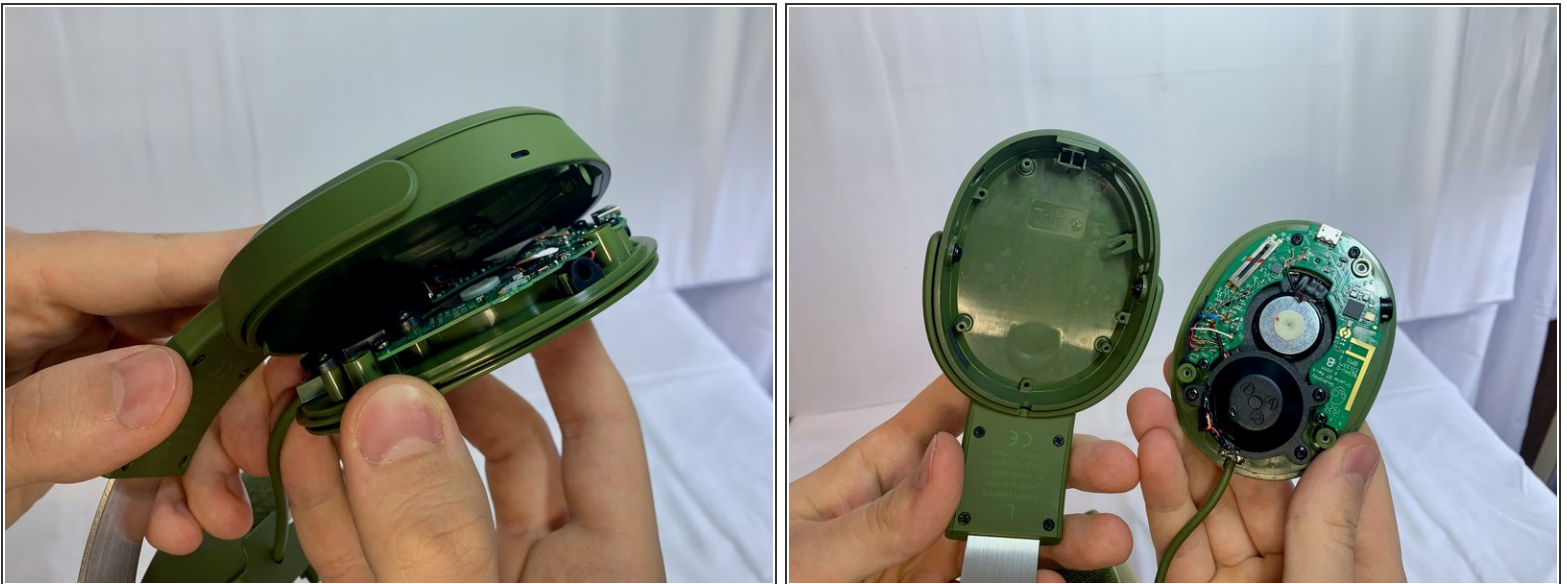
- Remove three 12 mm Phillips #1 screws located underneath the left ear cushion of the headphones.

## Step 5



- Slide a plastic opening tool between the plastic frame and speaker assembly of the headphones.
- Gently pry the speaker assembly away from the frame of the headphones.

## Step 6



- Separate headphone speaker assembly from headphone speaker frame.

## Step 7



- The Bluetooth antenna module chip is located on the right top corner of the motherboard.
  - If necessary, the chip module can be desoldered and replaced with a new one. Or, the motherboard can be replaced.
- ⓘ For more information on soldering, please, use this [Solder and Desolder Connections guide](#).

To reassemble your device, follow these instructions in reverse order.