



JBL Go Repair Motherboard Replacement

This guide will take you through the steps to remove and replace the motherboard inside your JBL Go.

Written By: Sydney Jason



INTRODUCTION

If your JBL Go will not charge, use this guide to replace the charging port, which will require replacing the motherboard that contains the charging port.

TOOLS:

- [iFixit Opening Tool](#) (1)
 - [T6 Torx Screwdriver](#) (1)
-

Step 1 — Front Cover



- Use an opening tool to scrape around the outside of the front cover to remove the glue attaching it to the surrounding rubber layer.

Step 2



- Once you have scraped off all of the glue, use the opening tool to pry up the front cover.

Step 3



- Carefully remove the loose plastic cover from the speaker.

Step 4 — Motherboard



- Once the front cover is removed, use a T6 screwdriver to remove the four 9 mm screws on the black cover.

Step 5



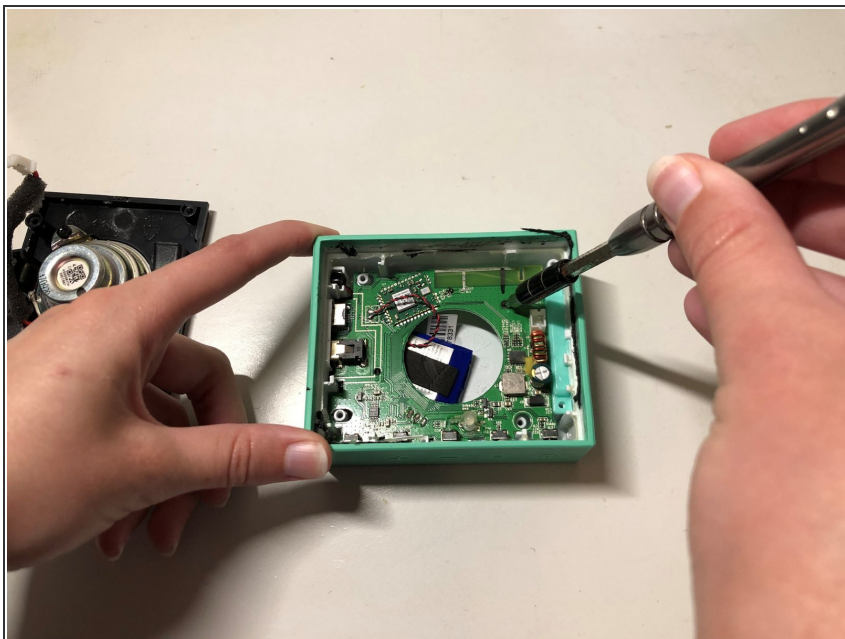
- After removing the screws, use the plastic opening tool to carefully pry around the edges of the black cover to loosen and lift the cover off of the device.

Step 6



- Carefully unplug the woofer wires from the motherboard.

Step 7



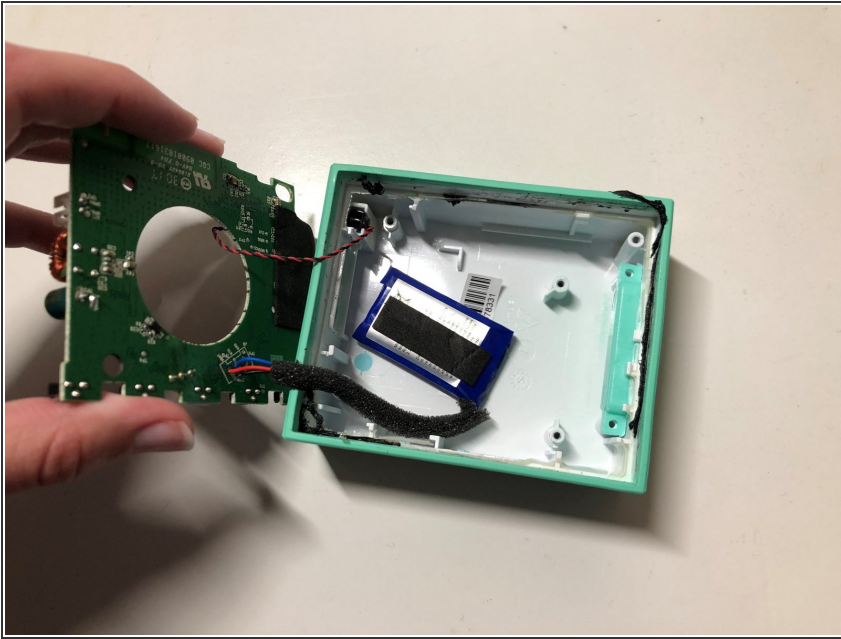
- Use the T6 screwdriver to remove the 9 mm screw that secures the motherboard in place.

Step 8



- Lift the motherboard using the plastic opening tool and stick it through the hole in the middle of the board.

Step 9



- Carefully lift the motherboard, sliding the charging port side out of the frame of the speaker as you go.

To reassemble your device, follow these instructions in reverse order.