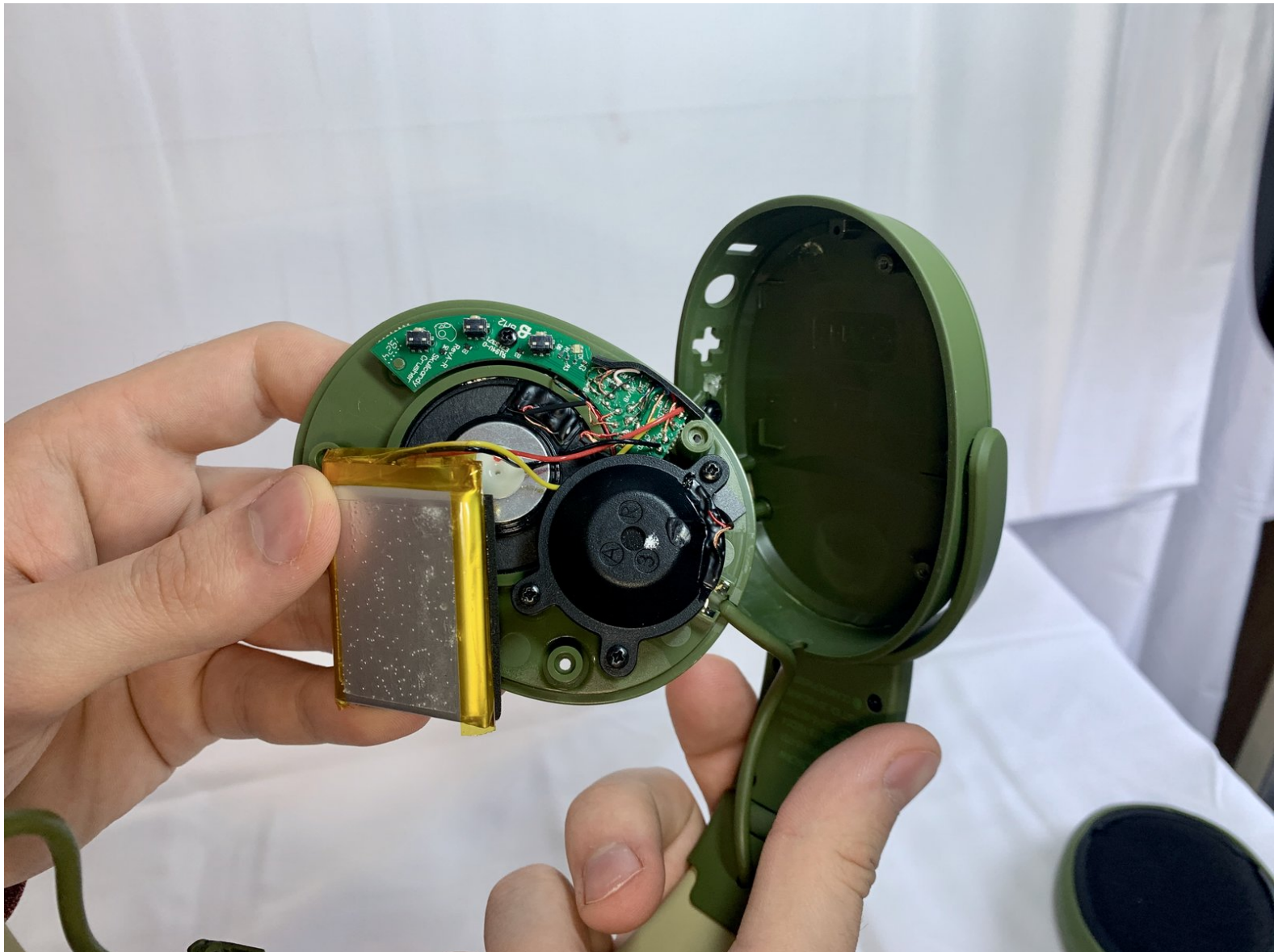




Skullcandy Crusher Wireless Battery Replacement

How to replace the battery in a Skullcandy Crusher Wireless headphones.

Written By: Valerii



INTRODUCTION

Use this guide to replace the battery in a Skullcandy Crusher Wireless headphones. A replacement battery can be bought online.

Follow this replacement guide if you've identified the battery as a source of the problem (or maybe you just want to see the internal components of your Skullcandy Crusher Wireless). To be sure, check out the [Troubleshooting page](#).

[Make sure you are not working with a swollen battery.](#)

Also, for more information about soldering and desoldering, please [use this guide](#).



TOOLS:

- [Phillips #1 Screwdriver](#) (1)
- [iFixit Opening Tool](#) (1)
- [Soldering Station Hakko FX-888D](#) (1)



PARTS:

- [Skullcandy Crusher Wireless Replacement Ear Cushion](#) (1)
<https://www.skullcandy.com/crusher-wireless-replacement-ear-cushion>

Step 1 — Ear Cushion



- Take your headphones and hold them upside down for better control with your hands.

Step 2



- Grab the ear cushion firmly between your thumb and forefinger with a tight grip.
- Pull the ear cushion away from the plastic, covering the speaker, by sliding the ear cushion down to release it.

Step 3




- Continue pulling it away from the edges of the plastic covering until the cushion is fully removed.

Step 4 — Battery



- Remove three 12 mm Phillips #1 screws located underneath the left ear cushion of the headphones.

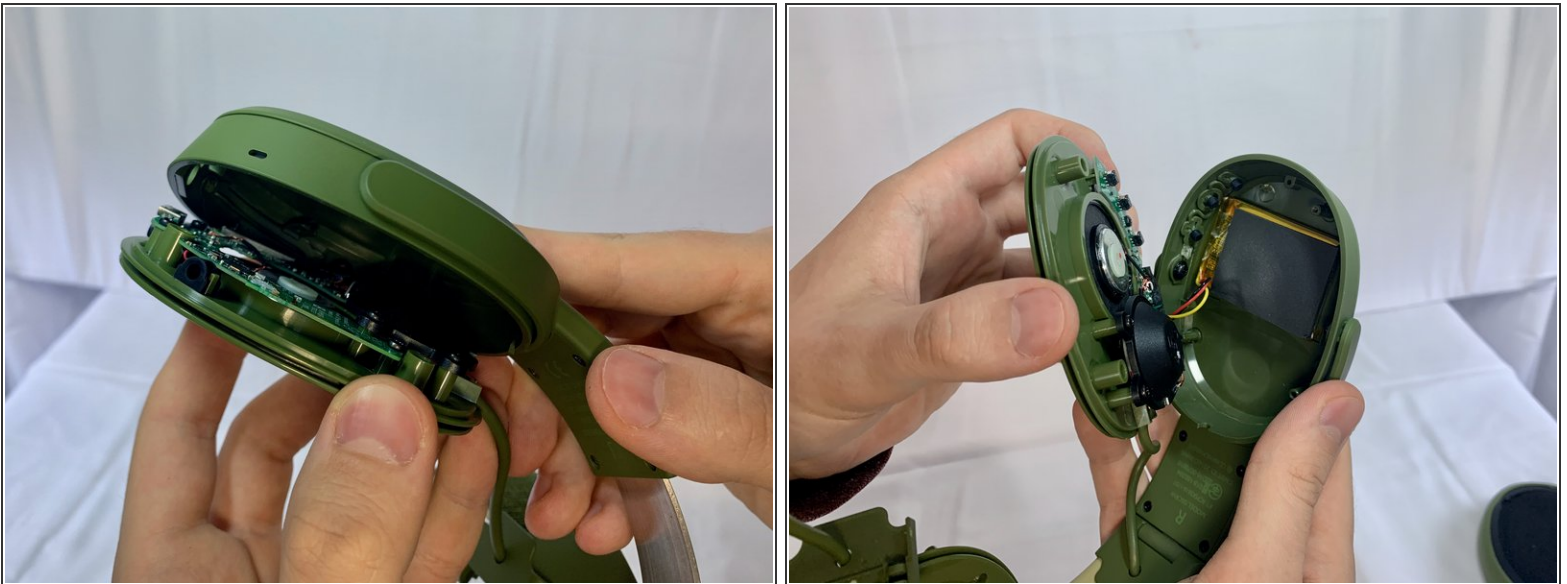
 You have to work on the right-side earphone.

Step 5



- Slide a plastic opening tool between the plastic frame and speaker assembly of the headphones.
- Gently pry the speaker part away from the frame of the headphones.


Step 6



- Separate the headphone speaker assembly from the headphone speaker frame.

Step 7



- Remove the battery from the headphone housing.
 - Use a soldering iron to desolder the black, red, and yellow cables from the board and disconnect the battery.
-  For more information on soldering, please, use this [Solder and Desolder Connections guide](#).

To reassemble your device, follow these instructions in reverse order.