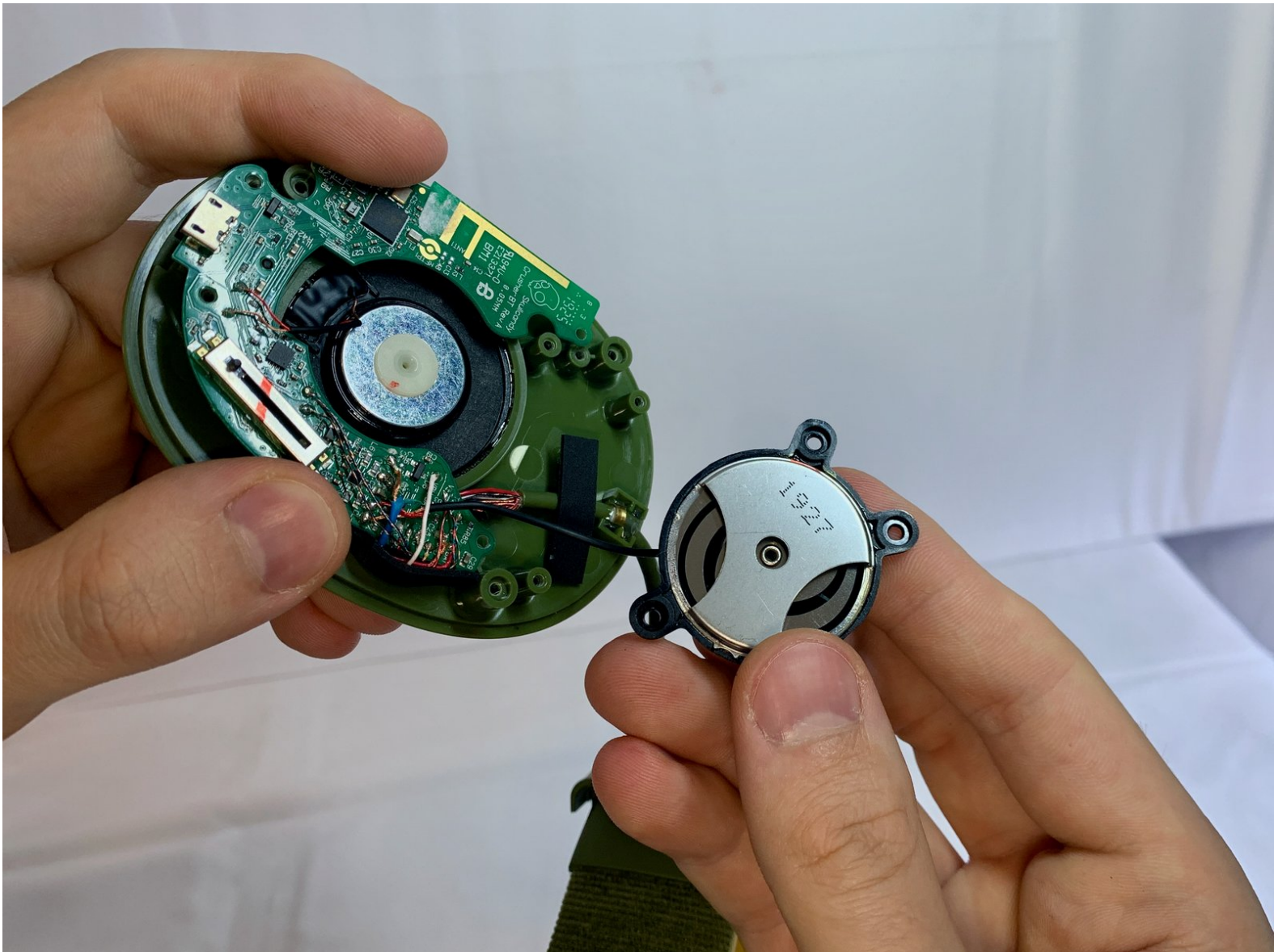




# Skullcandy Crusher Wireless Earpiece Speaker Replacement

How to replace the earpiece speaker in a Skullcandy Crusher Wireless.

Written By: Val



## INTRODUCTION

Use this guide to replace the earpiece speaker in a Skullcandy Crusher Wireless headphones. Replacement speakers can be bought online.

Follow this replacement guide if the earpiece speaker has stopped working and you've ruled out other sources of the problem (or maybe you just want to see the internal components of your Skullcandy Crusher Wireless). See our [Troubleshooting page](#) for more information on what could be causing the sound issues.

Also, for more information about soldering and desoldering, please [use this guide](#).



### TOOLS:

- [T6 Torx Screwdriver](#) (1)
- [iFixit Opening Tool](#) (1)
- [Phillips #1 Screwdriver](#) (1)
- [Soldering Station Hakko FX-888D](#) (1)



### PARTS:

- [Skullcandy Crusher Wireless Replacement Ear Cushion](#) (2)  
*<https://www.skullcandy.com/crusher-wireless-replacement-ear-cushion>*

## Step 1 — Ear Cushion



- Take your headphones and hold them upside down for better control with your hands.

## Step 2



- Grab the ear cushion firmly between your thumb and forefinger with a tight grip.
- Pull the ear cushion away from the plastic, covering the speaker, by sliding the ear cushion down to release it.



### Step 3



- Continue pulling it away from the edges of the plastic covering until the cushion is fully removed.

### Step 4 — USB Connector



- Remove three 12 mm Phillips #1 screws located underneath the left ear cushion.

## Step 5



- Slide a plastic opening tool between the plastic frame and speaker assembly of the headphones.
- Gently pry the speaker away from the frame of the headphones.

## Step 6



- Separate the headphone speaker assembly from headphone speaker frame.

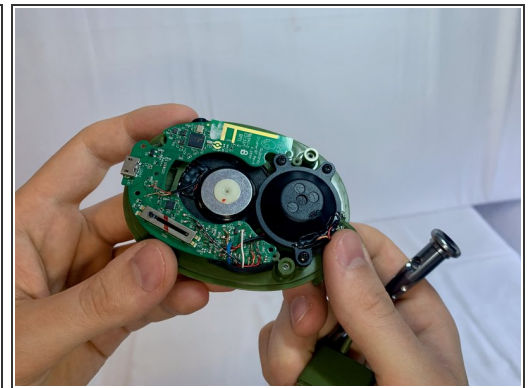
## Step 7



- Inspect the USB port and ensure that it is connected correctly. If necessary, desolder the USB port and replace it with the new port.

ⓘ For more information on soldering, please, use this [Solder and Desolder Connections guide](#).

## Step 8 — Earpiece Speaker



- Remove four 4 mm Phillips #1 screws that connect the motherboard with the plastic frame.



## Step 9



- Remove three 4 mm Phillips #1 screws that connect the bass speaker to the plastic frame.

## Step 10



- Move the motherboard away from the plastic frame.
- Desolder two cables to replace the speaker and bass component.
- ⓘ For more information on soldering, please, use this [Solder and Desolder Connections guide](#).

To reassemble your device, follow these instructions in reverse order.