



Skullcandy Crusher Wireless Folding Hinge Replacement

This guide will show you how to replace the folding hinge in a Skullcandy Crusher Wireless.

Written By: Valerii



INTRODUCTION

You will use this guide to replace the folding hinge in a Skullcandy Crusher Wireless headphones. Replacement folding hinges can be bought online or taken from another Skullcandy Crusher Wireless headphone.



TOOLS:

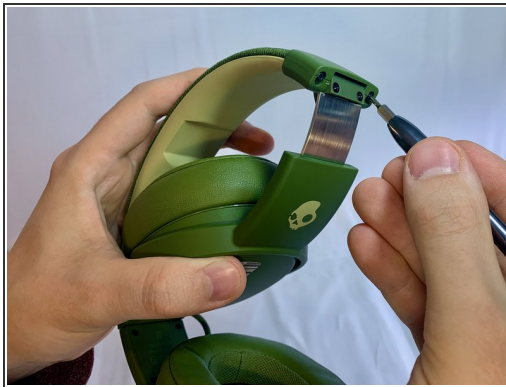
- [Phillips #1 Screwdriver](#) (1)
 - [T6 Torx Screwdriver](#) (1)
-

Step 1 — Folding Hinge



- Extend and fold the hinge of the headphones you are trying to replace.

Step 2



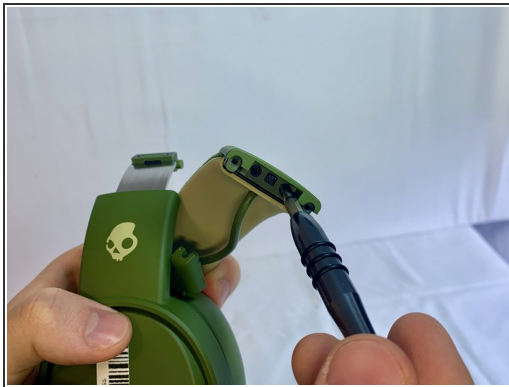
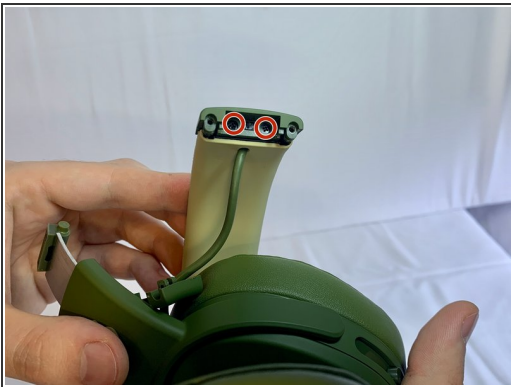
- Remove two 14 mm Torx T6 screws on the underside of the headband.

Step 3



- Pry the speaker away from the headband with a slight force.

Step 4



- Remove two 5 mm Phillips #1 screws on the underside of the headband.

Step 5



- Remove the top plastic part of the hinge.

To reassemble your device, follow these instructions in reverse order.