



# Delta Shower Handle Cartridge Replacement

This guide will provide the necessary steps to replace a Delta shower handle cartridge. This could be a potential fix for a leaky shower head.

Written By: Jared Singleton



## INTRODUCTION

If you have a leaking shower head, one cause could be from the shower handle cartridge letting water through when the handle is fully closed.

This cartridge is designed to mix hot and cold water from two separate pipes and exit out of your shower head. Just like other mechanical parts, the cartridge can wear out over time and not fully close when the shower handle is in the closed/off position.

Before using this guide, figure out what make and model cartridge your shower has. Some make and models may look different on the front but are similar on the back and are installed the same way as the Delta model #RP19804 shown in the guide.



### TOOLS:

- [Flathead 3/32" or 2.5 mm Screwdriver](#) (1)
  - [2" Hex Head Set](#) (1)
  - [Channellock Groove Joint Pliers](#) (1)
  - [Water shutoff key \(Optional\)](#) (1)
-

## Step 1 — Shower Handle Cartridge



- Turn off the water supply to the house by turning the knob seen here to the off position.
- ⓘ This can be done with a water shut off key or a pair of pliers.
- ⓘ This style of knob has 2 holes that line up when it is in the off position.

## Step 2



- Loosen the small bolt seen here in order to remove the shower handle.
- ⓘ A hex key will likely be needed, sizes may vary.



### Step 3



- Remove the metal sleeve by grasping with one hand and pulling towards your body.

### Step 4



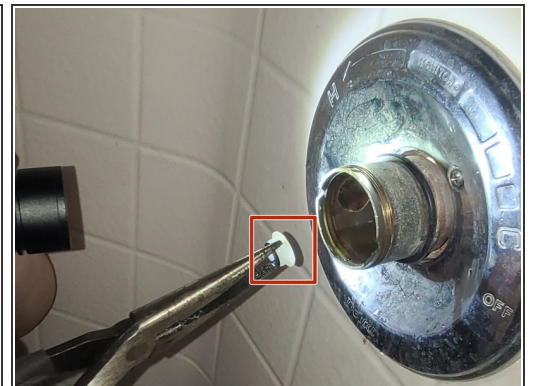
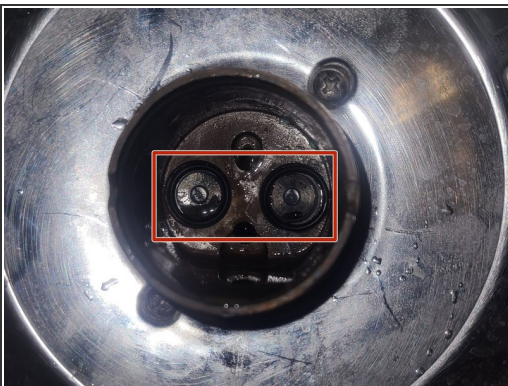
- Remove the metal ring using a pair of channel lock pliers and twisting counter clockwise.

## Step 5



- Insert your flathead screwdriver into a slot on either the top or bottom of the cartridge, this will give you something to help wedge the cartridge out.
- While using the screwdriver, use your hand to wiggle the cartridge up and down to help in the removal process.

## Step 6



- Check the inside of the pipe to ensure the old cartridge did not break or leave any small pieces behind.
- ⓘ Remove any pieces left behind with a pair of needle nose pliers.



## Step 7



- Do one last double check for any objects that will interfere with the installation of the new cartridge.

## Step 8



- Use plumbers silicone grease to add a lubricant to the O-rings of the new cartridge.
- Use your finger to evenly distribute the grease over the entire O-ring.

## Step 9



- There will be an identifier to show which side of the cartridge is the "hot side". This side should be installed facing the pipe that your hot water comes from.

## Step 10



- Line up the notches on the cartridge and the pipe when inserting the new cartridge.
  - Firmly press the cartridge into the pipe until the notches have fully met.
  - Thread the metal ring over the cartridge and onto the pipe.
- ⓘ This can be done by rotating the metal ring clockwise once it has been met with the threads of the pipe.
- ⓘ You may not be able to push the cartridge all the way so the notches touch. If this happens then use the metal ring to push the cartridge the rest of the way.

To reassemble your device, follow steps 1 - 4 in reverse order.